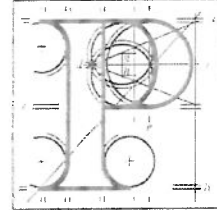


**Our Case Number:** ABP-320164-24

**Planning Authority Reference Number:**



An  
Bord  
Pleanála

Howth Sutton Autism Friendly Community  
c/o David Crofts  
Daheim  
St Fintan's Road  
Sutton South

D13 W6W4

**Date:** 06 November 2024

**Re:** DART + Coastal North Railway Order 2024 - Northern Line between Dublin City Centre and Drogheda including the Howth Branch  
Dublin City Centre and Drogheda, located in counties Dublin, Meath and Louth

Dear Sir / Madam,

An Bord Pleanála has received your recent letter in relation to the above mentioned case. The contents of your letter have been noted. Please accept this letter as a receipt for the fee of €50 that you have paid.

More detailed information in relation to strategic infrastructure development can be viewed on the Board's website: [www.pleanala.ie](http://www.pleanala.ie).

If you have any queries in relation to the matter please contact the undersigned officer of the Board at [laps@pleanala.ie](mailto:laps@pleanala.ie)

Please quote the above mentioned An Bord Pleanála reference number in any correspondence or telephone contact with the Board.

Yours faithfully,

Aisling Reilly  
Executive Officer  
Direct Line: 01-8737131

RA03

Teil	Tel	(01) 858 8100
Glaó Áitiúil	LoCall	1890 275 175
Facs	Fax	(01) 872 2684
Láithreán Gréasáin	Website	<a href="http://www.pleanala.ie">www.pleanala.ie</a>
Ríomhphost	Email	<a href="mailto:bord@pleanala.ie">bord@pleanala.ie</a>

64 Sráid Maoilbhríde	64 Marlborough Street
Baile Átha Cliath 1	Dublin 1
D01 V902	D01 V902

## Dart + submission

*on behalf of*

### Howth Sutton Autism Friendly Community

This submission is made on behalf of the Howth Sutton Autism Friendly Community in relation to the proposal to discontinue the direct train service serving Bayside, Sutton and Howth as part of the wider Dart+ programme.

We are a group of Autistic individuals and the parents of Autistic children and adults who have come together over the past year with the goal of making Howth and Sutton a community which is more friendly to the needs of Autistic people under the aegis of the Autism Friendly Towns initiative promoted by AsIAM, Ireland's leading charity for Autistic people.

The main substance of our objection to the proposed withdrawal of direct services from Bayside, Sutton and Howth to Dublin is based upon the fact that the current service has given many Autistic adults and children a significant amount of freedom and independence which will be jeopardised should the proposed changes occur.

Autistic people usually require a significant amount of structure and predictability in their lives and it has taken considerable time and effort for many Autistic people within our community to learn to use the Dart to travel to school, to work and to enjoy overall the access and flexibility which the current Dart service offers in allowing all to live fulfilling lives. The idea of discontinuing direct services and replacing these with the requirement to change trains at Howth Junction with the platform changes and disruption involved - with multiple people endeavouring to do the same thing at the same time - is one which will cause extreme anxiety to many within our community and, we fear, will alienate and isolate Autistic adults and children as a result. When challenges become overwhelming for many Autistic people the natural response is either to meltdown or withdraw.

At a time when barriers to inclusion are being removed across most other areas of society and the government has sought to demonstrate Ireland's commitment to meeting its obligations under the United Nations Convention on the Rights of Persons with Disabilities, the idea of introducing measures which discriminate against people with disabilities is both retrograde and damaging.

We ask you therefore to take these concerns seriously and to ensure that a direct service to Bayside, Sutton and Howth is maintained going forward.

This submission also has the support of the national autism charity, AsIAm, and is endorsed by its CEO, Adam Harris.

Submitted by:

Dave Crofts,  
Daheim,  
St Fintan's Road,  
Sutton South,  
Co. Dublin  
D13 W6W4

On behalf of the Howth Sutton Autism Friendly Community