

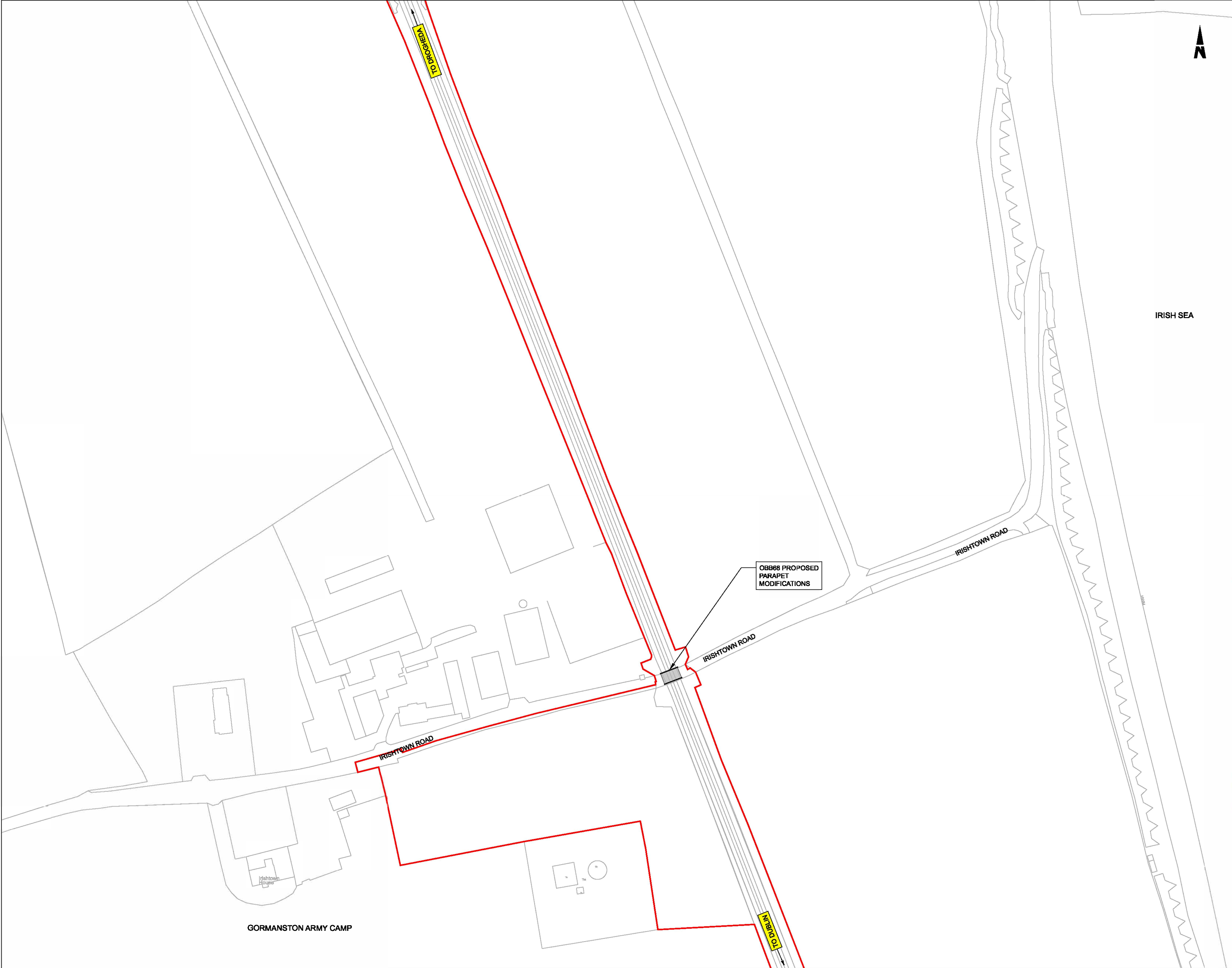
.....

SPECIFIC LOCATIONS

10 Gormanston

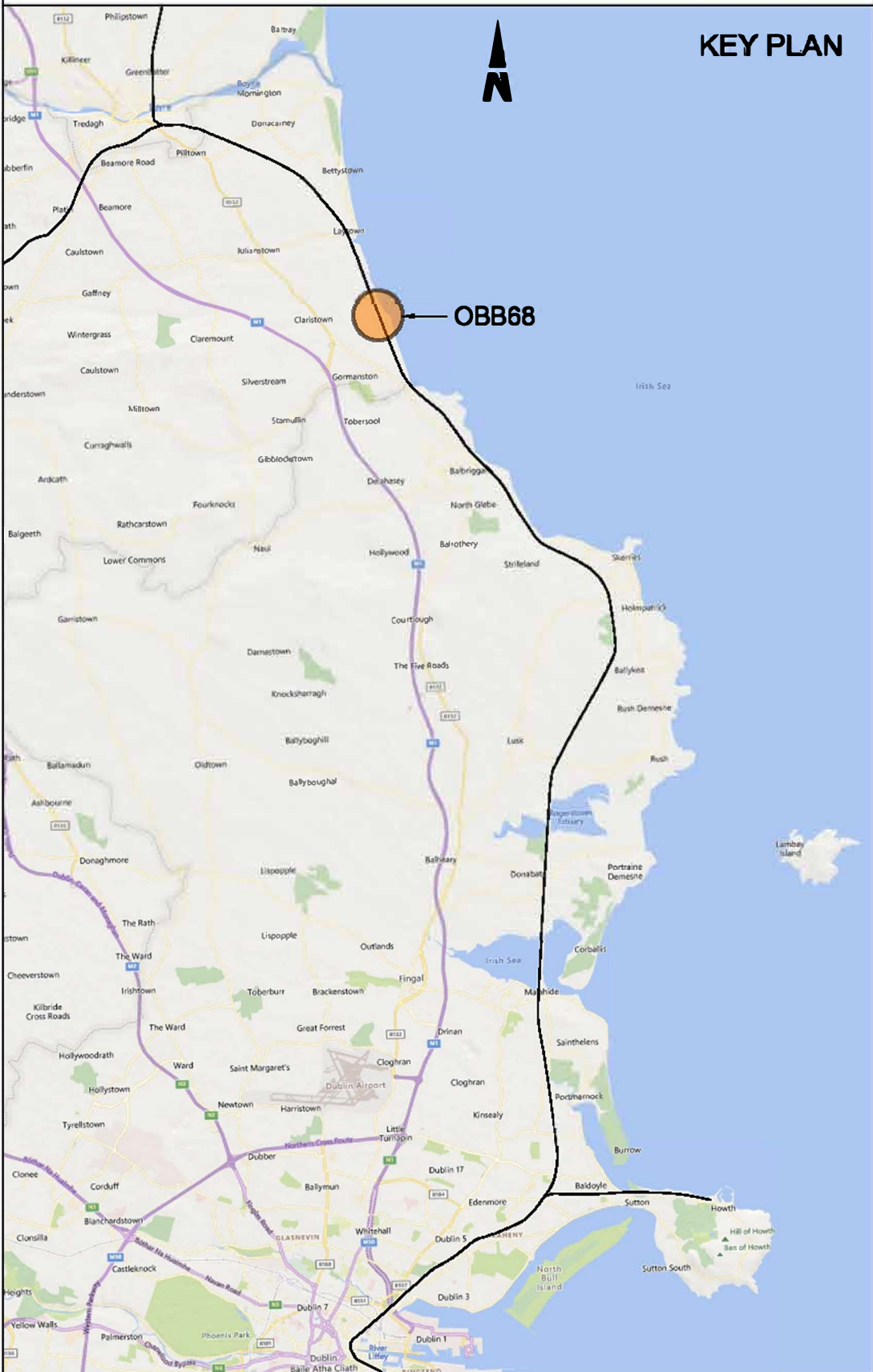
.....

**BRIDGE PARAPET
MODIFICATIONS**



- NOTES:
1. ALL DIMENSIONS ARE SHOWN IN MILLIMETERS UNLESS NOTED OTHERWISE.
 2. ALL LEVELS ARE SHOWN IN METERS ABOVE ORDNANCE DATUM.
 3. DO NOT SCALE FROM THIS DRAWING.
 4. PROPOSED AND EXISTING OVERHEAD LINE EQUIPMENT (OHLE) IS NOT SHOWN IN PLAN OR ELEVATION.

- LEGEND:
- | | |
|--|----------------------|
| | EXISTING ELEMENTS |
| | PROPOSED ELEMENTS |
| | DEVELOPMENT BOUNDARY |
| | EXISTING BRIDGE |



Disclaimer:

© Irish Rail (2023). This drawing is confidential and the copyright in it is owned by Irish Rail. This drawing must not be either loaned, copied or otherwise reproduced in whole or in part or used for any purpose without the prior permission of Irish Rail.

© OpenStreetMap contributors

© Ordnance Survey Ireland and Government of Ireland. All O.S. data used for plans are printed under Copyright Ordnance Survey Ireland 0039723 (OSI Aerial Data or OSI Lidar Data) & 2023/OSI_NMA_180 (OSI Vector Data). All elevations are in metres and relate to OSI Geoid Model (OSGM02) Mean Head as defined by existing Project Control. All Co-ordinates are in Irish Transverse Mercator Grid (ITM) as defined by OSI active GPS station Tallaght College (TLLG).

DART+
Coastal North

NTA
Údair Náisiúnaíompar
National Transport Authority

Tionscadal Éireann
Project Ireland
2040

Rev	Date	Dm	Chk'd	App'd	Description
P01	13/10/2023	AC	CG	DB	PLANNING ISSUE

Client

Iarnród Éireann
Irish Rail

Engineering Designer

ARUP

Project Title

DART+ COASTAL NORTH

Drawing Title

**OBB68 GORMANSTON MILITARY
PARAPET MODIFICATIONS
SITE LOCATION PLAN**

Date
01/06/23

Scale
1:1000 @ A1
@ A3

Drawn
AC

Checked
CG

Approved
DB

Project Code
D+WP56

Originator Code
ARP

QMS Code

280275-00

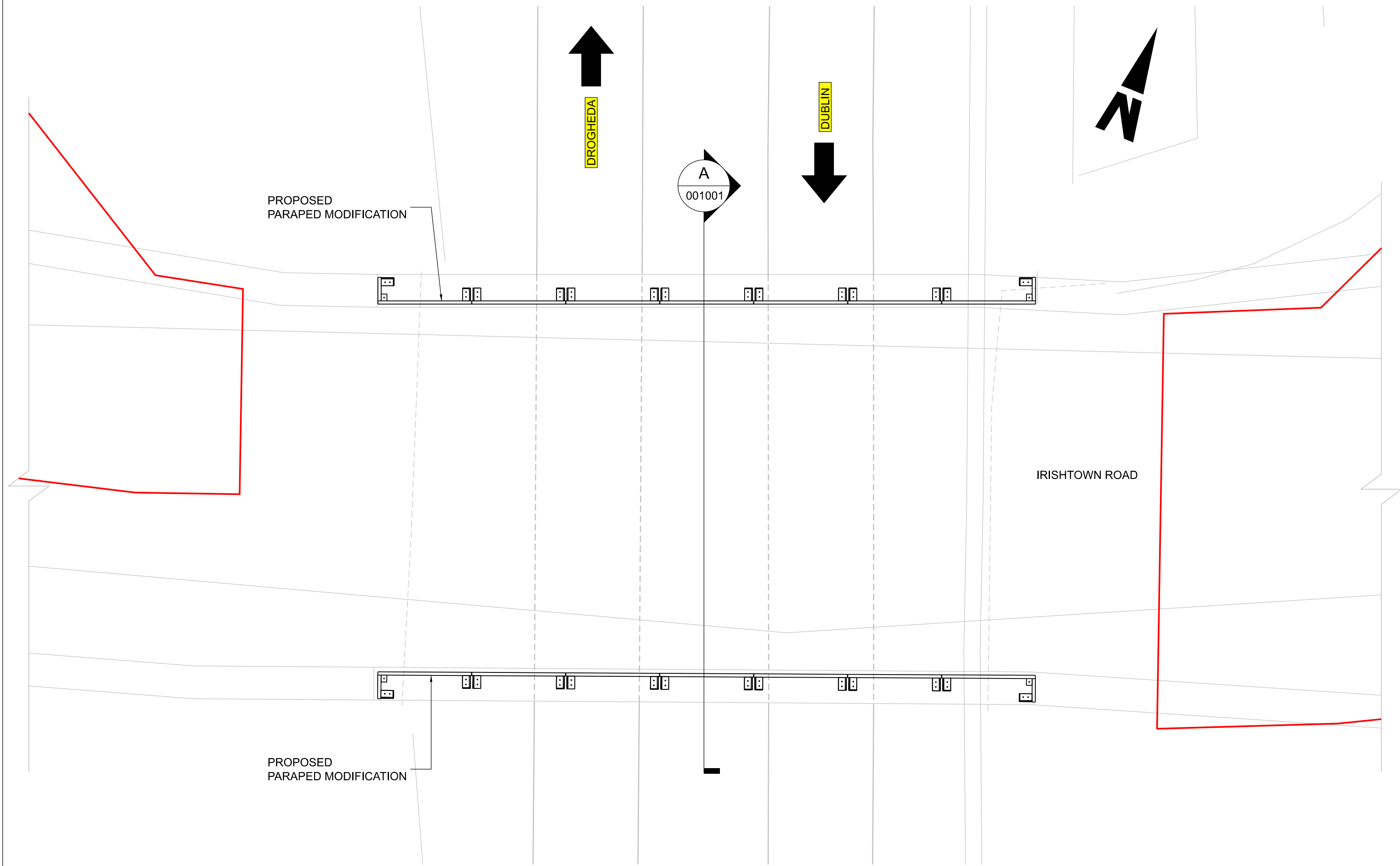
Drawing File Name
D+WP56-ARP-P4-NL-DR-RO-001000

Sheet Number
01 of 01

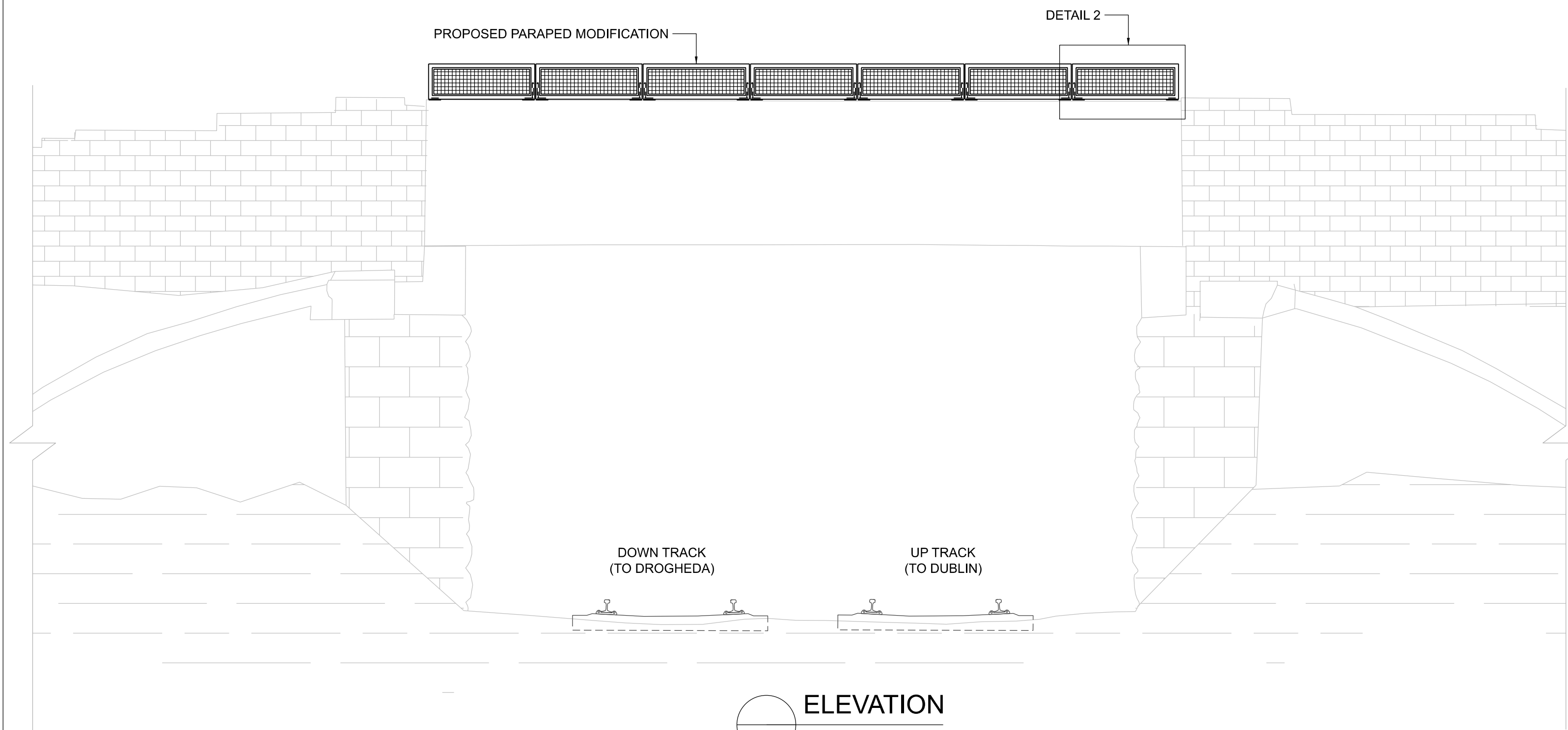
Status
S3

Rev
P01

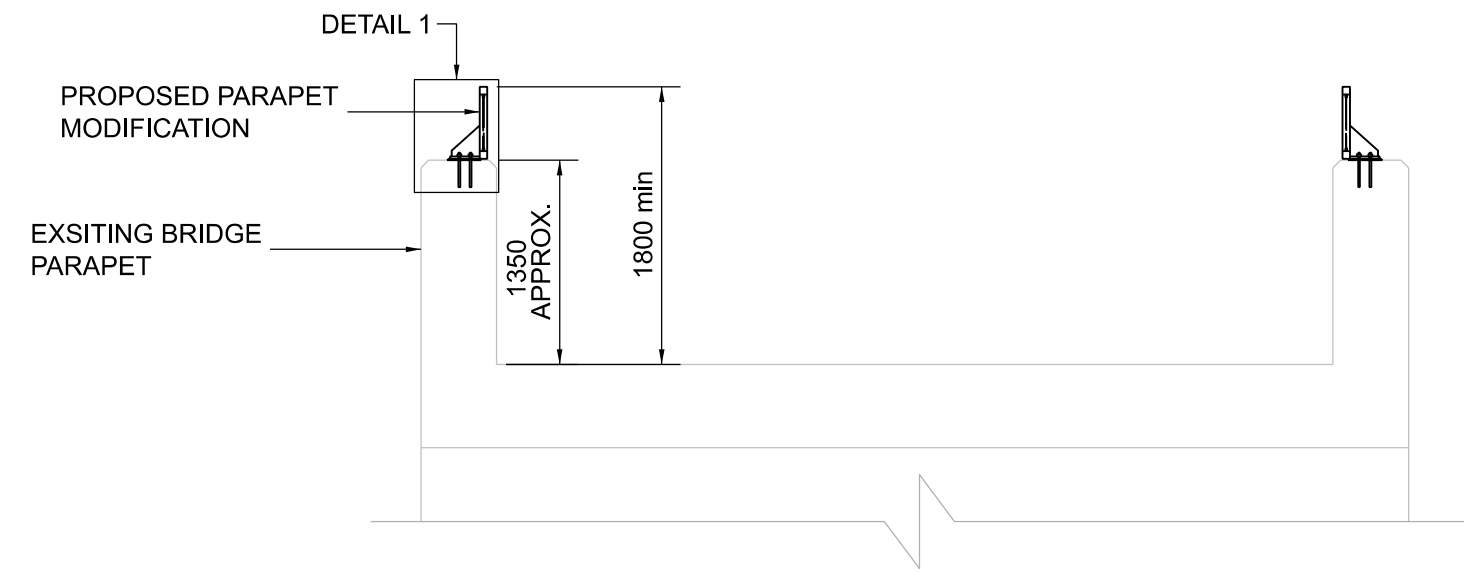
DO NOT SCALE USE FIGURED DIMENSIONS ONLY



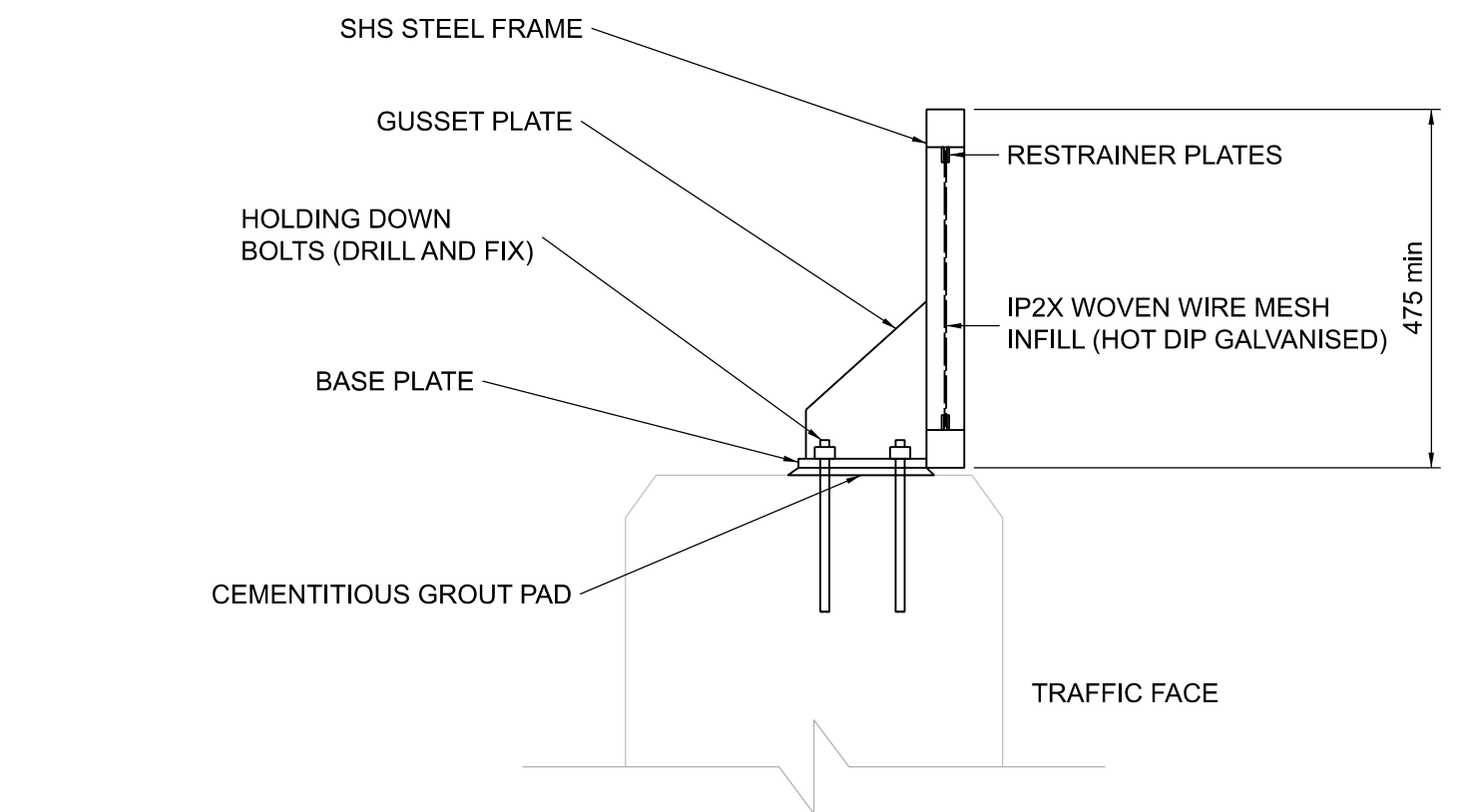
PLAN
001001 1:50



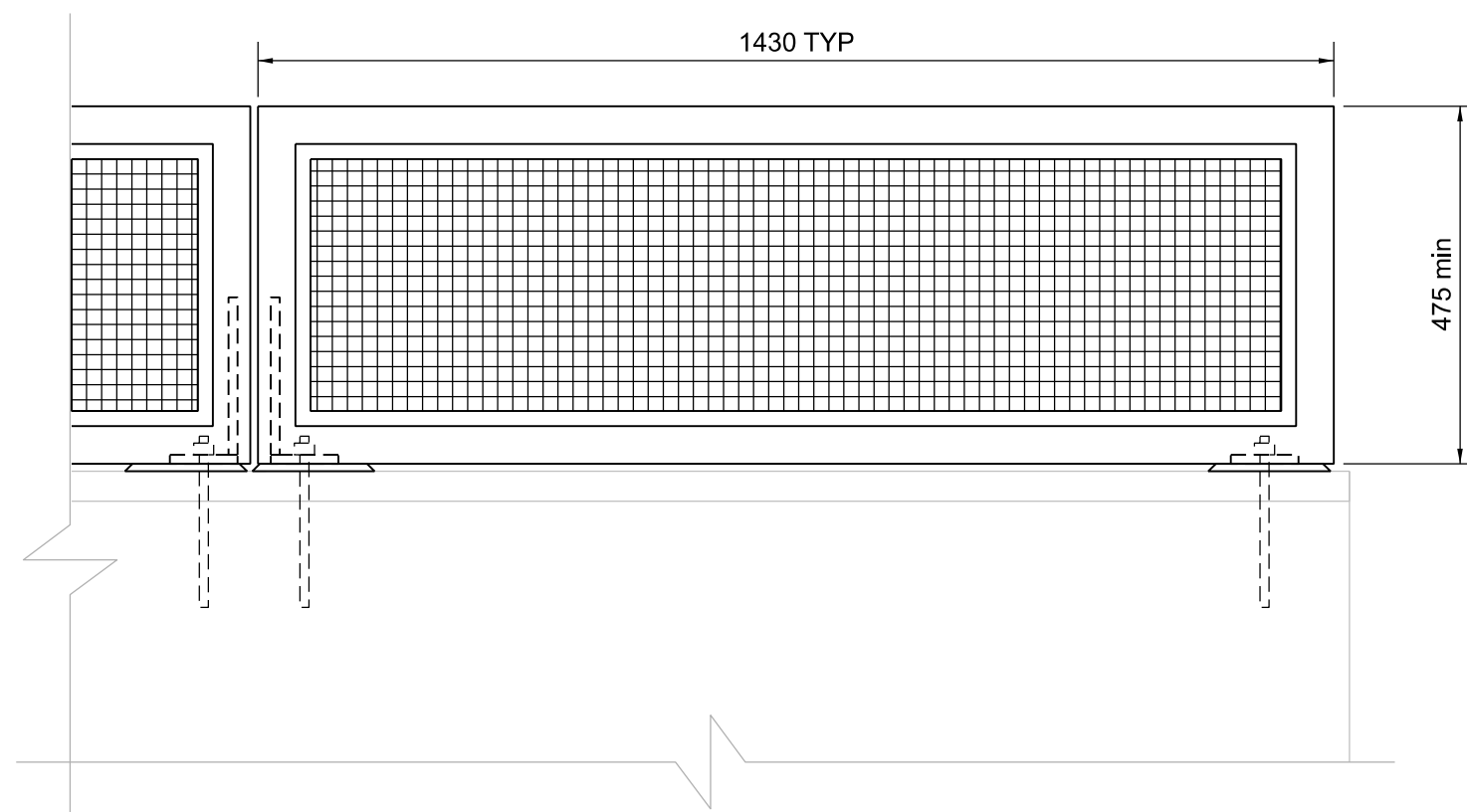
ELEVATION
001001 1:50



SECTION A
001001 1:50



DETAIL 1
001001 1:10



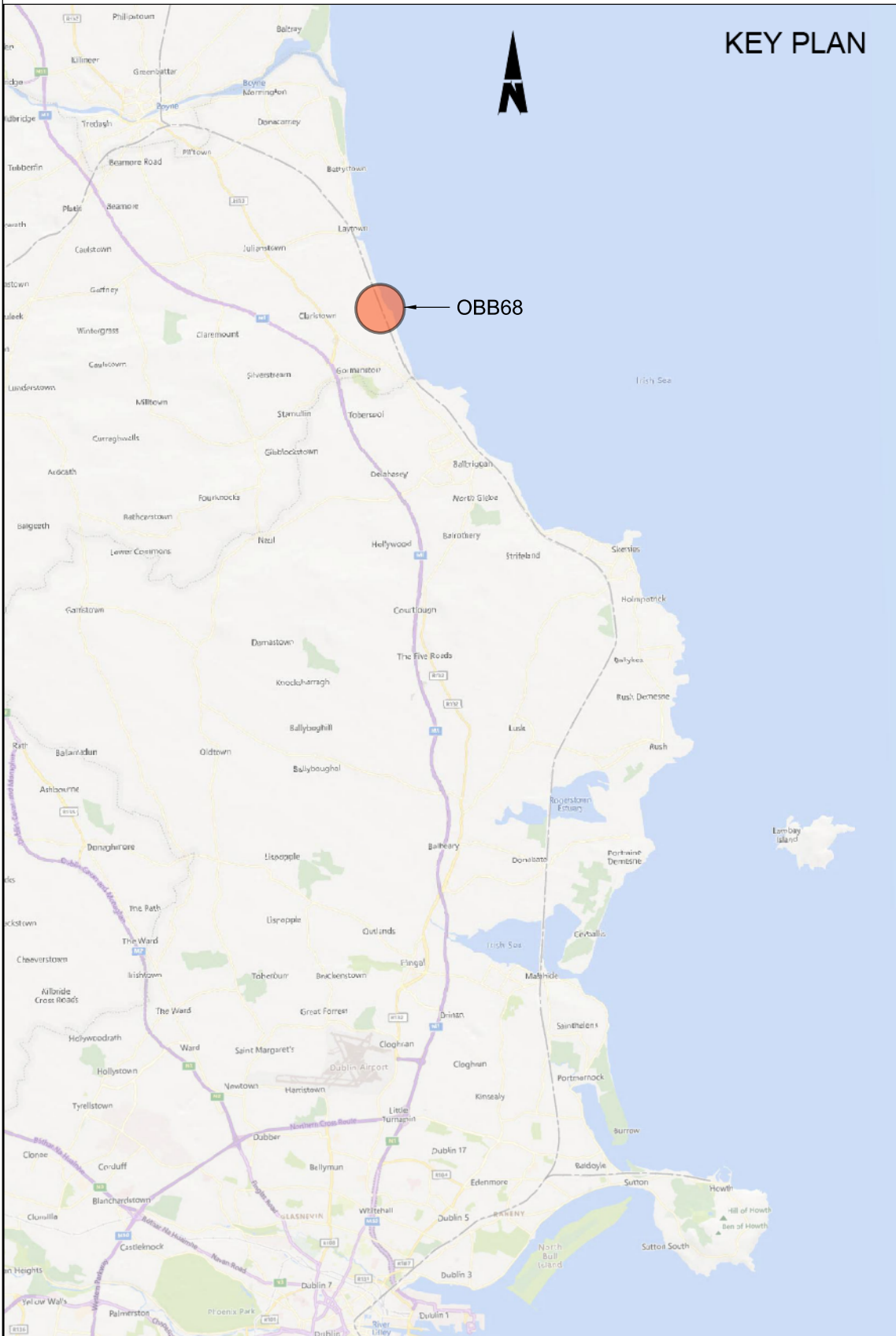
DETAIL 2
001001 1:10

NOTES:

1. ALL DIMENSIONS ARE SHOWN IN MILLIMETERS UNLESS NOTED OTHERWISE.
2. ALL LEVELS ARE SHOWN IN METERS ABOVE ORDINANCE DATUM.
3. DO NOT SCALE FROM THIS DRAWING.
4. ALL STEELWORK SHALL BE GRADE S355 UNLESS NOTED OTHERWISE. STEELWORK SHALL CONFORM TO THE FOLLOWING STANDARDS:
UB & UC SECTIONS - BS EN 10025
PFC & PLATES - BS EN 10025
RHS, SHS & CHS - BS EN 10210
EQUAL & UNEQUAL ANGLES - BS EN 10056
FLAT, SQUARE & ROUND BAR - BS EN 10025
5. ALL WELDED CONNECTIONS SHALL BE GRADE S355 UNLESS NOTED OTHERWISE.
6. ALL BOLT ASSEMBLIES SHALL BE OF PROPERTY CLASS 8.8 UNLESS NOTED OTHERWISE, WITH HEXAGONAL HEADED BOLTS CONFORMING TO BS EN 4014, NUTS TO BS EN 4032 AND HIGH STRENGTH STEEL WASHERS TO BS EN 7091.
7. ALL STEELWORK SHALL BE HOT DIP GALVANISED IN ACCORDANCE WITH IS EN ISO 1461.
8. ANCHOR BOLTS ARE TO BE INSTALLED IN EXISTING PARAPETS. PULL-OUT TESTS ON ANCHOR BOLTS SHALL BE UNDERTAKEN TO CONFIRM SUITABILITY OF BASE MATERIAL.

LEGEND:

- DEVELOPMENT BOUNDARY
- PROPOSED ELEMENTS
- EXISTING ELEMENTS



Disclaimer
© Irish Rail (2023). This drawing is confidential and the copyright in it is owned by Irish Rail. This drawing must not be either loaned, copied or otherwise reproduced in whole or in part or used for any purpose without the prior permission of Irish Rail.
© OpenStreetMap contributors
© Ordnance Survey Ireland and Government of Ireland. All O.S. data used for plans are printed under Copyright Ordnance Survey Ireland 0039723 (OSI Aerial Data or OSI Lidar Data) & 2023/OSI_NMA_190 (OSI Vector Data). All elevations are in metres and relate to OSI Grid Model (OSGM02) Mean Head as defined by existing Project Control. All Co-ordinates are in Irish Transverse Mercator Grid (ITM) as defined by OSI active GPS station Tallaght College (TLLG).



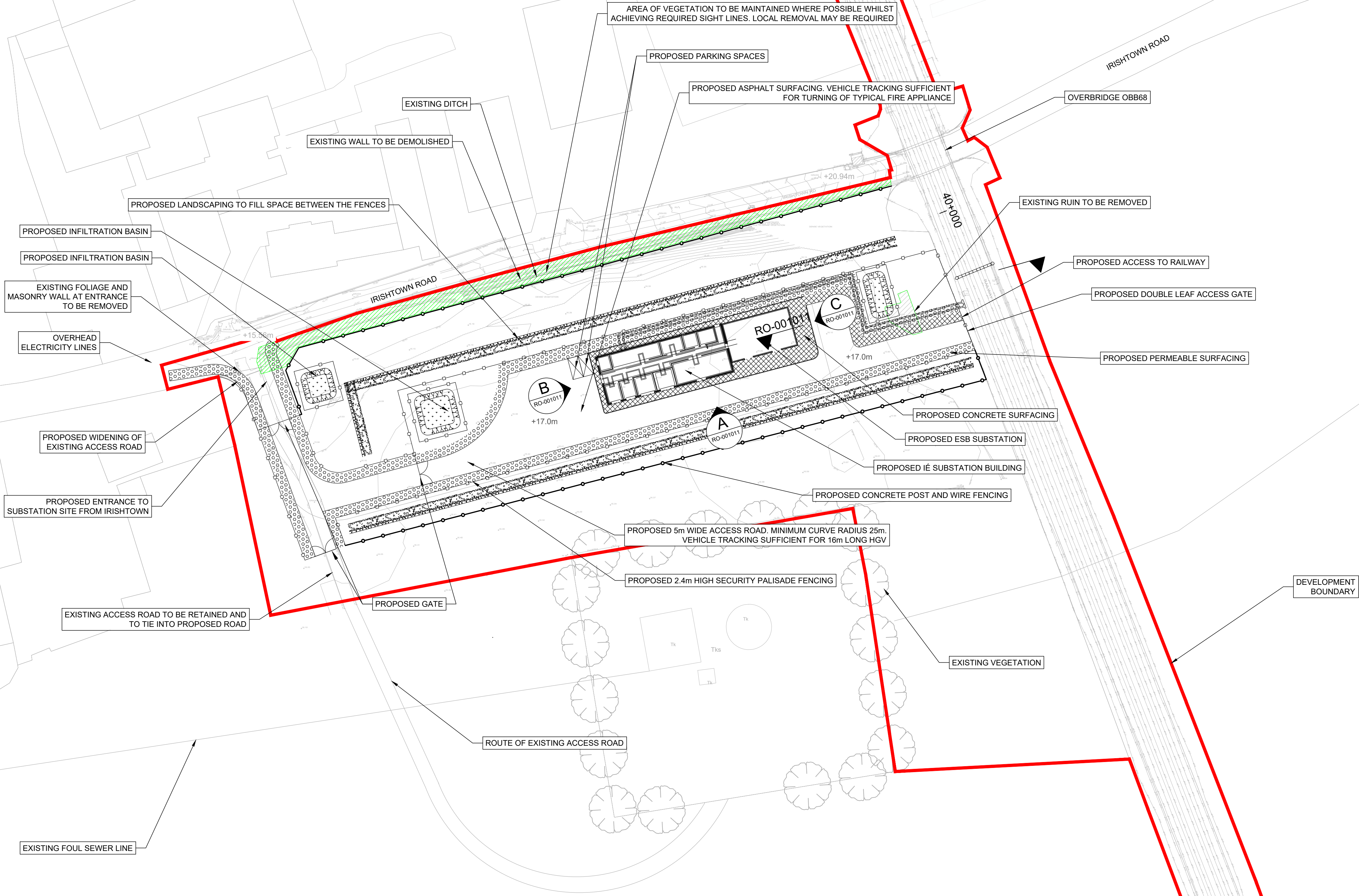
Rev	Date	Dm	Chk'd	App'd	Description
P01	13/10/2023	AA	CG	DB	PLANNING ISSUE

Client Iarnród Éireann Irish Rail		Engineering Designer ARUP		
Date 01/06/2023	Scale As Shown @ A1 @ A3	Drawn AA	Checked CG	Approved DB
Project Code D+WP56	Originator Code ARP	QMS Code 280275-00		

Project Title DART+ COASTAL NORTH				
Drawing Title OBB68 - GORMANSTON MILITARY PARAPET MODIFICATIONS GENERAL ARRANGEMENT				
Drawing File Name D+WP56-ARP-P4-NL-DR-RO-001001	Sheet Number 01 of 01	Status S3	Rev P01	

DO NOT SCALE USE FIGURED DIMENSIONS ONLY

C:\bms\arup-eur-pw-01\dms2949\ID+WP56-ARP-P4-NL-SR-RO-001010.dwg



SUBSTATION SITE LAYOUT PLAN

1:500 @ A1

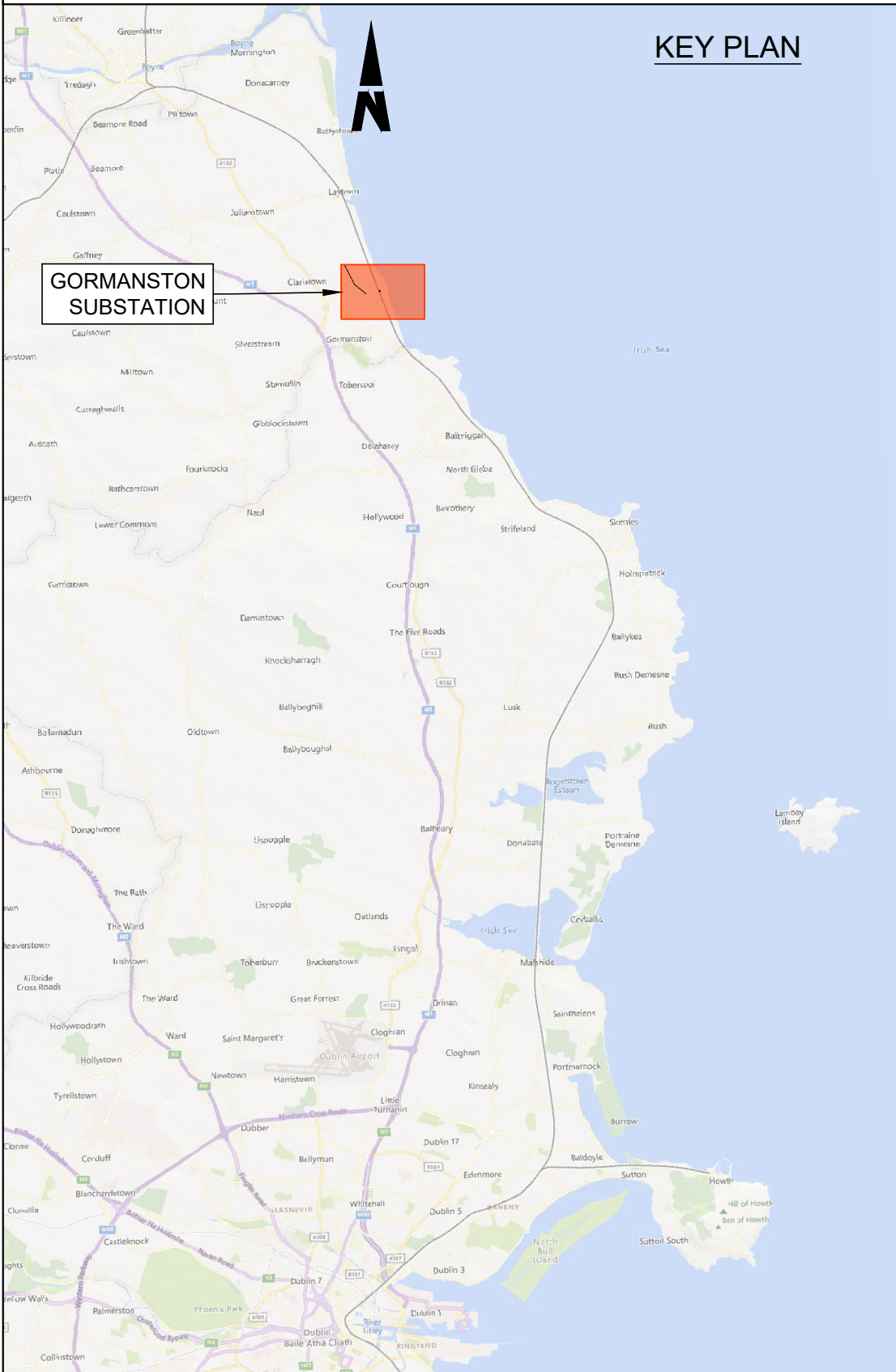
NOTES

- DO NOT SCALE FROM THIS DRAWING.
- LOCATION OF PROPOSED INCOMING ESB CABLE TO BE CONFIRMED.
- LOCATION OF ALL BURIED SERVICES TO BE CONFIRMED PRIOR TO CONSTRUCTION.
- ALL DIMENSIONS ARE IN METERS, UNLESS NOTED OTHERWISE.
- ALL CHAINAGES ARE IN KILOMETERS. (36+250 = 36.25km)
- DRAWING TO BE PRINTED IN COLOUR.
- ALL LEVELS ARE IN METERS ABOVE ORDNANCE DATUM (mOD) UNLESS NOTED OTHERWISE.
- THE DART+ COASTAL NORTH PROJECT IS POSITIONED ACCORDING TO THE IRISH TRANSVERSE MERCATOR (ITM) COORDINATE SYSTEM.

LEGEND

- EXISTING FENCING
- PROPOSED CONCRETE POST AND WIRE FENCING
- PROPOSED SECURITY PALISADE FENCING
- PROPOSED ASPHALT SURFACING
- PROPOSED CONCRETE SURFACING
- PROPOSED GRAVEL / OTHER POROUS SURFACING
- PROPOSED WILDFLOWER PLANTING
- PROPOSED LANDSCAPING
- AREA OF VEGETATION TO BE REMOVED
- DEVELOPMENT BOUNDARY
- PROPOSED ELEMENTS
- EXISTING ELEMENTS
- ELEMENTS TO BE REMOVED
- PROPOSED LEVELS
- EXISTING LEVELS

KEY PLAN



Disclaimer
© Irish Rail (2023). This drawing is confidential and the copyright in it is owned by Irish Rail. This drawing must not be either loaned, copied or otherwise reproduced in whole or in part or used for any purpose without the prior permission of Irish Rail.
© OpenStreetMap contributors
© Ordnance Survey Ireland and Government of Ireland. All O.S. data used for plans are printed under Copyright Ordnance Survey Ireland 0039723 (OSI Aerial Data or OSI Lidar Data) & 2023/OSI_NMA_180 (OSI Vector Data). All elevations are in metres and relate to OSI Goid Model (OSGM02) Mean Head as defined by existing Project Control. All Co-ordinates are in Irish Transverse Mercator Grid (ITM) as defined by OSI active GPS station Tallaght College (TLLG).

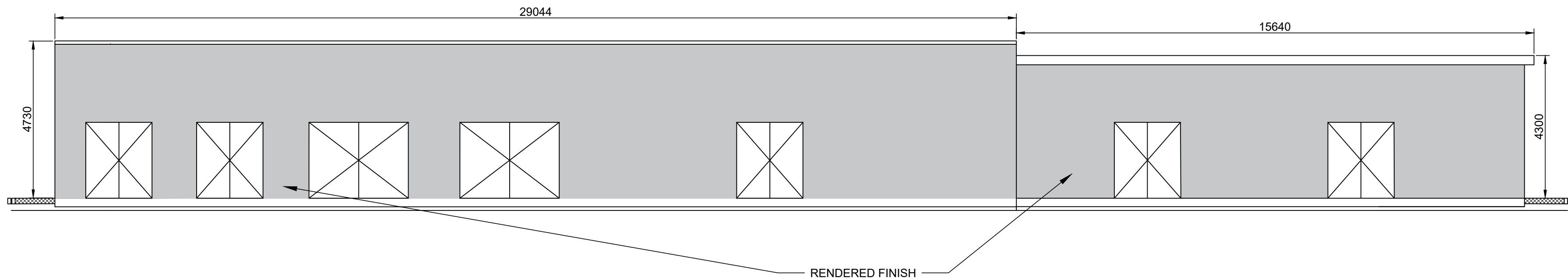


Rev	Date	Dm	Chk'd	App'd	Description
P01	17/11/2023	SF	EJ	DB	PLANNING ISSUE

Client Iarnród Éireann Irish Rail		Engineering Designer ARUP		
Date 01/06/2023	Scale 1:500 @ A1 1:1000 @ A3	Drawn SF	Checked EJ	Approved DB
Project Code D+WP56	Originator Code ARP	QMS Code 280275-00		

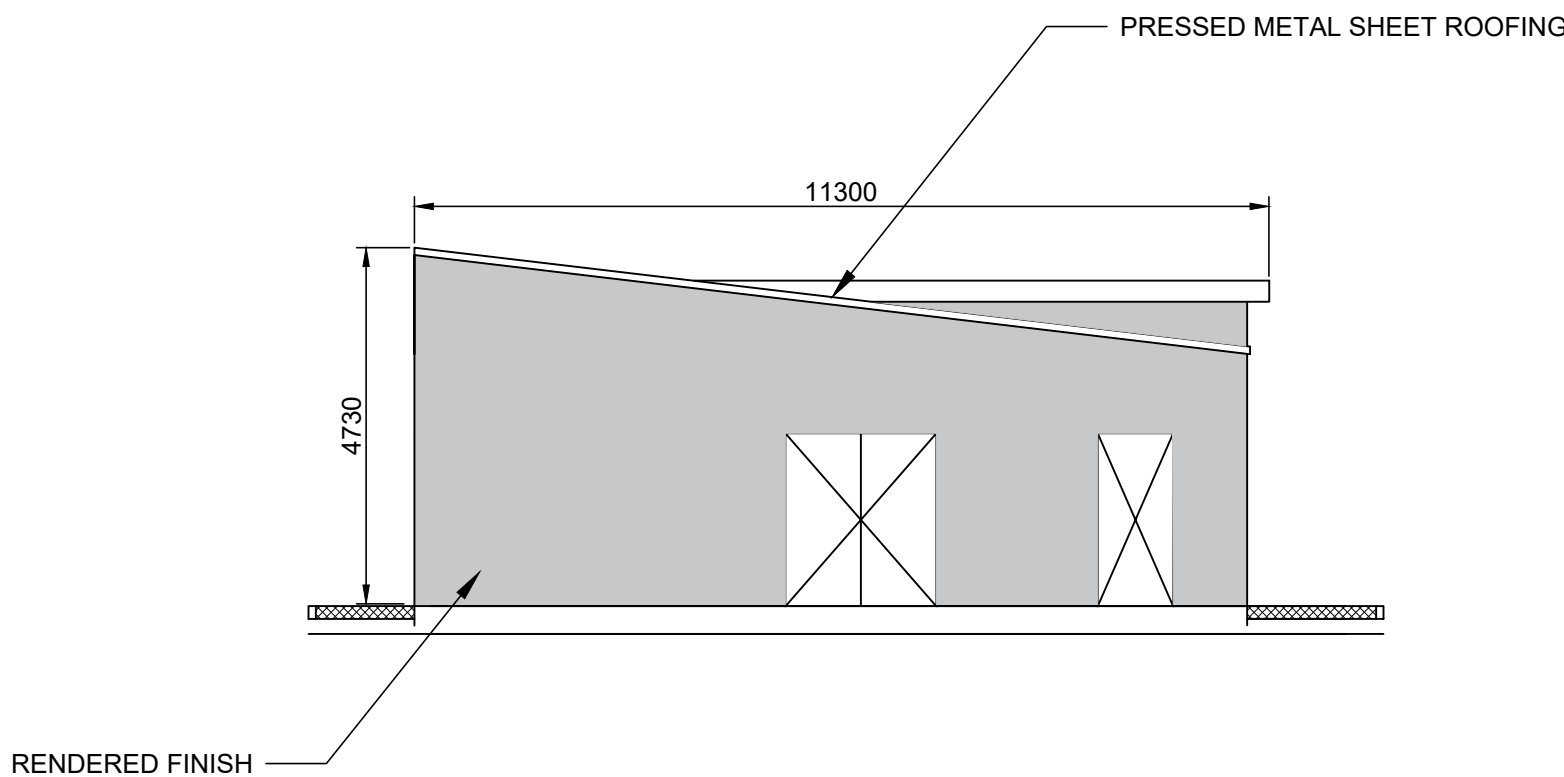
Project Title DART+ COASTAL NORTH				
Drawing Title GORMANSTON SUBSTATION SITE PLAN				
Drawing File Name D+WP56-ARP-P4-NL-RO-001010	Sheet Number 01 of 01	Status S3	Rev P01	

DO NOT SCALE USE FIGURED DIMENSIONS ONLY



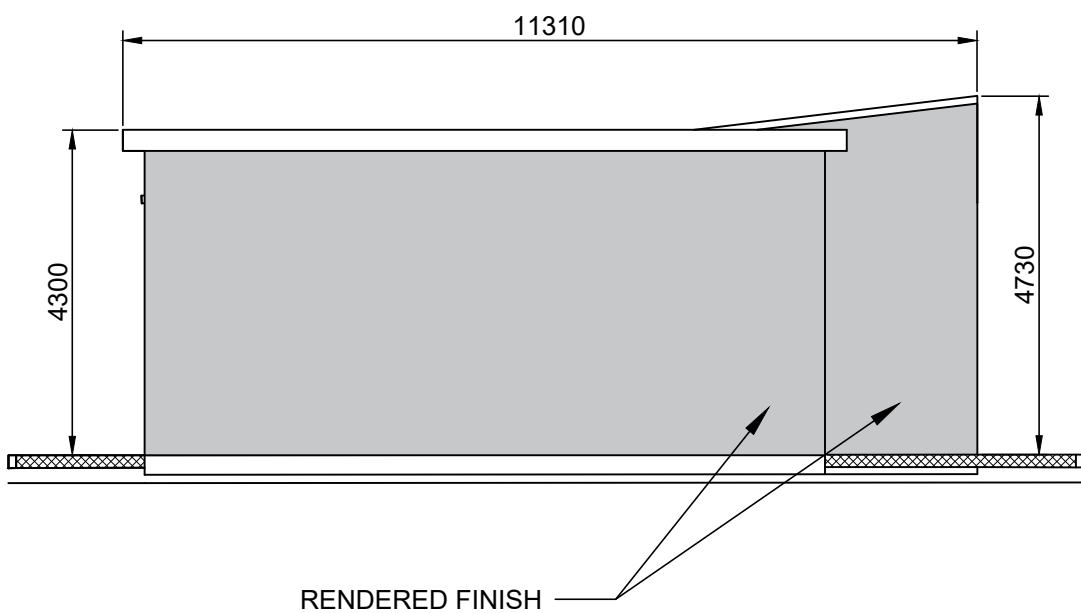
ELEVATION A

1:100 @ A1
1:200 @ A3



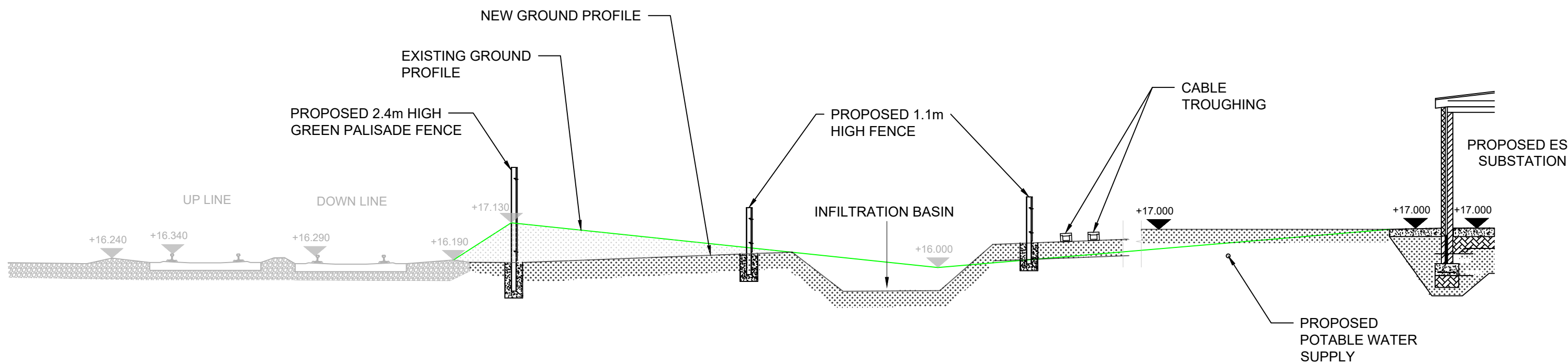
ELEVATION B

1:100 @ A1
1:200 @ A3



ELEVATION C

1:100 @ A1
1:200 @ A3



CROSS-SECTION

1:100 @ A1
1:200 @ A3

NOTES

- DO NOT SCALE FROM THIS DRAWING.
- ALL MEASUREMENTS ARE IN MILLIMETERS UNLESS NOTED OTHERWISE.
- ALL LEVELS ARE METERS ABOVE ORDNANCE DATUM (mOD) UNLESS NOTED OTHERWISE.
- THE DART+ COASTAL NORTH PROJECT IS POSITIONED ACCORDING TO THE IRISH TRANSVERSE MERCATOR (ITM) COORDINATE SYSTEM.
- LOCATION OF ALL BURIED SERVICES TO BE CONFIRMED PRIOR TO CONSTRUCTION.

LEGEND

- EXISTING ELEMENTS
- PROPOSED ELEMENTS
- ELEMENTS TO BE REMOVED

Disclaimer
© Irish Rail (2023). This drawing is confidential and the copyright in it is owned by Irish Rail. This drawing must not be either loaned, copied or otherwise reproduced in whole or in part or used for any purpose without the prior permission of Irish Rail.
© OpenStreetMap contributors
© Ordnance Survey Ireland and Government of Ireland. All O.S. data used for plans are printed under Copyright Ordnance Survey Ireland 0039723 (OSi Aerial Data or OSi Lidar Data) & 2023/OSi_NIMA_180 (OSi Vector Data). All elevations are in metres and relate to OSi Goid Model (OSGM02) Mean Head as defined by existing Project Control. All Co-ordinates are in Irish Transverse Mercator Grid (ITM) as defined by OSi active GPS station Tallaght College (TLLG).



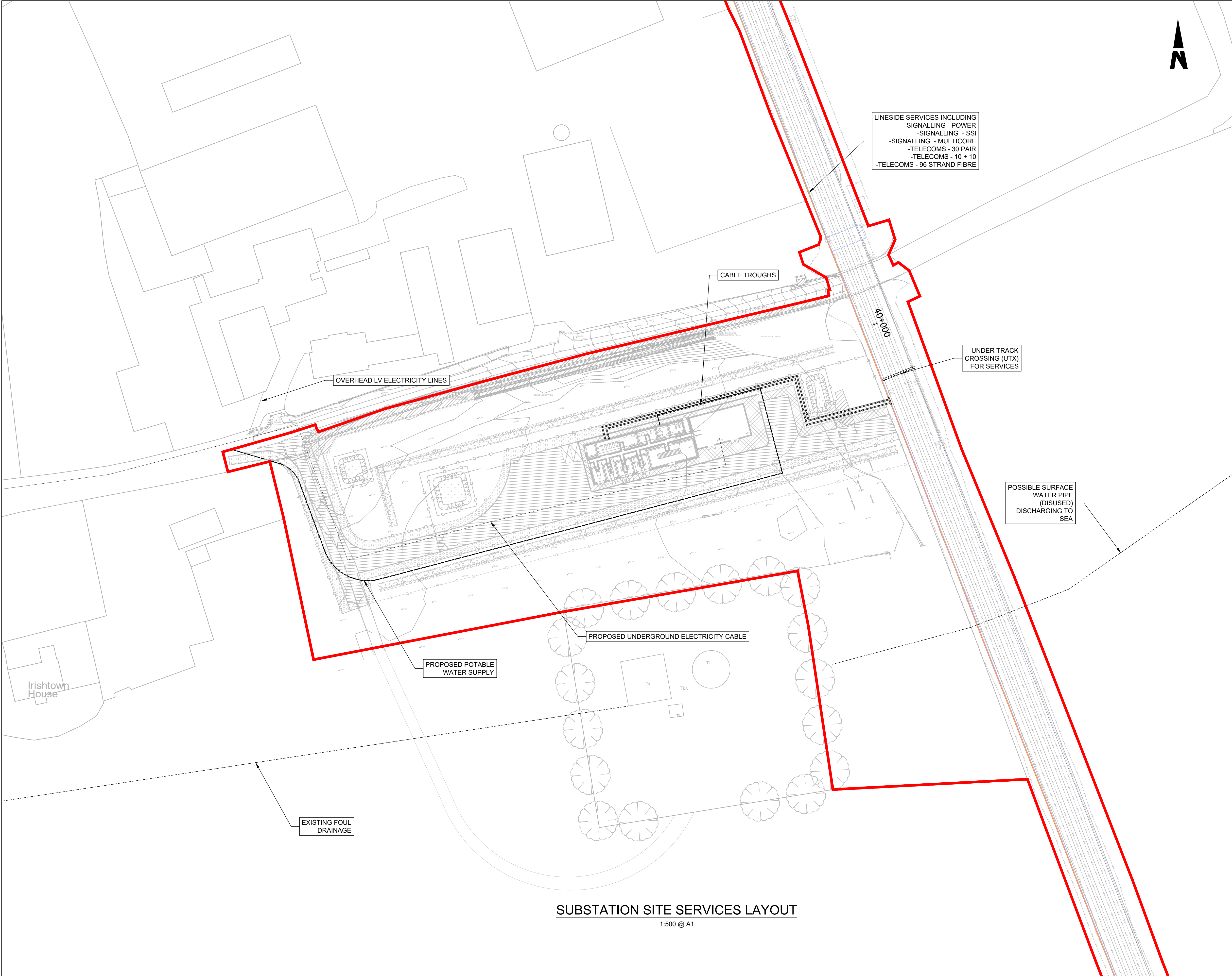
Rev	Date	Drm	Chk'd	App'd	Description
P01	17/11/2023	SF	EJ	DB	PLANNING ISSUE

Client Iarnród Éireann Irish Rail		Engineering Designer ARUP		
Date 01/06/2023	Scale SHOWN @ A1 SHOWN @ A3	Drawn SF	Checked EJ	Approved DB
Project Code D+WP56	Originator Code ARP	QMS Code 280275-00		

Project Title DART+ COASTAL NORTH				
Drawing Title GORMANSTON SUBSTATION SECTION AND ELEVATIONS				
Drawing File Name D+WP56-ARP-P4-NL-DR-RO-001011	Sheet Number 01 of 01	Status S3	Rev P01	

DO NOT SCALE USE FIGURED DIMENSIONS ONLY

C:\bms\arup-eur-pw-01\dms29549\ID+WP56-ARP-P4-NL-SR-RO-001012.dwg

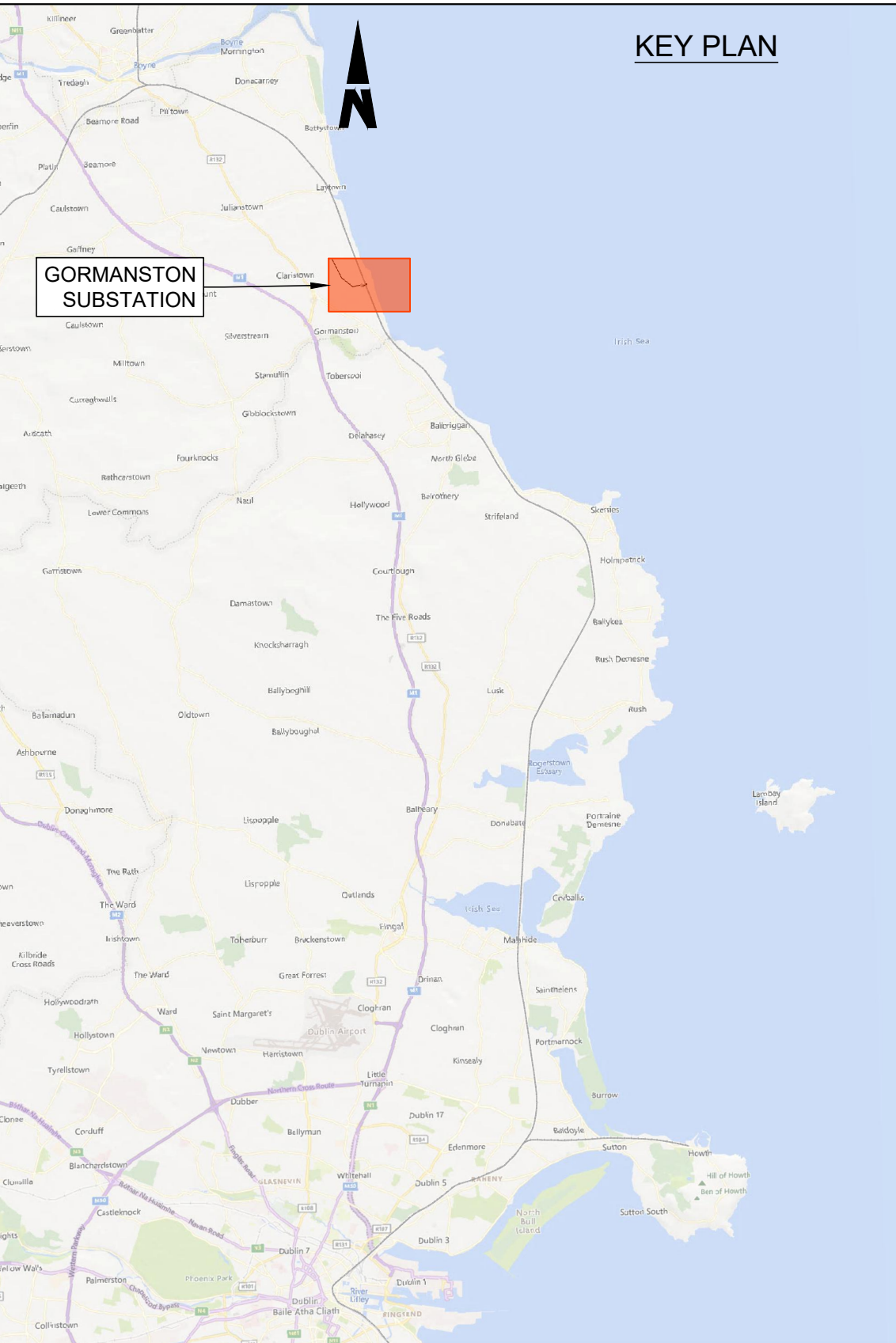


NOTES

- DO NOT SCALE FROM THIS DRAWING.
- LOCATION OF PROPOSED INCOMING ESB CABLE TO BE CONFIRMED.
- LOCATION OF ALL BURIED SERVICES TO BE CONFIRMED PRIOR TO CONSTRUCTION.
- ALL DIMENSIONS ARE IN METERS, UNLESS OTHERWISE STATED.
- ALL CHAINAGES ARE IN KILOMETERS. (36+250 = 36.25km)
- DRAWING TO BE PRINTED IN COLOUR.
- ALL LEVELS ARE IN METERS ABOVE ORDNANCE DATUM (mOD)
- UNLESS OTHERWISE STATED.
- THE DART+ COASTAL NORTH PROJECT IS POSITIONED ACCORDING TO THE IRISH TRANSVERSE MERCATOR (ITM) COORDINATE SYSTEM
- SURFACE WATER AND FOUL DRAINAGE IS INDICATED ON THE DRAINAGE DRAWING.

LEGEND

- TEL - 10 + 10 (MOSTLY REDUNDANT)
- TEL - 30 PAIR
- SIG - MULTICORE
- SIG - SSI
- SIG - POWER
- FIBRE (96 STRAND, APPROX. 10 OCCUPIED BY IE, OTHERS THIRD PARTY)
- THIRD PARTY FIBRE
- DEVELOPMENT BOUNDARY
- PROPOSED POTABLE WATER
- PROPOSED ESB 38kV BURIED CABLES
- PROPOSED ESB 38kV OVERHEAD CABLES



Disclaimer
© Irish Rail (2023). This drawing is confidential and the copyright in it is owned by Irish Rail. This drawing must not be either loaned, copied or otherwise reproduced in whole or in part or used for any purpose without the prior permission of Irish Rail.
© OpenStreetMap contributors
© Ordnance Survey Ireland and Government of Ireland. All O.S. data used for plans are printed under Copyright Ordnance Survey Ireland 0039723 (OSI Aerial Data or OSI Lidar Data) & 2023/OSI_NMA_180 (OSI Vector Data). All elevations are in metres and relate to OSI Goid Model (OSGM02) Mean Head as defined by existing Project Control. All Co-ordinates are in Irish Transverse Mercator Grid (ITM) as defined by OSI active GPS station Tallaght College (TLLG).



Rev	Date	Dm	Chk'd	App'd	Description
P01	17/11/2023	SF	EJ	DB	PLANNING ISSUE

Client Iarnród Éireann Irish Rail		Engineering Designer ARUP		
Date 01/06/2023	Scale 1:500 @ A1 1:1000 @ A3	Drawn SF	Checked EJ	Approved DB
Project Code D+WP56	Originator Code ARP	QMS Code 280275-00		

Project Title DART+ COASTAL NORTH				
Drawing Title GORMANSTON SUBSTATION SERVICES LAYOUT				
Drawing File Name D+WP56-ARP-P4-NL-DR-RO-001012	Sheet Number 01 of 01	Status S3	Rev P01	

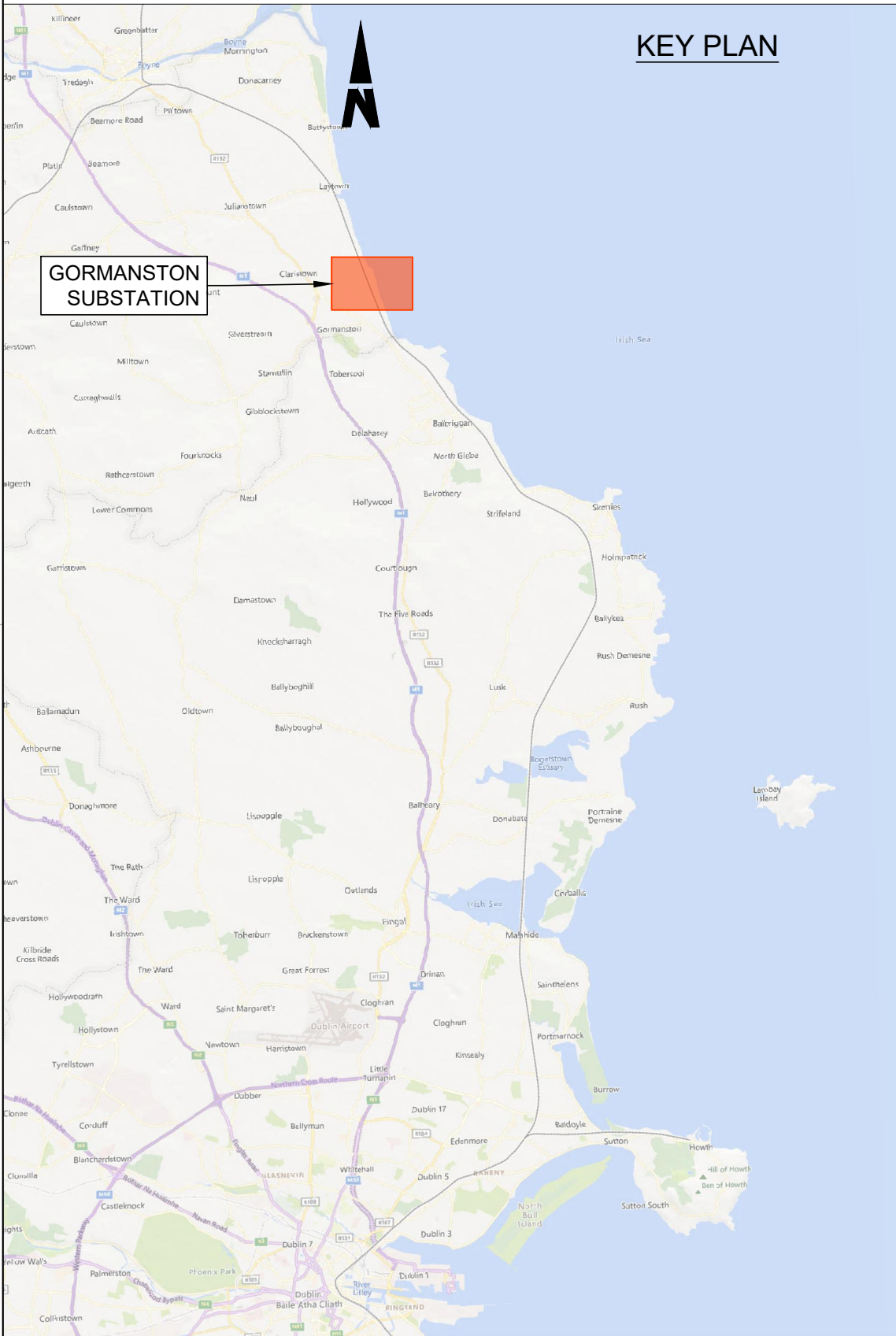
DO NOT SCALE USE FIGURED DIMENSIONS ONLY



- NOTES
- DO NOT SCALE FROM THIS DRAWING.
 - LOCATION OF ALL BURIED SERVICES TO BE CONFIRMED PRIOR TO CONSTRUCTION.
 - ALL DIMENSIONS ARE IN METERS, UNLESS NOTED OTHERWISE.
 - ALL CHAINAGES ARE IN KILOMETERS. (36+250 = 36.25km)
 - DRAWING TO BE PRINTED IN COLOUR.
 - ALL LEVELS ARE IN METERS ABOVE ORDNANCE DATUM (mOD) UNLESS OTHERWISE STATED.
 - THE DART+ COASTAL NORTH PROJECT IS POSITIONED ACCORDING TO THE IRISH TRANSVERSE MERCATOR (ITM) COORDINATE SYSTEM.

- LEGEND
- INSPECTION CHAMBER
 - GULLY TAILS
 - SURFACE WATER GULLY, THESE ARE SHOWN INDICATIVELY, SPACING TBC
 - SURFACE WATER FLOW PATHS (GENERAL FALLS OF THE ROAD TO BE 2.5%)
 - PROPOSED FILTER TRENCH WITH FLOW DIRECTION. PLEASE REFER TO D+WP56-ARP-P3-NL-DR-CX-000592 FOR DETAILS
 - PROPOSED 225mm DIAMETER PVC PIPE WITH FLOW DIRECTION
 - FOUL MANHOLE
 - FOUL SEWER WITH FLOW DIRECTION
 - DEVELOPMENT BOUNDARY

- DESIGN INFORMATION
- DESIGN RETURN PERIOD: 1:100yr
 - CLIMATE CHANGE UPLIFT: 20%



SUBSTATION SITE DRAINAGE LAYOUT
1:250 @ A1

Disclaimer
© Irish Rail (2023). This drawing is confidential and the copyright in it is owned by Irish Rail. This drawing must not be either loaned, copied or otherwise reproduced in whole or in part or used for any purpose without the prior permission of Irish Rail.
© OpenStreetMap contributors
© Ordnance Survey Ireland and Government of Ireland. All O.S. data used for plans are printed under Copyright Ordnance Survey Ireland 0039723 (OSI Aerial Data or OSI Lidar Data) & 2023/OSI_NMA_180 (OSI Vector Data). All elevations are in metres and relate to OSI Goid Model (OSGM02) Mean Head as defined by existing Project Control. All Co-ordinates are in Irish Transverse Mercator Grid (ITM) as defined by OSI active GPS station Tallaght College (TLLG).



Rev	Date	Dwn	Chk'd	App'd	Description
P01	17/11/2023	SF	EJ	DB	PLANNING ISSUE

Client Iarnród Éireann Irish Rail		Engineering Designer ARUP		
Date 01/06/2023	Scale 1:250 @ A1 1:1000 @ A3	Drawn SF	Checked EJ	Approved CC
Project Code D+WP56	Originator Code ARP	QMS Code 280275-00		

Project Title DART+ COASTAL NORTH	Drawing Title GORMANSTON SUBSTATION DRAINAGE PLAN	Drawing File Name D+WP56-ARP-P4-NL-DR-RO-001013	Sheet Number 01 of 01	Status S3	Rev P01
---	---	--	--------------------------	--------------	------------

DO NOT SCALE USE FIGURED DIMENSIONS ONLY