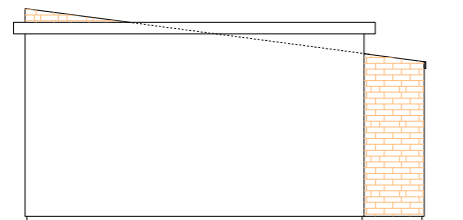
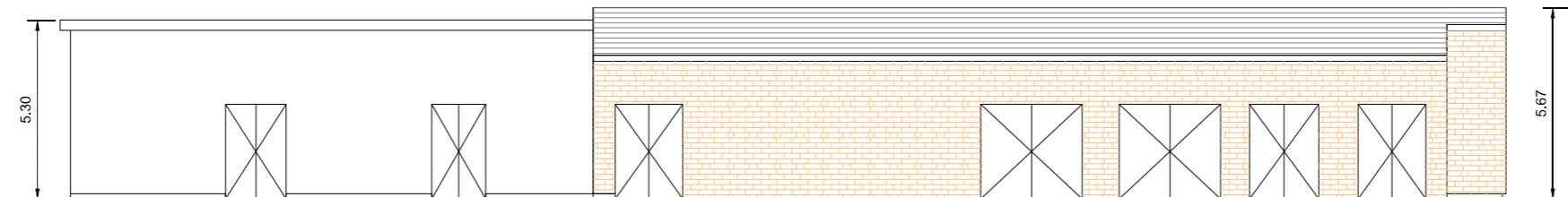


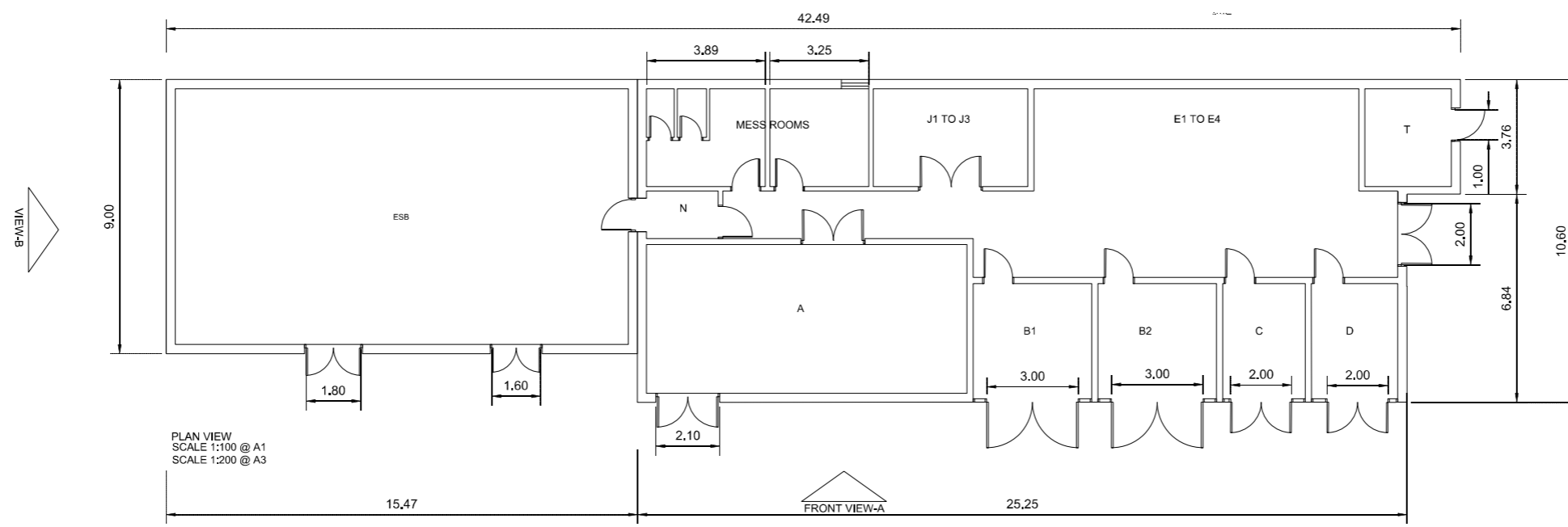
Notes:



VIEW B
SCALE 1:100 @ A1
SCALE 1:200 @ A3



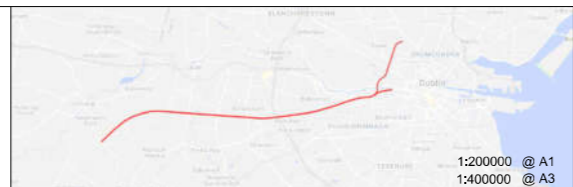
FRONT VIEW A
SCALE 1:100 @ A1
SCALE 1:200 @ A3



PLAN VIEW
SCALE 1:100 @ A1
SCALE 1:200 @ A3

POS.	DESIGNATION
A	HIGH VOLTAGE SWITCHBOARD
B1	TRACTION TRANSFORMER 1
B2	TRACTION TRANSFORMER 2
C	AUXILIARY TRANSFORMER
D	DIESEL GENERATOR
E1	TRACK FEEDER CIRCUIT BREAKERS (HSCB)
E2	RECTIFIER FEEDER BREAKER
E3	RECTIFIER
E4	RECTIFIER RETURN BREAKER
J1	UPS
J2	ESSENTIAL LV PANEL (110 V DC DISTRIBUTION)
J3	BATTERY CABINET
N	ESB METER CABINET
T	TELECOM

© Irish Rail (2022). This drawing is confidential and the copyright in it is owned by Irish Rail. This drawing must not be either loaned, copied or otherwise reproduced in whole or in part or used for any purpose without the prior permission of Irish Rail.
© Ordnance Survey Ireland and government of Ireland. All O.S. Data used for plans are printed under: "Copyright Ordnance Survey Ireland" Survey No. 0039722, (OS Aerial Data or OS Lidar Data) & Survey No. 2022/OSI.NMA.160 (OS Vector Data).
All elevations are in metres and relate to OSI Geoid Model (OSGM02) Mean Head as defined by existing Project Control.
All Co-ordinates are in Irish Transverse Mercator Grid (ITM) as defined by OSI active GPS station Tallaght College (TLLG).



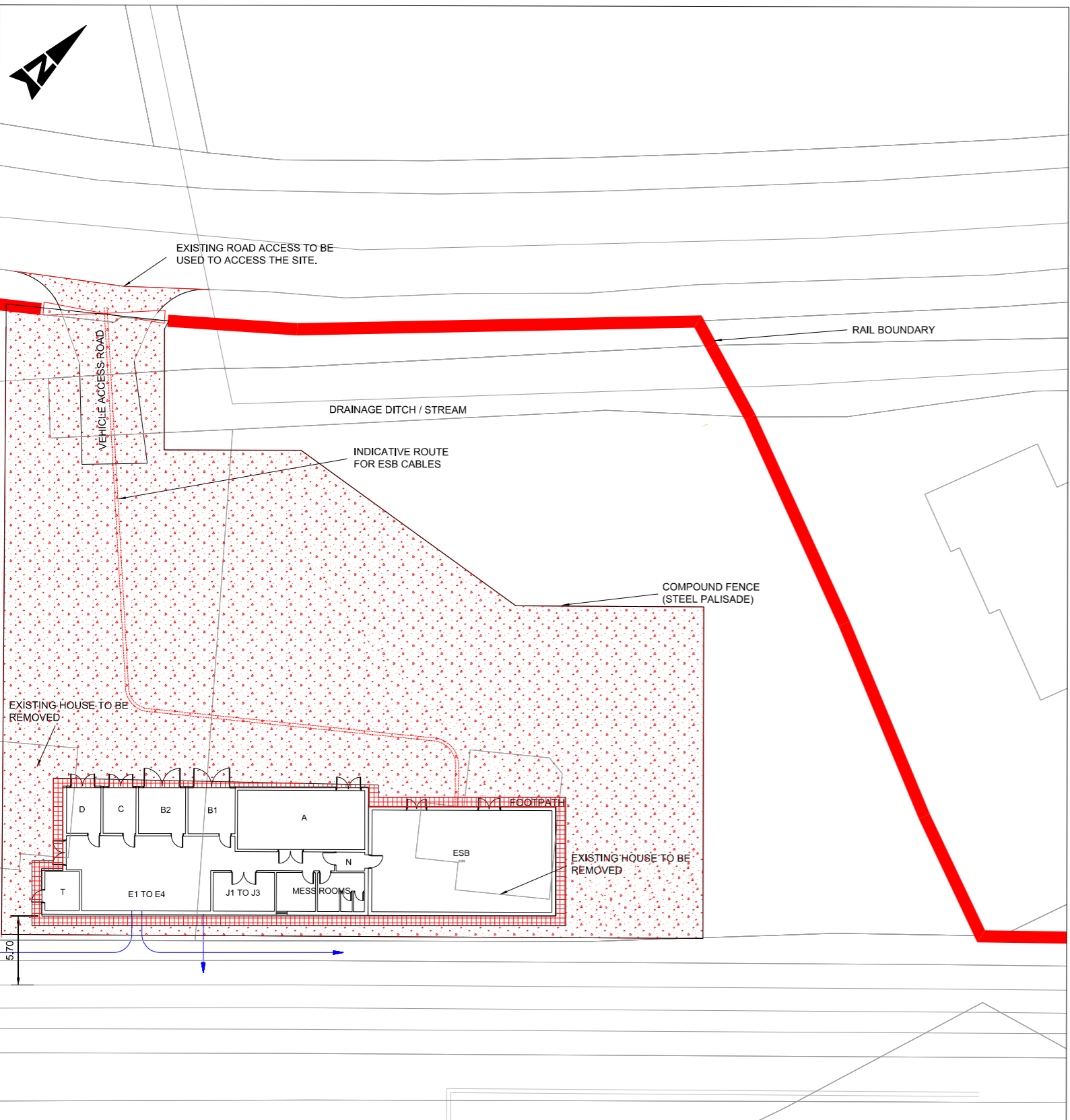
Rev	Date	Drn	Chk'd	App'd	Description
v01	10/11/2022	AA	NF	PT	PLANNING ISSUE

Client Iarnród Éireann Irish Rail		Engineering Designer ATKINS TYPSA Member of the SNC Lavalin Group Supported by: rps	
Date 10/11/2022	Scale AS SHOWN @ A1 @ A3	Drawn AA	Checked NF
Project Code 5195886	Issuer TTA	Approved PT	QMS Code

Project Title DART + SOUTH WEST	Drawing Title HAZELHATCH SUBSTATION BUILDING PLAN AND ELEVATIONS
Drawing File Name DP-04-23-DWG-RO-TTA-18851	Version v01
Status S3	

DO NOT SCALE USE FIGURED DIMENSIONS ONLY

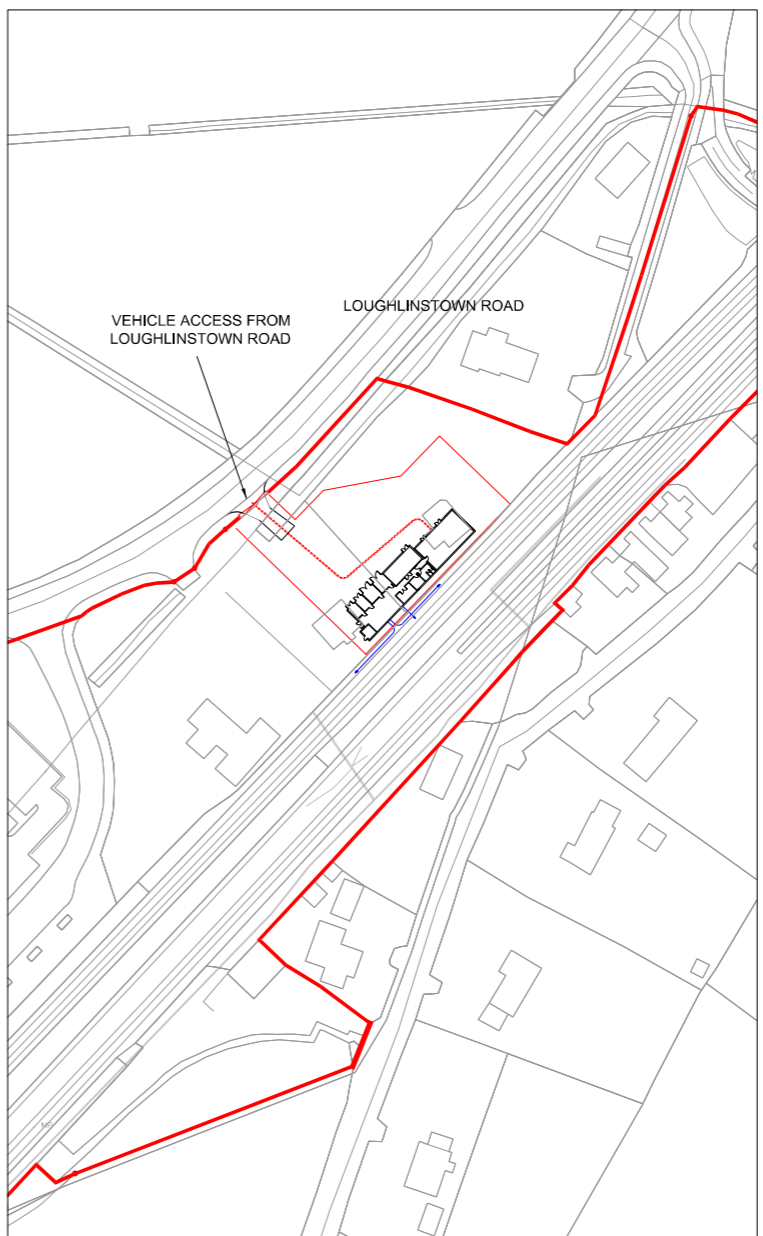
Drawing1.dwg



SUBSTATION LAYOUT PLAN
 1:200 @ A1
 1:400 @ A3



SUBSTATION LOCATION PLAN
 GRID REFERENCE
 LATITUDE: 53.324207 LONGITUDE: -6.521190

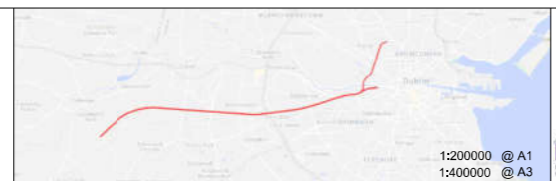


SUBSTATION ACCESS PLAN
 1:1000 @ A1
 1:1000 @ A3

KEY:
 BLUE - INDICATIVE DC CABLE ROUTE
 RED - NEW EQUIPMENT/LAND BOUNDARIES
 ESB - ELECTRICITY SUPPLY BOARD

POS.	DESIGNATION
A	HIGH VOLTAGE SWITCHBOARD
B1	TRACTION TRANSFORMER 1
B2	TRACTION TRANSFORMER 2
C	AUXILIARY TRANSFORMER
D	DIESEL GENERATOR
E1	TRACK FEEDER CIRCUIT BREAKERS (HSCB)
E2	RECTIFIER FEEDER BREAKER
E3	RECTIFIER
E4	RECTIFIER RETURN BREAKER
J1	UPS
J2	ESSENTIAL LV PANEL (110 V DC DISTRIBUTION)
J3	BATTERY CABINET
N	ESB METER CABINET
T	TELECOM

© Irish Rail (2022). This drawing is confidential and the copyright in it is owned by Irish Rail. This drawing must not be either loaned, copied or otherwise reproduced in whole or in part or used for any purpose without the prior permission of Irish Rail.
 © Ordnance Survey Ireland and government of Ireland. All O.S. Data used for plans are printed under: "Copyright Ordnance Survey Ireland" Survey No. 0039722, (OSI Aerial Data or OSI Lidar Data) & Survey No. 2022/OSI_NMA_186 (OSI Vector Data).
 All elevations are in metres and relate to OSI Geoid Model (OSGM02) Mean Head as defined by existing Project Control. All Co-ordinates are in Irish Transverse Mercator Grid (ITM) as defined by OSI active GPS station Tallaght College (TLTG).



Rev	Date	Drn	Chk'd	App'd	Description
v01	10/11/2022	AA	NF	PT	PLANNING ISSUE

Client: **Iarnród Éireann Irish Rail**

Engineering Designer: **ATKINS** (Member of the SNC Lavalin Group)

Supported by: **rps**

Date: 10/11/2022 Scale: AS SHOWN @ A1 @ A3
 Project Code: 5195886 Issuer: TTA
 Drawn: AA Checked: NF Approved: PT
 QMS Code

Project Title: **DART + SOUTH WEST**

Drawing Title: **HAZELHATCH SUBSTATION LOCATION PLAN AND LAYOUT**

Drawing File Name: DP-04-23-DWG-RO-TTA-18850 Version: v01 Status: S3

DO NOT SCALE USE FIGURED DIMENSIONS ONLY