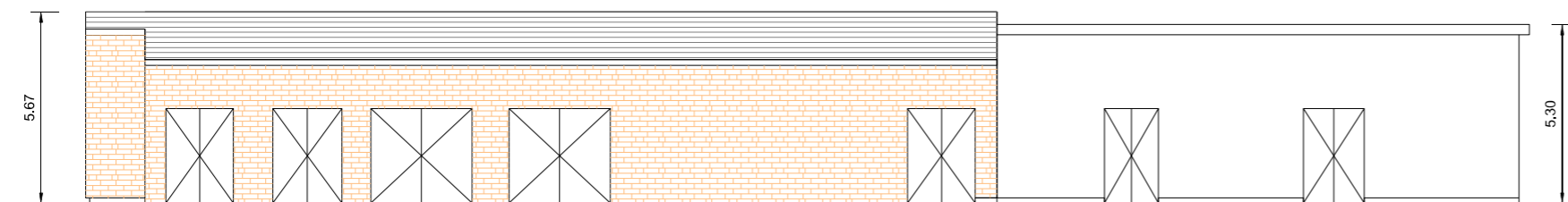
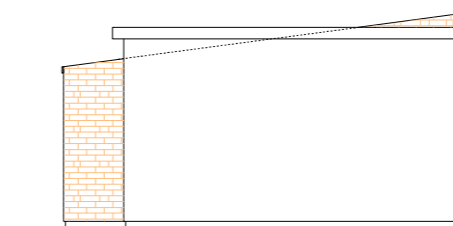


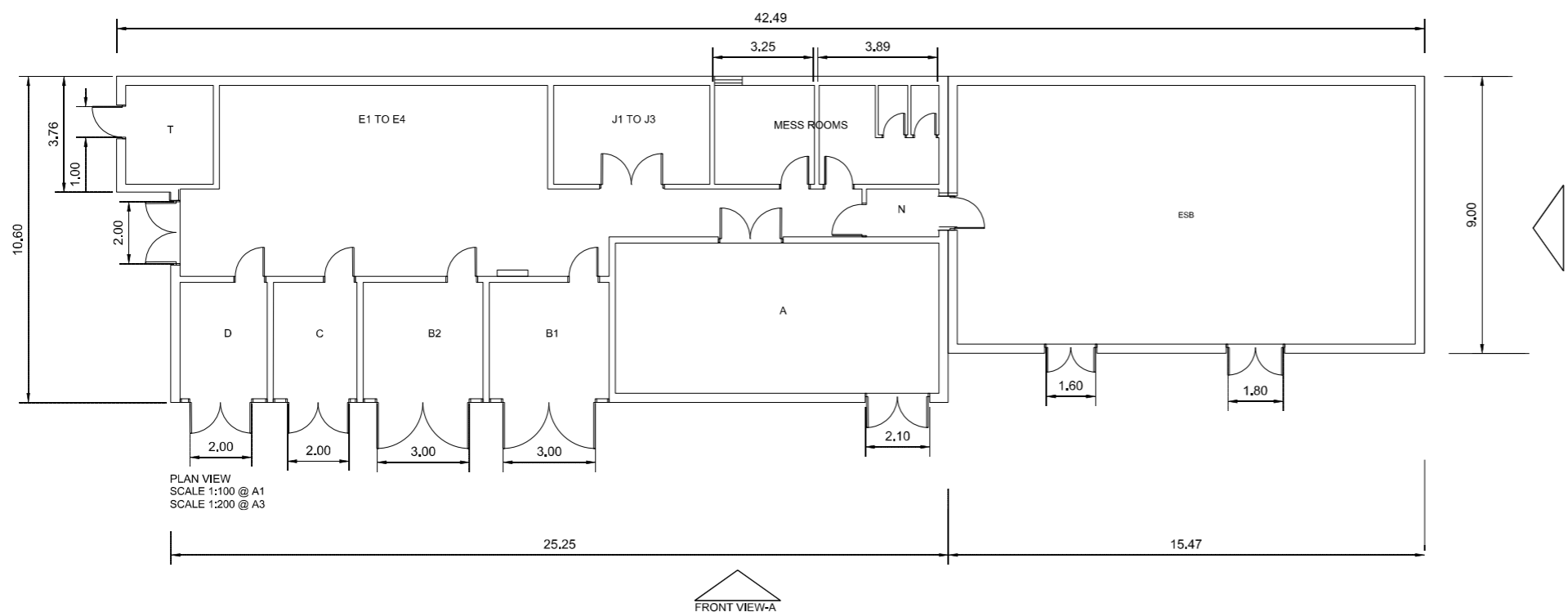
Notes:



FRONT VIEW A
SCALE 1:100 @ A1
SCALE 1:200 @ A3



VIEW B
SCALE 1:100 @ A1
SCALE 1:200 @ A3

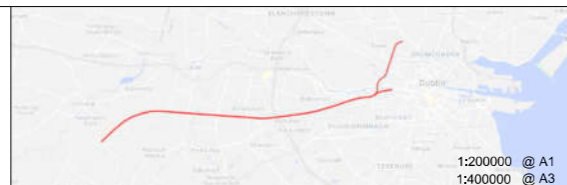


PLAN VIEW
SCALE 1:100 @ A1
SCALE 1:200 @ A3

FRONT VIEW-A

| POS. | DESIGNATION |
|------|--|
| A | HIGH VOLTAGE SWITCHBOARD |
| B1 | TRACTION TRANSFORMER 1 |
| B2 | TRACTION TRANSFORMER 2 |
| C | AUXILIARY TRANSFORMER |
| D | DIESEL GENERATOR |
| E1 | TRACK FEEDER CIRCUIT BREAKERS (HSCB) |
| E2 | RECTIFIER FEEDER BREAKER |
| E3 | RECTIFIER |
| E4 | RECTIFIER RETURN BREAKER |
| J1 | UPS |
| J2 | ESSENTIAL LV PANEL (110 V DC DISTRIBUTION) |
| J3 | BATTERY CABINET |
| N | ESB METER CABINET |
| T | TELECOM |

© Irish Rail (2022). This drawing is confidential and the copyright in it is owned by Irish Rail. This drawing must not be either loaned, copied or otherwise reproduced in whole or in part or used for any purpose without the prior permission of Irish Rail.
© Ordnance Survey Ireland and government of Ireland. All O.S. Data used for plans are printed under: "Copyright Ordnance Survey Ireland" Survey No. 0039722, (OS Aerial Data or OS Lidar Data) & Survey No. 2022/OSI.NMA.160 (OS Vector Data).
All elevations are in metres and relate to OSI Geoid Model (OSGM02) Mean Head as defined by existing Project Control.
All Co-ordinates are in Irish Transverse Mercator Grid (ITM) as defined by OSI active GPS station Tallaght College (TLLG).

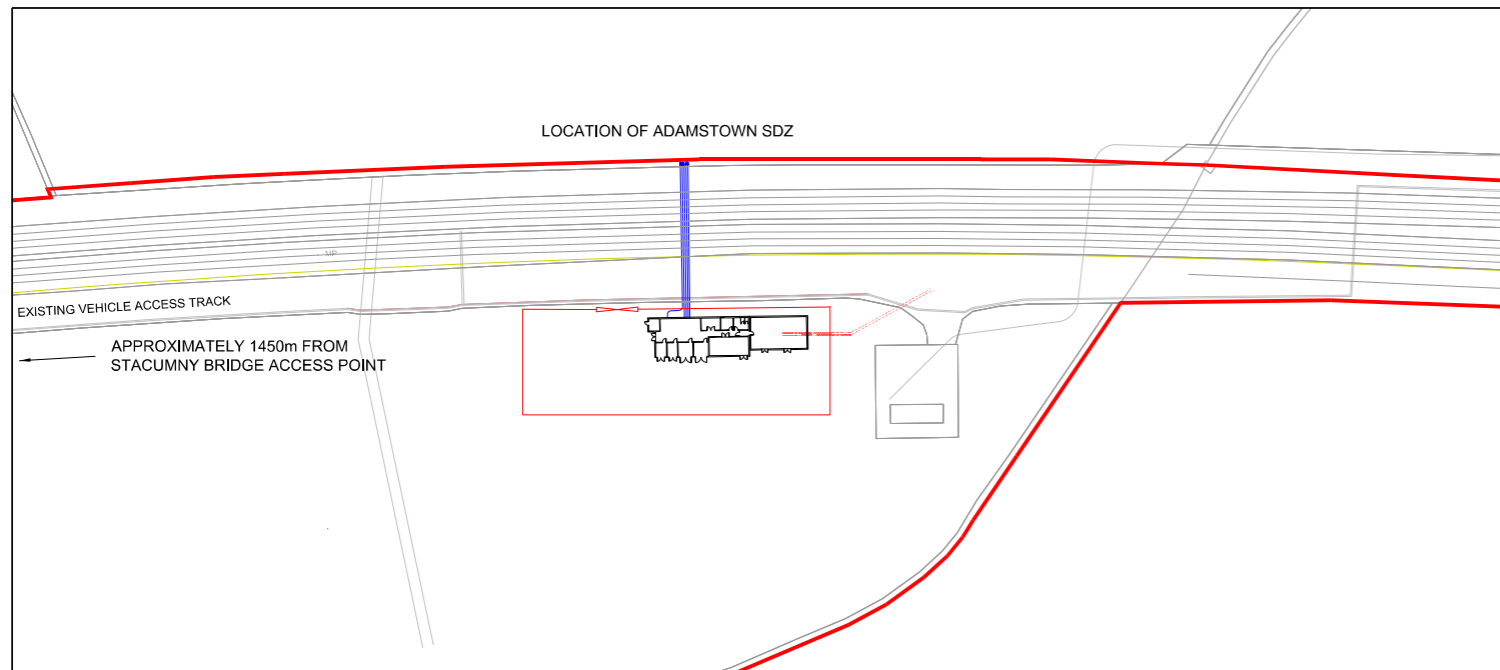


| Rev | Date | Drn | Chk'd | App'd | Description |
|-----|------------|-----|-------|-------|----------------|
| v01 | 10/11/2022 | AA | NF | PT | PLANNING ISSUE |

Client
Irish Rail
Date: 10/11/2022
Project Code: 5195886

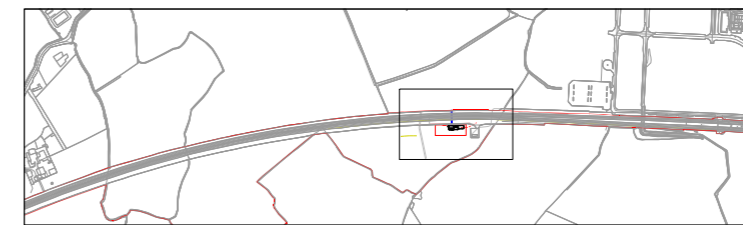
Engineering Designer
ATKINS
Supported by: **rps**
Drawn: AA, Checked: NF, Approved: PT
QMS Code

Project Title: **DART + SOUTH WEST**
Drawing Title: **ADAMSTOWN SUBSTATION BUILDING PLAN AND ELEVATIONS**
Drawing File Name: DP-04-23-DWG-RO-TTA-18853
Version: v01
Status: S3

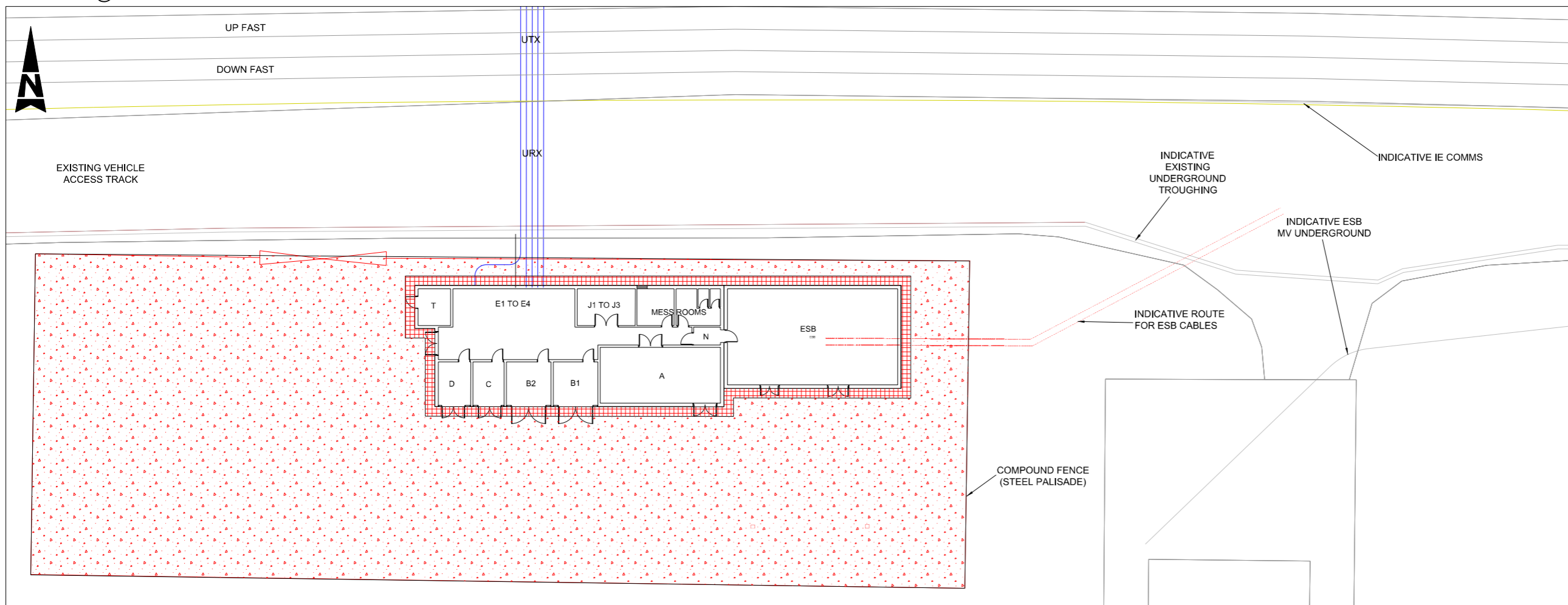


SUBSTATION ACCESS PLAN

1:1000 @ A1
1:2000 @ A3



SUBSTATION LOCATION PLAN
GRID REFERENCE
LATITUDE: 53.336085 LONGITUDE: -6.479814



KEY:

- BLUE - INDICATIVE DC CABLE ROUTE
- RED - NEW EQUIPMENT/LAND BOUNDARIES
- UTX - UNDER TRACK CROSSING
- URX - UNDER ROAD CROSSING
- ESB - ELECTRICITY SUPPLY BOARD
- SDZ - SPECIAL DEVELOPMENT ZONE

| POS. | DESIGNATION |
|------|--|
| A | HIGH VOLTAGE SWITCHBOARD |
| B1 | TRACTION TRANSFORMER 1 |
| B2 | TRACTION TRANSFORMER 2 |
| C | AUXILIARY TRANSFORMER |
| D | DIESEL GENERATOR |
| E1 | TRACK FEEDER CIRCUIT BREAKERS (HSCB) |
| E2 | RECTIFIER FEEDER BREAKER |
| E3 | RECTIFIER |
| E4 | RECTIFIER RETURN BREAKER |
| J1 | UPS |
| J2 | ESSENTIAL LV PANEL (110 V DC DISTRIBUTION) |
| J3 | BATTERY CABINET |
| N | ESB METER CABINET |
| T | TELECOM |

SUBSTATION LAYOUT PLAN

1:200 @ A1
1:400 @ A3

© Irish Rail (2022). This drawing is confidential and the copyright in it is owned by Irish Rail. This drawing must not be either loaned, copied or otherwise reproduced in whole or in part or used for any purpose without the prior permission of Irish Rail.
© Ordnance Survey Ireland and government of Ireland. All O.S. Data used for plans are printed under: "Copyright Ordnance Survey Ireland" Survey No. 0039722, (OSI Aerial Data or OSI Lidar Data) & Survey No. 2022/OSI_NIMA_180 (OSI Vector Data).
All elevations are in metres and relate to OSI Geoid Model (OSGM02) Mean Head as defined by existing Project Control.
All Co-ordinates are in Irish Transverse Mercator Grid (ITM) as defined by OSI active GPS station Tallaght College (TLLG).



| Rev | Date | Dm | Chk'd | App'd | Description |
|-----|------------|----|-------|-------|----------------|
| v01 | 10/11/2022 | AA | NF | PT | PLANNING ISSUE |

| | | | | | |
|--|-----------------------------|---|--|---|---|
| Client Iarnród Éireann Irish Rail | | Engineering Designer ATKINS TYPSA Member of the SNC-Lavalin Group | | Project Title DART + SOUTH WEST | |
| Date 10/11/2022 | Scale AS SHOWN @ A1 @ A3 | Drawn AA | Checked NF | Approved PT | Drawing Title ADAMSTOWN SUBSTATION LOCATION PLAN AND LAYOUT |
| Project Code 5195886 | Issuer TTA | QMS Code | Drawing File Name DP-04-23-DWG-RO-TTA-18852 | | |

| | |
|----------------|--------------|
| Version v01 | Status S3 |
|----------------|--------------|

DO NOT SCALE USE FIGURED DIMENSIONS ONLY

Drawing1.dwg