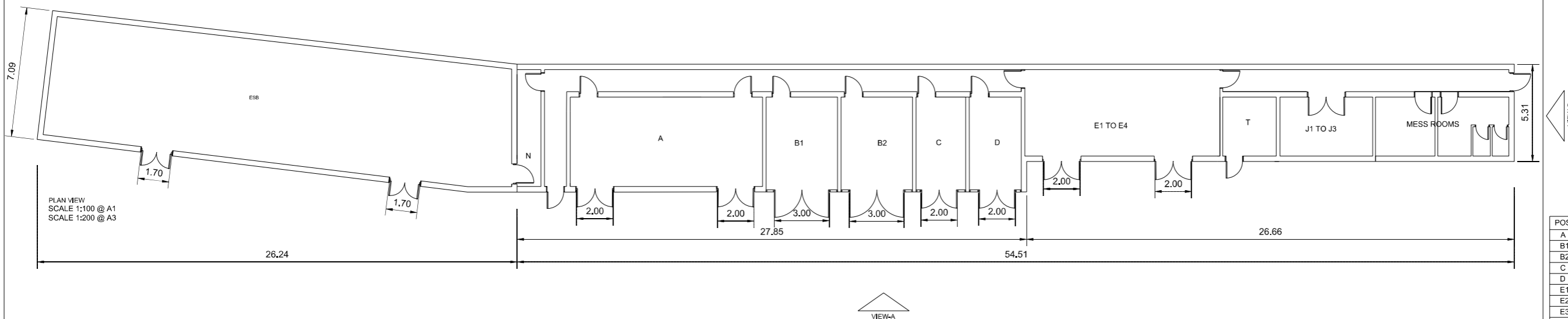
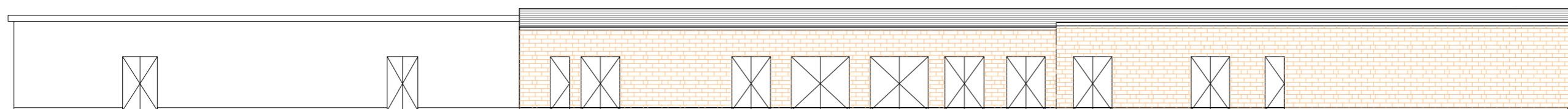
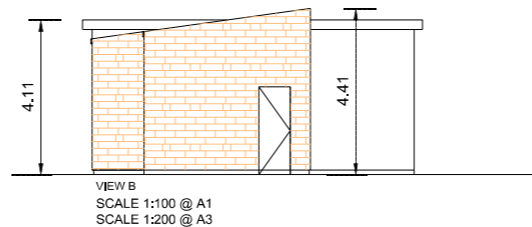
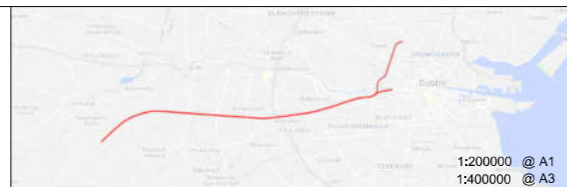


Notes:



POS.	DESIGNATION
A	HIGH VOLTAGE SWITCHBOARD
B1	TRACTION TRANSFORMER 1
B2	TRACTION TRANSFORMER 2
C	AUXILIARY TRANSFORMER
D	DIESEL GENERATOR
E1	TRACK FEEDER CIRCUIT BREAKERS (HSCB)
E2	RECTIFIER FEEDER BREAKER
E3	RECTIFIER
E4	RECTIFIER RETURN BREAKER
J1	UPS
J2	ESSENTIAL LV PANEL (110 V DC DISTRIBUTION)
J3	BATTERY CABINET
N	ESB METER CABINET
T	TELECOM

© Irish Rail (2022). This drawing is confidential and the copyright in it is owned by Irish Rail. This drawing must not be either loaned, copied or otherwise reproduced in whole or in part or used for any purpose without the prior permission of Irish Rail.
© Ordnance Survey Ireland and government of Ireland. All O.S. Data used for plans are printed under: "Copyright Ordnance Survey Ireland" Survey No. 0039722, (OS Aerial Data or OS Lidar Data) & Survey No. 2022/OSI/NMA_150 (OS Vector Data).
All elevations are in metres and relate to OSI Geoid Model (OSGM02) Mean Head as defined by existing Project Control.
All Co-ordinates are in Irish Transverse Mercator Grid (ITM) as defined by OSI active GPS station Tallaght College (TLLG).



Rev	Date	Drn	Chk'd	App'd	Description
v01	10/11/2022	AA	NF	PT	PLANNING ISSUE

Client Iarnród Éireann Irish Rail		Engineering Designer ATKINS TYPSA Member of the SNC Lavalin Group Supported by: rps	
Date 10/11/2022	Scale AS SHOWN @ A1 @ A3	Drawn AA	Checked NF
Project Code 5195886	Issuer TTA	Approved PT	QMS Code

Project Title DART + SOUTH WEST	
Drawing Title ISLANDBRIDGE SUBSTATION BUILDING PLAN AND ELEVATIONS	
Drawing File Name DP-04-23-DWG-RO-TTA-18861	Version v01
Status S3	

DO NOT SCALE USE FIGURED DIMENSIONS ONLY

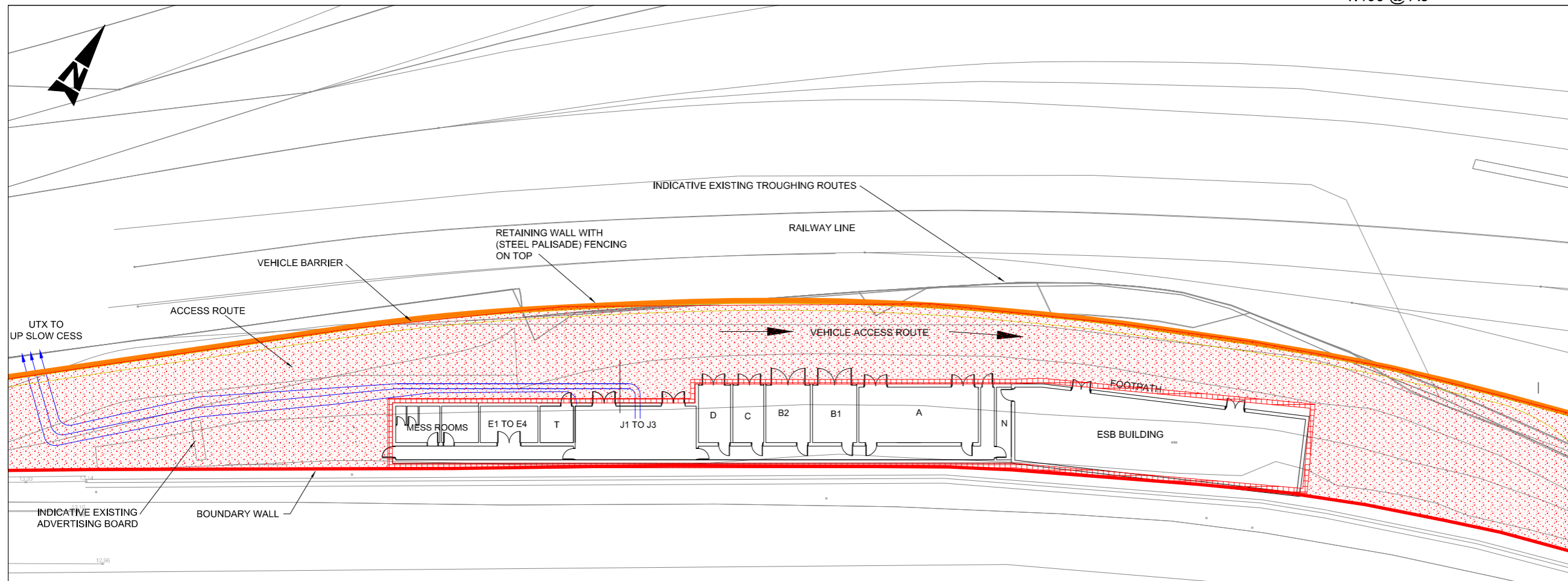
Drawing1.dwg

SUBSTATION ACCESS PLAN
 1:1000 @ A1
 1:2000 @ A3



SUBSTATION LOCATION PLAN
 GRID REFERENCE
 LATITUDE: 53.345063 LONGITUDE: -6.303291

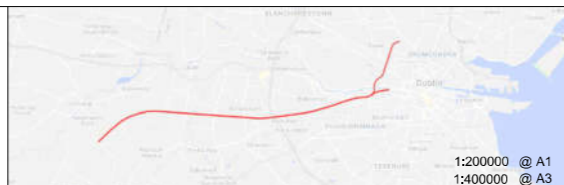
SUBSTATION LAYOUT PLAN
 1:200 @ A1
 1:400 @ A3



KEY:
 BLUE - INDICATIVE DC CABLE ROUTE
 ORANGE - RETAINING WALL
 RED - NEW EQUIPMENT/LAND BOUNDARIES
 UTX - UNDER TRACK CROSSING
 ESB - ELECTRICITY SUPPLY BOARD

POS.	DESIGNATION
A	HIGH VOLTAGE SWITCHBOARD
B1	TRACTION TRANSFORMER 1
B2	TRACTION TRANSFORMER 2
C	AUXILIARY TRANSFORMER
D	DIESEL GENERATOR
E1	TRACK FEEDER CIRCUIT BREAKERS (HSCB)
E2	RECTIFIER FEEDER BREAKER
E3	RECTIFIER
E4	RECTIFIER RETURN BREAKER
J1	UPS
J2	ESSENTIAL LV PANEL (110 V DC DISTRIBUTION)
J3	BATTERY CABINET
N	ESB METER CABINET
T	TELECOM

© Irish Rail (2022). This drawing is confidential and the copyright in it is owned by Irish Rail. This drawing must not be either loaned, copied or otherwise reproduced in whole or in part or used for any purpose without the prior permission of Irish Rail.
 © Ordnance Survey Ireland and government of Ireland. All O.S. Data used for plans are printed under: "Copyright Ordnance Survey Ireland" Survey No. 0039722, (OSI Aerial Data or OSI Lidar Data) & Survey No. 2022/OSI.NMA.150 (OSI Vector Data).
 All elevations are in metres and relate to OSI Geoid Model (OSGM02) Mean Head as defined by existing Project Control.
 All Co-ordinates are in Irish Transverse Mercator Grid (ITM) as defined by OSI active GPS station Tallaght College (TLLG).



Rev	Date	Drn	Chk'd	App'd	Description
v01	10/11/2022	AA	NF	PT	PLANNING ISSUE

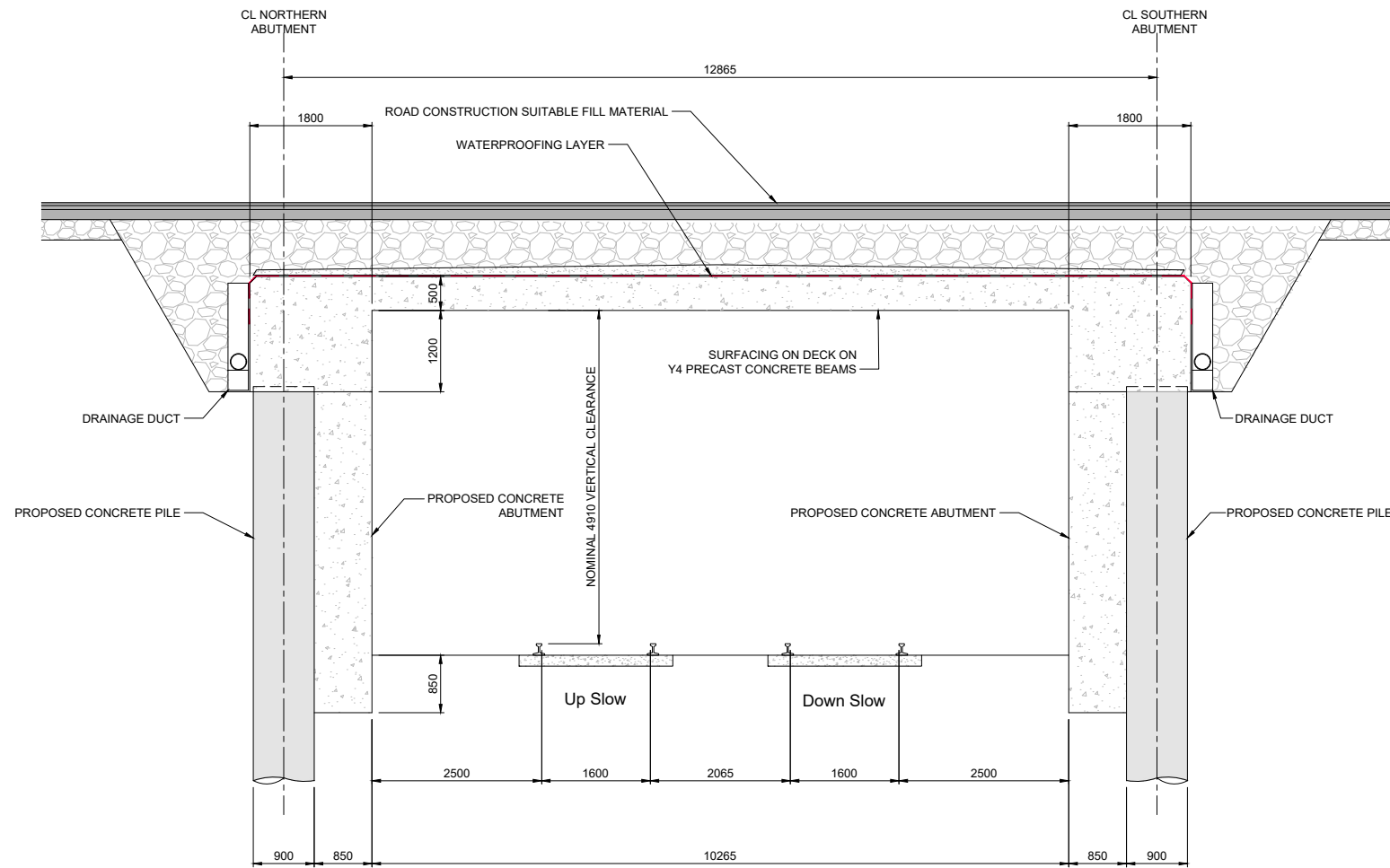
Client Iarnród Éireann Irish Rail		Engineering Designer ATKINS TYPSA Member of the SNC Lavalin Group Supported by: rps	
Date 10/11/2022	Scale AS SHOWN @ A1 @ A3	Drawn AA	Checked NF
Project Code 5195886	Issuer TTA	Approved PT	QMS Code

Project Title DART + SOUTH WEST	Drawing Title ISLANDBRIDGE SUBSTATION LOCATION PLAN AND LAYOUT
Drawing File Name DP-04-23-DWG-RO-TTA-18860	Version v01
Status S3	

DO NOT SCALE USE FIGURED DIMENSIONS ONLY

DRAWING NOTES:

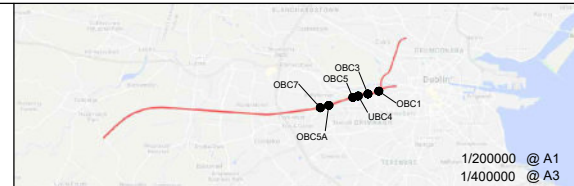
1. All dimensions are in millimetres unless noted otherwise
2. All levels are in metres relative to National Ordnance Datum unless noted otherwise
3. Chainages are expressed in metres
4. All angles are in degrees (0°-360°) unless noted otherwise
5. Dimensions are not to be scaled from the drawings



B CROSS SECTION
18937

V:\15199586\Cork\6 Dwg\Graphics\61 AutoCad\Tranches\DP-04-23-DWG-RO-TTA-18939.dwg

© Irish Rail (2022). This drawing is confidential and the copyright in it is owned by Irish Rail. This drawing must not be either loaned, copied or otherwise reproduced in whole or in part or used for any purpose without the prior permission of Irish Rail.
 © Ordnance Survey Ireland and government of Ireland. All O.S. Data used for plans are printed under: "Copyright Ordnance Survey Ireland" Survey No. 0039722. (OSi Aerial Data or OSi Lidar Data) & Survey No. 2022/OSi_NMA_180 (OSi Vector Data).
 All elevations are in metres and relate to OSi Geoid Model (OSGM02) Mean Head as defined by existing Project Control. All Co-ordinates are in Irish Transverse Mercator Grid (ITM) as defined by OSi active GPS station Tallaght College (TLLG).



Rev	Date	Drn	Chk'd	App'd	Description
v01	10.11.22	AOS	GOH	RM	PLANNING ISSUE

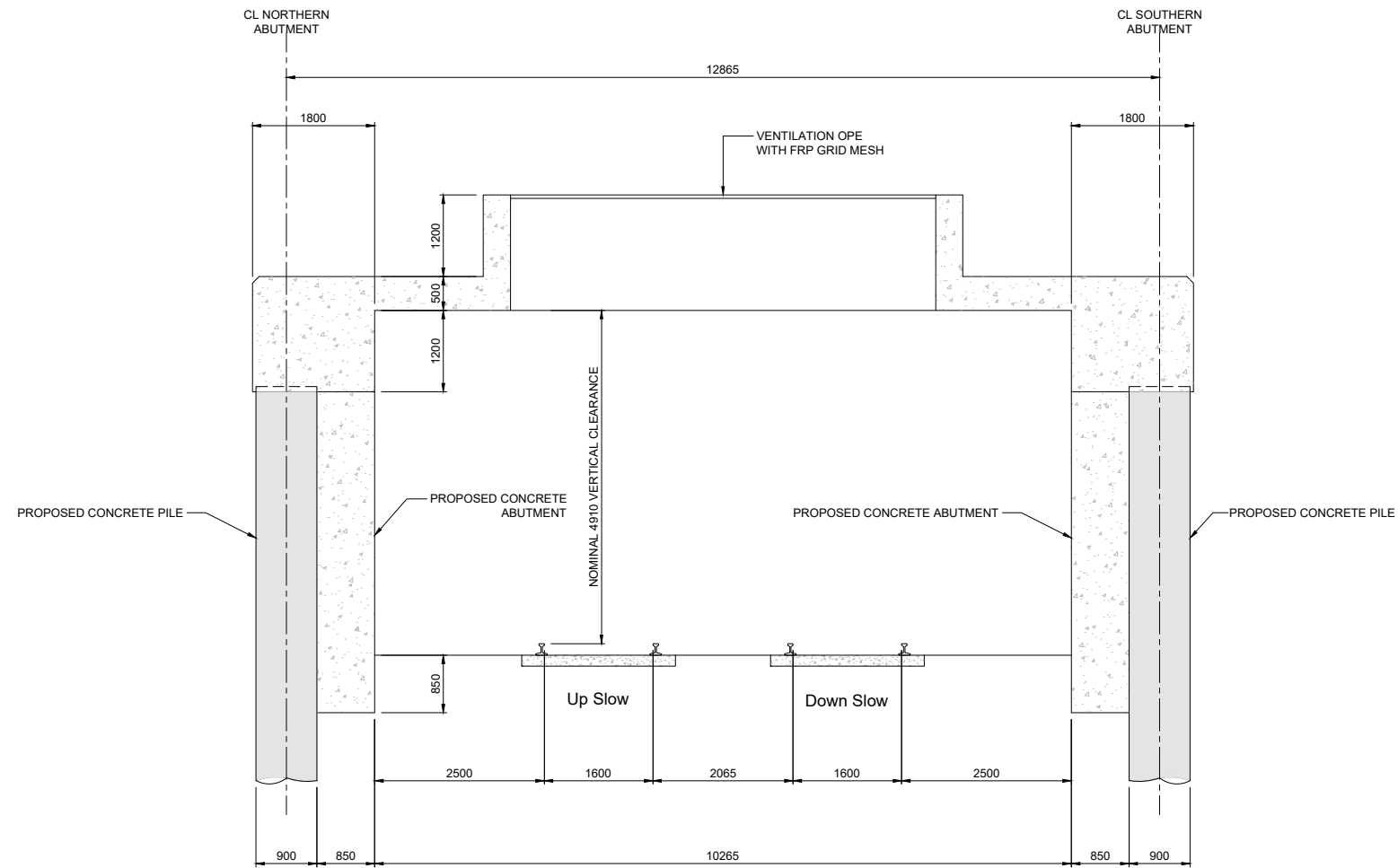
Client Iarnród Éireann Irish Rail		Engineering Designer ATKINS TYPSPA Member of the SNC Lavalin Group	
Date 15.10.21	Scale 1:50 @ A1 1:100 @ A3	Drawn AOS	Checked GOH
Project Code 5199586	Issuer TTA	Approved RM	QMS Code

Project Title DART + SOUTH WEST	
Drawing Title SOUTH CIRCULAR ROAD BRIDGE (OBC1) BRIDGE DECK CROSS SECTION TYPE 1	
Drawing File Name DP-04-23-DWG-RO-TTA-18939	Version v01
Status S3	

DO NOT SCALE USE FIGURED DIMENSIONS ONLY

DRAWING NOTES:

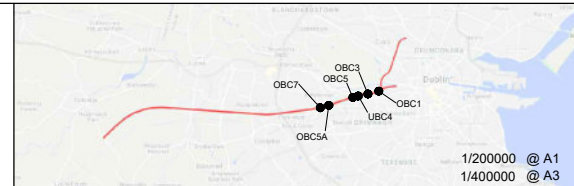
1. All dimensions are in millimetres unless noted otherwise
2. All levels are in metres relative to National Ordnance Datum unless noted otherwise
3. Chainages are expressed in metres
4. All angles are in degrees (0°-360°) unless noted otherwise
5. Dimensions are not to be scaled from the drawings



C
18937 CROSS SECTION

V:\15199586\Cork\6 Dwg\Graphics\61 AutoCad\Tranches\DP-04-23-DWG-RO-TTA-18940.dwg

© Irish Rail (2022). This drawing is confidential and the copyright in it is owned by Irish Rail. This drawing must not be either loaned, copied or otherwise reproduced in whole or in part or used for any purpose without the prior permission of Irish Rail.
 © Ordnance Survey Ireland and government of Ireland. All O.S. Data used for plans are printed under: "Copyright Ordnance Survey Ireland" Survey No. 0039722. (OSi Aerial Data or OSi Lidar Data) & Survey No. 2022/OSi_NMA_180 (OSi Vector Data).
 All elevations are in metres and relate to OSi Geoid Model (OSGM02) Mean Head as defined by existing Project Control. All Co-ordinates are in Irish Transverse Mercator Grid (ITM) as defined by OSi active GPS station Tallaght College (TLLG).



Rev	Date	Drn	Chk'd	App'd	Description
v01	10.11.22	AOS	GOH	RM	PLANNING ISSUE

Client: **Iarnród Éireann Irish Rail**

Date: 15.10.21
 Scale: 1:50 @ A1, 1:100 @ A3
 Project Code: 5199586
 Issuer: TTA

Engineering Designer: **ATKINS** (Member of the SNC Lavalin Group)
 Supported by: **rps**

Drawn: AOS, Checked: GOH, Approved: RM

QMS Code:

Project Title: **DART + SOUTH WEST**

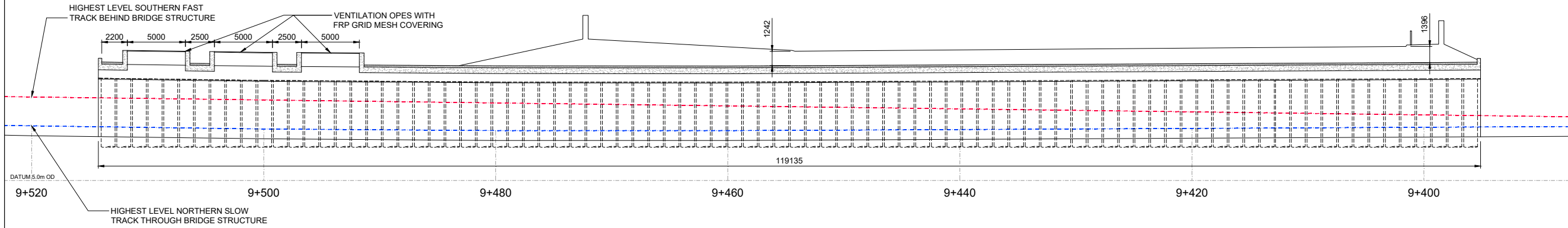
Drawing Title: **SOUTH CIRCULAR ROAD BRIDGE (OBC1) BRIDGE DECK CROSS SECTION TYPE 2**

Drawing File Name: DP-04-23-DWG-RO-TTA-18940
 Version: v01
 Status: S3

DO NOT SCALE USE FIGURED DIMENSIONS ONLY

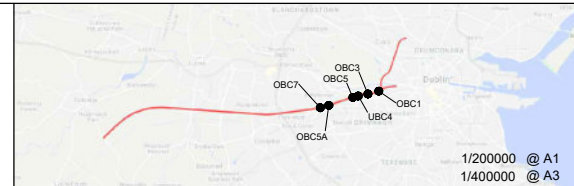
DRAWING NOTES:

1. All dimensions are in millimetres unless noted otherwise
2. All levels are in metres relative to National Ordnance Datum unless noted otherwise
3. Chainages are expressed in metres
4. All angles are in degrees (0°-360°) unless noted otherwise
5. Dimensions are not to be scaled from the drawings



A
18937 **LONGITUDINAL SECTION**

© Irish Rail (2022). This drawing is confidential and the copyright in it is owned by Irish Rail. This drawing must not be either loaned, copied or otherwise reproduced in whole or in part or used for any purpose without the prior permission of Irish Rail.
 © Ordnance Survey Ireland and government of Ireland. All O.S. Data used for plans are printed under: "Copyright Ordnance Survey Ireland" Survey No. 0039722. (OSi Aerial Data or OSi Lidar Data) & Survey No. 2022/OSi_NMA_180 (OSi Vector Data).
 All elevations are in metres and relate to OSi Geoid Model (OSGM02) Mean Head as defined by existing Project Control. All Co-ordinates are in Irish Transverse Mercator Grid (ITM) as defined by OSi active GPS station Tallaght College (TLLG).

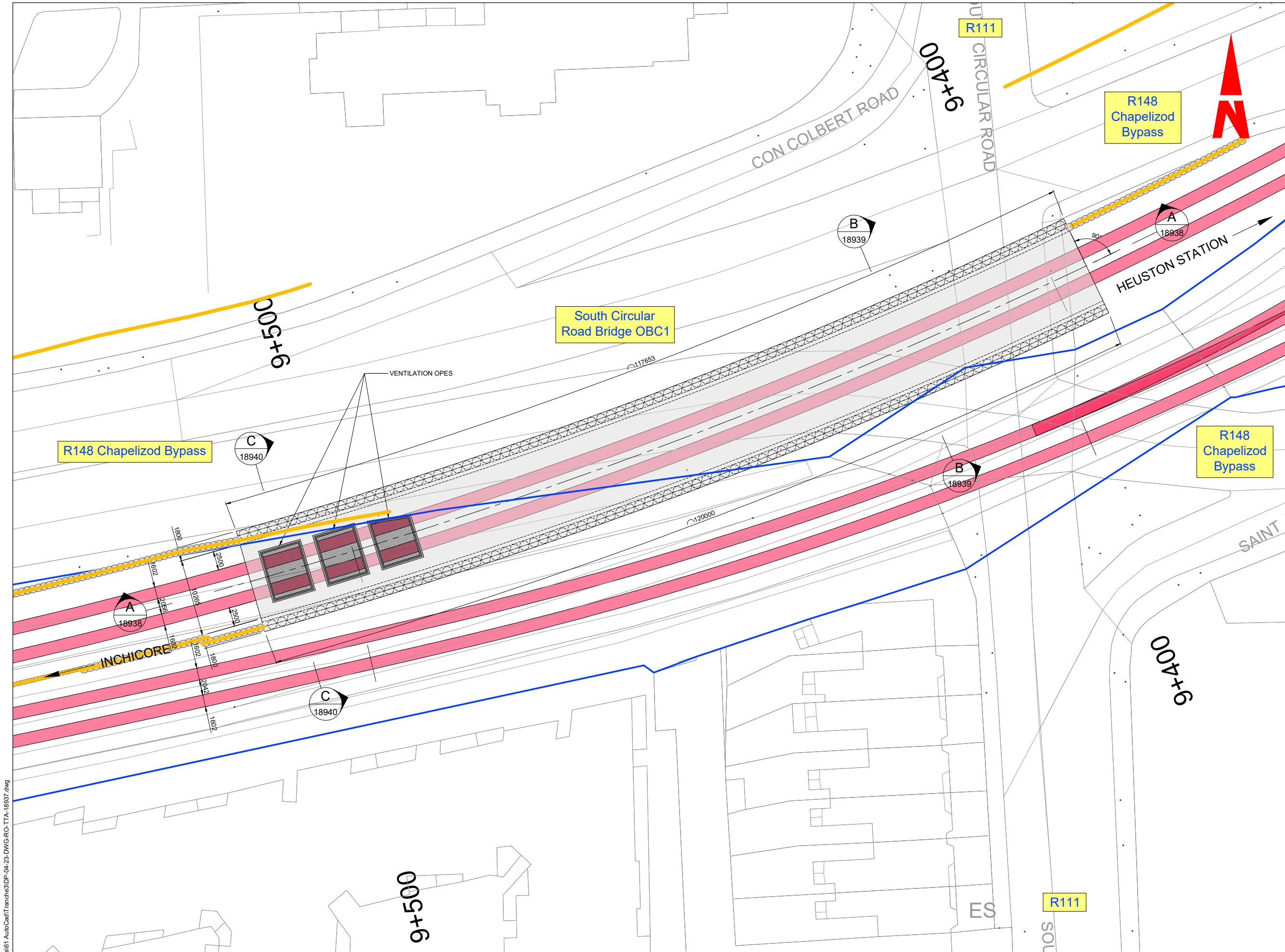


Rev	Date	Drn	Chk'd	App'd	Description
v01	10.11.22	AOS	GOH	RM	PLANNING ISSUE

Client Iarnród Éireann Irish Rail		Engineering Designer ATKINS Supported by TPSPA Member of the SNC Lavalin Group	
Date 15.10.21	Scale 1:200 @ A1 1:400 @ A3	Drawn AOS	Checked GOH
Project Code 5199586	Issuer TTA	Approved RM	QMS Code

Project Title DART + SOUTH WEST	
Drawing Title SOUTH CIRCULAR ROAD BRIDGE (OBC1) BRIDGE DECK LONGITUDINAL SECTION	
Drawing File Name DP-04-23-DWG-RO-TTA-18938	Version v01
Status S3	

DO NOT SCALE USE FIGURED DIMENSIONS ONLY



- DRAWING NOTES:**
- All dimensions are in millimetres unless noted otherwise
 - All levels are in metres relative to National Ordnance Datum unless noted otherwise
 - Chainages are expressed in metres
 - All angles are in degrees (0°-360°) unless noted otherwise
 - Dimensions are not to be scaled from the drawings

LEGEND:

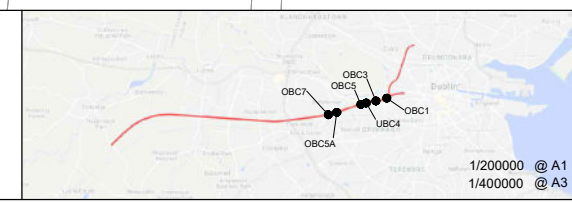
— CIÉ Land Ownership

V:\15199586 Cork\6 Dwg\Graphics\61 AutoCad\Tranches\DP-04-23-DWG-RO-TTA-18937.dwg

© Irish Rail (2022). This drawing is confidential and the copyright in it is owned by Irish Rail. This drawing must not be either loaned, copied or otherwise reproduced in whole or in part or used for any purpose without the prior permission of Irish Rail.

© Ordnance Survey Ireland and government of Ireland. All O.S. Data used for plans are printed under: "Copyright Ordnance Survey Ireland" Survey No. 0039722. (OSi Aerial Data or OSi Lidar Data) & Survey No. 2022/OSi_NMA_180 (OSi Vector Data).

All elevations are in metres and relate to OSi Geoid Model (OSGM02) Mean Head as defined by existing Project Control. All Co-ordinates are in Irish Transverse Mercator Grid (ITM) as defined by OSi active GPS station Tallaght College (TLLG).



Rev	Date	Drm	Chk'd	App'd	Description
v01	10.11.22	AOS	GOH	RM	PLANNING ISSUE

Client: **Iarnród Éireann Irish Rail**

Engineering Designer: **ATKINS** (TYPSPA Member of the SNC Lavalin Group)

Supported by: **rps**

Date: 15.10.21 | Scale: 1:250 @ A1, 1:500 @ A3

Project Code: 5199586 | Issuer: TTA

Drawn: AOS | Checked: GOH | Approved: RM

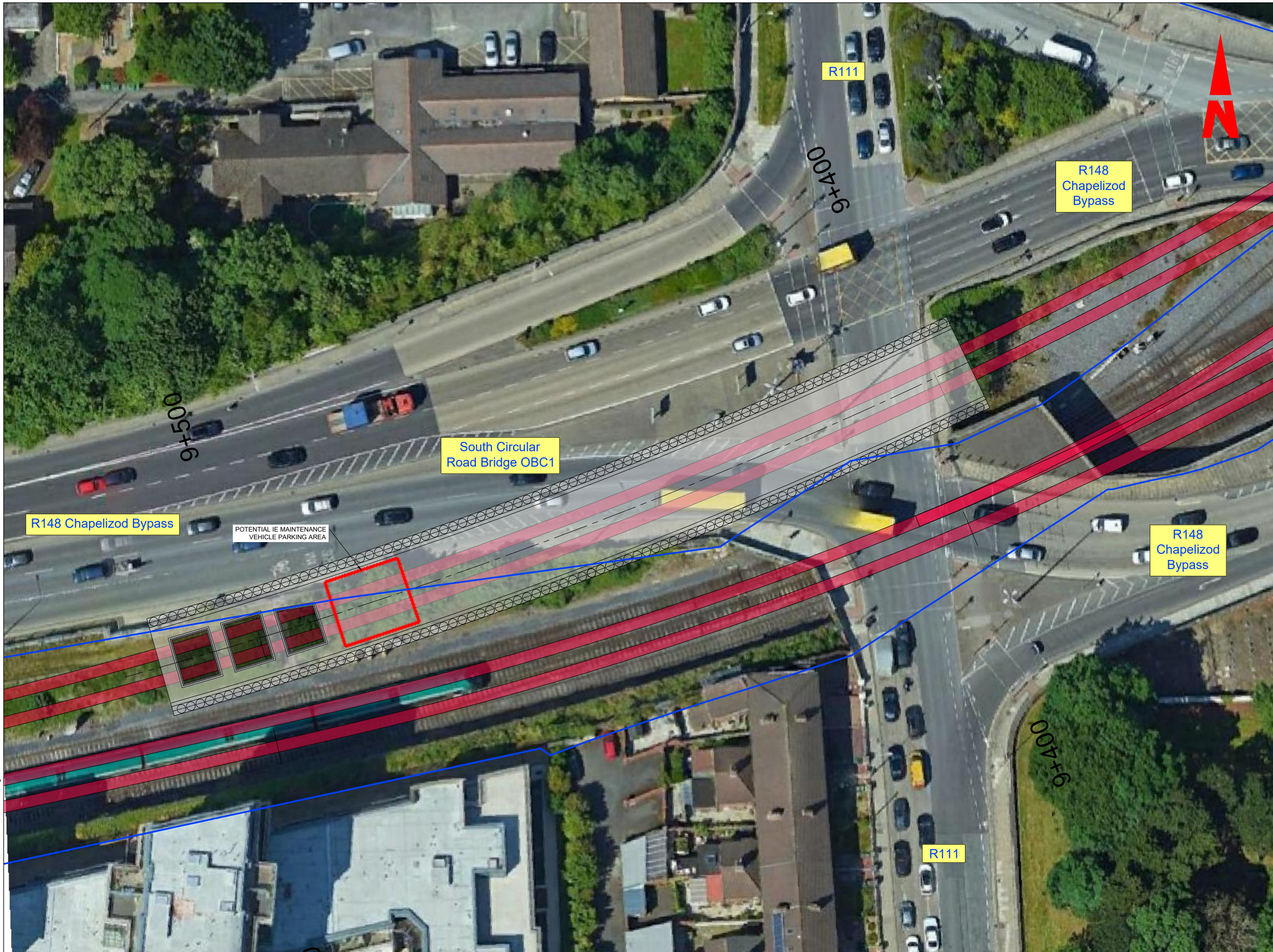
QMS Code: _____

Project Title: **DART + SOUTH WEST**

Drawing Title: **SOUTH CIRCULAR ROAD OVERBRIDGE (OBC1) BRIDGE DECK PLAN**

Drawing File Name: DP-04-23-DWG-RO-TTA-18937 | Version: v01 | Status: S3

DO NOT SCALE USE FIGURED DIMENSIONS ONLY



DRAWING NOTES:

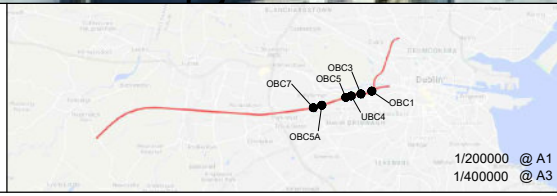
1. All dimensions are in millimetres unless noted otherwise
2. All levels are in metres relative to National Ordnance Datum unless noted otherwise
3. Chainages are expressed in metres
4. All angles are in degrees (0°-360°) unless noted otherwise
5. Dimensions are not to be scaled from the drawings
6. H4A vehicle restraints system layout to be agreed in liaison with Irish Rail.

LEGEND:

- CIÉ Land Ownership
- ▨ Gabion Wall
- ▨ King Post Wall
- ▨ King Post Wall

V:\51989586_Cork\6 Dwggs-Graphics\61 AutoCad\Tranche3\DP-04-23-DWG-RO-TTA-18936.dwg

© Irish Rail (2022). This drawing is confidential and the copyright in it is owned by Irish Rail. This drawing must not be either loaned, copied or otherwise reproduced in whole or in part or used for any purpose without the prior permission of Irish Rail.
 © Ordnance Survey Ireland and government of Ireland. All O.S. Data used for plans are printed under: "Copyright Ordnance Survey Ireland" Survey No. 0039722. (OSI Aerial Data or OSI Lidar Data) & Survey No. 2022/OSI_NMA_180 (OSI Vector Data).
 All elevations are in metres and relate to OSI Geoid Model (OSGM02) Mean Head as defined by existing Project Control. All Co-ordinates are in Irish Transverse Mercator Grid (ITM) as defined by OSI active GPS station Tallaght College (TLLG).

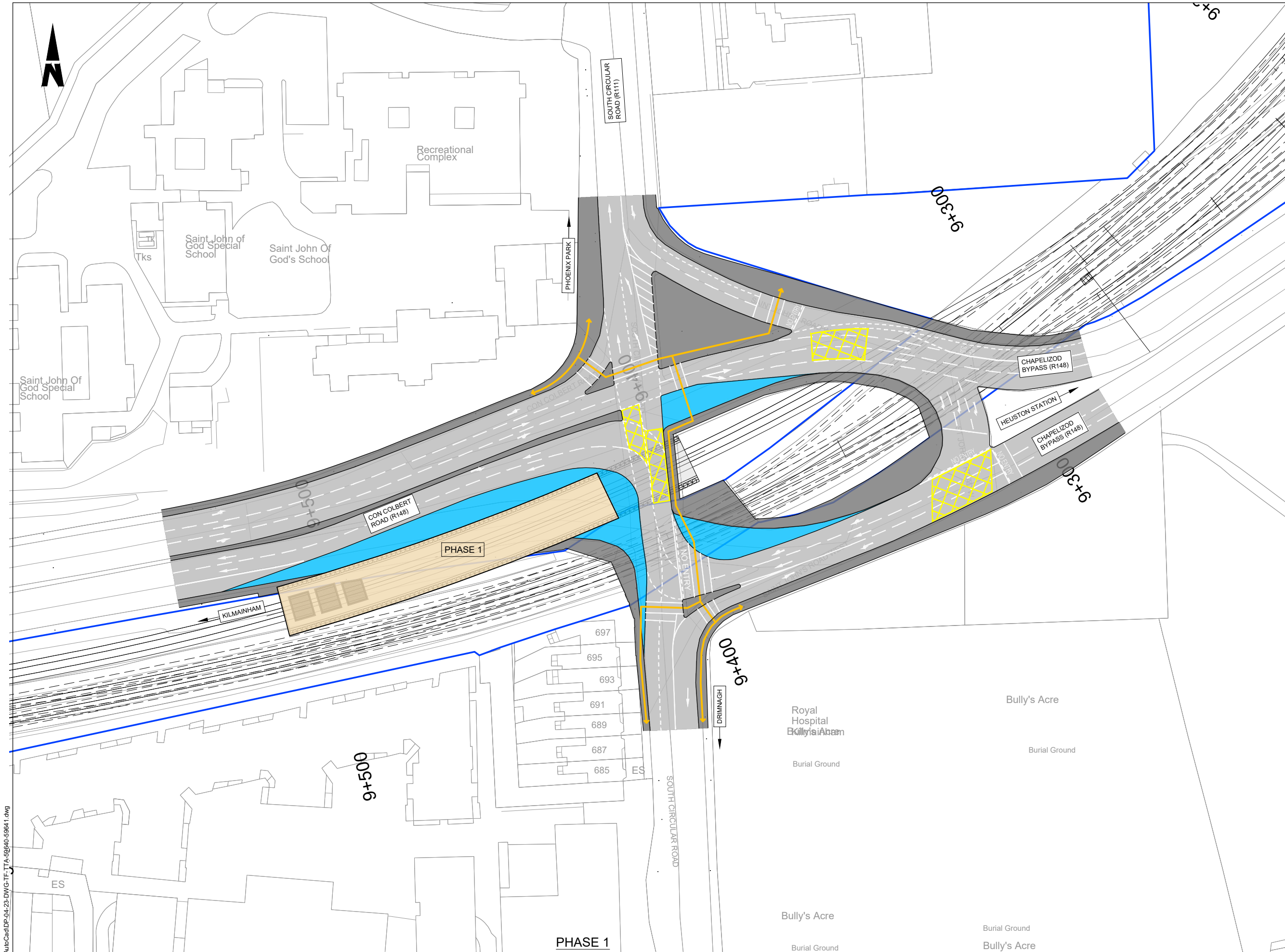


Rev	Date	Drn	Chk'd	App'd	Description
v01	10.11.22	AOS	GOH	RM	PLANNING ISSUE

Client Iarnród Éireann Irish Rail		Engineering Designer ATKINS Supported by rps	
Date 15.10.21	Scale 1:200 @ A1 1:400 @ A3	Drawn AOS	Checked GOH
Project Code 5199586	Issuer TTA	Approved RM	QMS Code

Project Title DART + SOUTH WEST	
Drawing Title SOUTH CIRCULAR ROAD BRIDGE (OBC1) GENERAL ARRANGEMENT	
Drawing File Name DP-04-23-DWG-RO-TTA-18936	Version v01
Status S3	

DO NOT SCALE USE FIGURED DIMENSIONS ONLY



NOTE: INFORMATION IS PRESENTED FOR PUBLIC CONSULTATION NO. 2.

- NOT ALL DESIGN DETAIL OR CONSTRUCTION RELATED DETAILS ARE KNOWN AT THIS TIME.
- POTENTIAL INTERFERENCE WITH PROPERTY RIGHTS IS BASED ON THE LEVEL OF INFORMATION AND DESIGN AVAILABLE AT THIS TIME. FURTHER WORK INCLUDING DETAILED DESIGN AND TECHNICAL AND CONSTRUCTION RELATED SOLUTIONS WILL SEEK TO MINIMISE POTENTIAL INTERFERENCE WITH PROPERTY RIGHTS.

LEGEND:

- EXISTING CIÉ PROPERTY OWNERSHIP BOUNDARY
- CONSTRUCTION PHASES
- BUILDOUTS
- CARRIAGEWAY
- EXISTING FOOT PATH / TRAFFIC ISLAND RETAINED
- PEDESTRIAN AND CYCLE FACILITIES

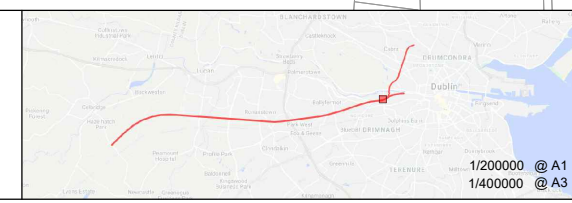
NOTES:

1. ALL DIMENSIONS ARE IN MILLIMETERS UNLESS NOTED OTHERWISE.
2. ALL LEVELS ARE IN METRES RELATIVE TO NATIONAL ORDNANCE DATUM UNLESS NOTED OTHERWISE.
3. CHAINAGES ARE EXPRESSED IN METERS.
4. ALL ANGLES ARE IN DEGREES (0°-360°) UNLESS NOTED OTHERWISE.
5. DIMENSIONS ARE NOT TO BE SCALED FROM THE DRAWING.

U:\15 19958616 Dwg\Graphics\61 AutoCad\DP-04-23-DWG-TF-TTA-59640-59641.dwg

© Irish Rail (2022). This drawing is confidential and the copyright in it is owned by Irish Rail. This drawing must not be either loaned, copied or otherwise reproduced in whole or in part or used for any purpose without the prior permission of Irish Rail.

© Ordnance Survey Ireland and government of Ireland. All O.S. Data used for plans are printed under: "Copyright Ordnance Survey Ireland" Survey No. 0039722. (OSi Aerial Data or OSi Lidar Data) & Survey No. 2022/OSi_NMA_180 (OSi Vector Data). All elevations are in metres and relate to OSi Geoid Model (OSGM02) Mean Head as defined by existing Project Control. All Co-ordinates are in Irish Transverse Mercator Grid (ITM) as defined by OSi active GPS station Tallaght College (TLLG).



Rev	Date	Drn	Chk'd	App'd	Description
v01	10.11.22	RG	JX	DM	PLANNING ISSUE

Client: **Iarnród Éireann Irish Rail**

Engineering Designer: **ATKINS** (TYPSA Member of the SNC Lavalin Group)

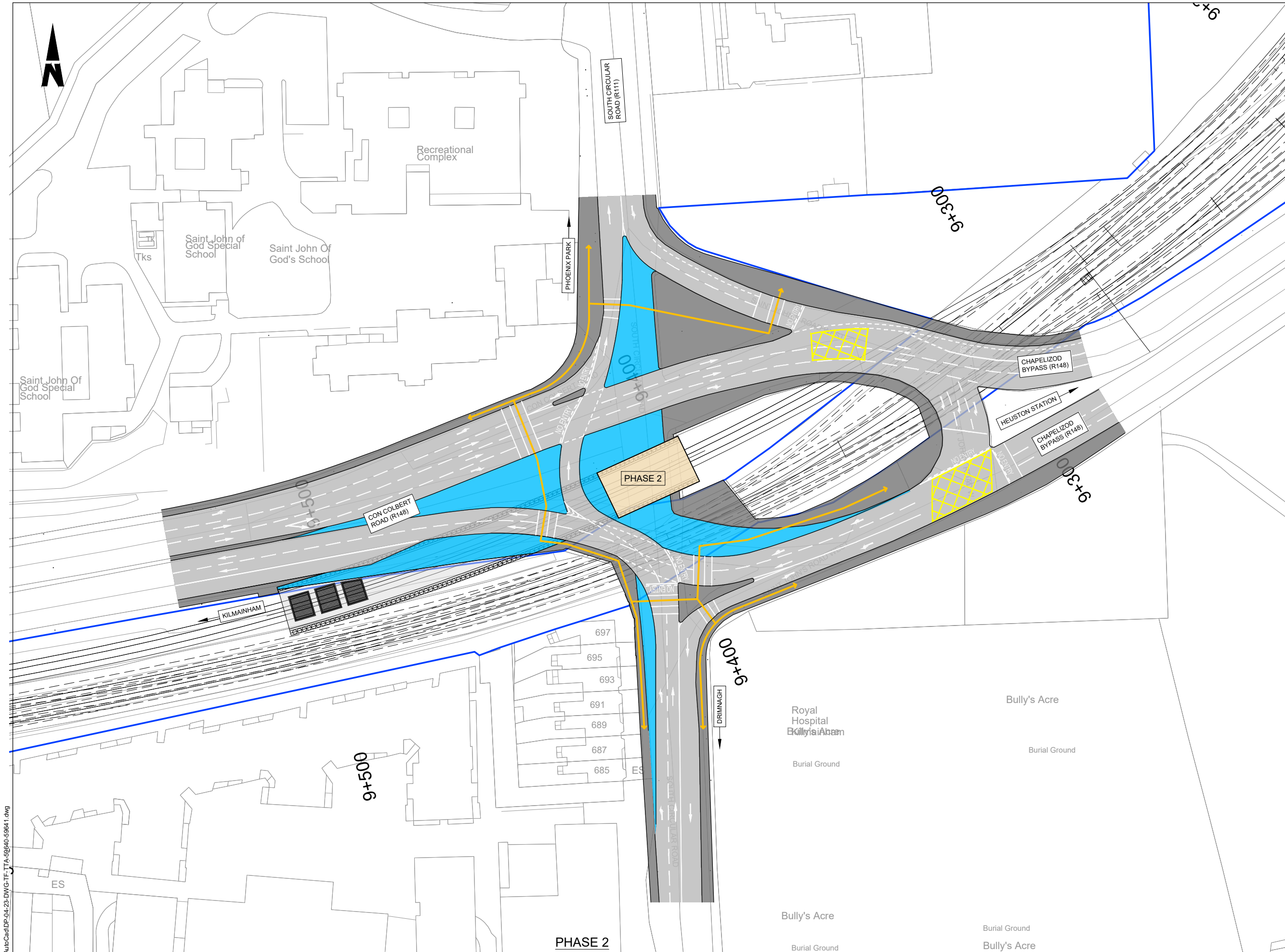
Supported by: **rps**

Date: 22.12.21 | Scale: 1:500 @ A1, 1:1000 @ A3 | Drawn: JX | Checked: JX | Approved: JAP

Project Code: 5199586 | Issuer: TTA | QMS Code: []

Project Title: DART + SOUTH WEST	
Drawing Title: SOUTH CIRCULAR ROAD BRIDGE (OBC1A) TEMPORARY TRAFFIC MANAGEMENT PHASE 1	
Drawing File Name: DP-04-23-DWG-TF-TTA-59640	Version: v01 Status: S3

DO NOT SCALE USE FIGURED DIMENSIONS ONLY



NOTE: INFORMATION IS PRESENTED FOR PUBLIC CONSULTATION NO. 2.

- NOT ALL DESIGN DETAIL OR CONSTRUCTION RELATED DETAILS ARE KNOWN AT THIS TIME.
- POTENTIAL INTERFERENCE WITH PROPERTY RIGHTS IS BASED ON THE LEVEL OF INFORMATION AND DESIGN AVAILABLE AT THIS TIME. FURTHER WORK INCLUDING DETAILED DESIGN AND TECHNICAL AND CONSTRUCTION RELATED SOLUTIONS WILL SEEK TO MINIMISE POTENTIAL INTERFERENCE WITH PROPERTY RIGHTS.

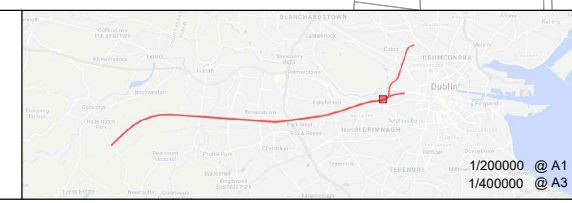
LEGEND:

- EXISTING CIÉ PROPERTY OWNERSHIP BOUNDARY
- CONSTRUCTION PHASES
- BUILDOUTS
- CARRIAGEWAY
- EXISTING FOOT PATH / TRAFFIC ISLAND RETAINED
- PEDESTRIAN AND CYCLE FACILITIES

NOTES:

1. ALL DIMENSIONS ARE IN MILLIMETERS UNLESS NOTED OTHERWISE.
2. ALL LEVELS ARE IN METRES RELATIVE TO NATIONAL ORDINANCE DATUM UNLESS NOTED OTHERWISE.
3. CHAINAGES ARE EXPRESSED IN METERS.
4. ALL ANGLES ARE IN DEGREES (0°-360°) UNLESS NOTED OTHERWISE.
5. DIMENSIONS ARE NOT TO BE SCALED FROM THE DRAWING.

© Irish Rail (2022). This drawing is confidential and the copyright in it is owned by Irish Rail. This drawing must not be either loaned, copied or otherwise reproduced in whole or in part or used for any purpose without the prior permission of Irish Rail.
 © Ordnance Survey Ireland and government of Ireland. All O.S. Data used for plans are printed under: "Copyright Ordnance Survey Ireland" Survey No. 0039722. (OSI Aerial Data or OSI Lidar Data) & Survey No. 2022/OSI_NMA_180 (OSI Vector Data).
 All elevations are in metres and relate to OSI Geoid Model (OSGM02) Mean Head as defined by existing Project Control. All Co-ordinates are in Irish Transverse Mercator Grid (ITM) as defined by OSI active GPS station Tallaght College (TLLG).



Rev	Date	Drn	Chk'd	App'd	Description
v01	10.11.22	RG	JX	DM	PLANNING ISSUE

Date	Scale	Drawn	Checked	Approved	
22.12.21	1:500 @ A1 1:1000 @ A3	JX	JX	JAP	
Project Code	Issuer	QMS Code			
5199586	TTA				

DART + SOUTH WEST	
Drawing Title	SOUTH CIRCULAR ROAD BRIDGE (OBC1A) TEMPORARY TRAFFIC MANAGEMENT PHASE 2
Drawing File Name	DP-04-23-DWG-TF-TTA-59641
Version	v01
Status	S3

DO NOT SCALE USE FIGURED DIMENSIONS ONLY