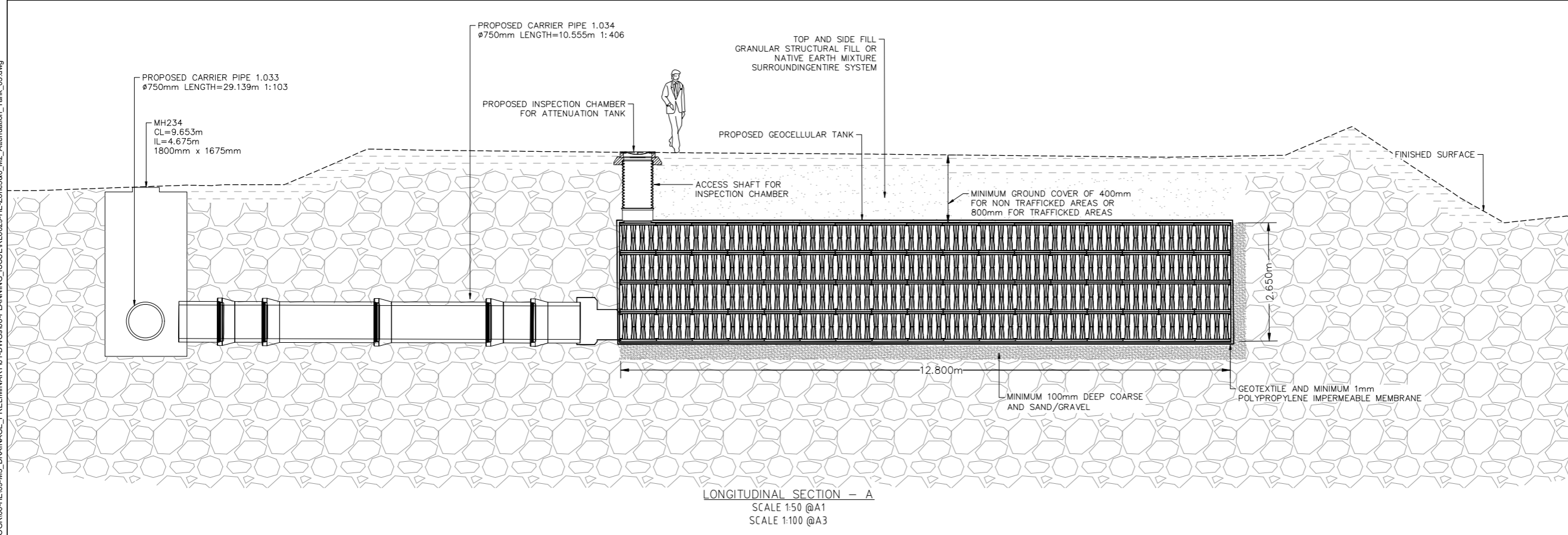
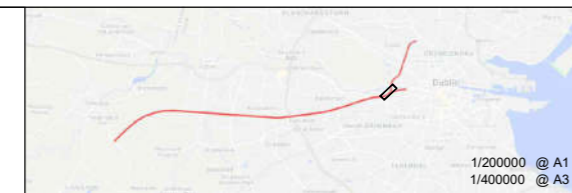


- LEGEND:**
- PROPOSED CARRIER PIPE
  - PROPOSED CIRCULAR MANHOLE
  - PROPOSED RECTANGULAR MANHOLE
  - PROPOSED TANK INSPECTION CHAMBER
  - PROPOSED ATTENUATION TANK
- NOTES:**
1. DESIGN IS BASED ON TOPOGRAPHICAL SURVEY QT-94577-DART-SOUTHWEST SECTION\_01 TO 10 (DWG FORMAT) IN ITM COORDINATES.
  2. ALL DIMENSIONS ARE IN MILLIMETERS UNLESS STATED OTHERWISE.
  3. ALL LEVELS ARE IN METERS TO NATIONAL ORDNANCE DATUM UNLESS NOTED OTHERWISE.
  4. DIMENSIONS ARE NOT TO BE SCALED FROM THE DRAWING.
  5. PROPOSED DISCHARGE RATES AND OUTFALL LOCATIONS ARE SUBJECT TO DUBLIN CITY COUNCIL APPROVAL.



V:\projects\RL629\3-WIPR\3-1-NDGR06-HE09-M3\_DRAINAGE\_PRELIMINARY\01-DWG\08-PLANNING\_ISSUE\RL629-HE-Zones\86-M2\_Attenuation\_Tank\_03.dwg

© Irish Rail (2022). This drawing is confidential and the copyright in it is owned by Irish Rail. This drawing must not be either loaned, copied or otherwise reproduced in whole or in part or used for any purpose without the prior permission of Irish Rail.  
 © Ordnance Survey Ireland and government of Ireland. All O.S. Data used for plans are printed under: "Copyright Ordnance Survey Ireland" Survey No. 0039722. (OSI Aerial Data or OSI Lidar Data) & Survey No. 2022/OSI\_NMA\_189 (OSI Vector Data).  
 All elevations are in metres and relate to OSI Geoid Model (OSGM02) Malin Head as defined by existing Project Control.  
 All Co-ordinates are in Irish Transverse Mercator Grid (ITM) as defined by OSI active GPS station Tallaght College (TLLG).



Rev	Date	Drn	Chk'd	App'd	Description
v01	23/11/2022	MA	AB	JP	PLANNING ISSUE

**Client**

**Engineering Designer**  
  
 Supported by:

**Date** 23/11/2022  
**Scale** AS SHOWN @A1 @A3  
**Project Code** 5199586  
**Issuer** TTA

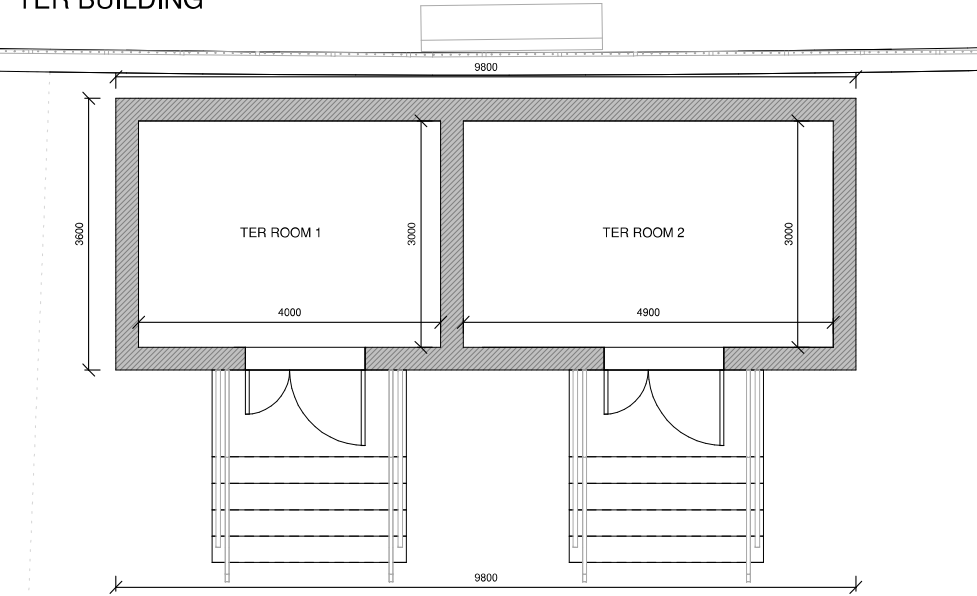
**Drawn** MA  
**Checked** AB  
**Approved** JP

**QMS Code**

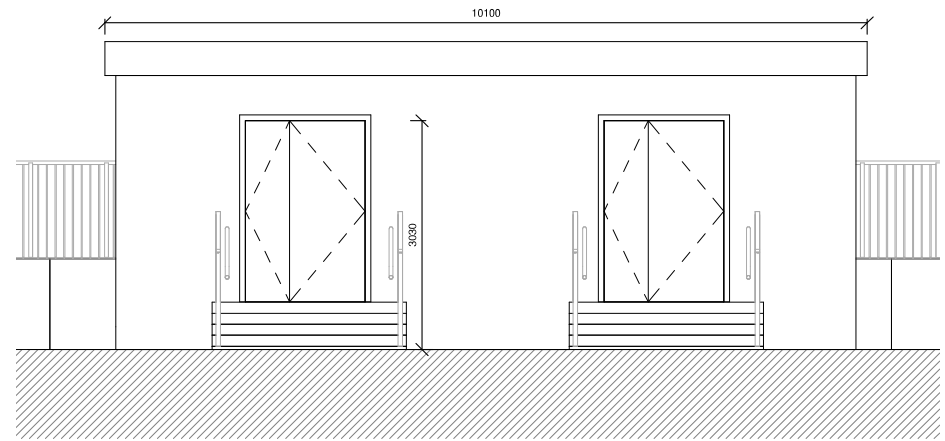
<b>Project Title</b>	DART + SOUTH WEST		
<b>Drawing Title</b>	ATTENUATION TANK FOR DRAINAGE NETWORK 3		
<b>Drawing File Name</b>	DP-04-23-DWG-RO-TTA-18868	<b>Version</b>	v01
<b>Status</b>	S3		

DO NOT SCALE USE FIGURED DIMENSIONS ONLY

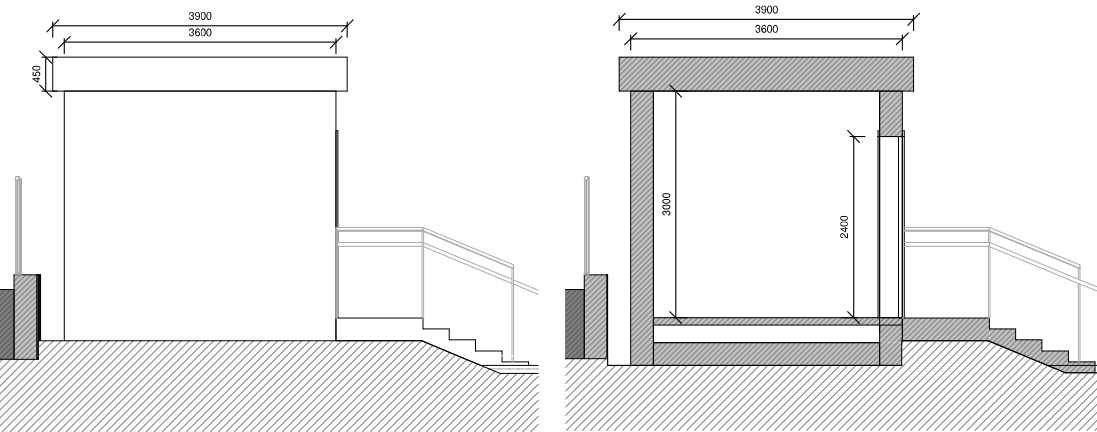
TER BUILDING



1 TER BUILDING FLOORPLAN  
1: 50



2 TER BUILDING FRONT ELEVATION  
1: 50



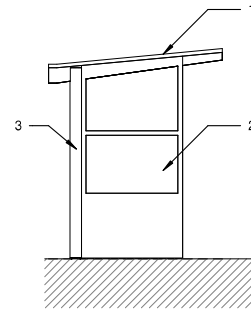
3 TER BUILDING SIDE ELEVATION  
1: 50

4 TER BUILDING SECTION  
1: 50

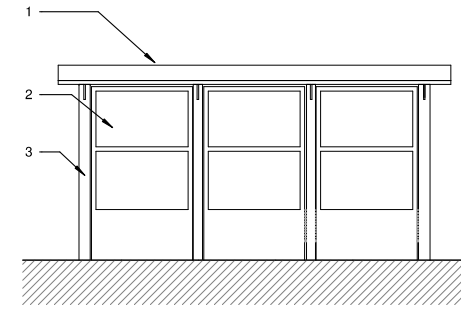
TER Building dimensions are indicative.  
TER building construction will include:  
Support and compartmentation walls with insulated cavity and external blockwork finish  
Insulated floor slab and raised access floor  
Ventilation opening and grilles  
Insulation and waterproofing membrane finish on roof, with gutter and rainwater collection  
Ladder access to roof, fall arrest system as required by maintenance and safety strategy

WAITING SHELTER UNIT

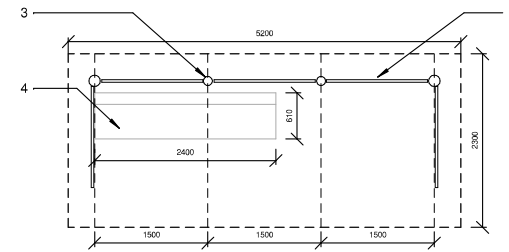
- 1: Pitched glazed roof
- 2: Safety glazing panels
- 3: Protected steel framework
- 4: Seat



5 WAITING SHELTER SECTION  
1: 50

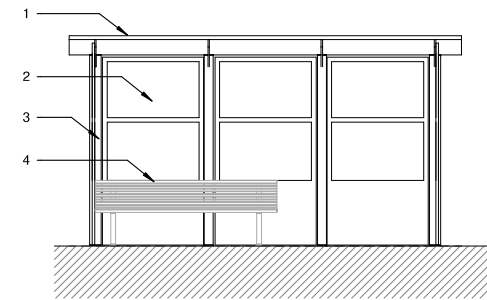


6 WAITING SHELTER BACK  
1: 50



7 WAITING SHELTER PLAN  
1: 50

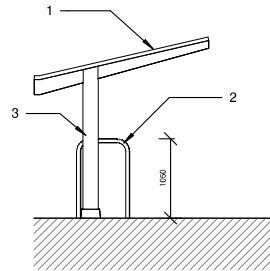
Dimensions are in meters.



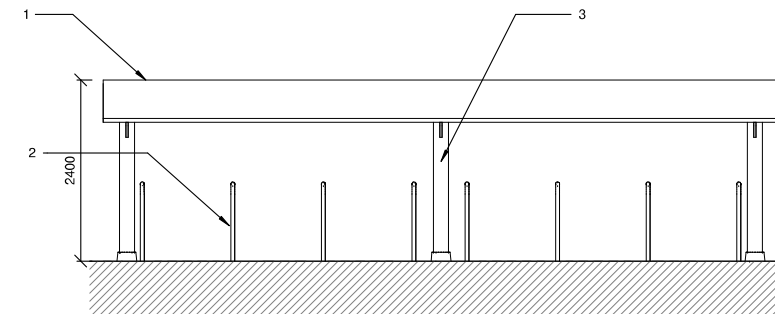
8 WAITING SHELTER FRONT  
1: 50

TYPICAL BICYCLE SHELTER UNIT

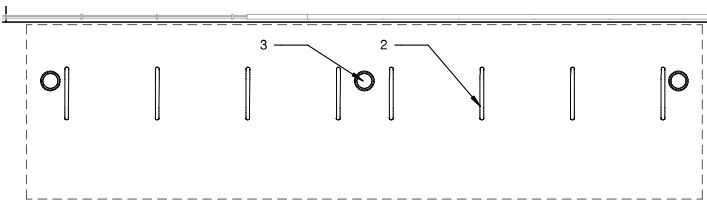
- 1: Pitched glazed roof
- 2: Stainless steel bicycle stand
- 3: Protected steel framework



9 BICYCLE SHELTER SECTION  
1: 50

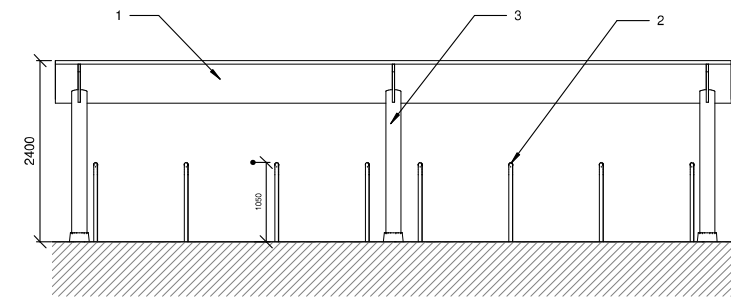


10 BICYCLE SHELTER BACK  
1: 50



11 BICYCLE SHELTER PLAN  
1: 50

Dimensions are in meters.



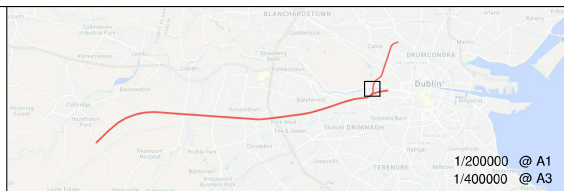
12 BICYCLE SHELTER FRONT  
1: 50

NOTES:

1. ALL DIMENSIONS ARE IN MILLIMETRES UNLESS NOTED OTHERWISE
2. ALL LEVELS ARE IN METRES RELATIVE TO NATIONAL ORDENANCE DATUM UNLESS NOTED OTHERWISE
3. CHANGES ARE EXPRESSED IN METRES UNLESS NOTED OTHERWISE
4. ALL ANGLES ARE IN DEGREES (0°360°) UNLESS NOTED OTHERWISE
5. DIMENSIONS ARE NOT TO BE SCALED FROM THE DRAWING

\\192.168.11.133\6629\3-WIPR\3-2-GRPH\XMLD\02-BE01\_MODELS

© Irish Rail (2022). This drawing is confidential and the copyright in it is owned by Irish Rail. This drawing must not be either loaned, copied or otherwise reproduced in whole or in part or used for any purpose without the prior permission of Irish Rail.  
© Ordnance Survey Ireland and government of Ireland. All O.S. Data used for plans are printed under: "Copyright Ordnance Survey Ireland" Survey No. 0039722. (OSi Aerial Data or OSi Lidar Data) & Survey No. 2022/OSI\_NIMA\_180 (OSi Vector Data).  
All elevations are in metres and relate to OSi Geoid Model (OSGM02) Malin Head as defined by existing Project Control.  
All Co-ordinates are in Irish Transverse Mercator Grid (ITM) as defined by OSi active GPS station Tallaght College (TLLG).



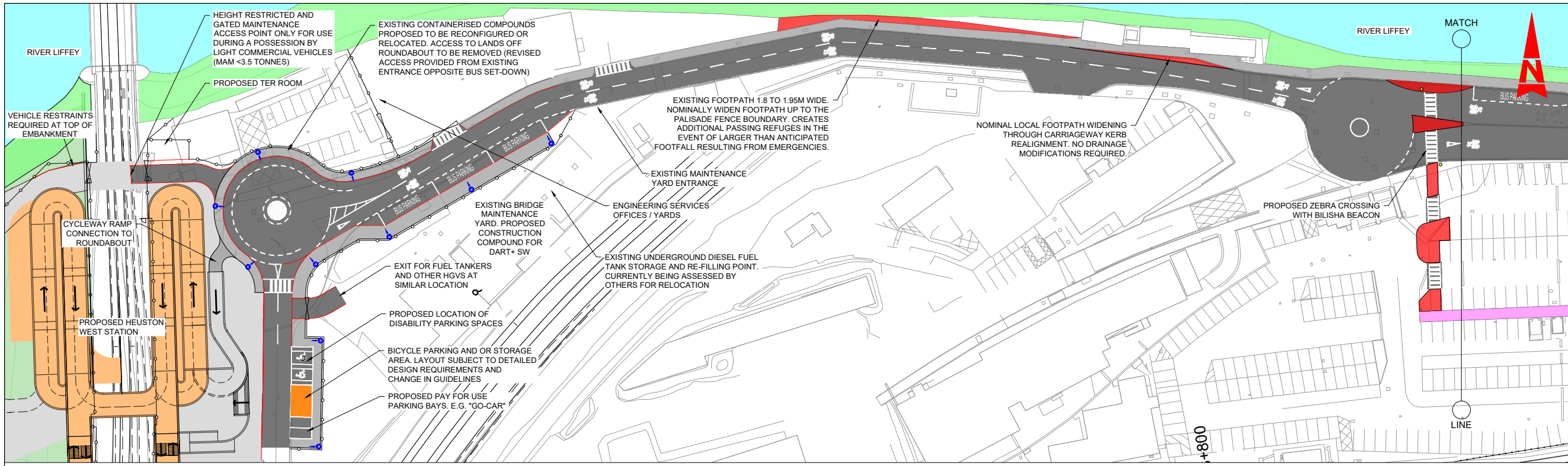
Rev	Date	Drn	Chk'd	App'd	Description
v01	23/11/2022	FGA	PCO	JPN	ISSUED FOR REVISION

Client <b>Irish Rail</b>		Engineering Designer <b>ATKINS</b>		Project Title <b>DART + SOUTH WEST</b>	
Date 23/11/2022	Scale AS SHOWN @ A3	Drawn FGA	Checked PCO	Approved JPN	Drawing Title <b>HEUSTON WEST STATION PRELIMINARY DESIGN ANCILLARY BUILDINGS SECTIONS AND ELEVATIONS</b>
Project Code 5199586	Issuer TTA	Supported by: <b>rps</b>		Drawing File Name DP-04-23-DWG-RO-TTA-18912	Version v01

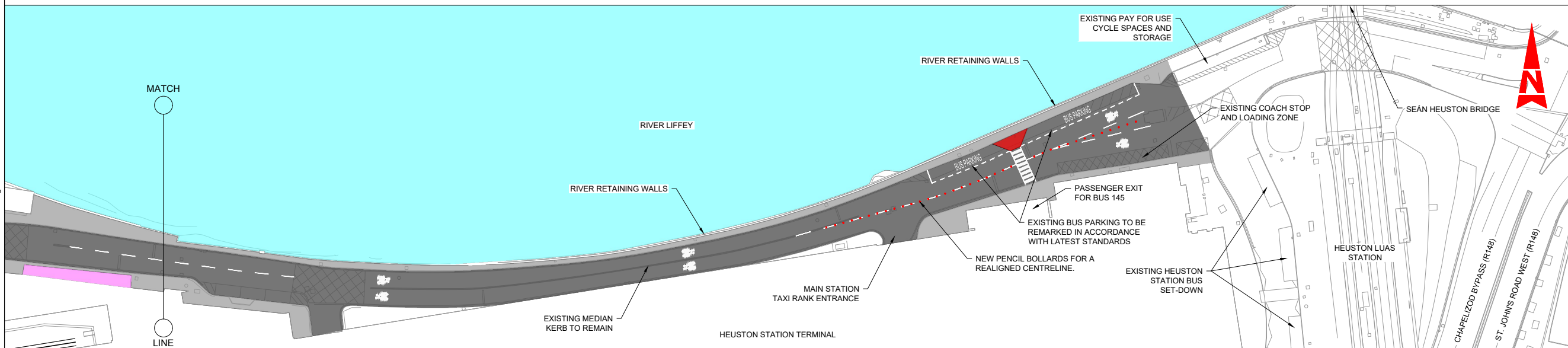
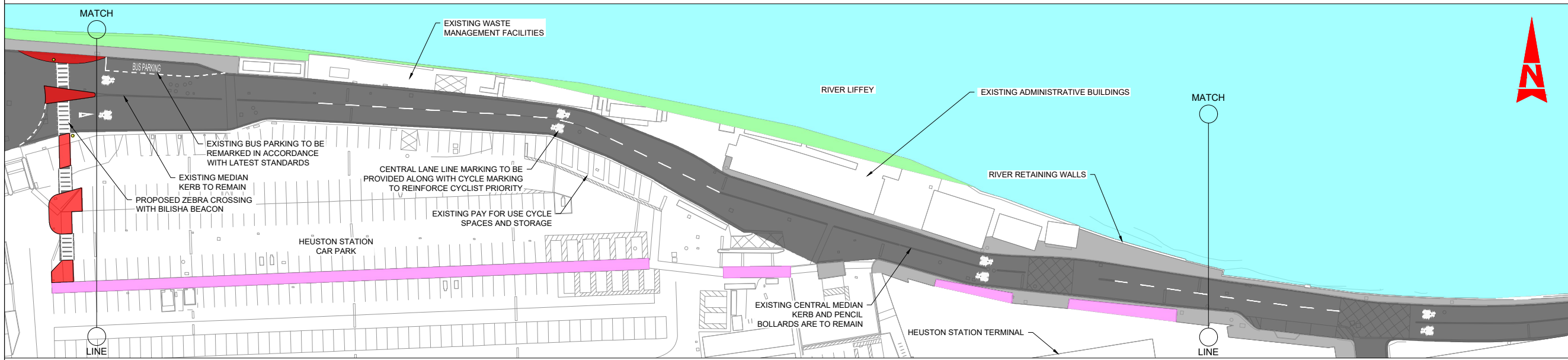
Client <b>Irish Rail</b>		Engineering Designer <b>ATKINS</b>		Project Title <b>DART + SOUTH WEST</b>	
Date 23/11/2022	Scale AS SHOWN @ A3	Drawn FGA	Checked PCO	Approved JPN	Drawing Title <b>HEUSTON WEST STATION PRELIMINARY DESIGN ANCILLARY BUILDINGS SECTIONS AND ELEVATIONS</b>
Project Code 5199586	Issuer TTA	Supported by: <b>rps</b>		Drawing File Name DP-04-23-DWG-RO-TTA-18912	Version v01

DO NOT SCALE USE FIGURED DIMENSIONS ONLY





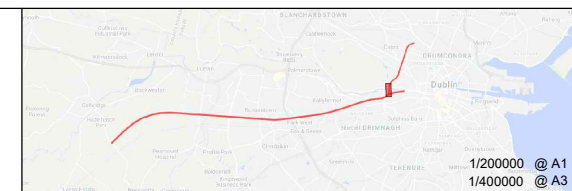
- LEGEND:**
- EXISTING FOOTPATH
  - EXISTING COVERED FOOTPATH
  - EXISTING ROAD
  - EXISTING RIVER
  - RIPARIAN ZONE
  - PROPOSED FOOTPATH
  - PROPOSED CYCLE PARKING AREA
  - PROPOSED ZEBRA CROSSING
  - PROPOSED FENCE
  - PROPOSED PENCIL BOLLARD
  - PROPOSED BELISHA BECON
  - PROPOSED LIGHTING COLUMN (POSITIONS TBC AT DETAIL DESIGN)
  - PROPOSED GATE



© Irish Rail (2022). This drawing is confidential and the copyright in it is owned by Irish Rail. This drawing must not be either loaned, copied or otherwise reproduced in whole or in part or used for any purpose without the prior permission of Irish Rail.

© Ordnance Survey Ireland and government of Ireland. All O.S. Data used for plans are printed under: "Copyright Ordnance Survey Ireland" Survey No. 0039722. (OSi Aerial Data or OSi Lidar Data) & Survey No. 2022/OSi\_NMA\_180 (OSi Vector Data).

All elevations are in metres and relate to OSi Geoid Model (OSGM02) Mean Head as defined by existing Project Control. All Co-ordinates are in Irish Transverse Mercator Grid (ITM) as defined by OSi active GPS station Tallaght College (TLLG).



Rev	Date	Drn	Chk'd	App'd	Description
v01	10.11.22	DB	JX	JAP	PLANNING ISSUE

Client: **Iarnród Éireann Irish Rail**

Engineering Designer: **ATKINS** (Member of the SNC Lavalin Group)

Supported by: **rps**

Date: 15.06.22 | Scale: 1:500 @ A1, 1:1000 @ A3

Project Code: 5199586 | Issuer: TTA

Drawn: DB | Checked: JX | Approved: JAP

QMS Code: \_\_\_\_\_

Project Title: **DART + SOUTH WEST**

Drawing Title: **HEUSTON WEST STATION BUS SET-DOWN, PEDESTRIAN TRANSFER ROUTE AND CYCLEWAY UPGRADES**

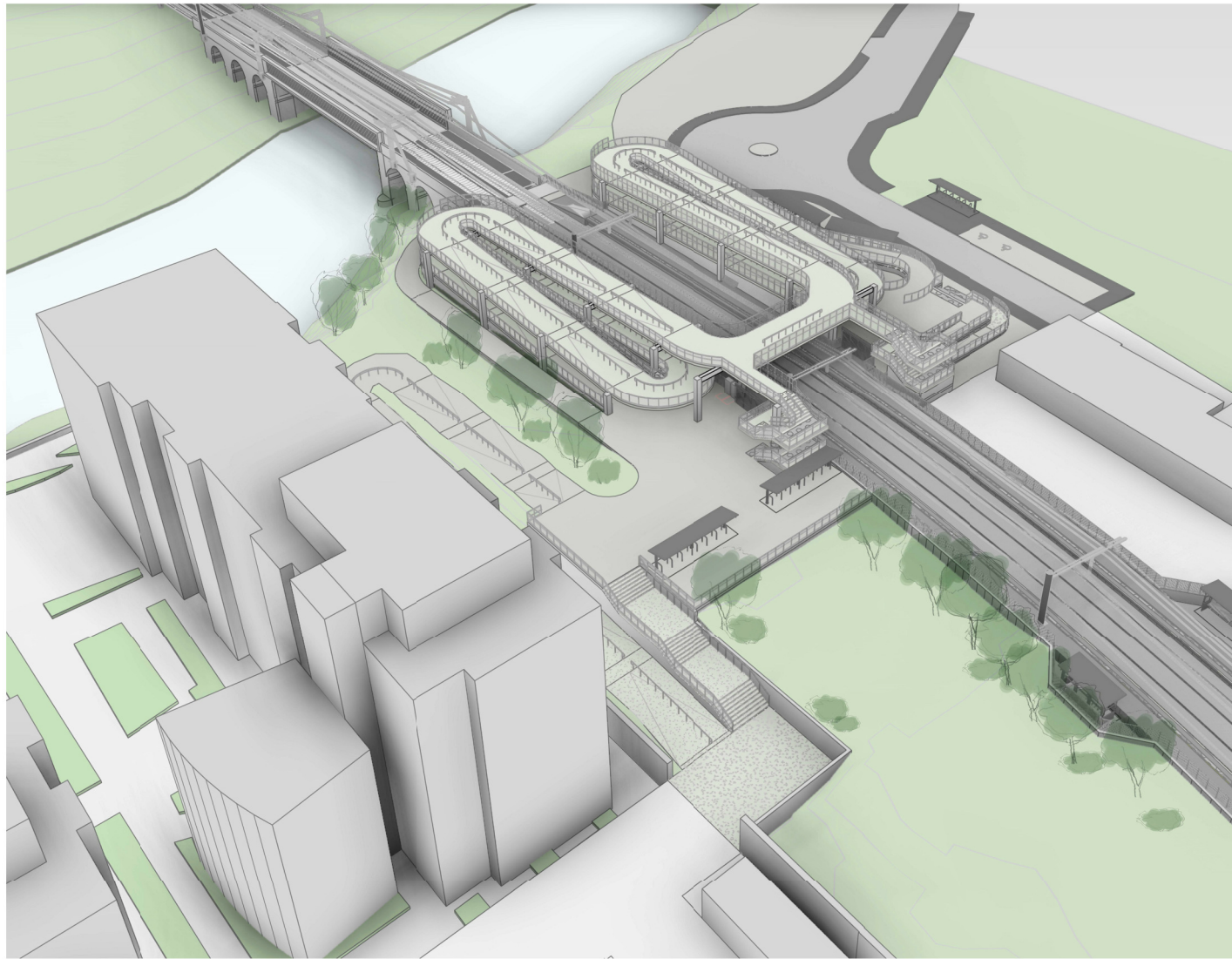
Drawing File Name: DP-04-23-DWG-RO-TTA-18971

Version: v01 | Status: S3

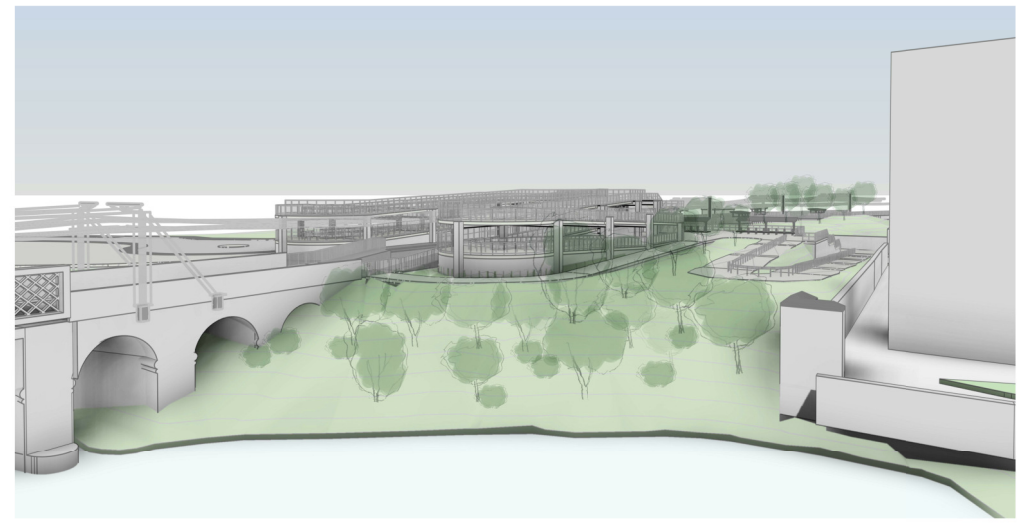
DO NOT SCALE USE FIGURED DIMENSIONS ONLY



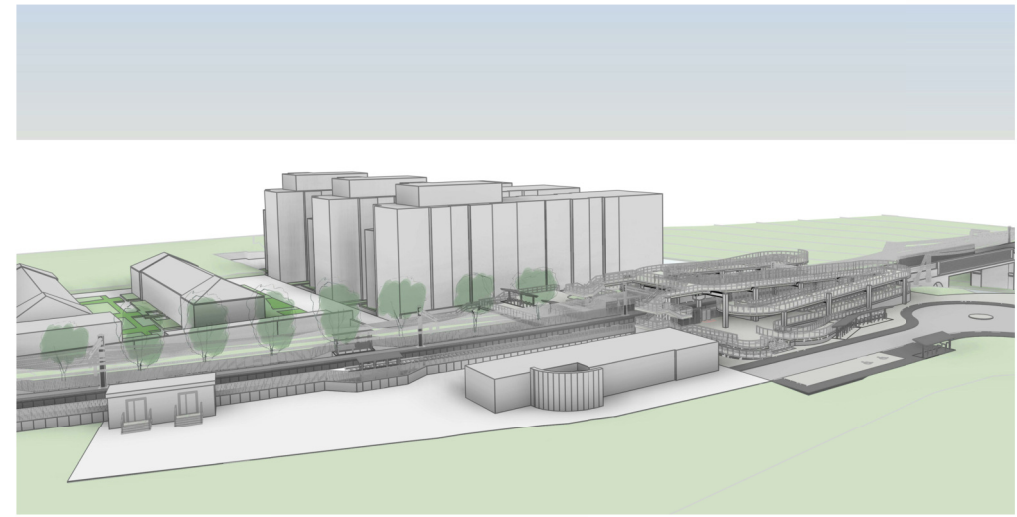
- NOTES:
1. ALL DIMENSIONS ARE IN MILLIMETRES UNLESS NOTED OTHERWISE
  2. ALL LEVELS ARE IN METRES RELATIVE TO NATIONAL ORDENANCE DATUM UNLESS NOTED OTHERWISE
  3. CHANGES ARE EXPRESSED IN METRES UNLESS NOTED OTHERWISE
  4. ALL ANGLES ARE IN DEGREES (0°-360°) UNLESS NOTED OTHERWISE
  5. DIMENSIONS ARE NOT TO BE SCALED FROM THE DRAWING



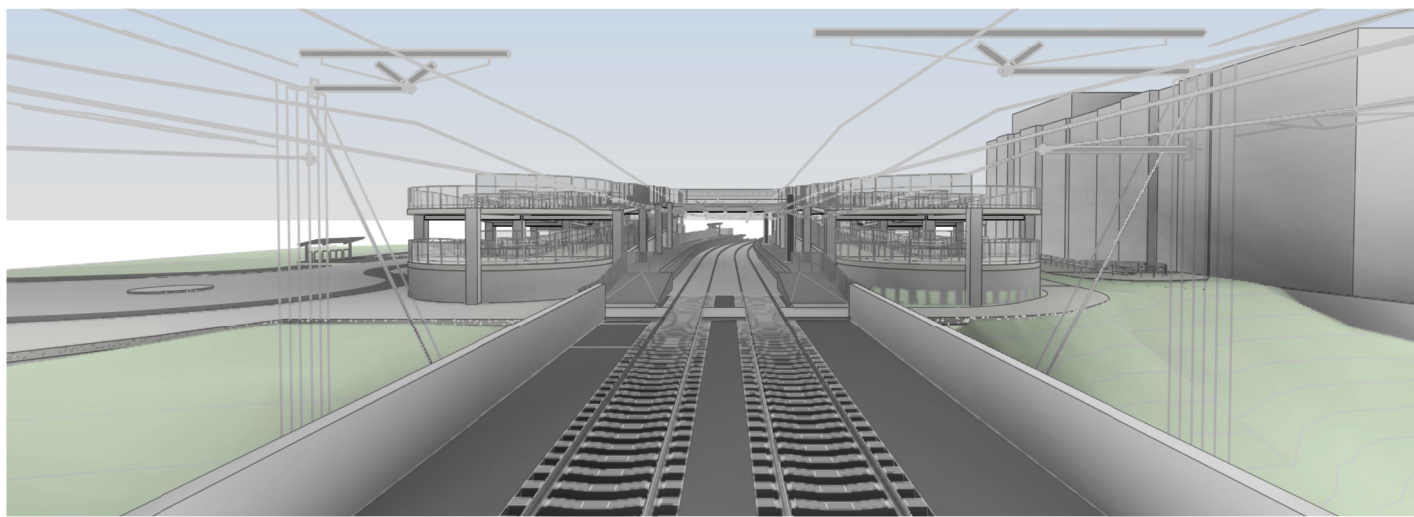
1 AERIAL VIEW FROM CLANCY QUAY



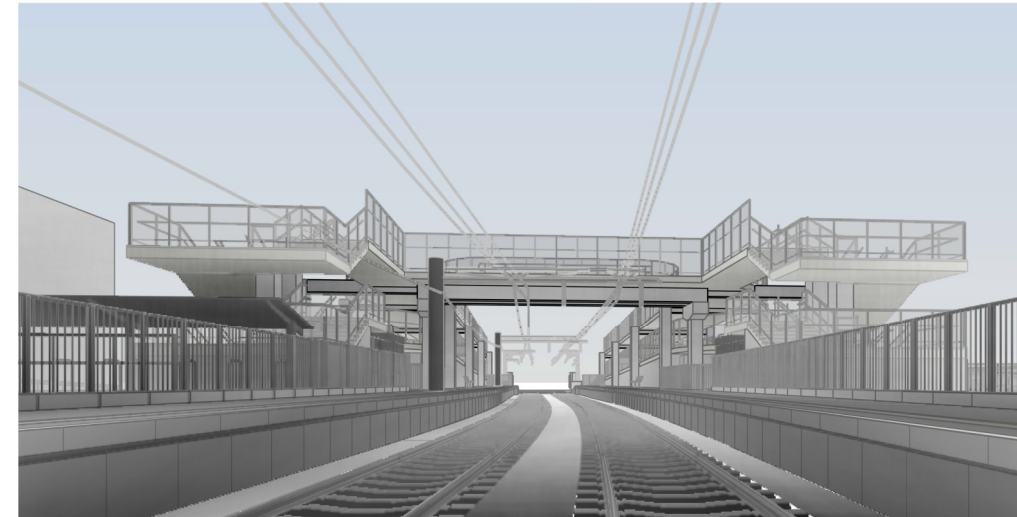
3 VIEW FROM RIVER



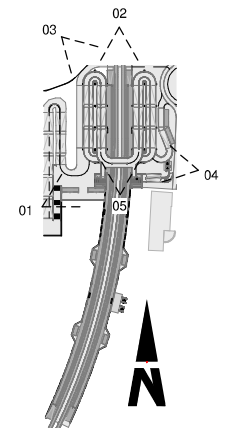
4 VIEW FROM EAST



2 VIEW FROM RAIL 2

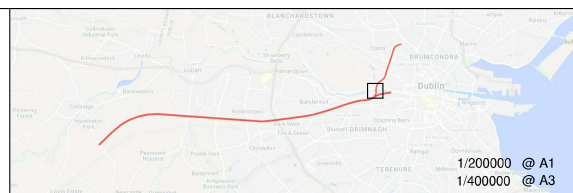


5 VIEW FROM RAIL 1



\\192.168.11.133\6629\3-WIPR\3-2-GRPH\XMLD\02-BE01\_MODELS

© Irish Rail (2022). This drawing is confidential and the copyright in it is owned by Irish Rail. This drawing must not be either loaned, copied or otherwise reproduced in whole or in part or used for any purpose without the prior permission of Irish Rail.  
 © Ordnance Survey Ireland and government of Ireland. All O.S. Data used for plans are printed under: "Copyright Ordnance Survey Ireland" Survey No. 0039722. (OSi Aerial Data or OSi Lidar Data) & Survey No. 2022/OSI/NIMA\_180 (OSi Vector Data).  
 All elevations are in metres and relate to OSi Geoid Model (OSGM02) Malin Head as defined by existing Project Control.  
 All Co-ordinates are in Irish Transverse Mercator Grid (ITM) as defined by OSi active GPS station Tallaght College (TLLG).



Rev	Date	Drn	Chk'd	App'd	Description
v01	23/11/2022	FGA	PCO	JPN	PLANNING ISSUE

Client: **Iarnród Éireann Irish Rail**

Engineering Designer: **ATKINS** (TYPSA Member of the SNC-Lavalin Group) supported by **rps**

Date: 23/11/2022 Scale: NTS @ A1, NTS @ A3

Project Code: 5199586 Issuer: TTA

Drawn: FGA, Checked: PCO, Approved: JPN

QMS Code

Project Title: **DART + SOUTH WEST**

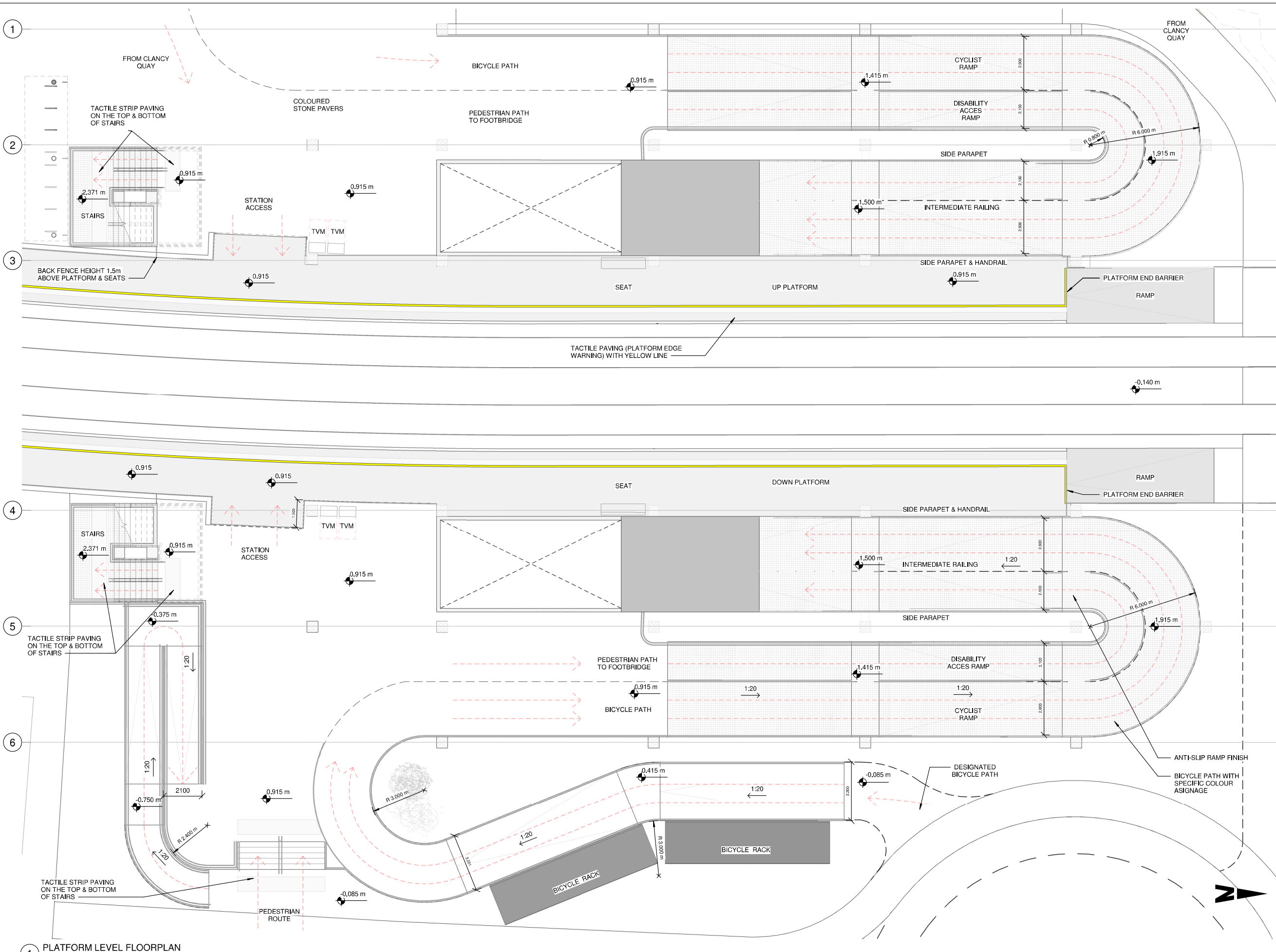
Drawing Title: **HEUSTON WEST STATION PRELIMINARY DESIGN PERSPECTIVE VIEWS**

Drawing File Name: DP-04-23-DWG-RO-TTA-18906

Version: v01 Status: S3

DO NOT SCALE USE FIGURED DIMENSIONS ONLY

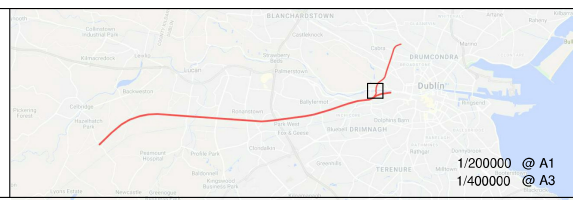




- NOTES:
1. ALL DIMENSIONS ARE IN MILLIMETRES UNLESS NOTED OTHERWISE
  2. ALL LEVELS ARE IN METRES RELATIVE TO NATIONAL ORDENANCE DATUM UNLESS NOTED OTHERWISE
  3. CHAINAGES ARE EXPRESSED IN METRES
  4. ALL ANGLES ARE IN DEGREES (0°/360°) UNLESS NOTED OTHERWISE
  5. DIMENSIONS ARE NOT TO BE SCALED FROM THE DRAWING
  6. LEVELS OF THE STATION STRUCTURE ARE IN METRES, CORRESPONDING LEVEL 0.000 TO TOP OF RAIL ALONG THE STATION

1 PLATFORM LEVEL FLOORPLAN  
1 : 100 Dimensions are in meters

© Irish Rail (2022). This drawing is confidential and the copyright in it is owned by Irish Rail. This drawing must not be either loaned, copied or otherwise reproduced in whole or in part or used for any purpose without the prior permission of Irish Rail.  
 © Ordnance Survey Ireland and government of Ireland. All O.S. Data used for plans are printed under: "Copyright Ordnance Survey Ireland" Survey No. 0039722. (OS Aerial Data or OS Lidar Data) & Survey No. 2022/OSL/NIA 180 (OS Vector Data).  
 All elevations are in metres and relate to OSi Geoid Model (OSGM02) Malin Head as defined by existing Project Control. All Co-ordinates are in Irish Transverse Mercator Grid (ITM) as defined by OSi active GPS station Tallaght College (TLLG).



Rev	Date	Drn	Chkd	App'd	Description
v01	23/11/2022	FGA	PCO	JPN	PLANNING ISSUE

Client: **Iarnród Éireann Irish Rail**

Engineering Designer: **ATKINS** (TYPSPA Member of the SNC-Lavalin Group)

Supported by: **rps**

Date: 23/11/2022 Scale: 1:100 @ A1, 1:200 @ A3

Project Code: 5199586 Issuer: TTA

Drawn: FGA Checked: PCO Approved: JPN

QMS Code

Project Title: **DART + SOUTH WEST**

Drawing Title: **HEUSTON WEST STATION PRELIMINARY DESIGN STATION ACCESS - PLATFORM LEVEL FLOORPLAN**

Drawing File Name: DP-04-23-DWG-RO-TTA-18909

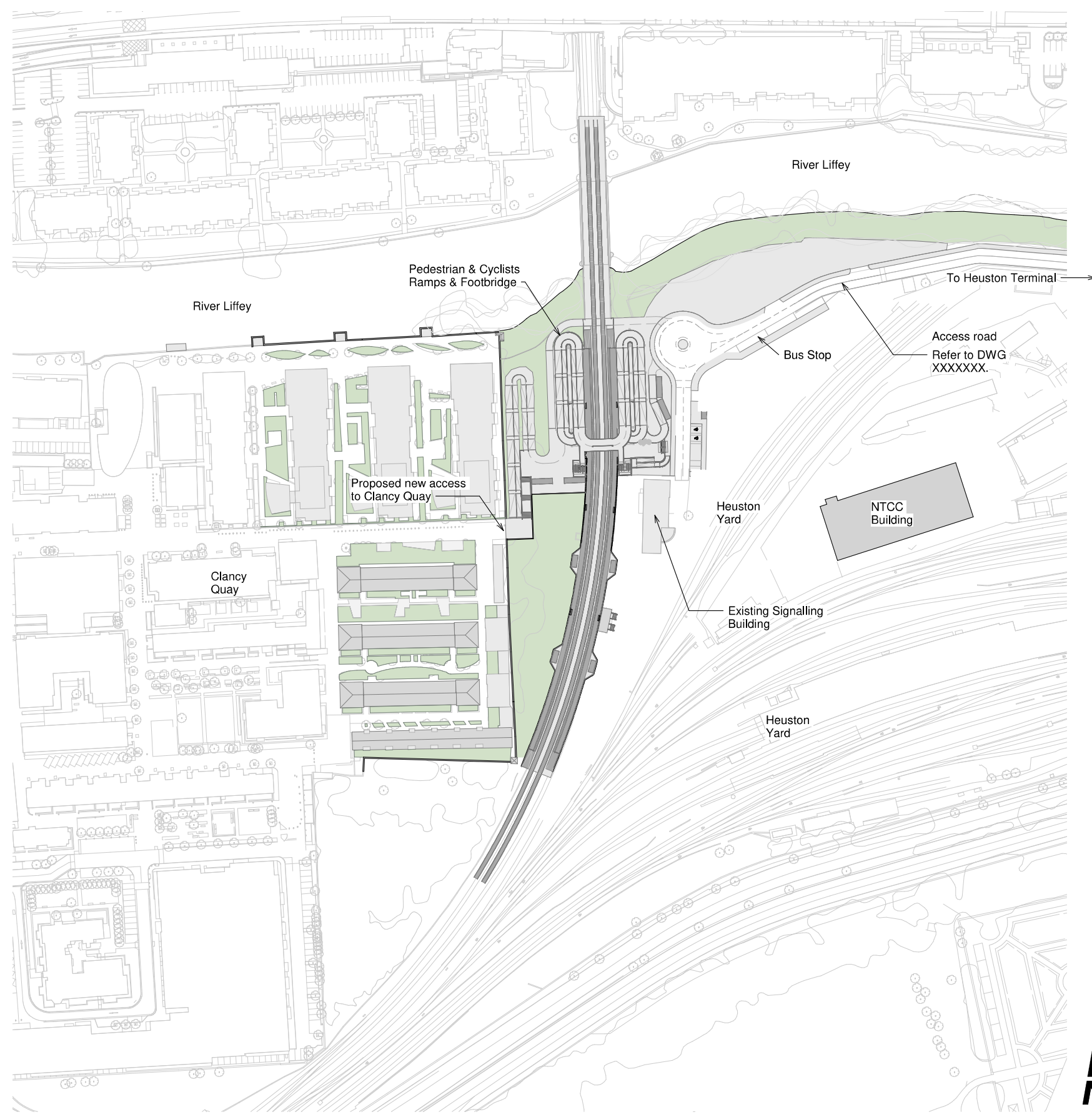
Version: v01 Status: S3

DO NOT SCALE USE FIGURED DIMENSIONS ONLY

\\192.168.11.133\6629\3-WIPR\3-2-GRPH\XMLD\02-BE01\_MODELS



- NOTES:
1. ALL DIMENSIONS ARE IN MILLIMETRES UNLESS NOTED OTHERWISE
  2. ALL LEVELS ARE IN METRES RELATIVE TO NATIONAL ORDENANCE DATUM UNLESS NOTED OTHERWISE
  3. CHANGES ARE EXPRESSED IN METRES UNLESS NOTED OTHERWISE
  4. ALL ANGLES ARE IN DEGREES (0°/360°) UNLESS NOTED OTHERWISE
  5. DIMENSIONS ARE NOT TO BE SCALED FROM THE DRAWING

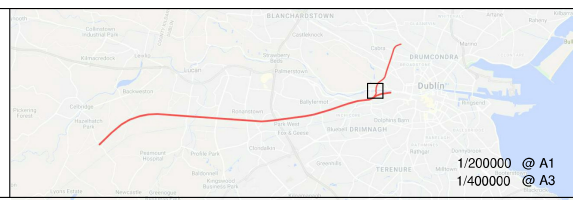


1 SITE PLAN  
1:1000



\\192.168.11.133\6629\3-WIPR\3-2-GRPH\XMLD\02-BE01\_MODELS

© Irish Rail (2022). This drawing is confidential and the copyright in it is owned by Irish Rail. This drawing must not be either loaned, copied or otherwise reproduced in whole or in part or used for any purpose without the prior permission of Irish Rail.  
 © Ordnance Survey Ireland and government of Ireland. All O.S. Data used for plans are printed under: "Copyright Ordnance Survey Ireland" Survey No. 0039722. (OSi Aerial Data or OSi Lidar Data) & Survey No. 2022/OSI\_NINA\_180 (OSi Vector Data).  
 All elevations are in metres and relate to OSi Geoid Model (OSGM02) Malin Head as defined by existing Project Control.  
 All Co-ordinates are in Irish Transverse Mercator Grid (ITM) as defined by OSi active GPS station Tallaght College (TLLG).



Rev	Date	Drn	Chkd	App'd	Description
v01	23/11/2022	FGA	PCO	JPN	PLANNING ISSUE

Client: **Iarnród Éireann Irish Rail**

Engineering Designer: **ATKINS** (Member of the SNC-Lavalin Group)

Supported by: **TYPESA**, **rps**

Date: 23/11/2022 | Scale: 1:1000 @ A1, 1:2000 @ A3

Project Code: 5199586 | Issuer: TTA

Drawn: FGA | Checked: PCO | Approved: JPN

QMS Code

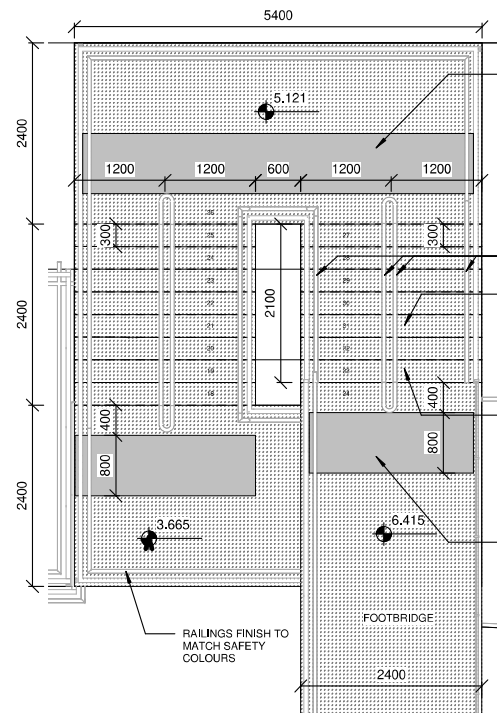
Project Title: **DART + SOUTH WEST**

Drawing Title: **HEUSTON WEST STATION PRELIMINARY DESIGN SITE PLAN**

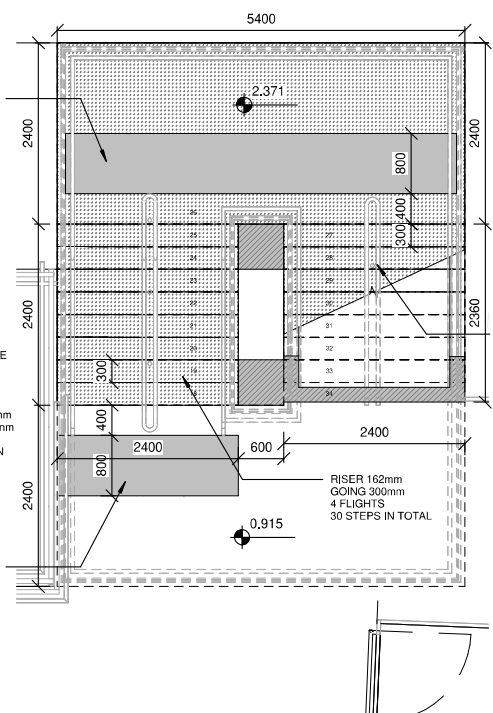
Drawing File Name: DP-04-23-DWG-RO-TTA-18905 | Version: v01 | Status: S3

DO NOT SCALE USE FIGURED DIMENSIONS ONLY

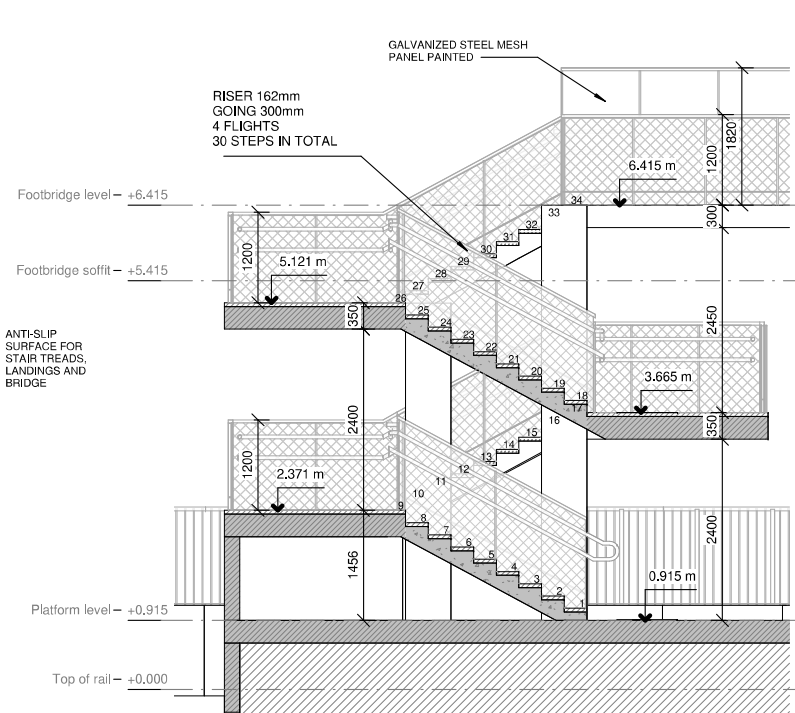




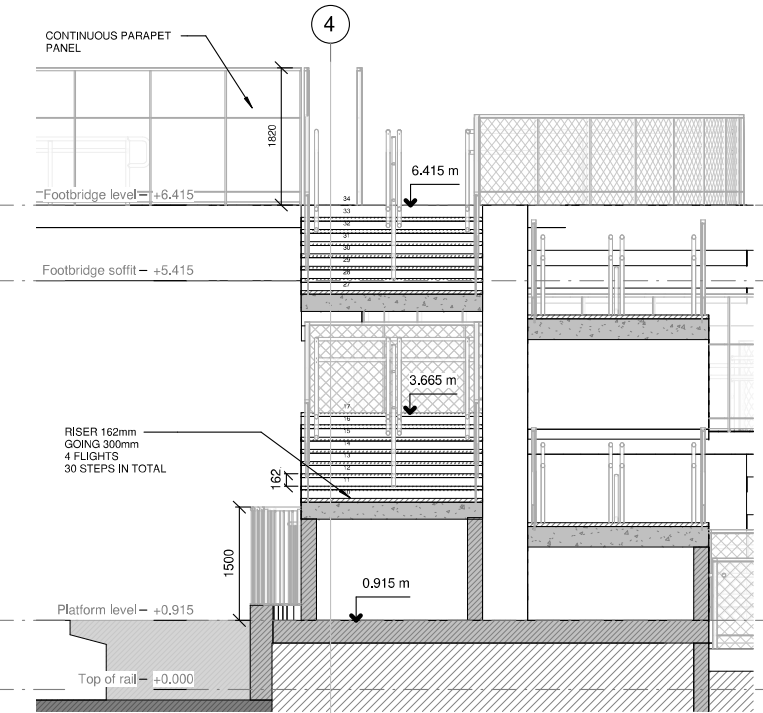
1 STAIRS FLOORPLAN  
1:50



2 PLATFORM LEVEL STAIRS FLOORPLAN  
1:50

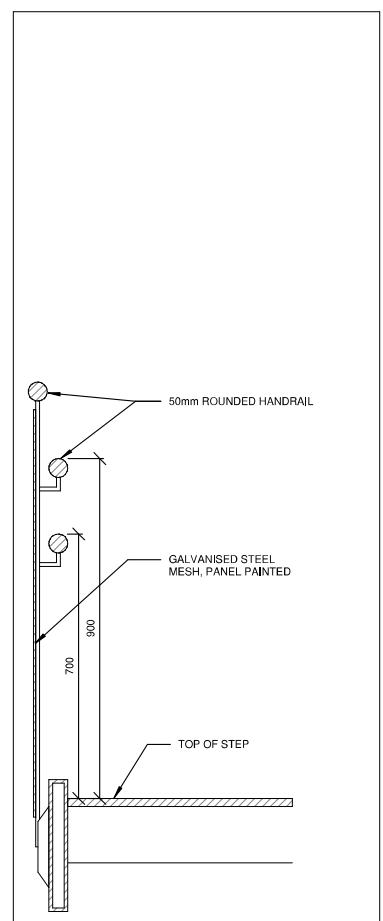


3 STAIRS LONGITUDINAL SECTION  
1:50

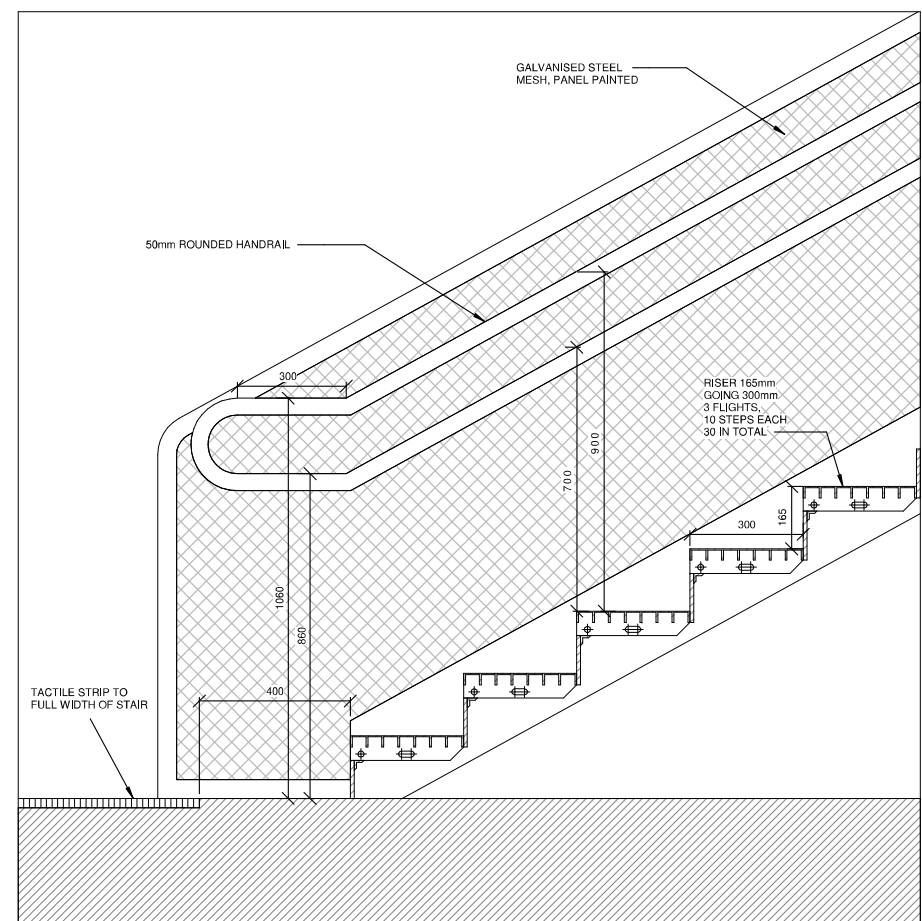


4 STAIRS CROSS SECTION  
1:50

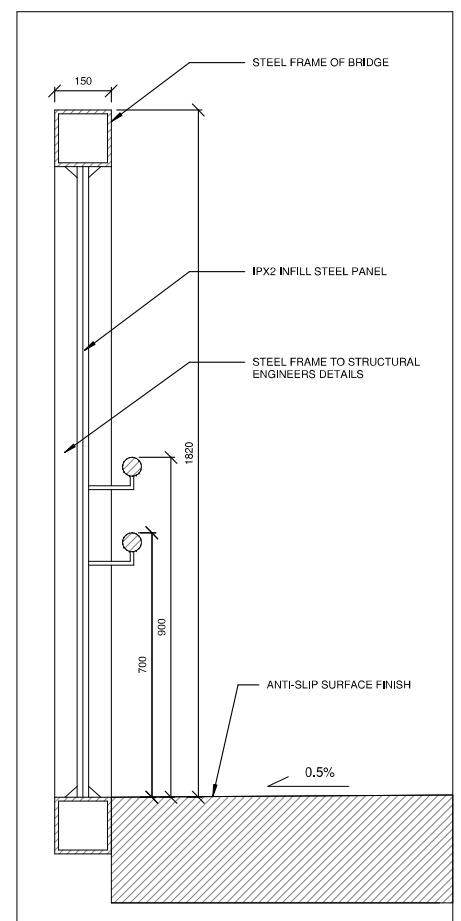
- NOTES:
1. ALL DIMENSIONS ARE IN MILLIMETRES UNLESS NOTED OTHERWISE
  2. ALL LEVELS ARE IN METRES RELATIVE TO NATIONAL ORDENANCE DATUM UNLESS NOTED OTHERWISE
  3. CHANGES ARE EXPRESSED IN METRES
  4. ALL ANGLES ARE IN DEGREES (0°/360°) UNLESS NOTED OTHERWISE
  5. DIMENSIONS ARE NOT TO BE SCALED FROM THE DRAWING
  6. LEVELS OF THE STATION STRUCTURE ARE IN METRES, CORRESPONDING LEVEL 0.000 TO TOP OF RAIL ALONG THE STATION



5 TYPICAL SECTION THROUGH STAIR  
1:10

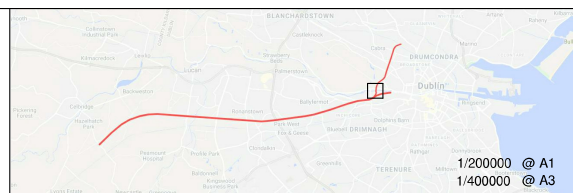


6 TYPICAL SECTION THROUGH STAIR  
1:10



7 PARAPET AND RAMP/STAIRS ADJACENT TO PLATFORM  
1:10

© Irish Rail (2022). This drawing is confidential and the copyright in it is owned by Irish Rail. This drawing must not be either loaned, copied or otherwise reproduced in whole or in part or used for any purpose without the prior permission of Irish Rail.  
 © Ordnance Survey Ireland and government of Ireland. All O.S. Data used for plans are printed under: "Copyright Ordnance Survey Ireland" Survey No. 0039722. (OSI Aerial Data or OSI Lidar Data) & Survey No. 2022/OSI\_NIMA\_180 (OSI Vector Data).  
 All elevations are in metres and relate to OSI Geoid Model (OSGM02) Malin Head as defined by existing Project Control. All Co-ordinates are in Irish Transverse Mercator Grid (ITM) as defined by OSI active GPS station Tallaght College (TLLG).



Rev	Date	Drn	Chkd	App'd	Description
v01	23/11/2022	FGA	PCO	JPN	PLANNING ISSUE

Client: **Iarnród Éireann Irish Rail**

Engineering Designer: **ATKINS** (Member of the SNC-Lavalin Group)

Supported by: **TYPSPA**, **rps**

Date: 23/11/2022 | Scale: AS SHOWN @ A3 | Drawn: FGA | Checked: PCO | Approved: JPN

Project Code: 5199586 | Issuer: TTA | OMS Code: [ ]

Project Title: **DART + SOUTH WEST**

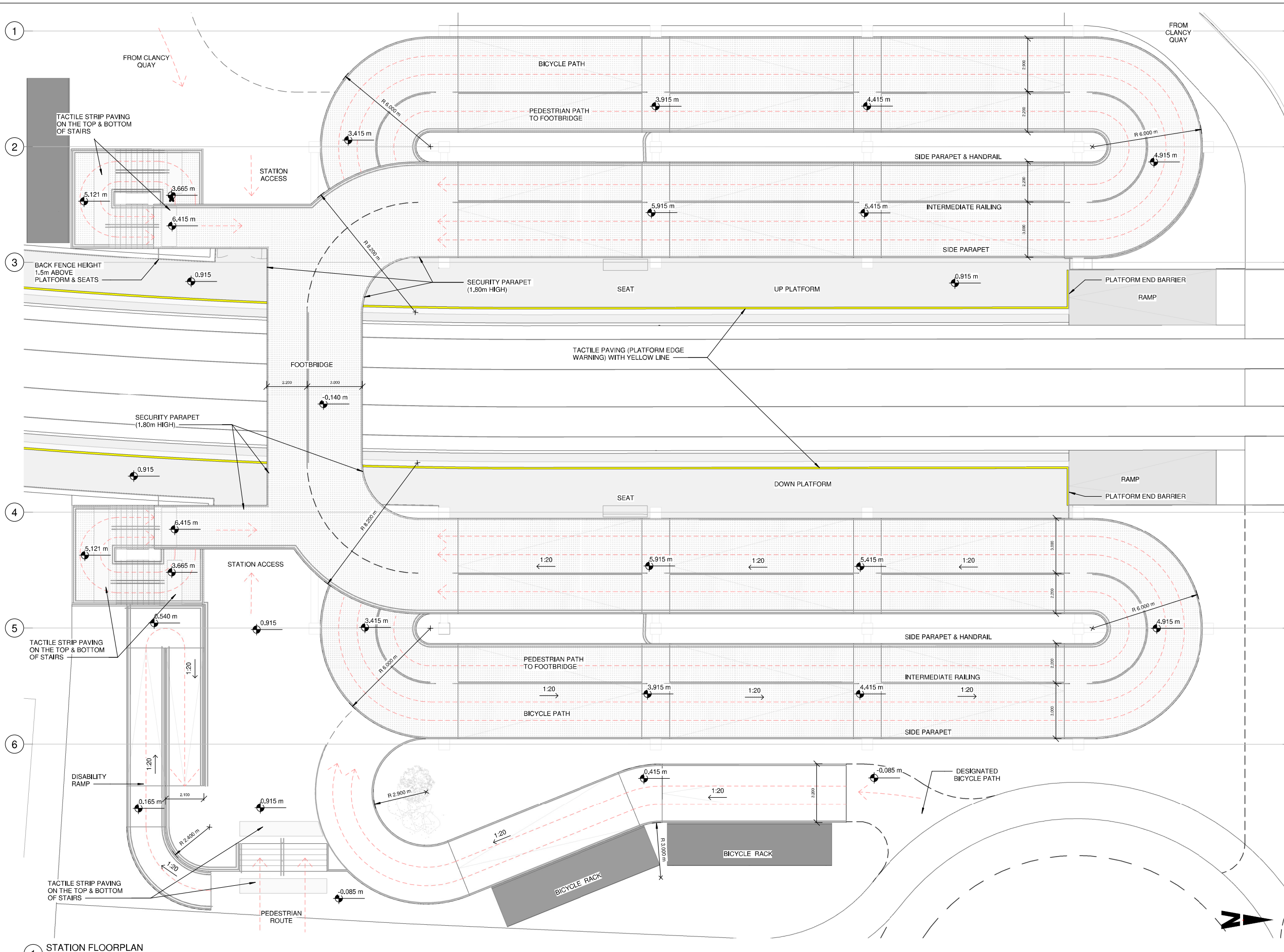
Drawing Title: **HEUSTON WEST STATION PRELIMINARY DESIGN STAIRS AND FOOTBRIDGE DETAILS**

Drawing File Name: DP-04-23-DWG-RO-TTA-18911 | Version: v01 | Status: S3

DO NOT SCALE USE FIGURED DIMENSIONS ONLY

\\192.168.11.133\6629\3-WIPR\3-2-GRPH\XMLD\02-BE01\_MODELS

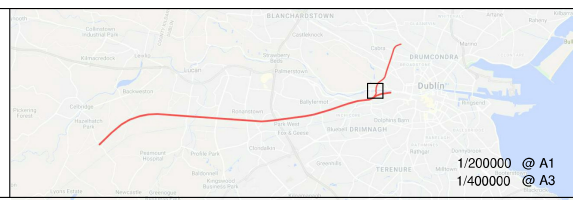




- NOTES:
1. ALL DIMENSIONS ARE IN MILLIMETRES UNLESS NOTED OTHERWISE
  2. ALL LEVELS ARE IN METRES RELATIVE TO NATIONAL ORDNANCE DATUM UNLESS NOTED OTHERWISE
  3. CHANGES ARE EXPRESSED IN METRES
  4. ALL ANGLES ARE IN DEGREES (0°360°) UNLESS NOTED OTHERWISE
  5. DIMENSIONS ARE NOT TO BE SCALED FROM THE DRAWING
  6. LEVELS OF THE STATION STRUCTURE ARE IN METRES, CORRESPONDING LEVEL 0.000 TO TOP OF RAIL ALONG THE STATION

1 STATION FLOORPLAN  
1 : 100 Dimensions are in meters.

© Irish Rail (2022). This drawing is confidential and the copyright in it is owned by Irish Rail. This drawing must not be either loaned, copied or otherwise reproduced in whole or in part or used for any purpose without the prior permission of Irish Rail.  
 © Ordnance Survey Ireland and government of Ireland. All O.S. Data used for plans are printed under: "Copyright Ordnance Survey Ireland" Survey No. 0039722. (OSI Aerial Data or OSI Lidar Data) & Survey No. 2022/OSL/NIA/180 (OSI Vector Data).  
 All elevations are in metres and relate to OSI Geoid Model (OSGM02) Malin Head as defined by existing Project Control.  
 All Co-ordinates are in Irish Transverse Mercator Grid (ITM) as defined by OSI active GPS station Tallaght College (TLLG).



Rev	Date	Drn	Chkd	App'd	Description
v01	23/11/2022	FGA	PCO	JPN	PLANNING ISSUE

Client: **Iarnród Éireann Irish Rail**

Engineering Designer: **ATKINS** (Member of the SNC-Lavalin Group), supported by **TYPESA** and **rps**.

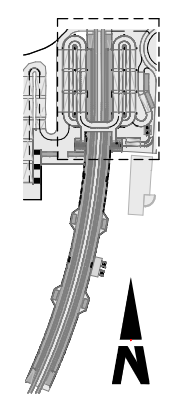
Date: 23/11/2022 | Scale: 1:100 @ A1, 1:200 @ A3 | Drawn: FGA | Checked: PCO | Approved: JPN

Project Code: 5199586 | Issuer: TTA | OMS Code:

Project Title: **DART + SOUTH WEST**

Drawing Title: **HEUSTON WEST STATION PRELIMINARY DESIGN STATION ACCESS - FOOTBRIDGE LEVEL FLOORPLAN**

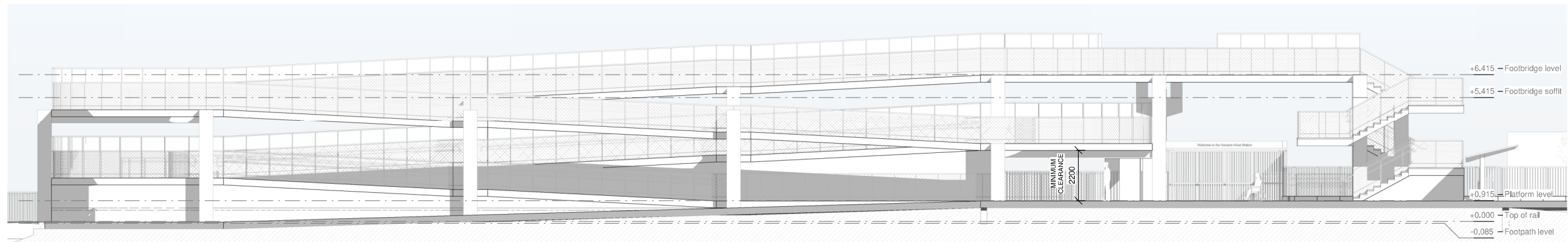
Drawing File Name: DP-04-23-DWG-RO-TTA-18908 | Version: v01 | Status: S3



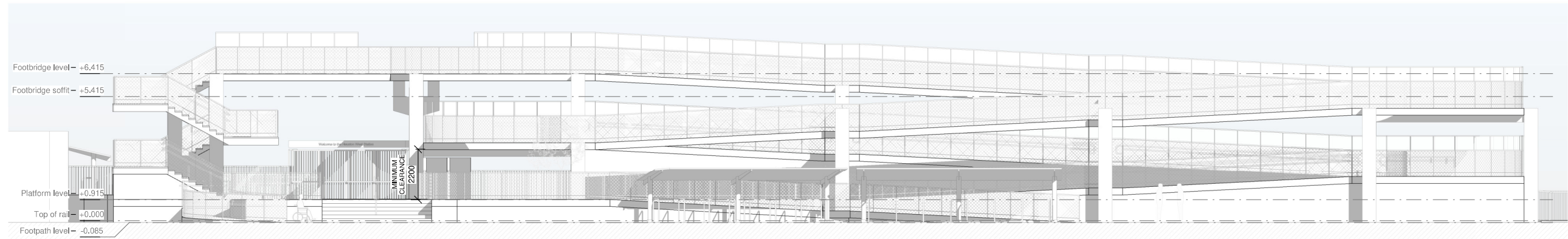
\\192.168.11.133\6629\3-WIPR\3-2-GRPH\XMLD\02-BE01\_MODELS

DO NOT SCALE USE FIGURED DIMENSIONS ONLY

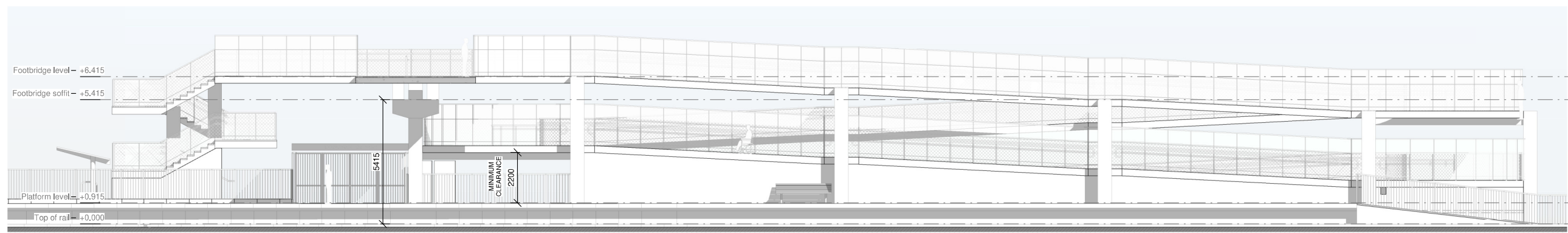




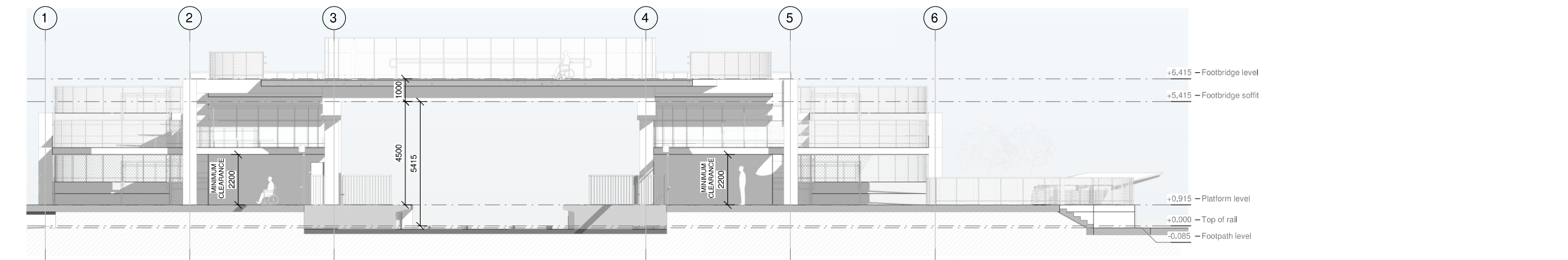
1 STATION WEST ELEVATION  
1 : 100



2 STATION EAST ELEVATION  
1 : 100

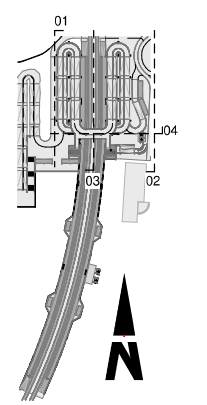


3 STATION LONGITUDINAL SECTION  
1 : 100



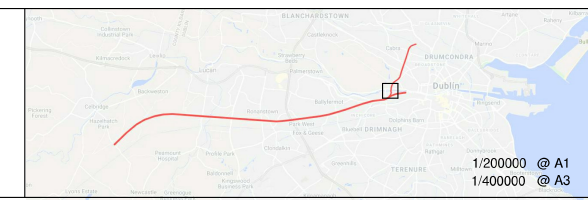
4 CROSS SECTION 02  
1 : 100

- NOTES:
1. ALL DIMENSIONS ARE IN MILLIMETRES UNLESS NOTED OTHERWISE
  2. ALL LEVELS ARE IN METRES RELATIVE TO NATIONAL ORDENANCE DATUM UNLESS NOTED OTHERWISE
  3. CHAINAGES ARE EXPRESSED IN METRES UNLESS NOTED OTHERWISE
  4. ALL ANGLES ARE IN DEGREES (0°-360°)
  5. DIMENSIONS ARE NOT TO BE SCALED FROM THE DRAWING
  6. LEVELS OF THE STATION STRUCTURE ARE IN METRES, CORRESPONDING LEVEL 0.000 TO TOP OF RAIL ALONG THE STATION



\\192.168.11.133\6629\3-WIPR\3-2-GRPH\XMLD\02-BE01\_MODELS

© Irish Rail (2022). This drawing is confidential and the copyright in it is owned by Irish Rail. This drawing must not be either loaned, copied or otherwise reproduced in whole or in part or used for any purpose without the prior permission of Irish Rail.  
 © Ordnance Survey Ireland and government of Ireland. All O.S. Data used for plans are printed under: "Copyright Ordnance Survey Ireland" Survey No. 0039722. (OSi Aerial Data or OSi Lidar Data) & Survey No. 2022/OSI\_NIMA\_180 (OSi Vector Data).  
 All elevations are in metres and relate to OSi Geoid Model (OSGM02) Malin Head as defined by existing Project Control. All Co-ordinates are in Irish Transverse Mercator Grid (ITM) as defined by OSi active GPS station Tallaght College (TLLG).



Rev	Date	Drn	Chkd	App'd	Description
v01	23/11/2022	FGA	PCO	JPN	PLANNING ISSUE

Client: **Iarnród Éireann Irish Rail**

Engineering Designer: **ATKINS** (TYPSA Member of the SNC-Lavalin Group) supported by **rps**

Date: 23/11/2022 Scale: 1:100 @ A1, 1:200 @ A3

Project Code: 5199586 Issuer: TTA

Drawn: FGA Checked: PCO Approved: JPN

QMS Code

Project Title: **DART + SOUTH WEST**

Drawing Title: **HEUSTON WEST STATION PRELIMINARY DESIGN STATION ACCESS - SECTIONS AND ELEVATIONS**

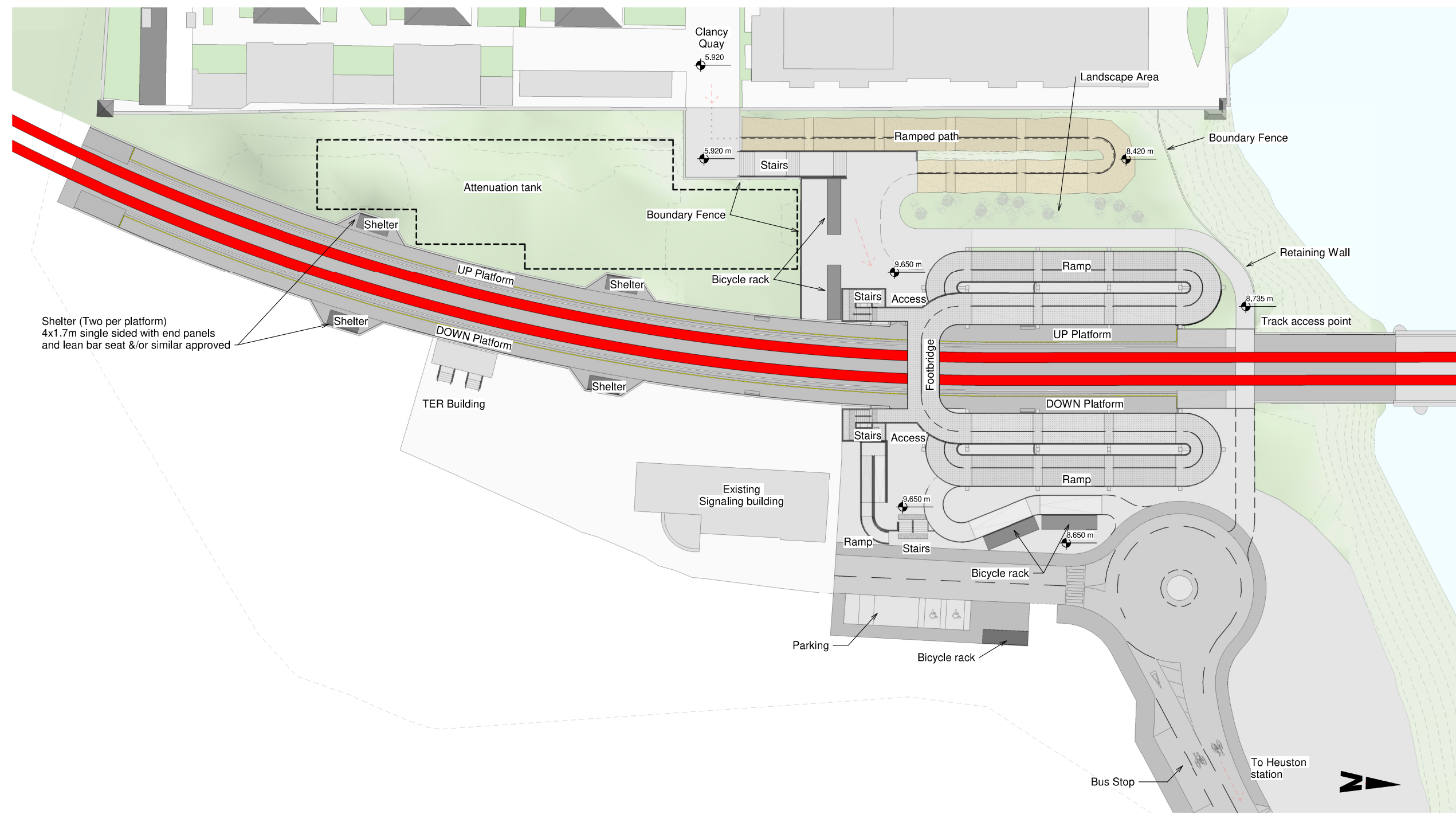
Drawing File Name: DP-04-23-DWG-RO-TTA-18910

Version: v01 Status: S3

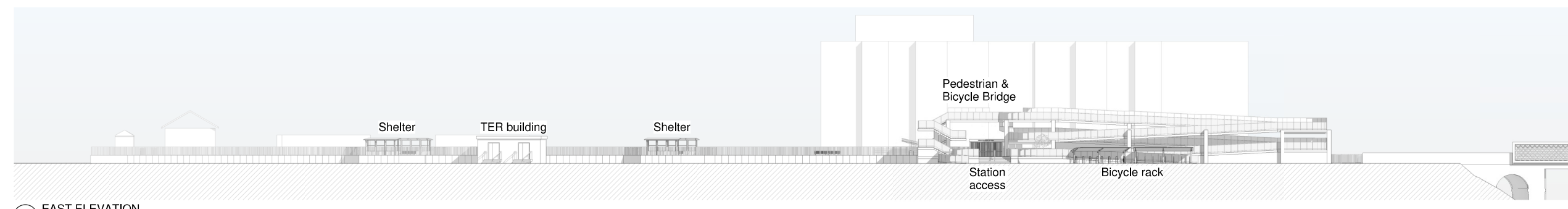
DO NOT SCALE USE FIGURED DIMENSIONS ONLY



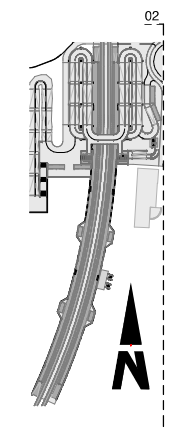
- NOTES:
1. ALL DIMENSIONS ARE IN MILLIMETRES UNLESS NOTED OTHERWISE
  2. ALL LEVELS ARE IN METRES RELATIVE TO NATIONAL ORDENANCE DATUM UNLESS NOTED OTHERWISE
  3. CHAINAGES ARE EXPRESSED IN METRES UNLESS NOTED OTHERWISE
  4. ALL ANGLES ARE IN DEGREES (0°360°) UNLESS NOTED OTHERWISE
  5. DIMENSIONS ARE NOT TO BE SCALED FROM THE DRAWING



1 PLATFORM FLOORPLAN  
1 : 350 Dimensions are in meters.

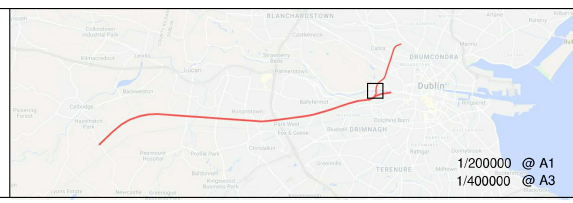


2 EAST ELEVATION  
1 : 350



\\192.168.11.133\6629\3-WIPR\3-2-GRPH\XMLD\02-BE01\_MODELS

© Irish Rail (2022). This drawing is confidential and the copyright in it is owned by Irish Rail. This drawing must not be either loaned, copied or otherwise reproduced in whole or in part or used for any purpose without the prior permission of Irish Rail.  
 © Ordnance Survey Ireland and government of Ireland. All O.S. Data used for plans are printed under: "Copyright Ordnance Survey Ireland" Survey No. 0039722. (OSI Aerial Data or OSI Lidar Data) & Survey No. 2022/OSI\_NIMA\_180 (OSI Vector Data).  
 All elevations are in metres and relate to OSI Geoid Model (OSGM02) Malin Head as defined by existing Project Control.  
 All Co-ordinates are in Irish Transverse Mercator Grid (ITM) as defined by OSI active GPS station Tallaght College (TLLG).



Rev	Date	Drn	Chk'd	App'd	Description
v01	23/11/2022	FGA	PCO	JPN	PLANNING ISSUE

Client: **Iarnród Éireann Irish Rail**

Engineering Designer: **ATKINS** (TYPSA Member of the SNC-Lavalin Group) supported by **rps**

Date: 23/11/2022 Scale: 1:350 @ A1, 1:700 @ A3

Project Code: 5199586 Issuer: TTA

Drawn: FGA Checked: PCO Approved: JPN

QMS Code

Project Title: **DART + SOUTH WEST**

Drawing Title: **HEUSTON WEST STATION PRELIMINARY DESIGN STATION AND PLATFORMS ELEVATION AND FLOORPLAN**

Drawing File Name: DP-04-23-DWG-RO-TTA-18907

Version: v01 Status: S3

DO NOT SCALE USE FIGURED DIMENSIONS ONLY