






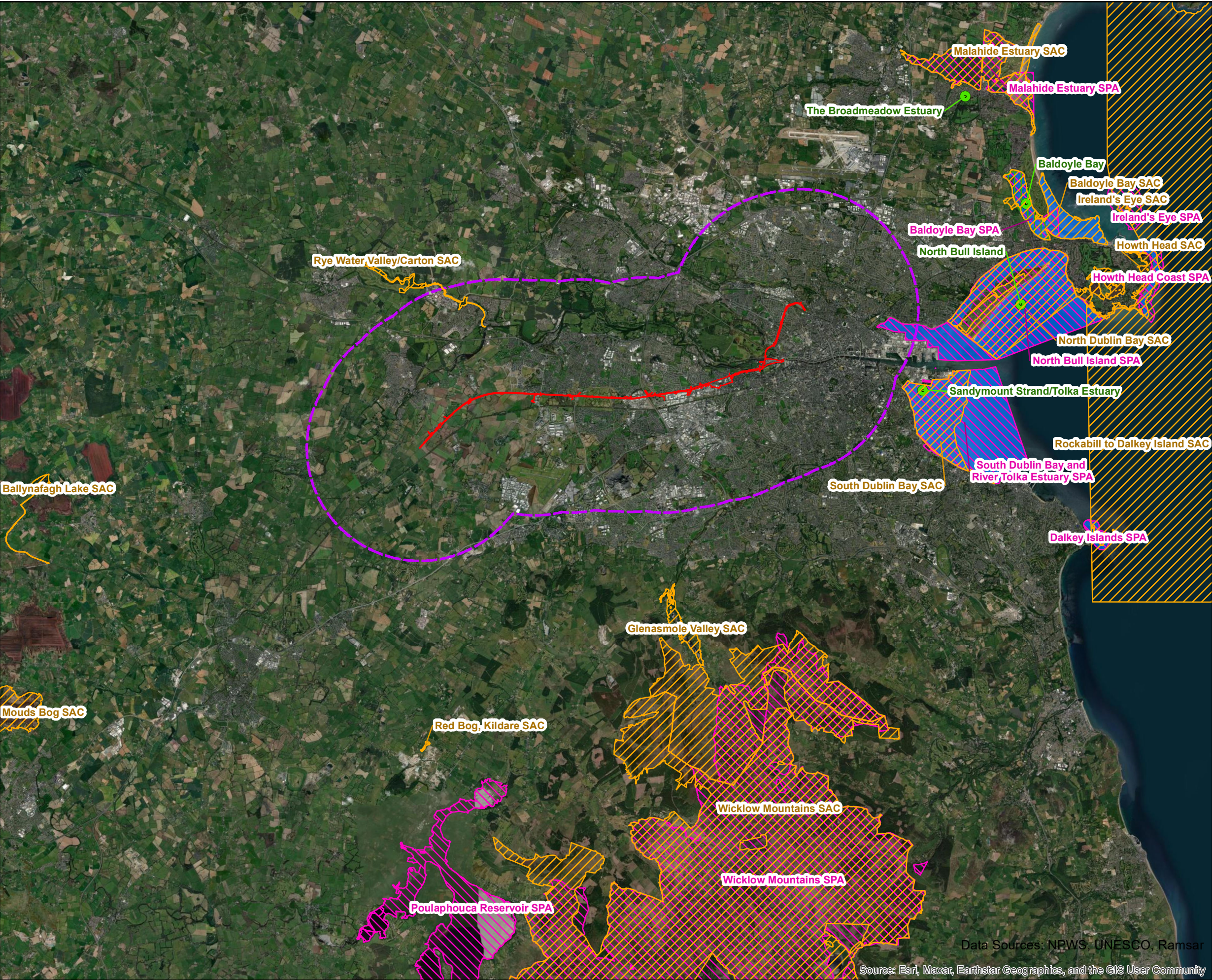


Legend

-  Reline Development Boundary
-  Biodiversity Study Area (5km Buffer)
-  Special Area of Conservation (SAC)
-  Special Protection Area (SPA)
-  Ramsar Site Boundaries
-  Ramsar Locations
- Dublin Bay Biosphere Reserve**
-  Marine Core Area

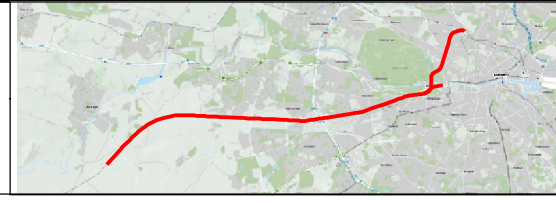


Data Sources: NPWS, UNESCO, Ramsar


Source: Esri, Maxar, Earthstar Geographics, and the GIS User Community

© Irish Rail (2022). This drawing is confidential and the copyright in it is owned by Irish Rail. This drawing must not be either loaned, copied or otherwise reproduced in whole or in part or used for any purpose without the prior permission of Irish Rail.

© Ordnance Survey Ireland and government of Ireland. All O.S Data used for plans are printed under: "Copyright Ordnance Survey Ireland" Survey No. 0039722. (OSi Aerial Data or OSi Lidar Data) & Survey No. 2022/OSi_NMA_180 (OSi Vector Data). All elevations are in metres and relate to OSi Geoid Model (OSGM02) Main Head as defined by existing Project Control. All Co-ordinates are in Irish Transverse Mercator Grid (ITM) as defined by OSi active GPS station Tallaght College (TLLG).








Rev	Date	Drn	Ch'kd	App'd	Description
v03	11/11/2022	NR	HF	MN	Designated Sites within Study Area
v02	08/09/2022	NR	HF	MN	Designated Sites within Study Area
v01	25/03/2022	NR	HF	MN	Designated Sites within Study Area

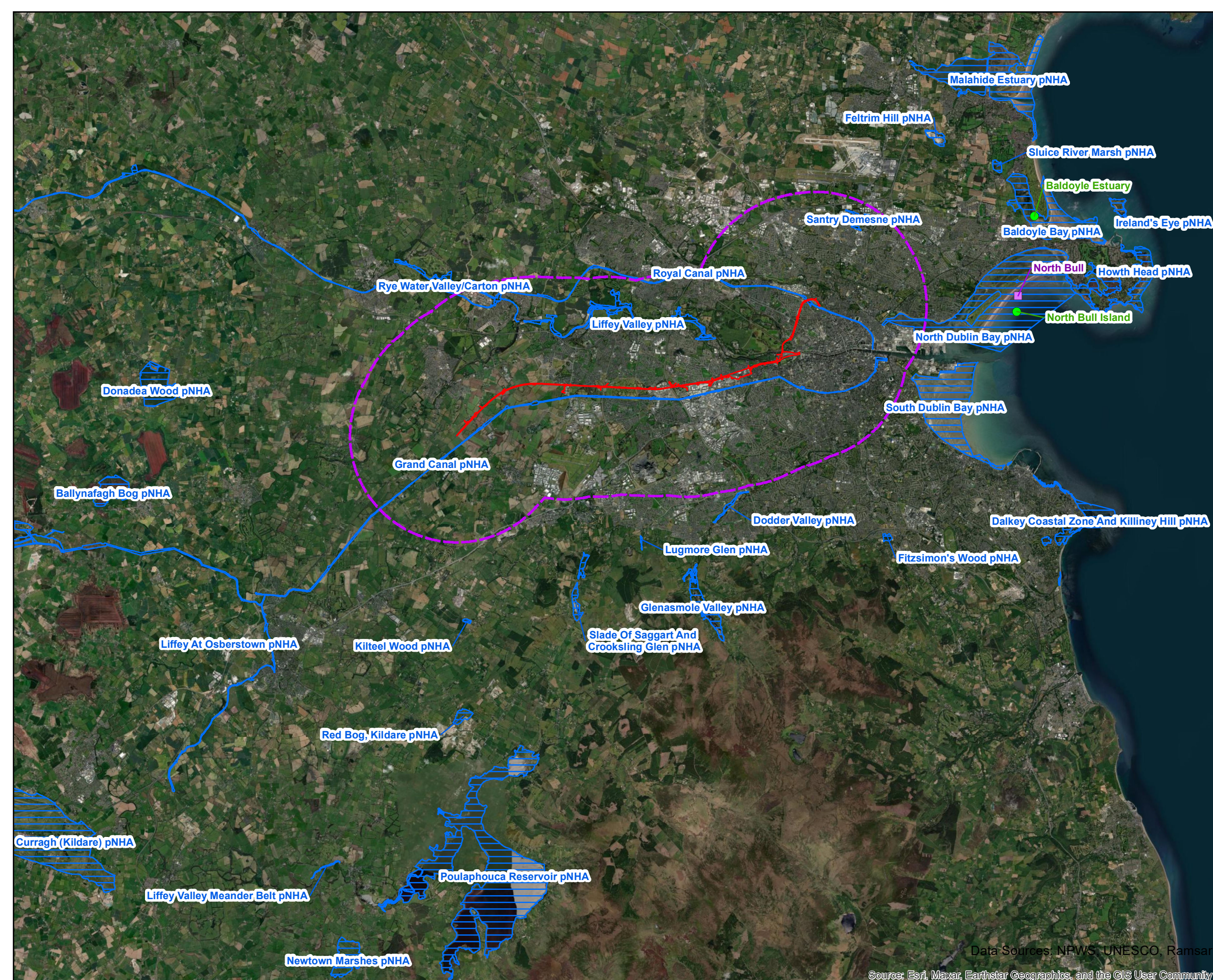
Client		Engineering Designer		
				
Date		Scale		
11/11/2022		1:165,000 @ A3		
Project Code		QMS Code		
5195886		NR HF MN		
Issuer		Checked		
TTA		HF MN		
Approved		Approved		
		MN		

Project Title		DART + SOUTH WEST	
Drawing Title		Figure 8.2: Designated sites for nature conservation within the study area Map 1 of 2: International	
Drawing File Name	DP-04-23-DWG-EV-TTA-23762	Version	v03
Status	S3		

DO NOT SCALE USE FIGURED DIMENSIONS ONLY

Legend

-  Reline Development Boundary
-  Biodiversity Study Area (5km Buffer)
-  Nature Reserves
-  Wildfowl Sanctuaries
-  Proposed Natural Heritage Area (pNHA)

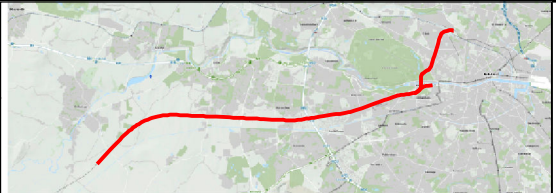


Data Sources: NPWS, UNESCO, Ramsar
 Source: Esri, Maxar, Earthstar Geographics, and the GIS User Community



© Irish Rail (2022). This drawing is confidential and the copyright in it is owned by Irish Rail. This drawing must not be either loaned, copied or otherwise reproduced in whole or in part or used for any purpose without the prior permission of Irish Rail.

© Ordnance Survey Ireland and government of Ireland. All O.S Data used for plans are printed under: "Copyright Ordnance Survey Ireland" Survey No. 0039722. (OSi Aerial Data or OSi Lidar Data) & Survey No. 2022/OSi_NMA_180 (OSi Vector Data). All elevations are in metres and relate to OSi Geoid Model (OSGM02) Malin Head as defined by existing Project Control. All Co-ordinates are in Irish Transverse Mercator Grid (ITM) as defined by OSi active GPS station Tallaght College (TLLG).



Rev	Date	Drn	Ch'kd	App'd	Description
v03	11/11/2022	NR	HF	MN	Designated Sites within Study Area
v02	08/09/2022	NR	HF	MN	Designated Sites within Study Area
v01	25/03/2022	NR	HF	MN	Designated Sites within Study Area

Client: **Iarnród Éireann Irish Rail**

Engineering Designer: **ATKINS** (Member of the SNC-Lavalin Group), **TVPSA**, **TUC RAIL**

Supported by: **rps**

Date: 11/11/2022 | Scale: 1:174,000 @ A3

Project Code: 5195886 | Issuer: TTA

Drawn: NR | Checked: HF | Approved: MN

QMS Code: _____

Project Title	DART + SOUTH WEST		
Drawing Title	Figure 8.2: Designated sites for nature conservation within the study area Map 2 of 2: National		
Drawing File Name	DP-04-23-DWG-EV-TTA-23762	Version	v03
Status	S3		

DO NOT SCALE USE FIGURED DIMENSIONS ONLY