

COOLMINE

3

2

1

LEGEND

- X SEB
- X TER
- CAMERA
- LIMIT IÉ PROPERTY

KEYPLAN

M3 PARKWAY

CLONSILLA

MAYNOOTH

DUBLIN

| | | | | | |
|-----|----------|---------------------|-------------|-------------|-------------|
| REV | DATE | DESCRIPTION | PRODUCED BY | REVIEWED BY | APPROVED BY |
| V01 | May 2021 | PUBLIC CONSULTATION | MCG | AGV/MMF/MPT | CCS |

© Irish Rail (2021). This drawing is confidential and the copyright in it is owned by Irish Rail. This drawing must not be either loaned, copied or otherwise reproduced in whole or in part or used for any purpose without the prior permission of Irish Rail.
 © Ordnance Survey Ireland and Government of Ireland. All O.S. data used for plans are printed under "Copyright Ordnance Survey Ireland".
 Survey No. 0039720 (OS Aerial Data or OS Lidar Data 1 & Survey No. 2020/OSI_NMA_180 (OS Vector Data).
 All elevations are in metres and relate to OSi Geoid Model (OSGM02) Mean Head as defined by existing Project Control.
 All Co-ordinates are in Irish Transverse Mercator Grid (ITM) as defined by OSi active GPS station Tallaght College (TLLG).

Client

Consultant

Project

Drawing Title

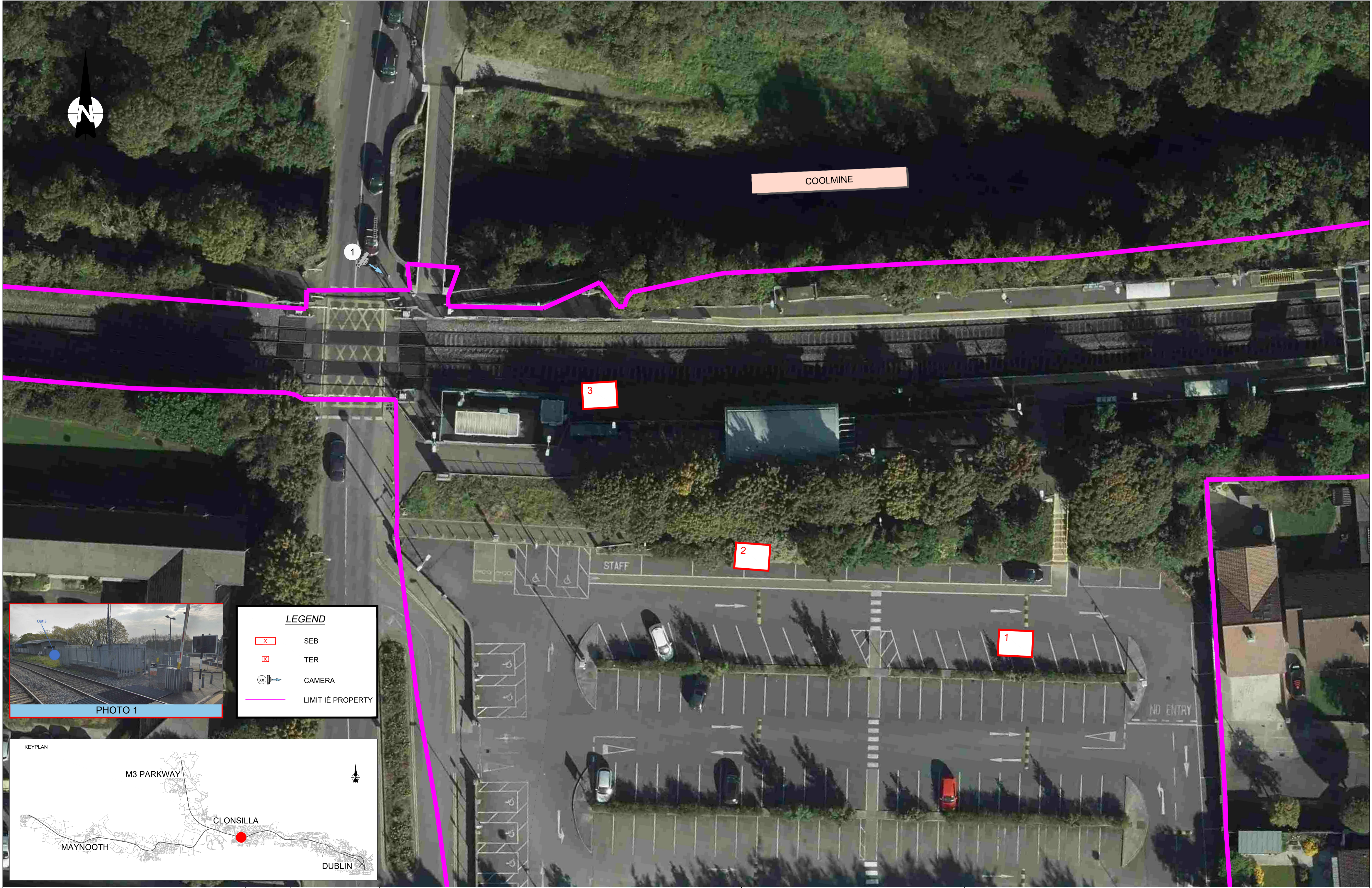
SET SIGNALLING AND TELECOMS BUILDINGS - PLANS
COOLMINE

Scale: 1:500 @ A1

| | | | | | | | | |
|----------------|---------|------------|------------|----------|------|------|--------|-------|
| Drawing Number | Project | Originator | Discipline | Location | Type | Role | Number | Phase |
| MAY | MDC | SET | RS10 | DR | Z | 0001 | B | |

| | | | |
|----------|----------|----------------------------|------|
| Date: | Job No: | Status: | Rev: |
| May 2021 | P/101086 | S4 Suitable for Acceptance | V01 |

Sheet: 01 of 02



COOLMINE

1

3

2

1



| LEGEND | |
|--------|-------------------|
| | SEB |
| | TER |
| | CAMERA |
| | LIMIT IÉ PROPERTY |



| REV. | DATE | DESCRIPTION | MCG | AGV/MMF/MPT | CCS |
|------|----------|---------------------|-----|-------------|-----|
| V01 | May 2021 | PUBLIC CONSULTATION | | | |

© Irish Rail (2021). This drawing is confidential and the copyright in it is owned by Irish Rail. This drawing must not be either loaned, copied or otherwise reproduced in whole or in part or used for any purpose without the prior permission of Irish Rail.
 © Ordnance Survey Ireland and Government of Ireland. All O.S. data used for plans are printed under "Copyright Ordnance Survey Ireland".
 Survey No. 0039720 (OSi Aerial Data or OSi Lidar Data 1) & Survey No. 2020/OSi_NMA_180 (OSi Vector Data).
 All elevations are in metres and relate to OSi Geoid Model (OSGM02) Mean Head as defined by existing Project Control.
 All Co-ordinates are in Irish Transverse Mercator Grid (ITM) as defined by OSi active GPS station Tallaght College (TLLG).

Client



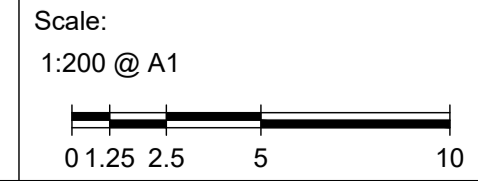
Project



Drawing Title

SET SIGNALLING AND TELECOMS BUILDINGS - PLANS
COOLMINE

Consultant



| Drawing Number | Project | Originator | Discipline | Location | Type | Role | Number | Phase |
|----------------|---------|------------|------------|----------|------|------|--------|-------|
| MAY | MDC | SET | RS10 | DR | Z | 0001 | B | |

| | | | | |
|----------------|------------------|------------------------------------|----------|-----------------|
| Date: May 2021 | Job No: P/101086 | Status: S4 Suitable for Acceptance | Rev: V01 | Sheet: 02 of 02 |
|----------------|------------------|------------------------------------|----------|-----------------|