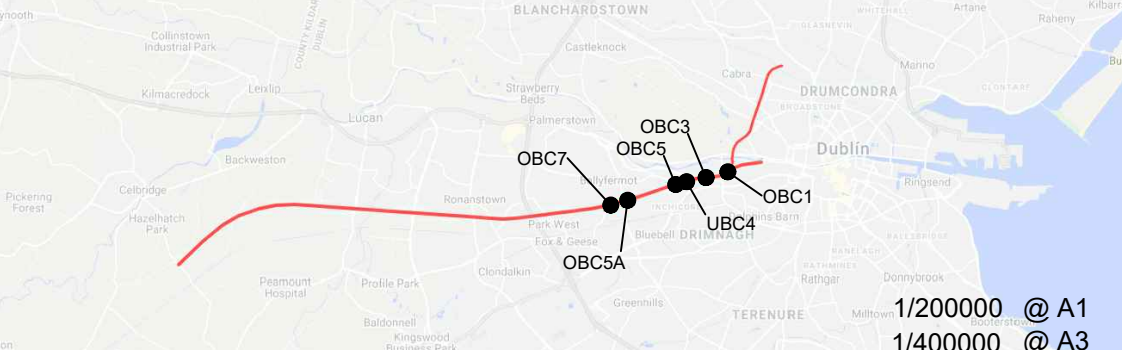


LEGEND :-
----- IRISH RAIL PROPERTY
BOUNDARY

© Irish Rail (2021). This drawing is confidential and the copyright in it is owned by Irish Rail. This drawing must not be either loaned, copied or otherwise reproduced in whole or in part or used for any purpose without the prior permission of Irish Rail.
© Ordnance Survey Ireland and government of Ireland. All O.S. Data used for plans are printed under: "Copyright Ordnance Survey Ireland" Survey No. 0039721. (OSi Aerial Data or OSi Lidar Data) & Survey No. 2020/OSi_NMA_180 (OSi Vector Data). All elevations are in metres and relate to OSi Geoid Model (OSGM02) Main Head as defined by existing Project Control. All Co-ordinates are in Irish Transverse Mercator Grid (ITM) as defined by OSi active GPS station Tallaght College (TLLG).

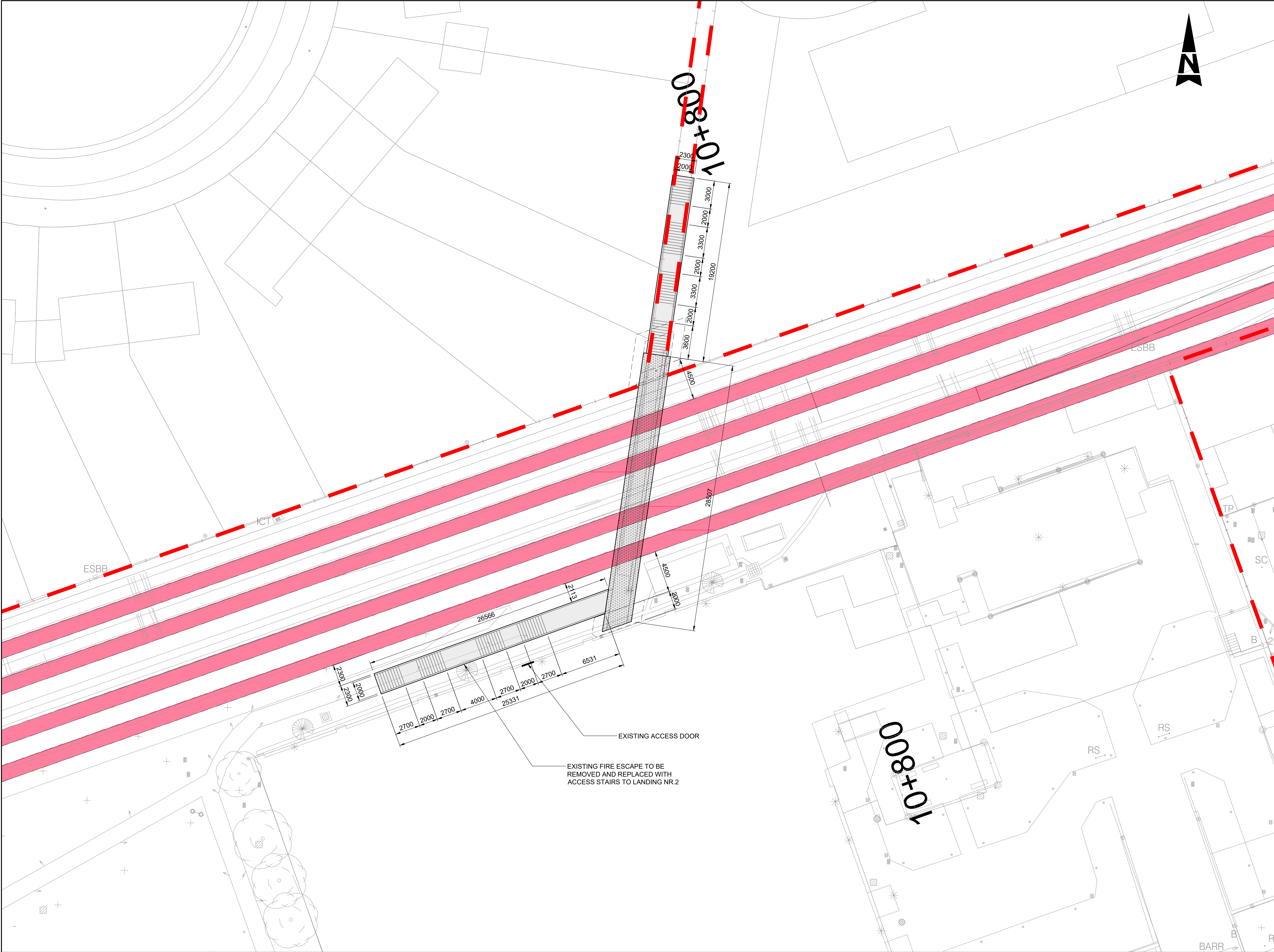


| Rev | Date | Dm | Chk'd | App'd | Description |
|-----|----------|-----|-------|-------|----------------------------------|
| v01 | 29/10/21 | AOS | RM | AG | ISSUED FOR PUBLIC CONSULTATION 2 |

| | |
|--|-----------------------------------|
| Client Iarnród Éireann Irish Rail | |
| Date 06/09/21 | Scale 1:200 @ A1 1:400 @ A3 |
| Project Code 5199586 | Issuer TTA |

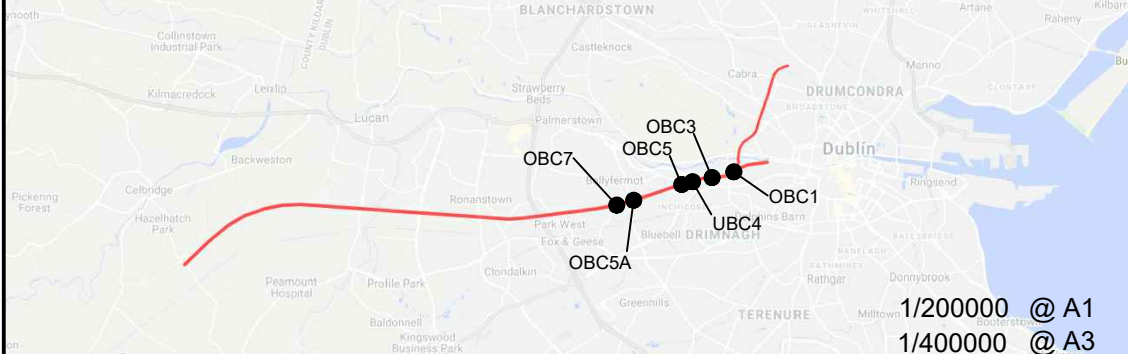
| | |
|---|---------------|
| Engineering Designer ATKINS Member of the SNC-Lavalin Group Supported by rps | |
| Drawn AOS | Checked RM |
| Approved AG | QMS Code |

| | |
|---|----------------|
| Project Title DART + SOUTH WEST | |
| Drawing Title KHYBER PASS FOOTBRIDGE (OBC5) GENERAL ARRANGEMENT | |
| Drawing File Name DP-04-23-DWG-ST-TTA-57150 | Version v01 |
| Status S3 | |



LEGEND :-
IRISH RAIL PROPERTY BOUNDARY

© Irish Rail (2021). This drawing is confidential and the copyright in it is owned by Irish Rail. This drawing must not be either loaned, copied or otherwise reproduced in whole or in part or used for any purpose without the prior permission of Irish Rail.
© Ordnance Survey Ireland and government of Ireland. All O.S. Data used for plans are printed under: "Copyright Ordnance Survey Ireland" Survey No. 0039721. (OSi Aerial Data or OSi Lidar Data) & Survey No. 2020/OSi_NMA_180 (OSi Vector Data). All elevations are in metres and relate to OSi Geoid Model (OSGM02) Main Head as defined by existing Project Control. All Co-ordinates are in Irish Transverse Mercator Grid (ITM) as defined by OSi active GPS station Tallaght College (TLLG).



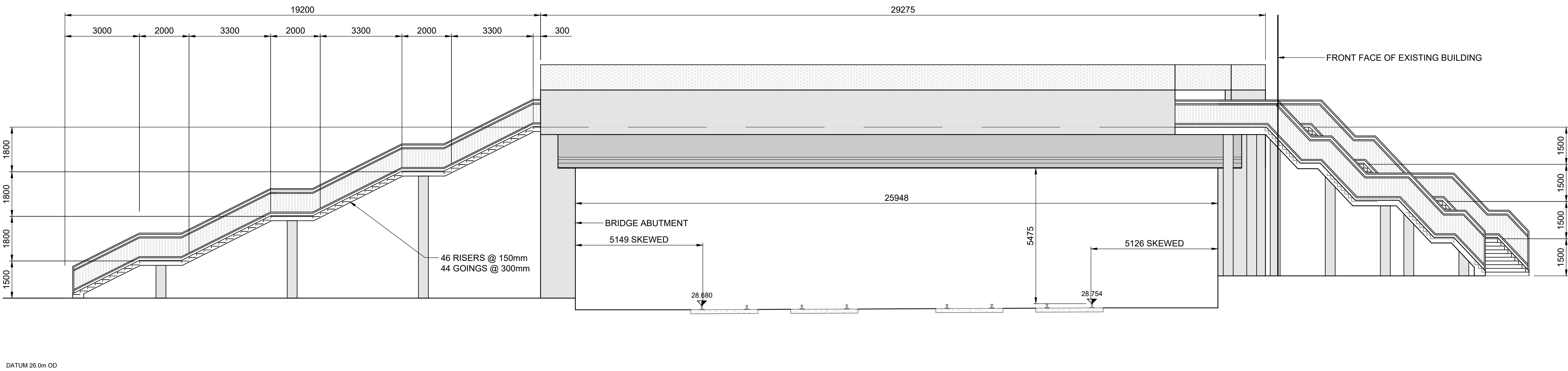
| Rev | Date | Drm | Chk'd | App'd | Description |
|-----|----------|-----|-------|-------|----------------------------------|
| v01 | 29/10/21 | AOS | RM | AG | ISSUED FOR PUBLIC CONSULTATION 2 |

| | |
|---|-----------------------------------|
| Client Iarnród Éireann Irish Rail | |
| Date 06/09/21 | Scale 1:200 @ A1 1:400 @ A3 |
| Project Code 5199586 | Issuer TTA |

| | |
|--|---------------|
| Engineering Designer ATKINS Member of the SNC-Lavalin Group | |
| Drawn AOS | Checked RM |
| Approved AG | QMS Code |

| | |
|--|--------------|
| Project Title DART + SOUTH WEST | |
| Drawing Title KHYBER PASS FOOTBRIDGE (OBC5) BRIDGE DECK PLAN | |
| Drawing File Name DP-04-23-DWG-ST-TTA-57151 | Status S3 |

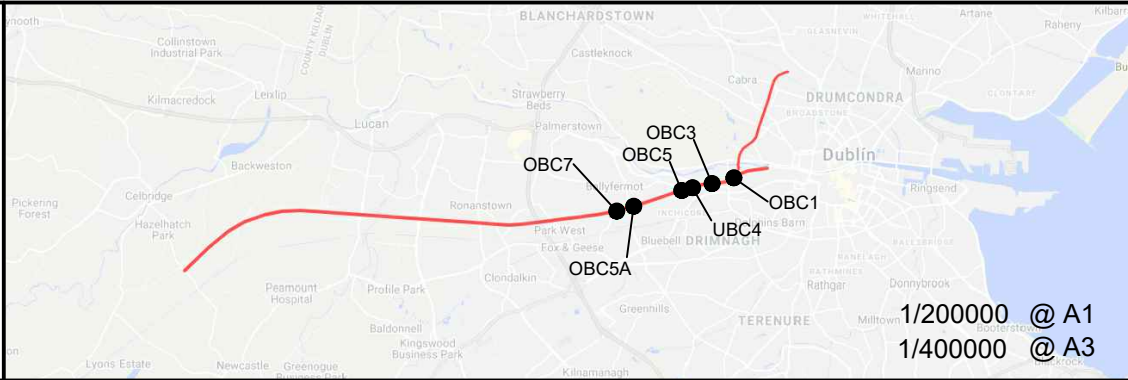
DO NOT SCALE USE FIGURED DIMENSIONS ONLY



WESTERN ELEVATION
Scale at A1 1:100
Scale at A3 1:200

V:\5199586 Cork\6 Dwg-Graphics\61 AutoCad\PC2\DP-04-23-DWG-ST-TTA-57152.dwg

© Irish Rail (2021). This drawing is confidential and the copyright in it is owned by Irish Rail. This drawing must not be either loaned, copied or otherwise reproduced in whole or in part or used for any purpose without the prior permission of Irish Rail.
© Ordnance Survey Ireland and government of Ireland. All O.S. Data used for plans are printed under: "Copyright Ordnance Survey Ireland" Survey No. 0039721. (OSi Aerial Data or OSi Lidar Data) & Survey No. 2020/OSI_NMA_180 (OSi Vector Data).
All elevations are in metres and relate to OSi Geoid Model (OSGM02) Main Head as defined by existing Project Control.
All Co-ordinates are in Irish Transverse Mercator Grid (ITM) as defined by OSi active GPS station Tallaght College (TLLG).



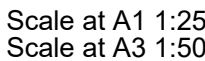
| Rev | Date | Dm | Chk'd | App'd | Description |
|-----|----------|-----|-------|-------|----------------------------------|
| v01 | 29/10/21 | AOS | RM | AG | ISSUED FOR PUBLIC CONSULTATION 2 |

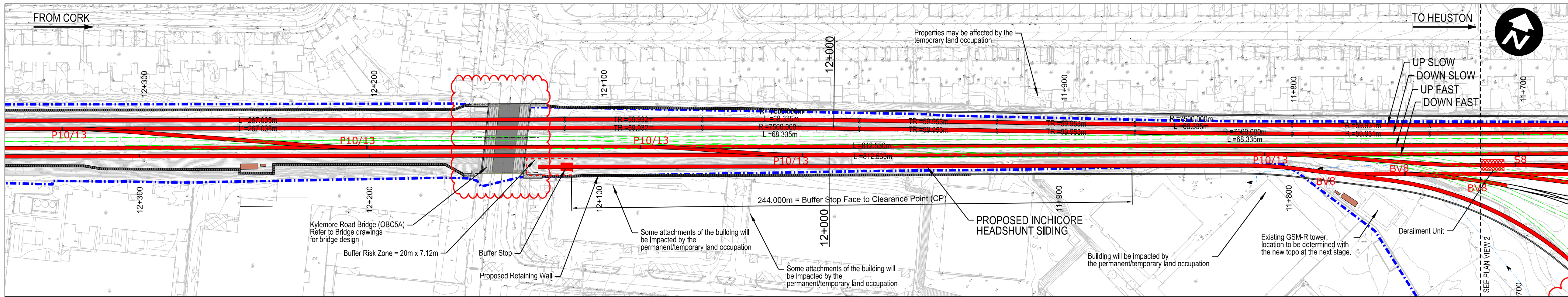
| | |
|-------------------------------|--------------------------|
| Client | |
| Iarnród Éireann Irish Rail | |
| Date | 06/09/21 |
| Scale | Shown @ A1 Shown @ A3 |
| Project Code | 5199586 |
| Issuer | TTA |

| | | |
|----------------------|----------|---------|
| Engineering Designer | | |
| ATKINS | | |
| Supported by: rps | | |
| Drawn | AOS | Checked |
| RM | Approved | AG |
| QMS Code | | |

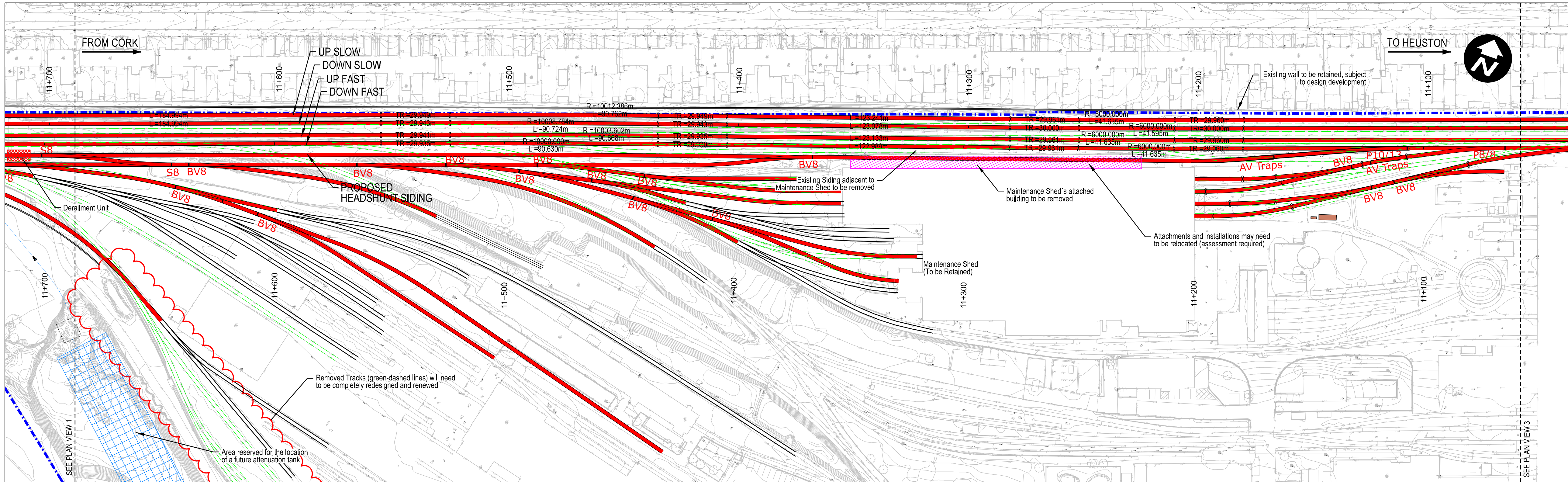
| | | |
|--|-------------|--------|
| Project Title | | |
| DART + SOUTH WEST | | |
| Drawing Title | | |
| KHYBER PASS FOOTBRIDGE (OBC5) BRIDGE DECK ELEVATION | | |
| Drawing File Name | | Status |
| DP-04-23-DWG-ST-TTA-57152 | Version v01 | S3 |

DO NOT SCALE USE FIGURED DIMENSIONS ONLY

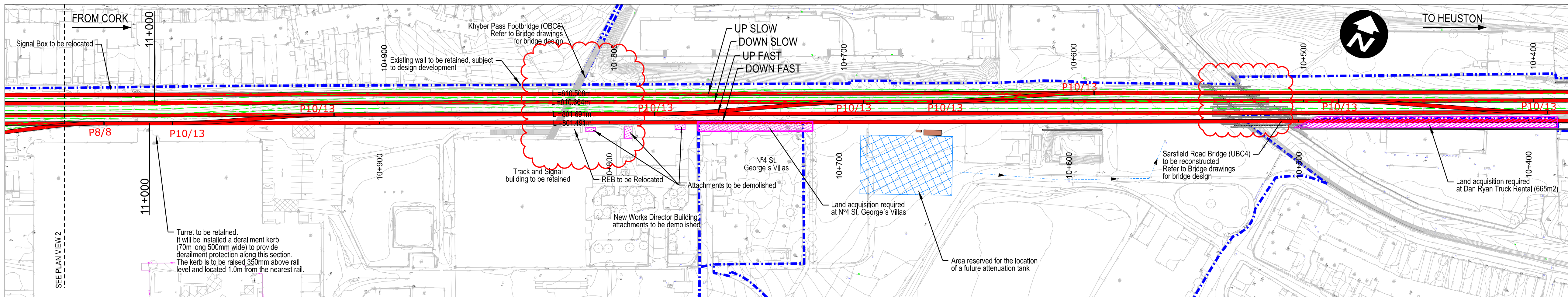




Plan View 1
Plan Scale 1:1000



Plan Scale 1:1000



Plan Scale 1:1000

Legend:

- Renewed Track / Slewed Track
- Existing Track to be Retained (Main Lines)
- Existing Track to be Retained (Not Main Lines)
- Existing Track to be Removed
- IÉ Property Boundary
- Proposed Retaining Wall
- Type of Turnout
- Attenuation Tank
- Low Voltage/Telecommunications/Signalling cabinets
- Indicative area of land acquisition required, based on available topographic survey information but not considering actual property boundary limits

- Design is based on topographical survey QT-94577-Dart-Southwest Section_01 to 10 (DWG format) in ITM coordinates.
- Slow tracks to be electrified.

NOTE:

INFORMATION IS PRESENTED FOR PUBLIC CONSULTATION NO.2

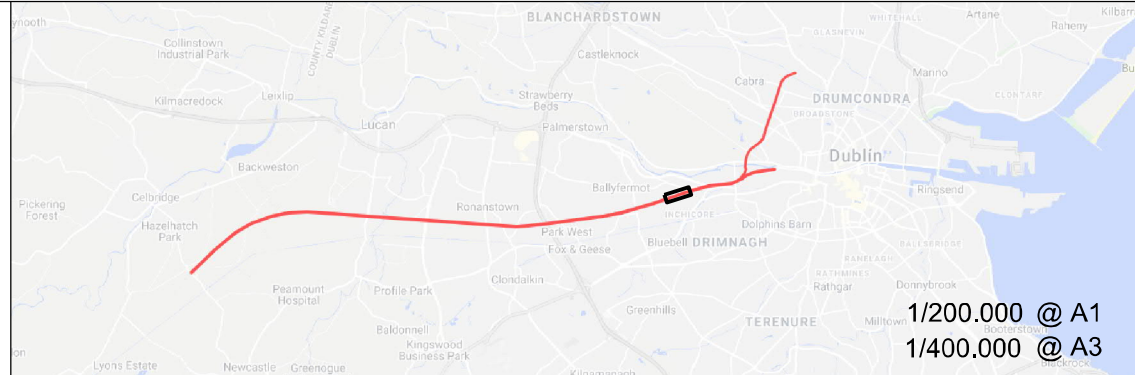
NOT ALL DESIGN DETAIL OR CONSTRUCTION RELATED DETAIL ARE KNOWN AT THIS TIME. E.G. SUBSTATION LOCATIONS, CONSTRUCTION COMPOUNDS, TEMPORARY BRIDGE REQUIREMENTS, TEMPORARY UTILITY DIVERSIONS AND OTHER ELEMENTS

POTENTIAL INTERFERENCE WITH PROPERTY RIGHTS IS BASED ON THE LEVEL OF INFORMATION AND DESIGN AVAILABLE AT THIS TIME. FURTHER WORK INCLUDING DETAILED DESIGN AND TECHNICAL AND CONSTRUCTION RELATED SOLUTIONS WILL SEEK TO MINIMISE POTENTIAL INTERFERENCE WITH PROPERTY RIGHTS

© Irish Rail (2020). This drawing is confidential and the copyright in it is owned by Irish Rail. This drawing must not be either loaned, copied or otherwise reproduced in whole or in part or used for any purpose without the prior permission of Irish Rail.

© Ordnance Survey Ireland and government of Ireland. All O.S. Data used for plans are printed under: "Copyright Ordnance Survey Ireland" Survey No. 0039720, (OSI Aerial Data or OSI Lidar Data) & Survey No. 2020/OSI_NMA_180 (OSI Vector Data).

All elevations are in metres and relate to OSI Geoid Model (OSGM02) Mean Head as defined by existing Project Control. All Co-ordinates are in Irish Transverse Mercator Grid (ITM) as defined by OSI active GPS station Tallaght College (TLLG).



| Rev | Date | Dm | Chk'd | App'd | Description |
|-----|----------|-----|-------|-------|----------------------------------|
| v01 | 21/09/21 | CDM | JYM | PR | ISSUED FOR PUBLIC CONSULTATION 2 |

Client

Iarnród Éireann
Irish Rail

Date

Scale 1:1000 @ A1
1:2000 @ A3

Project Code

Issuer

ATK

Engineering Designer

ATKINS
Member of the SNC-Lavalin Group

Supported by:

rps

Drawn

Checked

Approved

PR

QMS Code

Project Title

DART + SOUTH WEST

Drawing Title

INCHICORE WORKS AND KHYBER PASS FOOTBRIDGE (OBC5) TRACK PLAN LAYOUT

Drawing File Name

DP-04-23-DWG-PW-TTA-56990

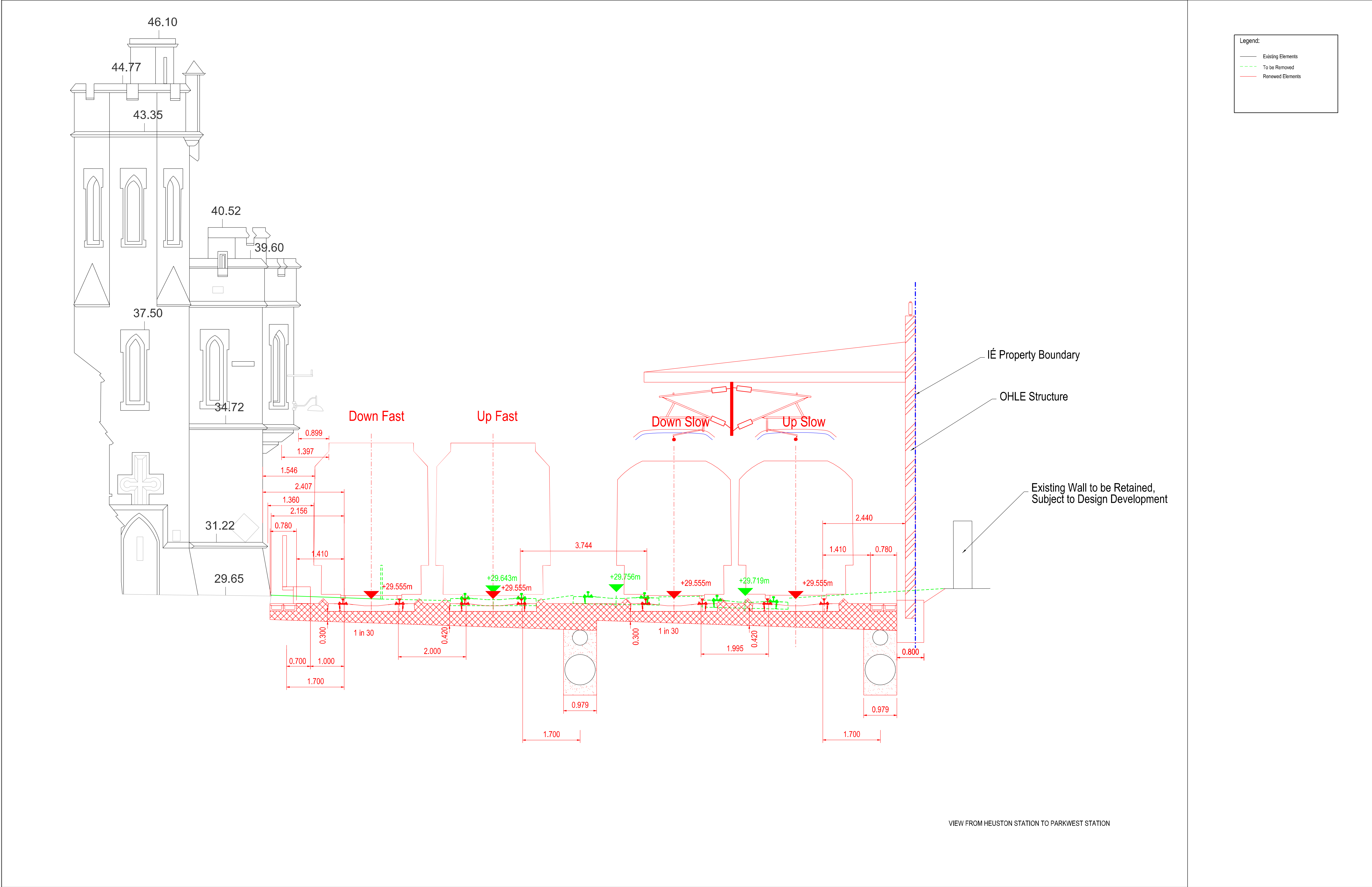
Version

v01

Status

S3

DO NOT SCALE USE FIGURED DIMENSIONS ONLY

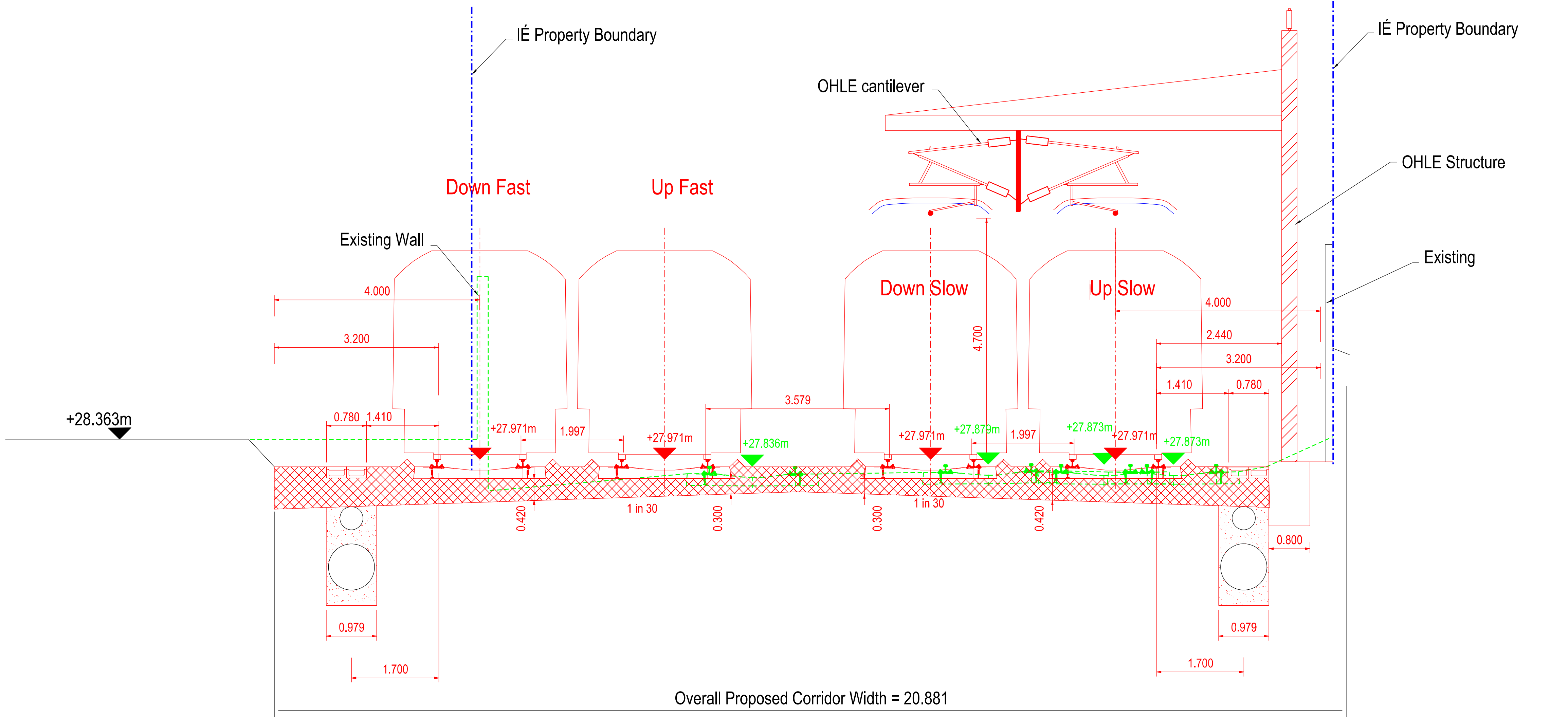


Legend:

Existing Elements

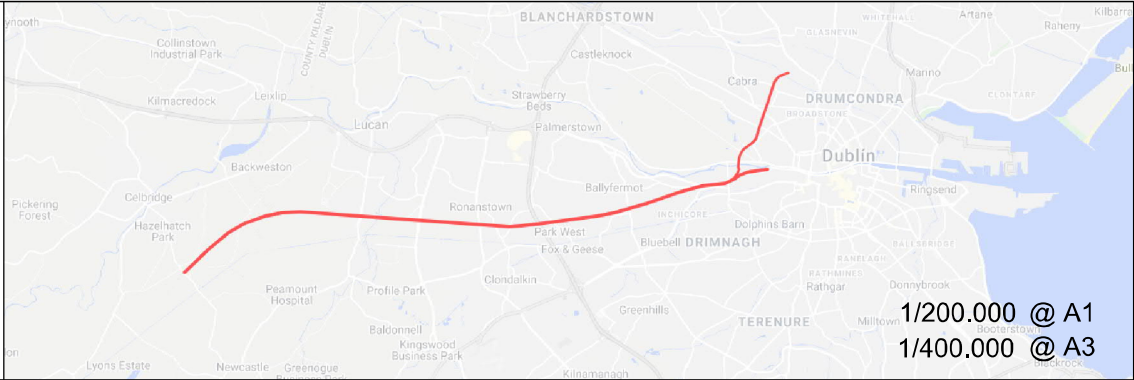
To be Removed

Renewed Elements



VIEW FROM HEUSTON STATION TO PARKWEST STATION

© Irish Rail (2020). This drawing is confidential and the copyright in it is owned by Irish Rail. This drawing must not be either loaned, copied or otherwise reproduced in whole or in part or used for any purpose without the prior permission of Irish Rail.
© Ordnance Survey Ireland and government of Ireland. All O.S. Data used for plans are printed under: "Copyright Ordnance Survey Ireland" Survey No. 0039720, (OSi Aerial Data or OSi Lidar Data) & Survey No. 2020/OSi_NMA_180 (OSi Vector Data).
All elevations are in metres and relate to OSi Geoid Model (OSGM02) Mean Head as defined by existing Project Control.
All Co-ordinates are in Irish Transverse Mercator Grid (ITM) as defined by OSi active GPS station Tallaght College (TLLG).



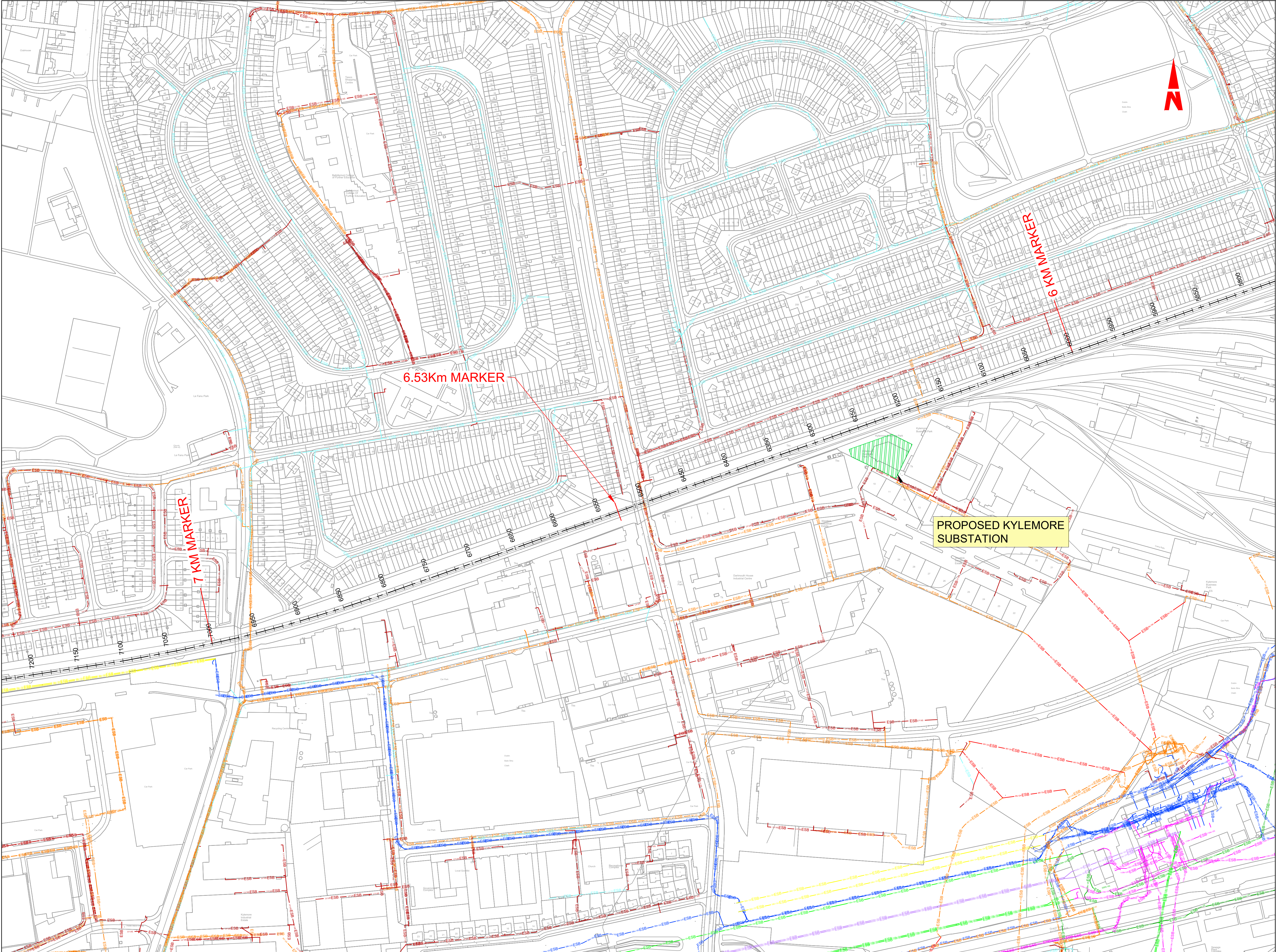
| Rev | Date | Dm | Chk'd | App'd | Description |
|-----|----------|-----|-------|-------|----------------------------------|
| | | | | | |
| | | | | | |
| | | | | | |
| | | | | | |
| v01 | 21/09/21 | CMS | JYM | PR | ISSUED FOR PUBLIC CONSULTATION 2 |

| | |
|--------------|-------------------------------|
| Client | |
| | |
| Date | Scale 1/50 @ A1 1/100 @ A3 |
| Project Code | Issuer ATK |

| | |
|----------------------|-------------|
| Engineering Designer | |
| Supported by: | |
| Drawn CMS | Checked JYM |
| Approved PR | |
| QMS Code | |

| | |
|--|---------------------------|
| Project Title | |
| DART + SOUTH WEST | |
| Drawing Title | |
| INCHICORE WORKS AND KHYBER PASS (OBC5) CROSS SECTION @Ch 10+751 | |
| Drawing File Name | DP-04-23-DWG-PW-TTA-56998 |
| Version v01 | Status S3 |

DO NOT SCALE USE FIGURED DIMENSIONS ONLY



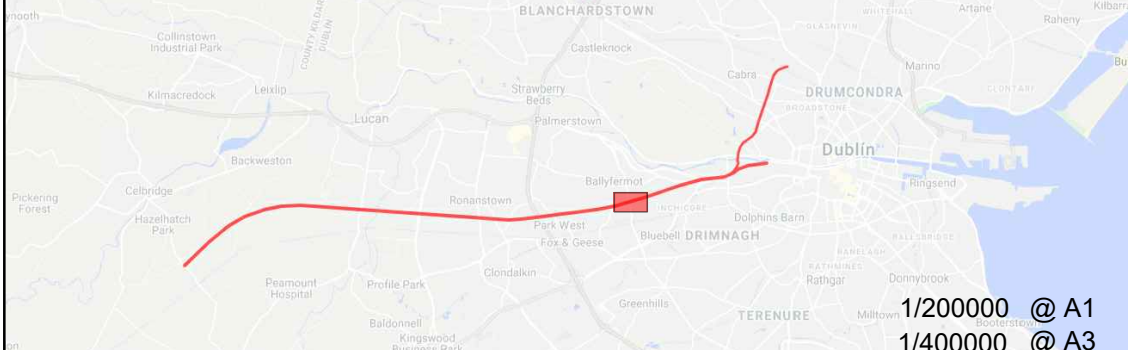
- LEGEND :
- PROPOSED SUBSTATION
 - 220kV NETWORK UNDERGROUND CABLE
 - 220kV NETWORK OVERHEAD CABLE
 - 110kV NETWORK UNDERGROUND CABLE
 - 110kV NETWORK OVERHEAD CABLE
 - 38kV NETWORK UNDERGROUND CABLE
 - 38kV NETWORK OVERHEAD CABLE
 - MV NETWORK UNDERGROUND CABLE
 - MV NETWORK OVERHEAD CABLE
 - LV NETWORK UNDERGROUND CABLE
 - LV NETWORK OVERHEAD LINE

© Irish Rail (2021). This drawing is confidential and the copyright in it is owned by Irish Rail. This drawing must not be either loaned, copied or otherwise reproduced in whole or in part or used for any purpose without the prior permission of Irish Rail.

© Ordnance Survey Ireland and government of Ireland. All O.S. Data used for plans are printed under: "Copyright Ordnance Survey Ireland" Survey No. 0039721. (OSi Aerial Data or OSi Lidar Data) & Survey No. 2020/OSi_NMA_180 (OSi Vector Data).

All elevations are in metres and relate to OSi Geoid Model (OSGM02) Mean Head as defined by existing Project Control.

All Co-ordinates are in Irish Transverse Mercator Grid (ITM) as defined by OSi active GPS station Tallaght College (TLLG).



| Rev | Date | Drm | Chk'd | App'd | Description |
|-----|----------|-----|-------|-------|----------------------------------|
| V01 | 28.10.21 | DB | AB | DM | ISSUED FOR PUBLIC CONSULTATION 2 |

Client

Date 12.07.21

Project Code 5199586

Scale 1:2000 @ A1
1:4000 @ A3

Issued by ATK

Engineering Designer

ATKINS

Supported by **TYPSPA** and **rps**

Member of the SNC-Lavalin Group

| | | |
|----------|------------|-------------|
| Drawn DB | Checked AB | Approved DM |
|----------|------------|-------------|

QMS Code

| | | | |
|-------------------|---|---------|-----|
| Project Title | DART + SOUTH WEST | | |
| Drawing Title | KYLEMORE IE PROPOSED SUBSTATION LOCATION | | |
| Drawing File Name | DP-04-23-DWG-EL-TTA-09422 | Version | V01 |
| Status | S3 | | |

DO NOT SCALE USE FIGURED DIMENSIONS ONLY