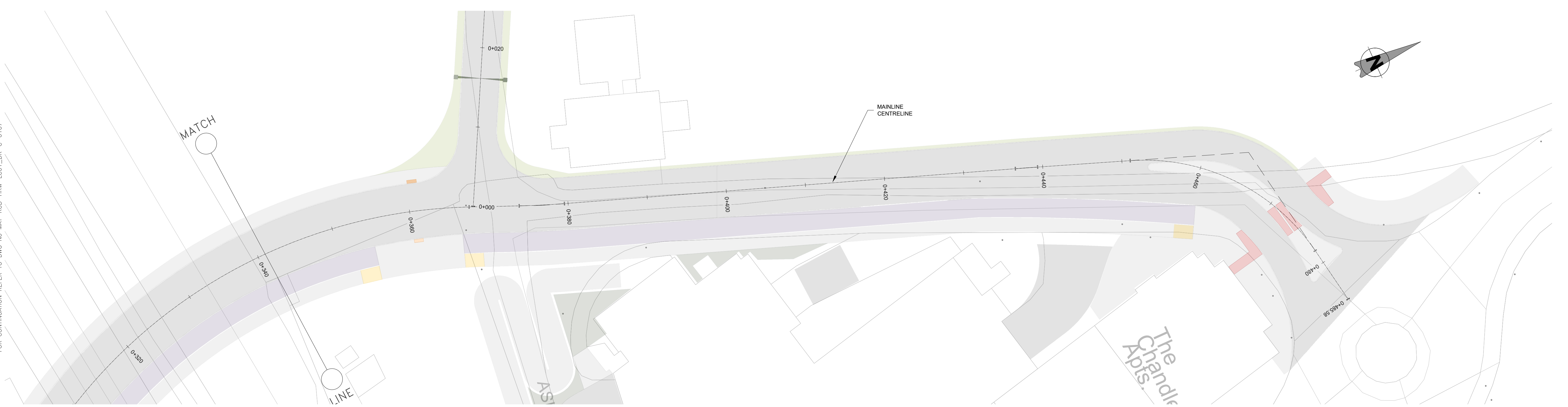
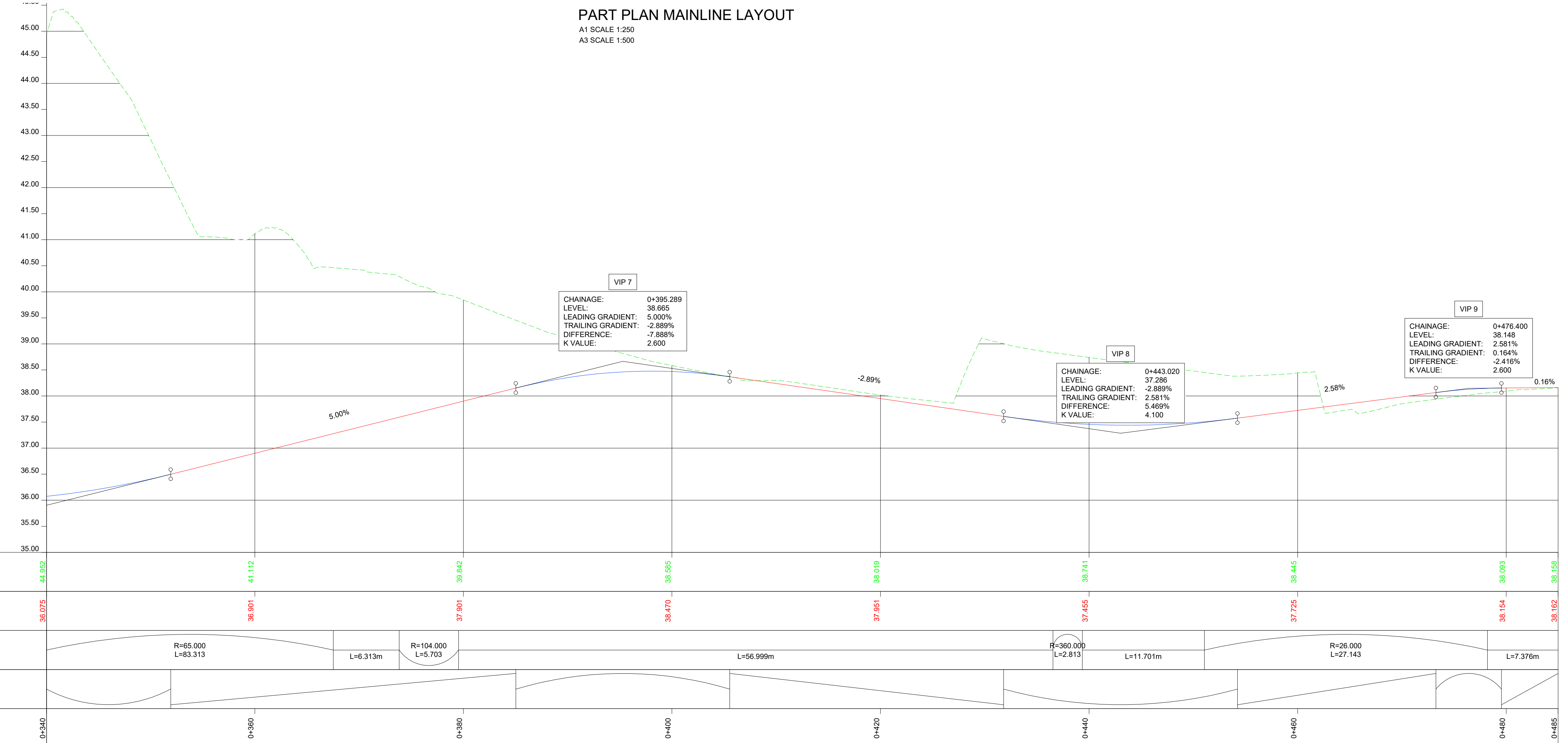


FOR CONTINUATION REFER TO DWG No MAY-ROD-HRW-LC01\_DR-C-0107

FOR CONTINUATION REFER TO DWG No MAY-ROD-HRW-LC01\_DR-C-0107



**PART PLAN MAINLINE LAYOUT**  
 A1 SCALE 1:250  
 A3 SCALE 1:500



**PART CL MAINLINE PROPOSED PROFILE**  
 A1 SCALE 1:250 HORIZONTAL  
 A1 SCALE 1:50 VERTICAL

**LEGEND:**  
 - - - - - PROPOSED ROAD CENTRELINE PROFILE  
 - - - - - EXISTING GROUND ALONG ROAD CENTRELINE

V 01	May 2021	PUBLIC CONSULTATION	TK	TL	MK
REV	DATE	DESCRIPTION	PRODUCED BY	REVIEWED BY	APPROVED BY
<small>© Irish Rail (2021). This drawing is confidential and the copyright in it is owned by Irish Rail. This drawing may not be copied, reproduced or otherwise used in whole or in part without the prior permission of Irish Rail.        © Ordnance Survey Ireland and Government of Ireland. All O.S. data used for plans are printed under "Copyright Ordnance Survey Ireland".        Survey No. 0039721 (OSi Aerial Data or OSi Lidar Data) &amp; Survey No. 2021OSI_NMA_180 (OSi Vector Data).        All elevations are in metres and relate to OSi Geoid Model (OSGM02) Mean Head as defined by existing Project Control.        All Co-ordinates are in Irish Transverse Mercator Grid (ITM) as defined by OSi active GPS station Tallaght College (TLTG).</small>					

Client: **Tionscald Éireann Project Ireland 2040**, **NTA** (Údarás Náisiúnta Iompair National Transport Authority), **Iarnród Éireann Irish Rail**

Consultant: **IDOM**, **G3**, **PROD** (ROUGHAN & O'DONOVAN)

Project: **DART+ West**

Drawing Title: **OPTIONS SELECTION - LC01: ASHTOWN - OPTION 2 ROAD ALIGNMENT PLAN AND PROFILE SHEET 3 OF 3**

Scale: 1:250 @ A1

Drawing Number: **MAY ROD HRW LC01 DR C 0110 B**

Date: May 2021 | Job No: P/101086 | Status: S4 - Suitable for Acceptance | Rev: V 01 | Sheet: 03 of 03