

LEGEND :-

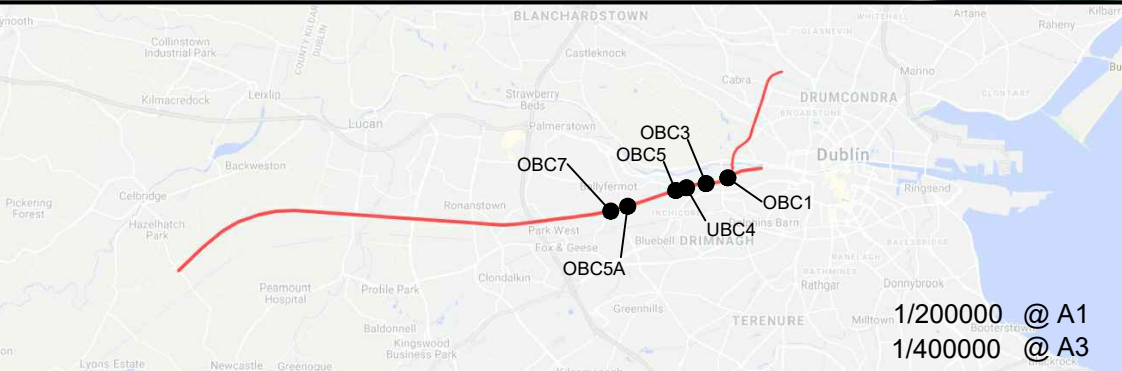
----- IRISH RAIL PROPERTY
BOUNDARY

© Irish Rail (2021). This drawing is confidential and the copyright in it is owned by Irish Rail. This drawing must not be either loaned, copied or otherwise reproduced in whole or in part or used for any purpose without the prior permission of Irish Rail.

© Ordnance Survey Ireland and government of Ireland. All O.S. Data used for plans are printed under: "Copyright Ordnance Survey Ireland" Survey No. 0039721. (OSi Aerial Data or OSi Lidar Data) & Survey No. 2020/OSi_NMA_180 (OSi Vector Data).

All elevations are in metres and relate to OSi Geoid Model (OSGM02) Mean Head as defined by existing Project Control.

All Co-ordinates are in Irish Transverse Mercator Grid (ITM) as defined by OSi active GPS station Tallaght College (TLLG).



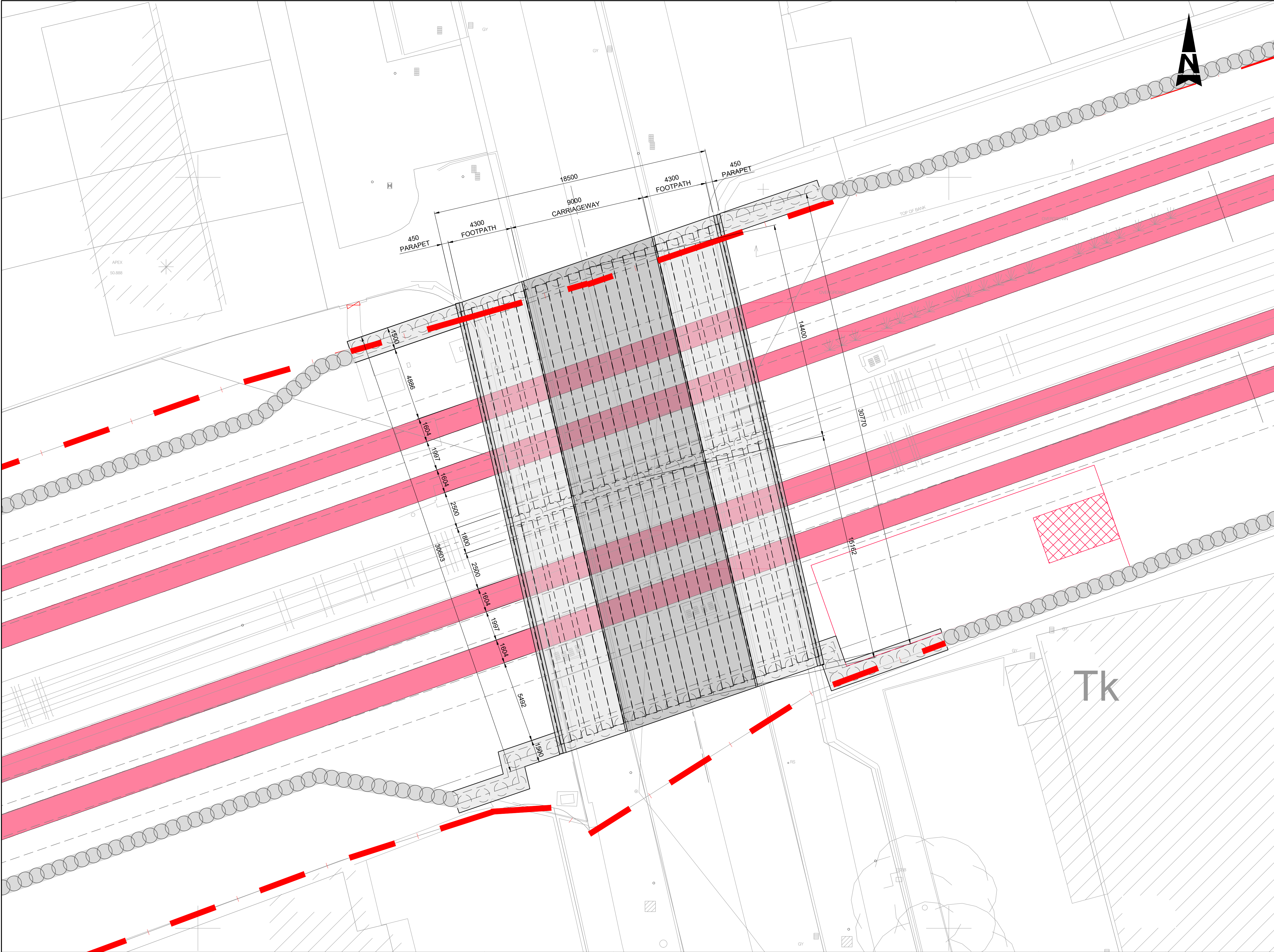
Rev	Date	Dm	Chk'd	App'd	Description
v01	28/10/21	AOS	RM	AG	ISSUED FOR PUBLIC CONSULTATION 2

Client	
Date	06/09/21
Project Code	5199586

Engineering Designer	
Supported by:	
Drawn	AOS
Checked	RM
Approved	AG
QMS Code	

Project Title	
DART + SOUTH WEST	
Drawing Title	
KYLEMORE ROAD BRIDGE (OBC5A) GENERAL ARRANGEMENT	
Drawing File Name	DP-04-23-DWG-ST-TTA-62120
Version	v01
Status	S3

DO NOT SCALE USE FIGURED DIMENSIONS ONLY



LEGEND :-

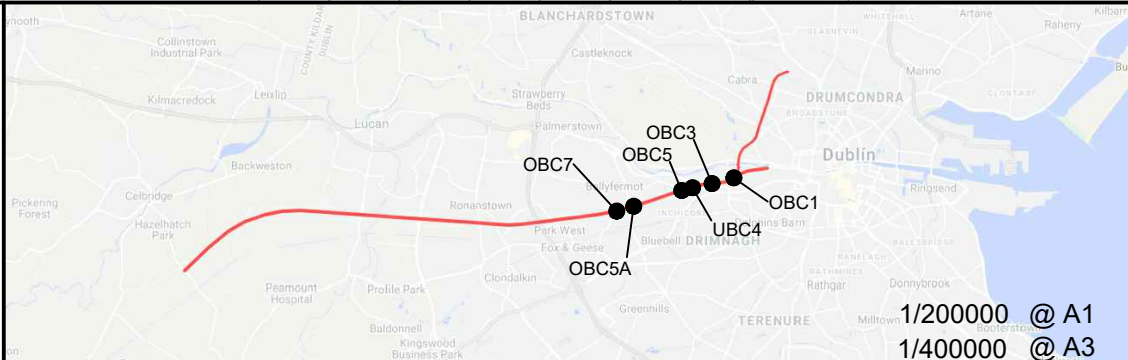
IRISH RAIL PROPERTY
BOUNDARY

© Irish Rail (2021). This drawing is confidential and the copyright in it is owned by Irish Rail. This drawing must not be either loaned, copied or otherwise reproduced in whole or in part or used for any purpose without the prior permission of Irish Rail.

© Ordnance Survey Ireland and government of Ireland. All O.S. Data used for plans are printed under: "Copyright Ordnance Survey Ireland" Survey No. 0039721. (OSi Aerial Data or OSi Lidar Data) & Survey No. 2020/OSI_NMA_180 (OSi Vector Data).

All elevations are in metres and relate to OSi Geoid Model (OSGM02) Mean Head as defined by existing Project Control.

All Co-ordinates are in Irish Transverse Mercator Grid (ITM) as defined by OSi active GPS station Tallaght College (TLLG).



DART+
South West



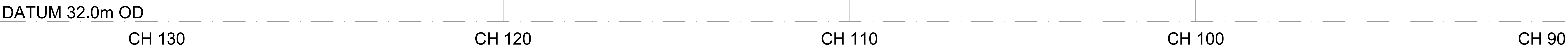
Rev	Date	Dm	Chk'd	App'd	Description
v01	28/10/21	AOS	RM	AG	ISSUED FOR PUBLIC CONSULTATION 2

Client	
Iarnród Éireann Irish Rail	
Date	06/09/21
Scale	1:200 @ A1 1:400 @ A3
Project Code	5199586
Issuer	TTA

Engineering Designer	
ATKINS Member of the SNC-Lavalin Group	
Supported by:	
rps	
Drawn	AOS
Checked	RM
Approved	AG
QMS Code	

Project Title	
DART + SOUTH WEST	
Drawing Title	
KYLEMORE ROAD BRIDGE (OBC5A) BRIDGE DECK PLAN	
Drawing File Name	
DP-04-23-DWG-ST-TTA-62121	
Version	v01
Status	S3

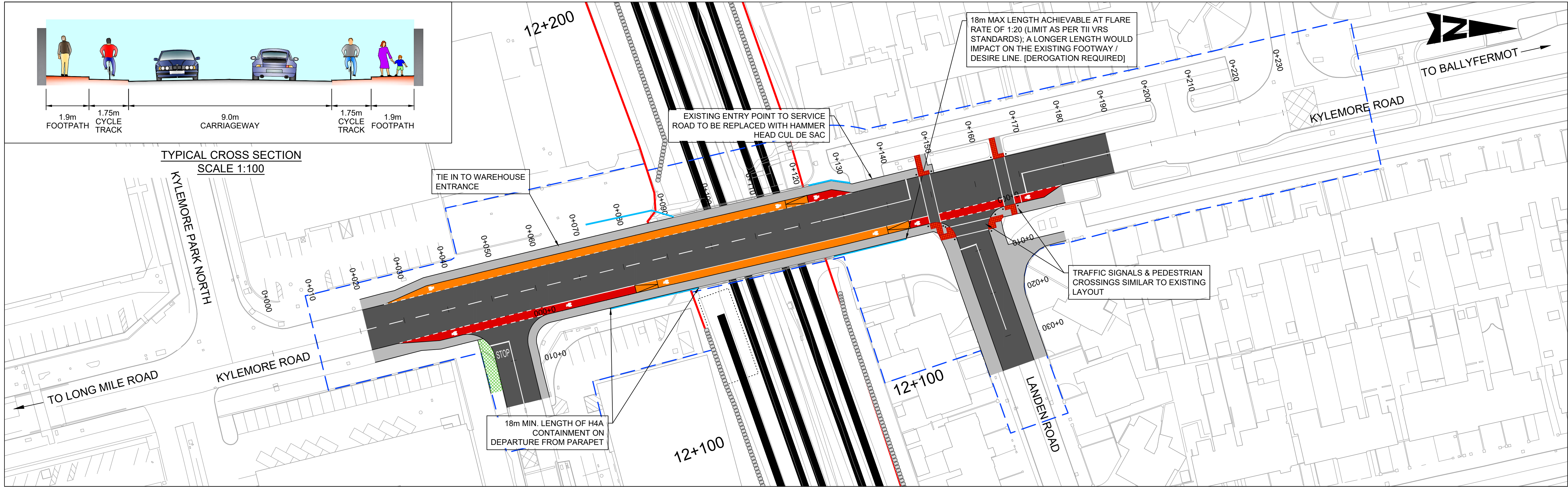
DO NOT SCALE USE FIGURED DIMENSIONS ONLY



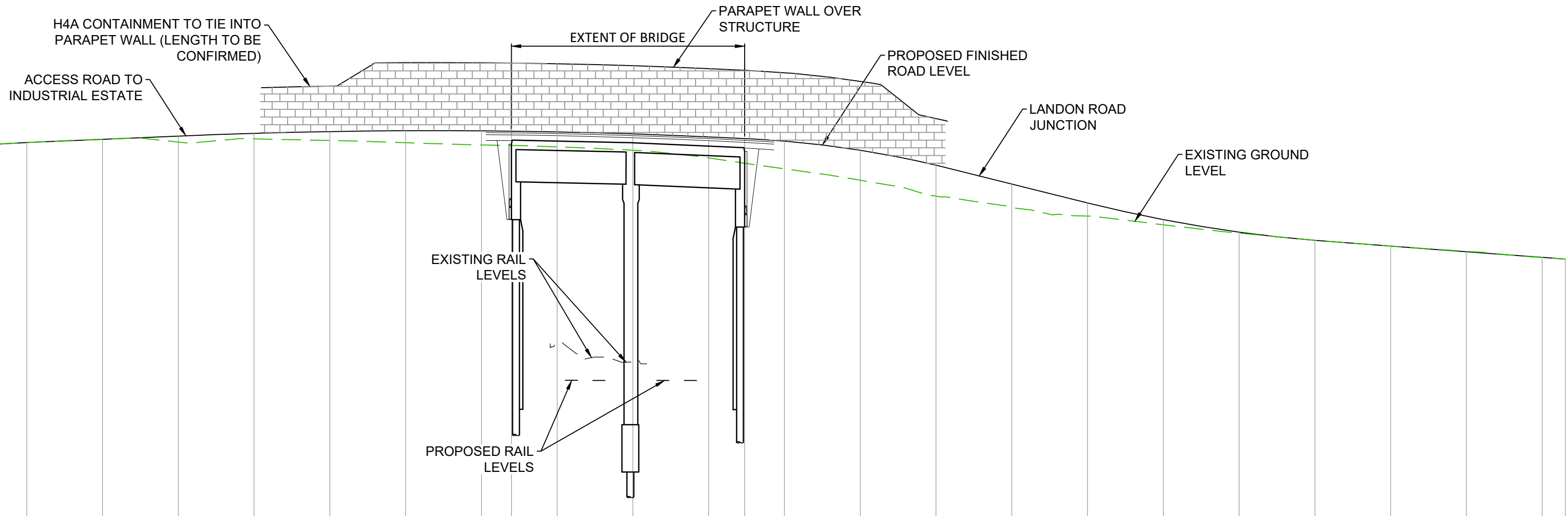
Scale A1 1:100
Scale at A3 1:200

Scale A1 1:50
Scale at A3 1:100

DO NOT SCALE USE FIGURED DIMENSIONS ONLY



PLAN - KYLEMORE ROAD - OVERBRIDGE
SCALE 1:500



DATUM = 34.00

PROPOSED LEVELS	43.670	43.761	43.865	43.974	44.060	44.144	44.216	44.263	44.285	44.282	44.274	44.254	44.201	44.123	44.077	44.011	43.770	43.376	42.878	42.378	41.938	41.610	41.392	41.240	41.090	40.943	40.898
EXISTING LEVELS	43.670	43.763	43.865	43.975	44.062	43.986	44.071	44.028	43.970	43.911	43.858	43.773	43.566	43.279	42.980	42.561	42.261	42.033	41.801	41.582	41.391	41.240	41.103	40.937	40.898		
LEVEL DIFFERENCE		-0.001	0.001	-0.001	-0.003	0.158	0.146	0.236	0.316	0.372	0.396	0.429	0.558	0.732	0.790	0.814	0.617	0.346	0.138	0.028	0.000	-0.001	-0.013	0.006			
HORIZONTAL	D		D=40.626				D=36.726				D=36.516				R	D=17.027		D=53.434				D		D=22.180			
VERTICAL	P	R	R	P=0.846%	L=18.669	R=4000.000 L=76.293	R=650.000 L=25.601	L=17.746	R=900.000 L=31.289	R=50585.900 L=32.159																	
CHAINAGE	0+000	10+000	20+000	30+000	40+000	50+000	60+000	70+000	80+000	90+000	100+000	110+000	120+000	130+000	140+000	150+000	160+000	170+000	180+000	190+000	200+000	210+000	220+000	230+000	233.045		

LONGITUDINAL SECTION - KYLEMORE ROAD BRIDGE (OBC5A)
SCALE 1:500 Horizontal, 1:100 Vertical

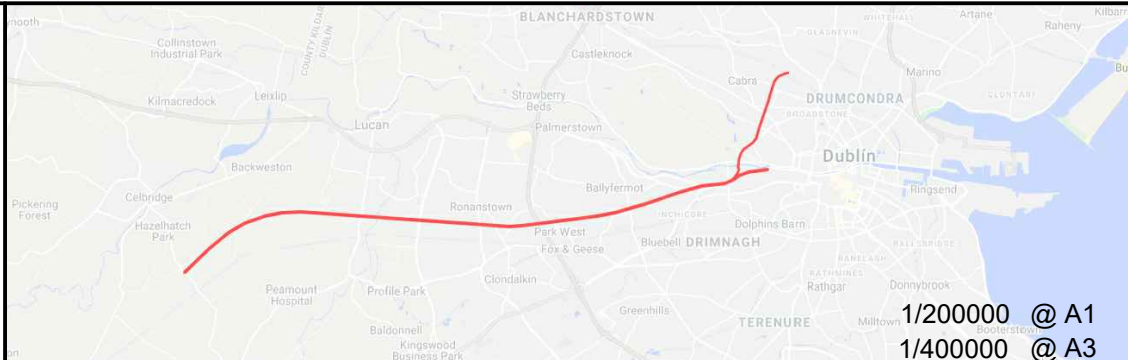
- LEGEND:
- IRISH RAIL PROPERTY BOUNDARY
 - H4A CONTAINMENT
 - TEMPORARY WORKS BOUNDARY
 - CARRIAGEWAY
 - PROPOSED FOOTPATH
 - PROPOSED SHARED SPACE
 - PROPOSED RAISED CYCLE TRACK / LANE
 - PROPOSED ON ROAD CYCLE LANE
 - PROPOSED TACTILE PAVING (CONTROLLED)
 - PROPOSED TACTILE PAVING (UNCONTROLLED)
 - PROPOSED GRASS VERGE
 - EXISTING GRASS VERGE TO BE RETAINED
- NOTES:
- DO NOT SCALE FROM DRAWING.

© Irish Rail (2021). This drawing is confidential and the copyright in it is owned by Irish Rail. This drawing must not be either loaned, copied or otherwise reproduced in whole or in part or used for any purpose without the prior permission of Irish Rail.

© Ordnance Survey Ireland and government of Ireland. All O.S. Data used for plans are printed under: "Copyright Ordnance Survey Ireland" Survey No. 0039721. (OSi Aerial Data or OSi Lidar Data) & Survey No. 2020/OSi_NMA_180 (OSi Vector Data).

All elevations are in metres and relate to OSi Geoid Model (OSGM02) Mean Head as defined by existing Project Control.

All Co-ordinates are in Irish Transverse Mercator Grid (ITM) as defined by OSi active GPS station Tallaght College (TLLG).



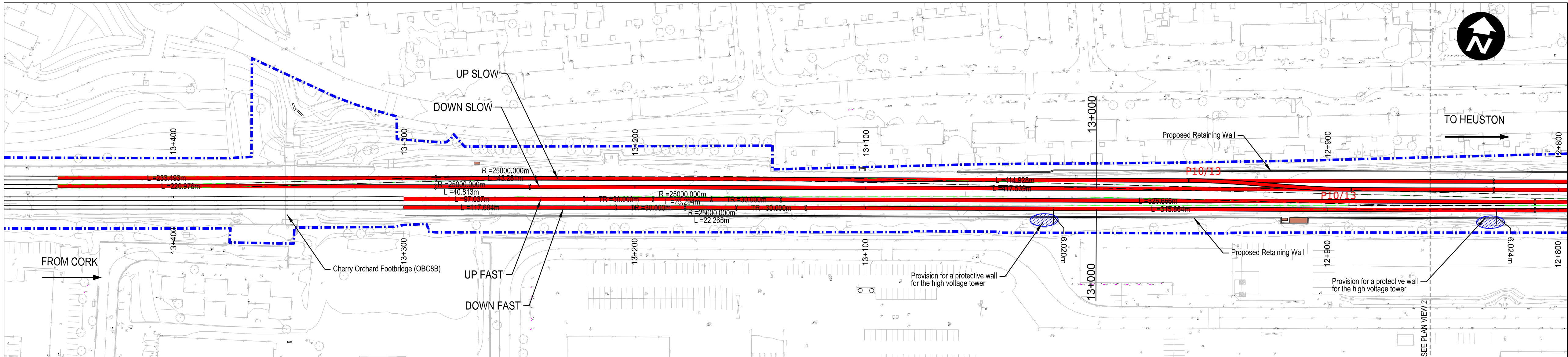
Rev	Date	Drm	Chk'd	App'd	Description
V01	28.10.21	DB	JX	DM	ISSUED FOR PUBLIC CONSULTATION 2

Client	
Iarnród Éireann Irish Rail	
Date	24.09.21
Project Code	5199586
Issue	ATK

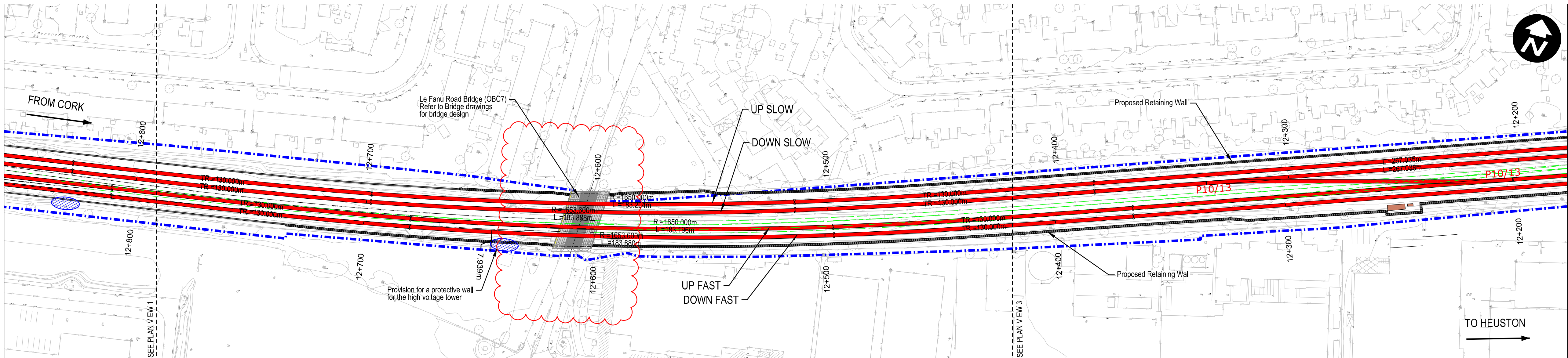
Engineering Designer	
ATKINS	
Supported by: rps	
Drawn	DB
Checked	JX
Approved	DM
QMS Code	

Project Title	
DART + SOUTH WEST	
Drawing Title	
KYLEMORE ROAD BRIDGE (OBC5A) ROAD - PLAN AND PROFILE	
Drawing File Name	DP-04-23-DWG-CV-TTA-61531
Version	V01
Status	S3

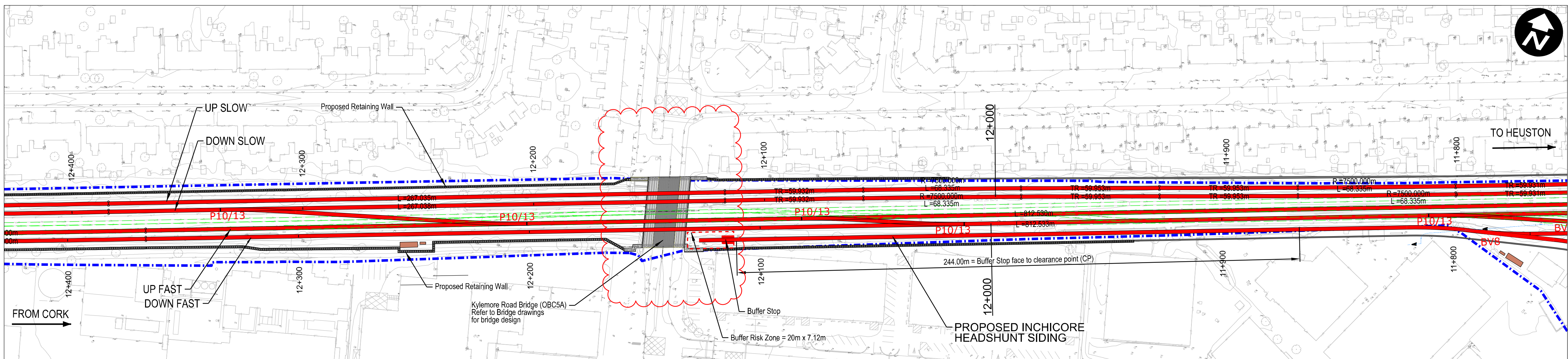
DO NOT SCALE USE FIGURED DIMENSIONS ONLY



Plan View 1
Plan Scale 1:1000



Plan View 2
Plan Scale 1:1000



Plan View 3
Plan Scale 1:1000

Legend:

- Renewed Track / Slewed Track
- Existing Track to be Retained (Main Lines)
- Existing Track to be Retained (Not Main Lines)
- Existing Track to be Removed
- IÉ Property Boundary
- Proposed Retaining Wall
- P8/8 Type of Turnout
- Low Voltage/Telecommunications/Signalling cabinets

- Design is based on topographical survey QT-94577-Dart-Southwest Section_01 to 10 (DWG format) in ITM coordinates.
- Slow tracks to be electrified.

NOTE:

INFORMATION IS PRESENTED FOR PUBLIC CONSULTATION NO. 2.

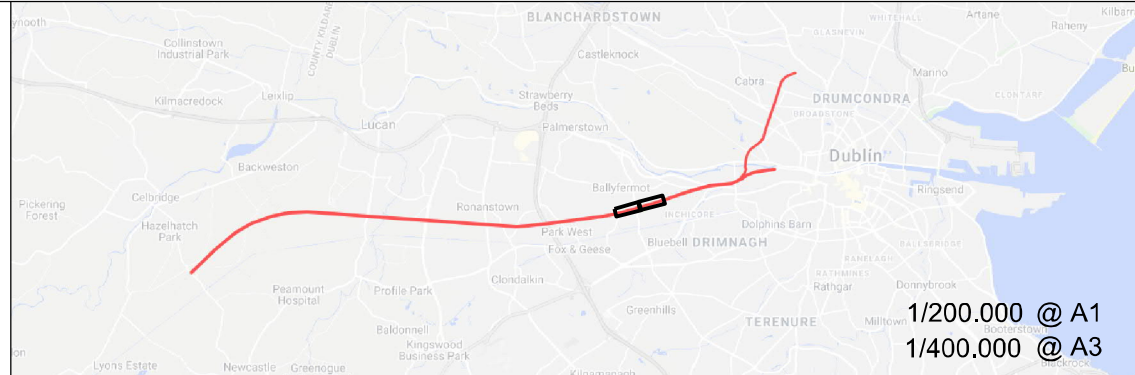
NOT ALL DESIGN DETAIL OR CONSTRUCTION RELATED DETAIL ARE KNOWN AT THIS TIME. E.G. SUBSTATION LOCATIONS, CONSTRUCTION COMPOUNDS, TEMPORARY BRIDGE REQUIREMENTS, TEMPORARY UTILITY DIVERSIONS AND OTHER ELEMENTS

POTENTIAL INTERFERENCE WITH PROPERTY RIGHTS IS BASED ON THE LEVEL OF INFORMATION AND DESIGN AVAILABLE AT THIS TIME. FURTHER WORK INCLUDING DETAILED DESIGN AND TECHNICAL AND CONSTRUCTION RELATED SOLUTIONS WILL SEEK TO MINIMISE POTENTIAL INTERFERENCE WITH PROPERTY RIGHTS

© Irish Rail (2020). This drawing is confidential and the copyright in it is owned by Irish Rail. This drawing must not be either loaned, copied or otherwise reproduced in whole or in part or used for any purpose without the prior permission of Irish Rail.

© Ordnance Survey Ireland and government of Ireland. All O.S. Data used for plans are printed under: "Copyright Ordnance Survey Ireland" Survey No. 0039720, (OSI Aerial Data or OSI Lidar Data) & Survey No. 2020/OSI_NMA_180 (OSI Vector Data).

All elevations are in metres and relate to OSI Geoid Model (OSGM02) Mean Head as defined by existing Project Control. All Co-ordinates are in Irish Transverse Mercator Grid (ITM) as defined by OSI active GPS station Tallaght College (TLLG).



Rev	Date	Dm	Chk'd	App'd	Description
v01	21/09/21	CDM	JYM	PR	ISSUED FOR PUBLIC CONSULTATION 2

Client

Iarnród Éireann
Irish Rail

Date

Scale 1:1000 @ A1
1:2000 @ A3

Project Code

Issuer

ATK

Engineering Designer

ATKINS
Member of the SNC-Lavalin Group

Supported by:

rps

Drawn

Checked

Approved

CDM

JYM

PR

QMS Code

Project Title

DART + SOUTH WEST

Drawing Title

KYLEMORE ROAD BRIDGE (OBC5A) AND LE FANU ROAD BRIDGE (OBC7) TRACK PLAN LAYOUT

Drawing File Name

DP-04-23-DWG-PW-TTA-61990

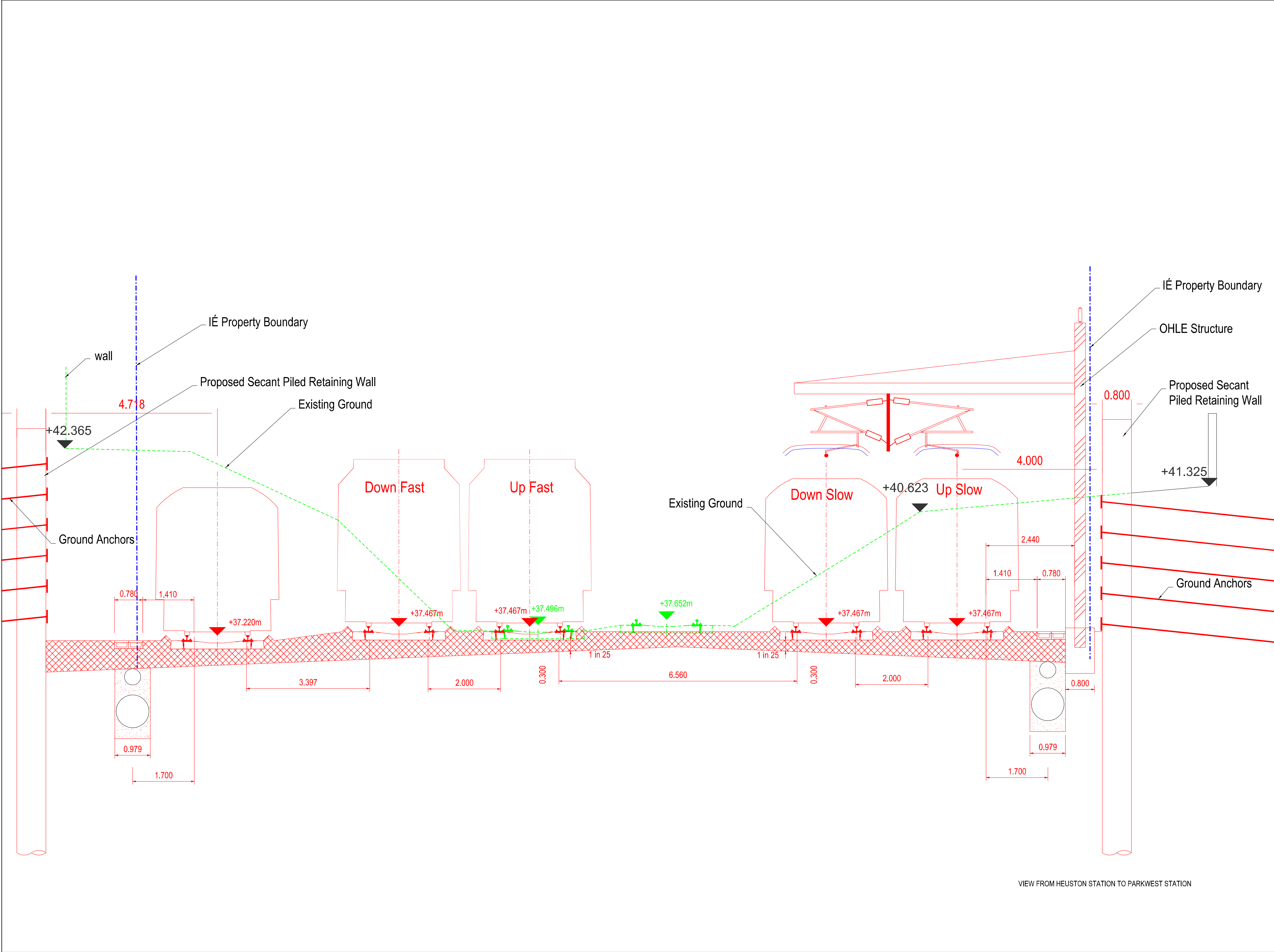
Version

v01

Status

S3

DO NOT SCALE USE FIGURED DIMENSIONS ONLY



Legend:

Existing Elements

To be Removed

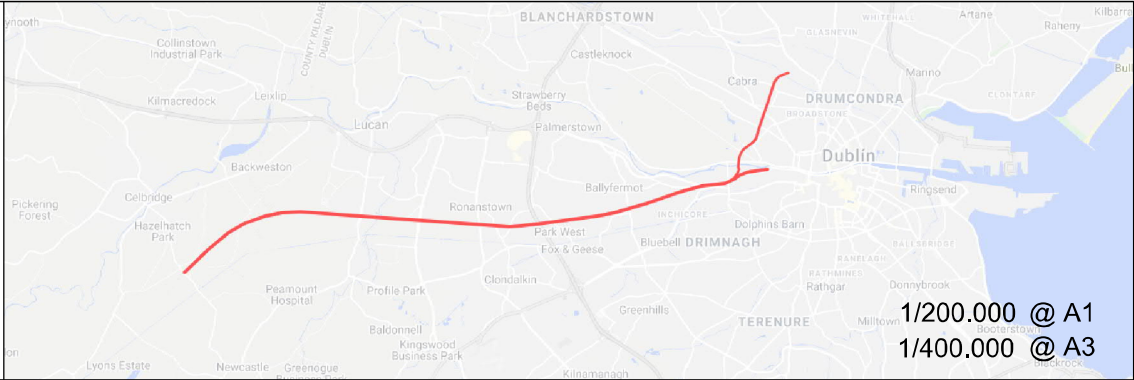
Renewed Elements

© Irish Rail (2020). This drawing is confidential and the copyright in it is owned by Irish Rail. This drawing must not be either loaned, copied or otherwise reproduced in whole or in part or used for any purpose without the prior permission of Irish Rail.

© Ordnance Survey Ireland and government of Ireland. All O.S. Data used for plans are printed under: "Copyright Ordnance Survey Ireland" Survey No. 0039720, (OSi Aerial Data or OSi Lidar Data) & Survey No. 2020/OSi_NMA_180 (OSi Vector Data).

All elevations are in metres and relate to OSi Geoid Model (OSGM02) Mean Head as defined by existing Project Control.

All Co-ordinates are in Irish Transverse Mercator Grid (ITM) as defined by OSi active GPS station Tallaght College (TLLG).



Rev	Date	Dm	Chk'd	App'd	Description
v01	21/09/21	CMS	JYM	PR	ISSUED FOR PUBLIC CONSULTATION 2

Client

Iarnród Éireann
Irish Rail

Date

Scale

1/50 @ A1
1/100 @ A3

Project Code

Issuer

ATK

Engineering Designer

ATKINS
Member of the SNC-Lavalin Group

Supported by:

TYPESA
rps

Drawn

Checked

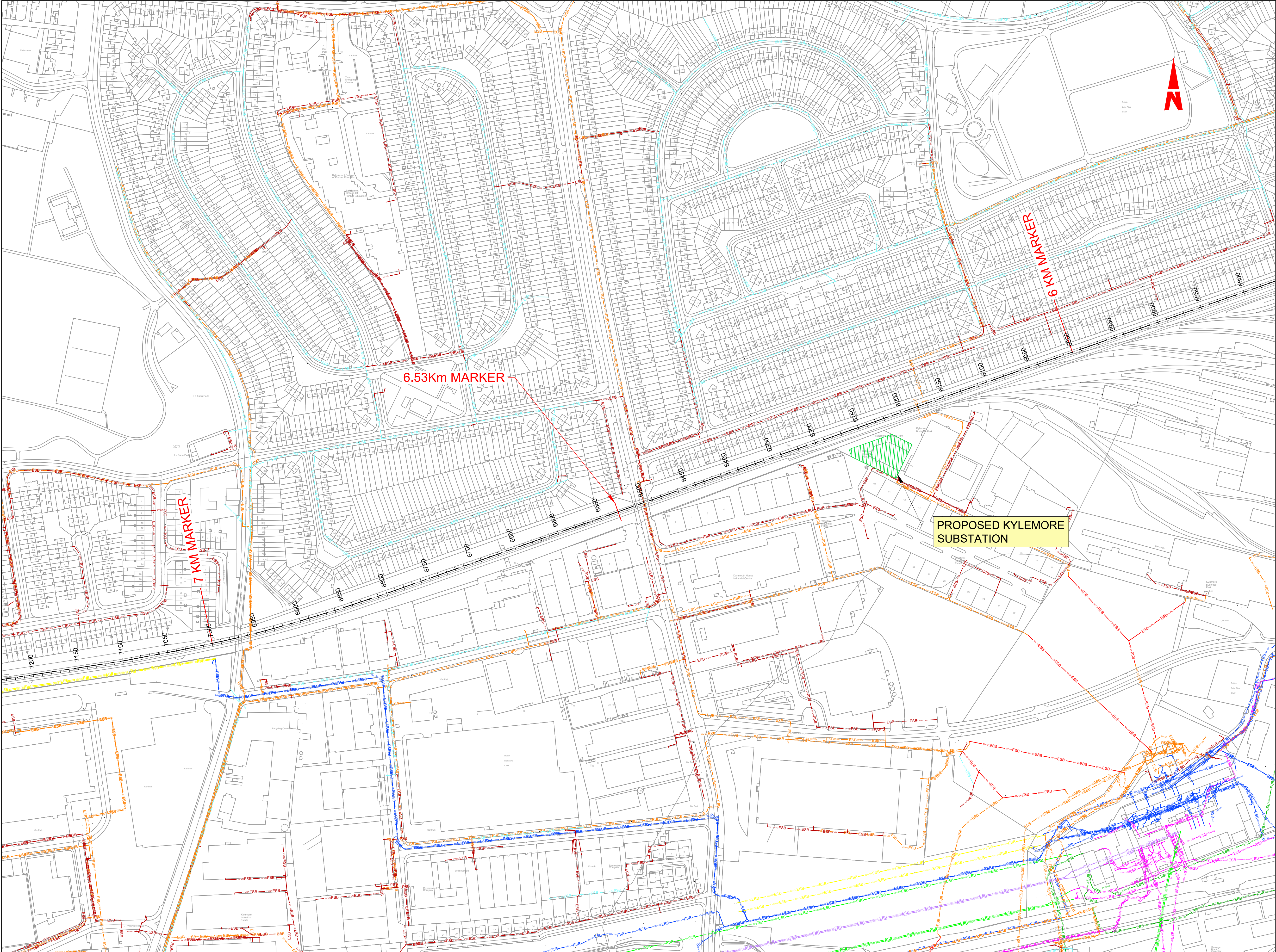
Approved

CMS
JYM
PR

QMS Code

Project Title	DART + SOUTH WEST		
Drawing Title	KYLEMORE ROAD BRIDGE (OBC5A) AND LE FANU ROAD BRIDGE (OBC7) CROSS SECTION @Ch 12+030		
Drawing File Name	DP-04-23-DWG-PW-TTA-61991	Version v01	Status S3

DO NOT SCALE USE FIGURED DIMENSIONS ONLY



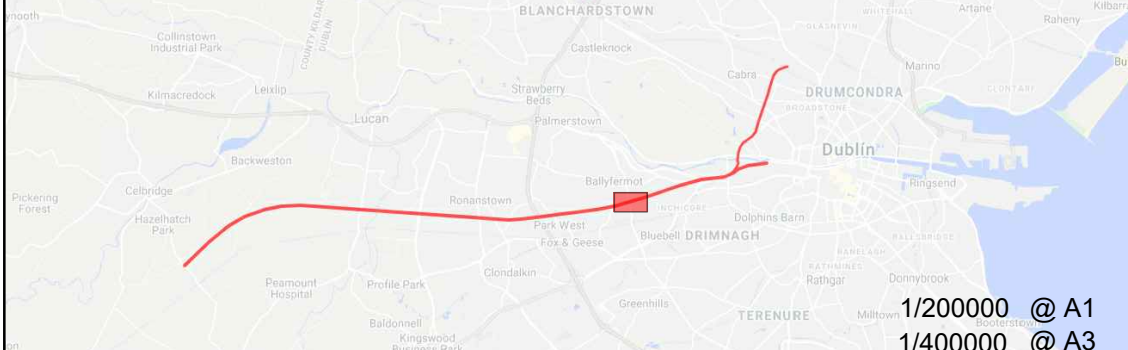
- LEGEND :
- PROPOSED SUBSTATION
 - 220kV NETWORK UNDERGROUND CABLE
 - 220kV NETWORK OVERHEAD CABLE
 - 110kV NETWORK UNDERGROUND CABLE
 - 110kV NETWORK OVERHEAD CABLE
 - 38kV NETWORK UNDERGROUND CABLE
 - 38kV NETWORK OVERHEAD CABLE
 - MV NETWORK UNDERGROUND CABLE
 - MV NETWORK OVERHEAD CABLE
 - LV NETWORK UNDERGROUND CABLE
 - LV NETWORK OVERHEAD LINE

© Irish Rail (2021). This drawing is confidential and the copyright in it is owned by Irish Rail. This drawing must not be either loaned, copied or otherwise reproduced in whole or in part or used for any purpose without the prior permission of Irish Rail.

© Ordnance Survey Ireland and government of Ireland. All O.S. Data used for plans are printed under: "Copyright Ordnance Survey Ireland" Survey No. 0039721. (OSi Aerial Data or OSi Lidar Data) & Survey No. 2020/OSi_NMA_180 (OSi Vector Data).

All elevations are in metres and relate to OSi Geoid Model (OSGM02) Mean Head as defined by existing Project Control.

All Co-ordinates are in Irish Transverse Mercator Grid (ITM) as defined by OSi active GPS station Tallaght College (TLLG).



Rev	Date	Drm	Chk'd	App'd	Description
V01	28.10.21	DB	AB	DM	ISSUED FOR PUBLIC CONSULTATION 2

larnród Éireann
Irish Rail

Client

Date 12.07.21

Scale 1:2000 @ A1
1:4000 @ A3

Project Code 5199586

Issuer ATK

Engineering Designer

Supported by:

Drawn DB

Checked AB

Approved DM

QMS Code

Project Title	DART + SOUTH WEST		
Drawing Title	KYLEMORE IE PROPOSED SUBSTATION LOCATION		
Drawing File Name	DP-04-23-DWG-EL-TTA-09422	Version V01	Status S3

DO NOT SCALE USE FIGURED DIMENSIONS ONLY

U:\5199586\6 dwgs-graphics\61 autocad\DP-04-23-DWG-EL-TTA-09421-09426.dwg