

LEGEND :-
IRISH RAIL PROPERTY
BOUNDARY

Preferred

© Irish Rail (2021). This drawing is confidential and the copyright in it is owned by Irish Rail. This drawing must not be either loaned, copied or otherwise reproduced in whole or in part or used for any purpose without the prior permission of Irish Rail.
© Ordnance Survey Ireland and government of Ireland. All O.S. Data used for plans are printed under: "Copyright Ordnance Survey Ireland" Survey No. 0039721, (OSi Aerial Data or OSi Lidar Data) & Survey No. 2020/OSi_NMA_180 (OSi Vector Data).
All elevations are in metres and relate to OSi Geoid Model (OSGM02) Main Head as defined by existing Project Control.
All Co-ordinates are in Irish Transverse Mercator Grid (ITM) as defined by OSi active GPS station Tallaght College (TLLG).



Rev	Date	Dm	Chk'd	App'd	Description
v01	21/04/21	AOS	RM	AG	FOR PUBLIC CONSULTATION No1

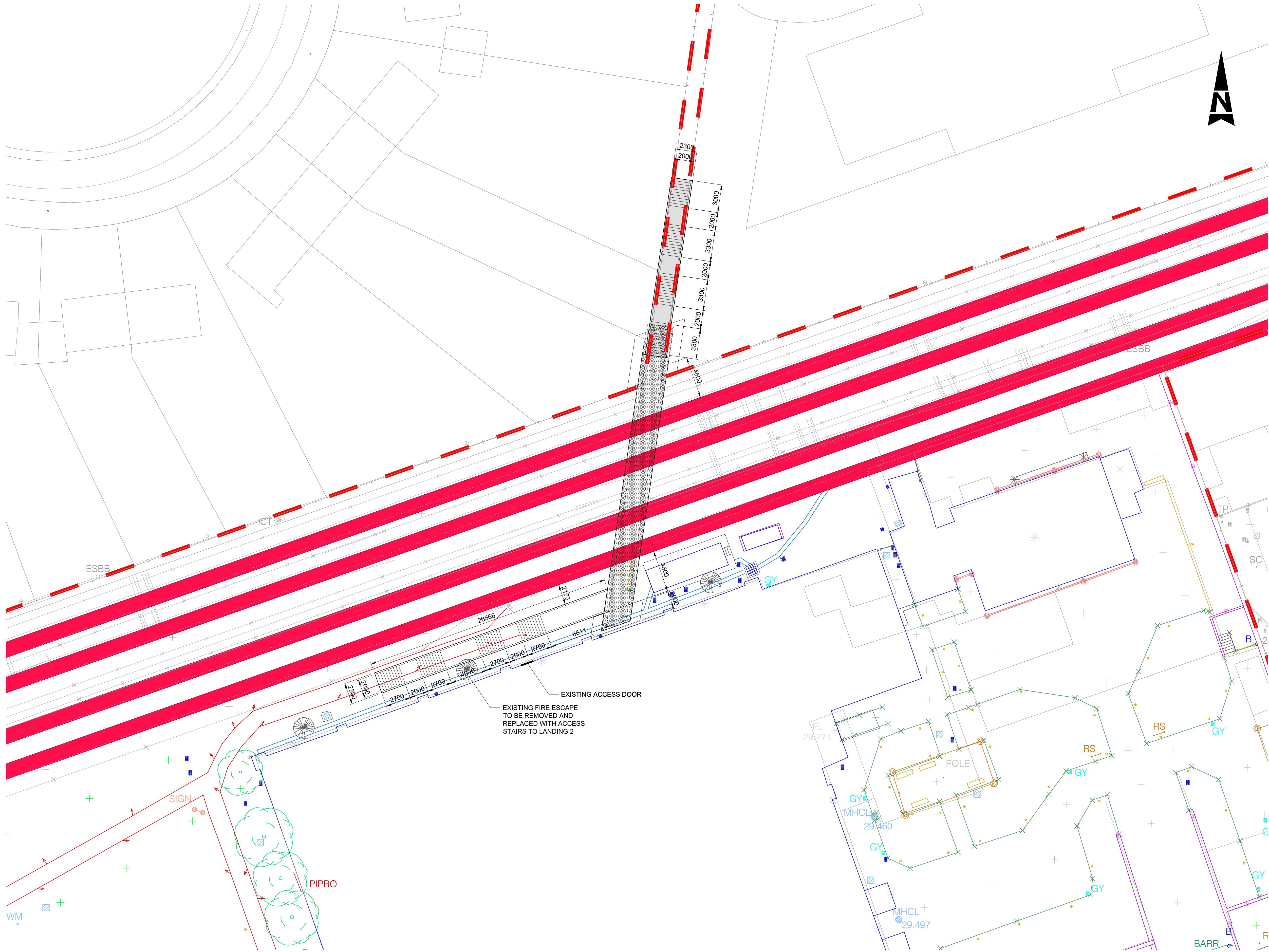
Client	
Iarnród Éireann Irish Rail	
Date	28/01/21
Scale	NTS @ A1 NTS @ A3
Project Code	5199586
Issuer	TTA

Engineering Designer	
ATKINS	
Supported by: TYPESA	
Drawn	AOS
Checked	RM
Approved	AG
QMS Code	

Project Title	
DART+ SOUTH WEST	
Drawing Title	
KHYBER PASS FOOTBRIDGE (OBC5) OPTION 3 - GENERAL ARRANGEMENT	
Drawing File Name	
DP-04-23-DWG-ST-TTA-55990	
Version	v01
Status	S3

DO NOT SCALE USE FIGURED DIMENSIONS ONLY

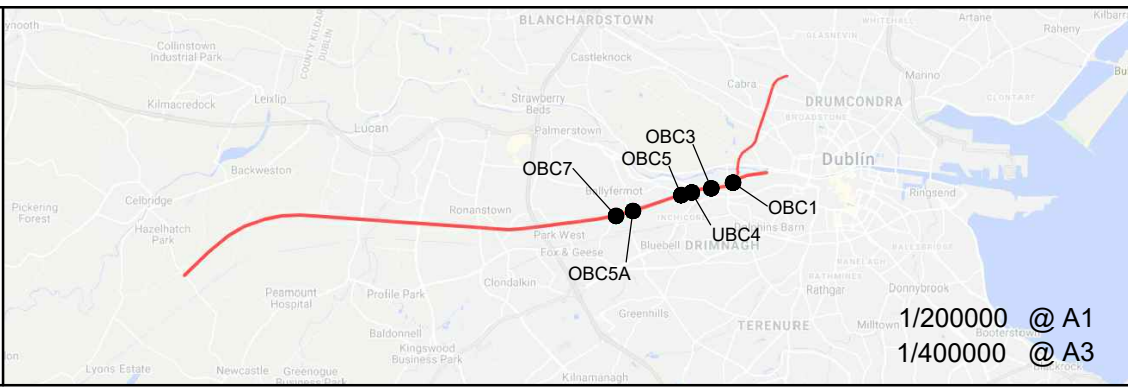
V:\5199586 Cork\6 Dwg-Graphics\61 AutoCad\DP-04-23-DWG-ST-TTA-55991.dwg



LEGEND :-

IRISH RAIL PROPERTY
BOUNDARY

© Irish Rail (2021). This drawing is confidential and the copyright in it is owned by Irish Rail. This drawing must not be either loaned, copied or otherwise reproduced in whole or in part or used for any purpose without the prior permission of Irish Rail.
© Ordnance Survey Ireland and government of Ireland. All O.S. Data used for plans are printed under: "Copyright Ordnance Survey Ireland" Survey No. 0039721, (OSi Aerial Data or OSi Lidar Data) & Survey No. 2020/OSi_NMA_180 (OSi Vector Data). All elevations are in metres and relate to OSi Geoid Model (OSGM02) Mean Head as defined by existing Project Control. All Co-ordinates are in Irish Transverse Mercator Grid (ITM) as defined by OSi active GPS station Tallaght College (TLLG).



DART+ South West



Rev	Date	Dwn	Chk'd	App'd	Description
v01	21/04/21	AOS	RM	AG	FOR PUBLIC CONSULTATION No1

larnród Éireann Irish Rail

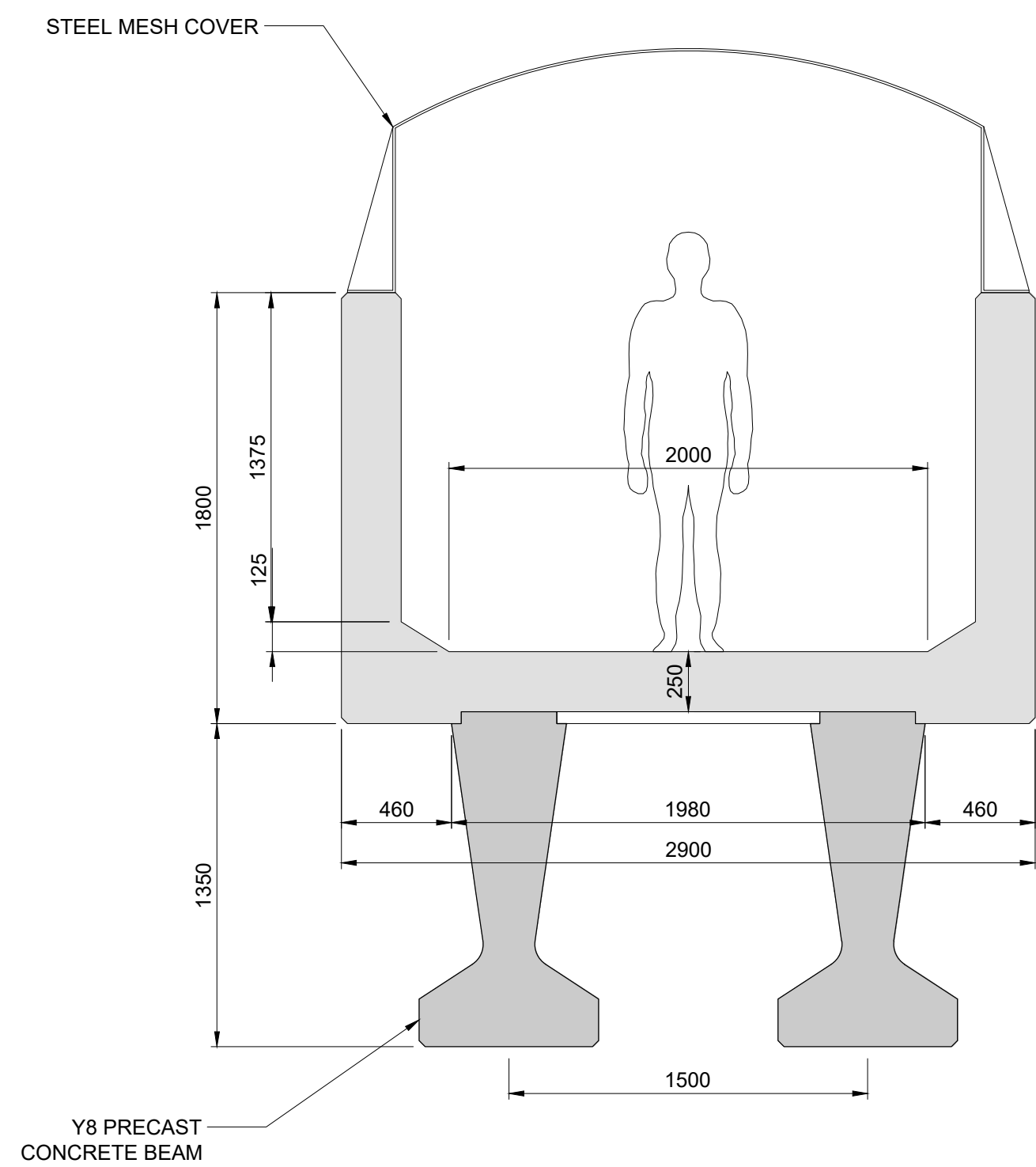
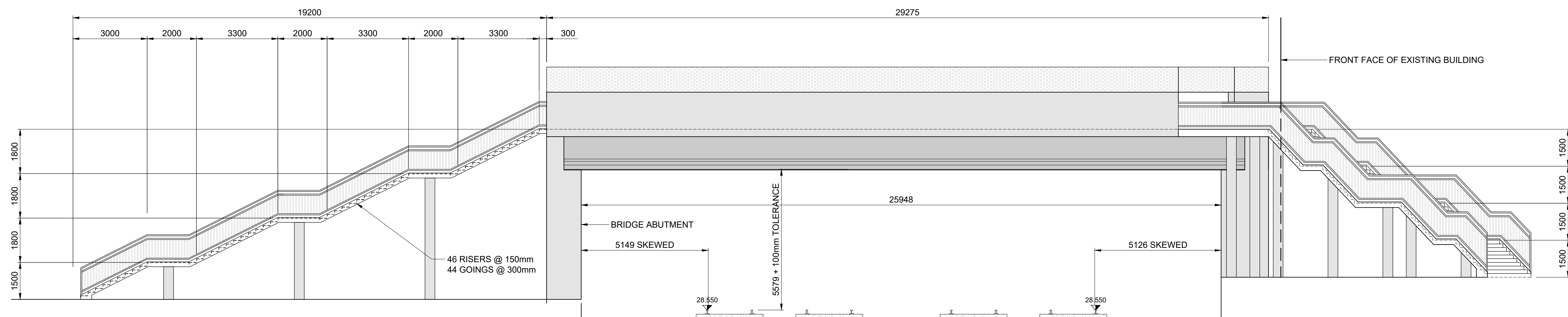
Date 28/01/21 Scale 1:200 @ A1
1:400 @ A3
Project Code 5199586 Issuer TTA

Engineering Designer
ATKINS
Supported by **rps**

Drawn AOS Checked RM Approved AG
QMS Code

Project Title	DART+ SOUTH WEST		
Drawing Title	KHYBER PASS FOOTBRIDGE (OBC5) OPTION 3 - DECK GENERAL ARRANGEMENT		
Drawing File Name	DP-04-23-DWG-ST-TTA-55991	Version v01	Status S3

DO NOT SCALE USE FIGURED DIMENSIONS ONLY



Preferred



Rev	Date	Drn	Chk'd	App'd	Description
04	04/04/04	ACC	RM	AC	FOR PUBLIC CONSULTATION N=1