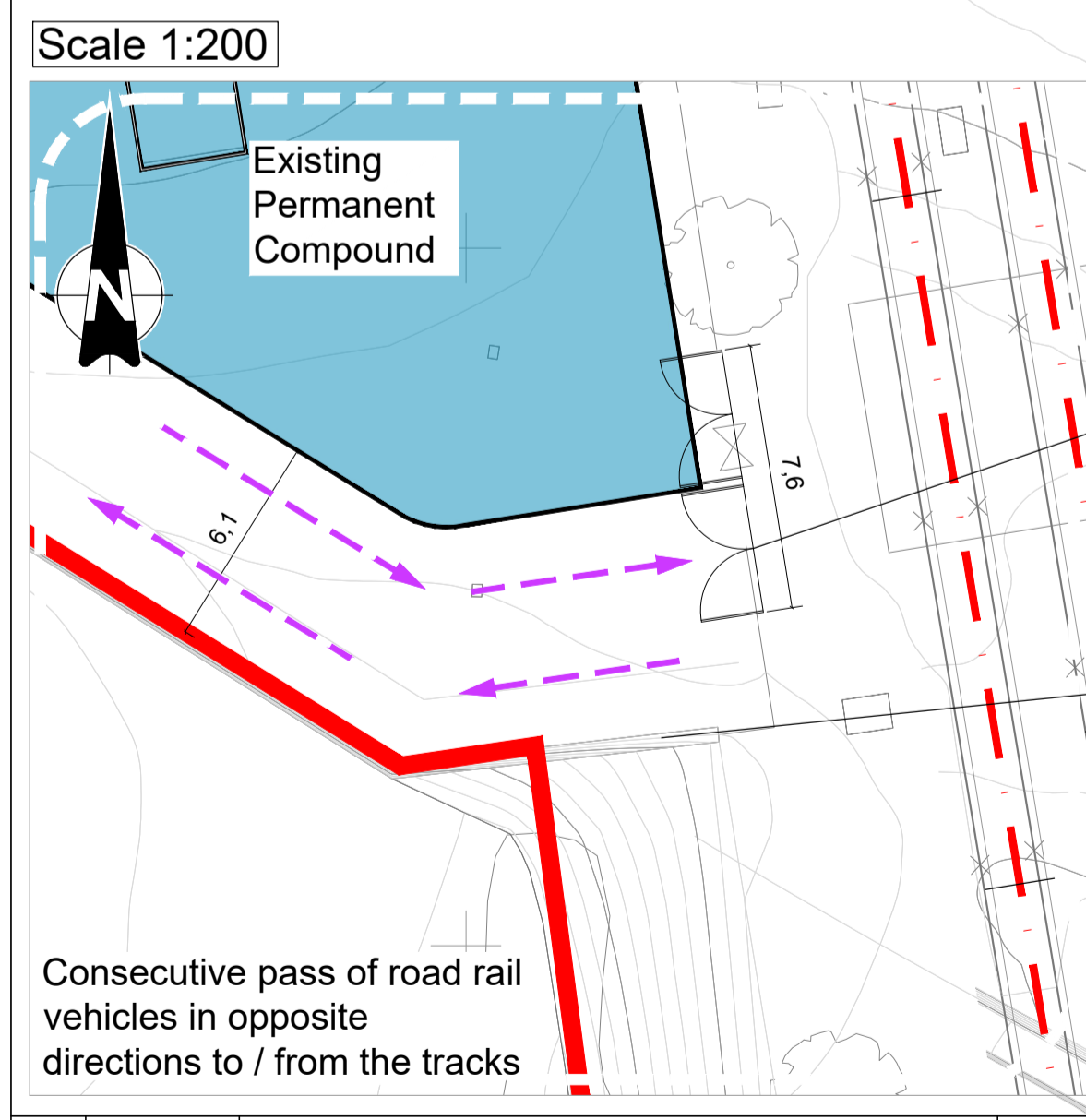
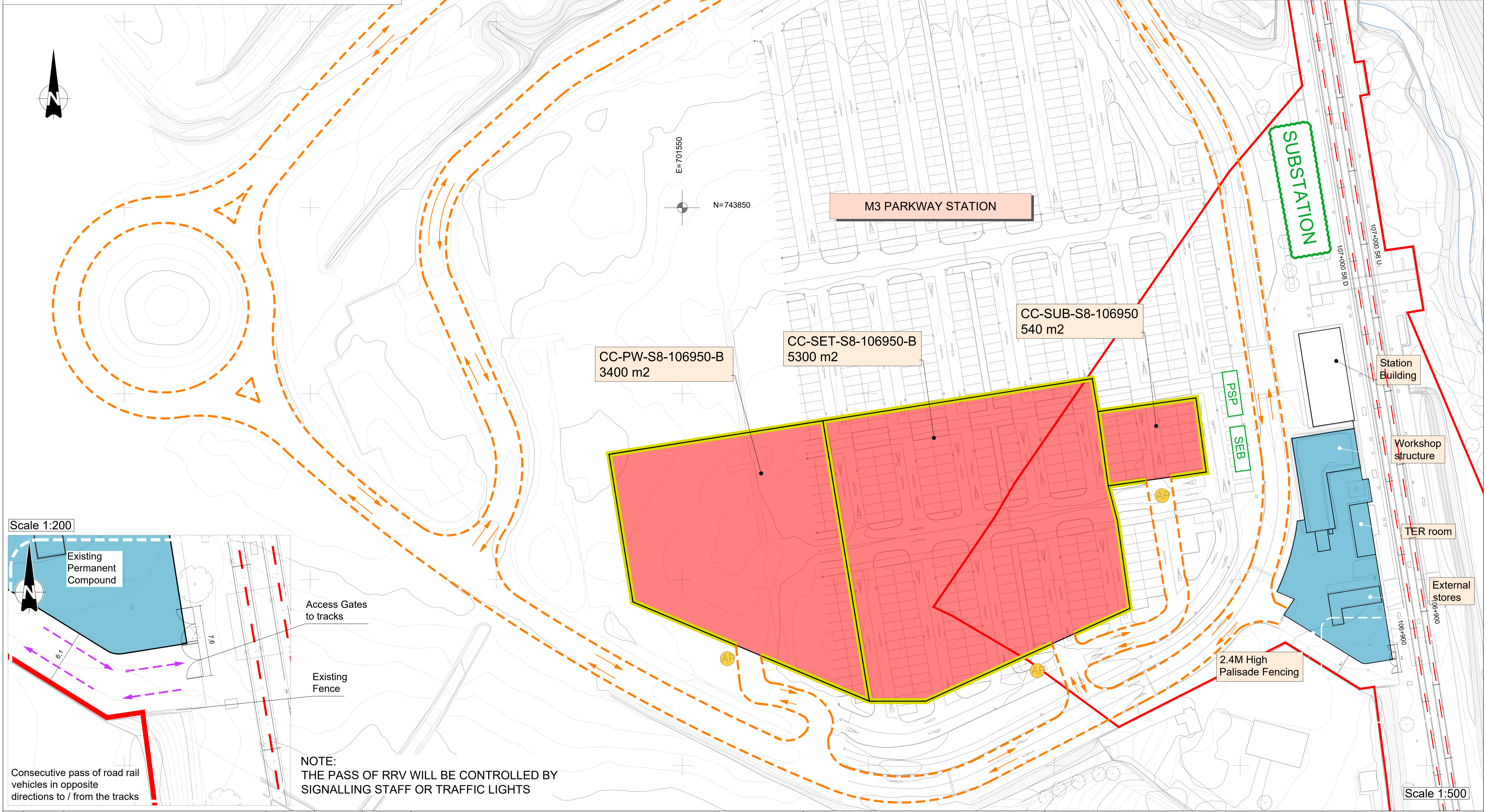


LEGEND	
	Temporary Construction Compound
	Existing Maintenance Compound
	Access route
	Irish Rail boundary
	Hoarding (Boundary/Split of compounds)
	SET Buildings
	Access point



NOTE:
THE PASS OF RRV WILL BE CONTROLLED BY
SIGNALLING STAFF OR TRAFFIC LIGHTS

V 01	May 2021	PUBLIC CONSULTATION	DFL	MFP	CCH
REV.	DATE	DESCRIPTION	PRODUCED BY	REVIEWED BY	APPROVED BY

© Irish Rail (2020). This drawing is confidential and the copyright in it is owned by Irish Rail. This drawing must not be either loaned, copied or otherwise reproduced in whole or in part or used for any purpose without the prior permission of Irish Rail.
Ordnance Survey Ireland and Government of Ireland. All O.S. data used for plans are printed under "Copyright Ordnance Survey Ireland".
Survey No. 9039720 (OSi Aerial Data or OSi Lidar Data) & Survey No. 2020OSI_NMA_190 (OSi Vector Data).
All elevations are in metres and relate to OSi Geoid Model (OSGM02) Mean Head as defined by existing Project Control.
All Co-ordinates are in Irish Transverse Mercator Grid (ITM) as defined by OSi active GPS station Tallaght College (TLLO).

Client

Consultant

Project

Drawing Title

COMPOUND LOCATION LAYOUTS
CC-PW-S8-106950-B, CC-SET-S8-106950-B AND CC-SUB-S8-106950

Scale: 1:500 @ A1

Drawing Number	Project	Originator	Discipline	Location	Type	Role	Number	Phase
MAY MDC	RGN	OTHE	DR	Y	0001	B		

Date: May 2021 | Job No: P/101086 | Status: S4 Suitable for Acceptance | Rev: V 01 | Sheet: 65 of 65