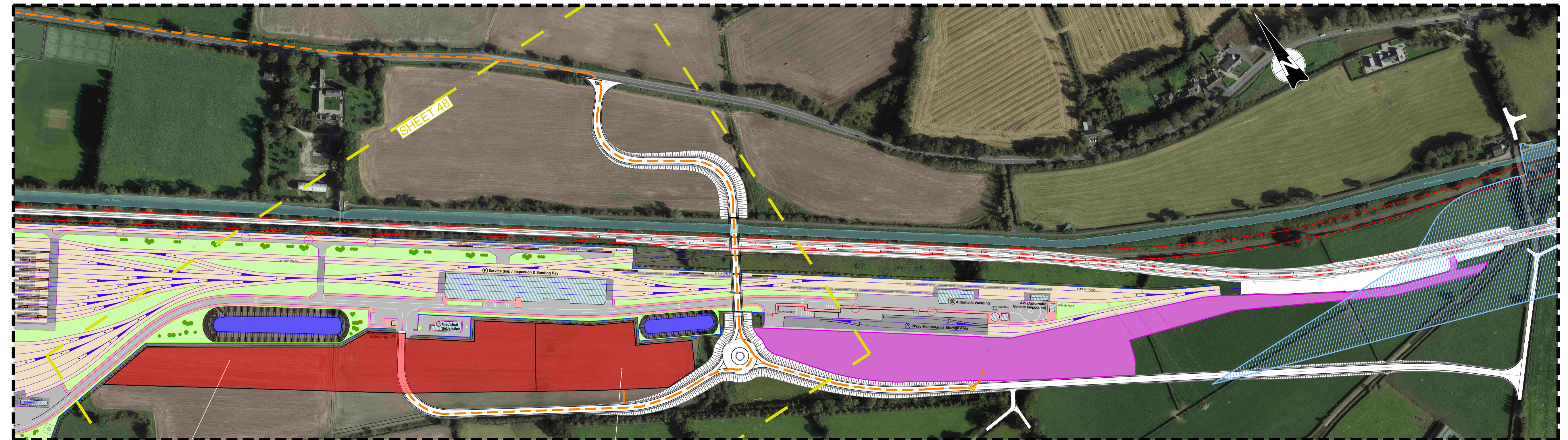


Figure 01 - Scale 1:2500



V 01	May 2021	PUBLIC CONSULTATION	DFL	MFP	CCH
REV.	DATE	DESCRIPTION	PRODUCED BY	REVIEWED BY	APPROVED BY
<small>© Irish Rail (2020). This drawing is confidential and the copyright in it is owned by Irish Rail. This drawing must not be either loaned, copied or otherwise reproduced in whole or in part or used for any purpose without the prior permission of Irish Rail. Ordnance Survey Ireland and Government of Ireland. All O.S. data used for plans are printed under " ".</small>					
<small>All elevations are in metres and relate to OSI Geoid Model (OSGM02) Mean Head as defined by existing Project Control. All Co-ordinates are in Irish Transverse Mercator Grid (ITM) as defined by OSI active GPS station Tallaght College (TLG0).</small>					

Client

Tionscaldal Éireann  
Project Ireland  
2040

NTA  
Udarás Náisiúnta Iompair  
National Transport Authority

Iarnród Éireann  
Irish Rail

Consultant

IDOM

C3

PROD

ROUGHAN & O'DONOVAN

Project

DART+  
West

Drawing Title

COMPOUND LOCATION  
ACCESS ROUTES  
CC-DEP-S7-92980-D AND CC-DEP-S7-UP-93280-U

Scale: 1:7500 @ A1

Drawing Number | Project | Originator | Discipline | Location | Type | Role | Number | Phase  
MAY MDC RGN OTHE DR Y 0001 B

Date: May 2021 | Job No: P/101086 | Status: S4 Suitable for Acceptance | Rev: V 01 | Sheet: 56 of 65