



Tionscadal Éireann  
Project Ireland  
2040

# DART+ Programme

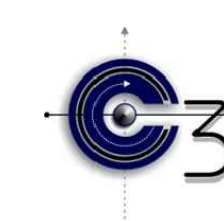
## DART+ Maynooth Line



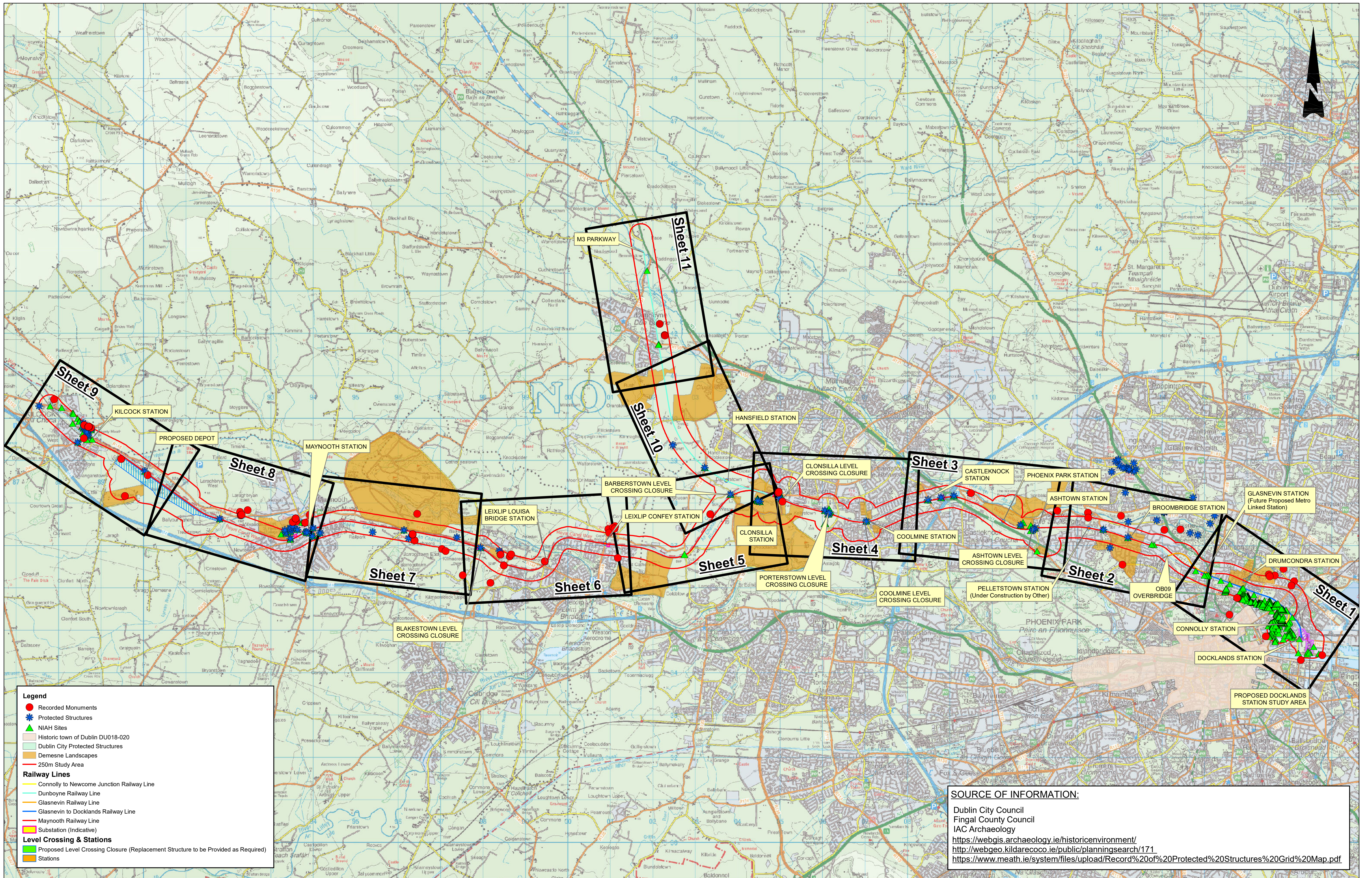
### Preliminary Options Selection Report - Volume 2: Drawings

#### CULTURAL HERITAGE DRAWINGS

MAY-ROD-ENV-ROUT-DR-EN-1300	Preliminary Options Selection – Key Cultural Heritage Constraints
MAY-ROD-ENV-ROUT-DR-EN-1301	Preliminary Options Selection – Key Cultural Heritage Constraints Sheet 1
MAY-ROD-ENV-ROUT-DR-EN-1302	Preliminary Options Selection – Key Cultural Heritage Constraints Sheet 2
MAY-ROD-ENV-ROUT-DR-EN-1303	Preliminary Options Selection – Key Cultural Heritage Constraints Sheet 3
MAY-ROD-ENV-ROUT-DR-EN-1304	Preliminary Options Selection – Key Cultural Heritage Constraints Sheet 4
MAY-ROD-ENV-ROUT-DR-EN-1305	Preliminary Options Selection – Key Cultural Heritage Constraints Sheet 5
MAY-ROD-ENV-ROUT-DR-EN-1306	Preliminary Options Selection – Key Cultural Heritage Constraints Sheet 6
MAY-ROD-ENV-ROUT-DR-EN-1307	Preliminary Options Selection – Key Cultural Heritage Constraints Sheet 7
MAY-ROD-ENV-ROUT-DR-EN-1308	Preliminary Options Selection – Key Cultural Heritage Constraints Sheet 8
MAY-ROD-ENV-ROUT-DR-EN-1309	Preliminary Options Selection – Key Cultural Heritage Constraints Sheet 9
MAY-ROD-ENV-ROUT-DR-EN-1310	Preliminary Options Selection – Key Cultural Heritage Constraints Sheet 10
MAY-ROD-ENV-ROUT-DR-EN-1311	Preliminary Options Selection – Key Cultural Heritage Constraints Sheet 11







**Legend**

- Recorded Monuments
- Protected Structures
- NIAH Sites
- Historic town of Dublin DU018-020
- Dublin City Protected Structures
- Demesne Landscapes
- 250m Study Area

**Railway Lines**

- Connolly to Newcome Junction Railway Line
- Dunboyne Railway Line
- Glasnevin Railway Line
- Glasnevin to Docklands Railway Line
- Maynooth Railway Line
- Substation (Indicative)

**Level Crossing & Stations**

- Proposed Level Crossing Closure (Replacement Structure to be Provided as Required)
- Stations

**SOURCE OF INFORMATION:**

Dublin City Council  
 Fingal County Council  
 IAC Archaeology  
<https://webgis.archaeology.ie/historicenvironment/>  
<http://webgeo.kildarecoco.ie/public/planningsearch/171>  
<https://www.meath.ie/system/files/upload/Record%20of%20Protected%20Structures%20Grid%20Map.pdf>

REV.	DATE	Description	DRAWN BY	CHECKED BY	REVIEWED BY	APPROVED BY

© Irish Rail (2020). This drawing is confidential and the copyright in it is owned by Irish Rail. This drawing must not be either loaned, copied or otherwise reproduced in whole or in part or used for any purpose without the prior permission of Irish Rail.  
 © Ordnance Survey Ireland and Government of Ireland. All O.S. data used for plans are printed under "Copyright Ordnance Survey Ireland" Survey No. 0029720. OS Aerial Data or OS Lidar Data. Survey No. 2020/OS/LMA\_100 (OS Vector Data).  
 All elevations are in metres and relate to OS Geoid Model (OSGM02) Mean Head as defined by existing Project Control.  
 All Co-ordinates are in Irish Transverse Mercator Grid (ITM) as defined by OS active GPS station Tallaght College (TLG).

Client: **NTA** Údarás Náisiúnta Iompair National Transport Authority

Consultant: **IDOM** **C3** **PROD** **DART+ PROGRAMME**

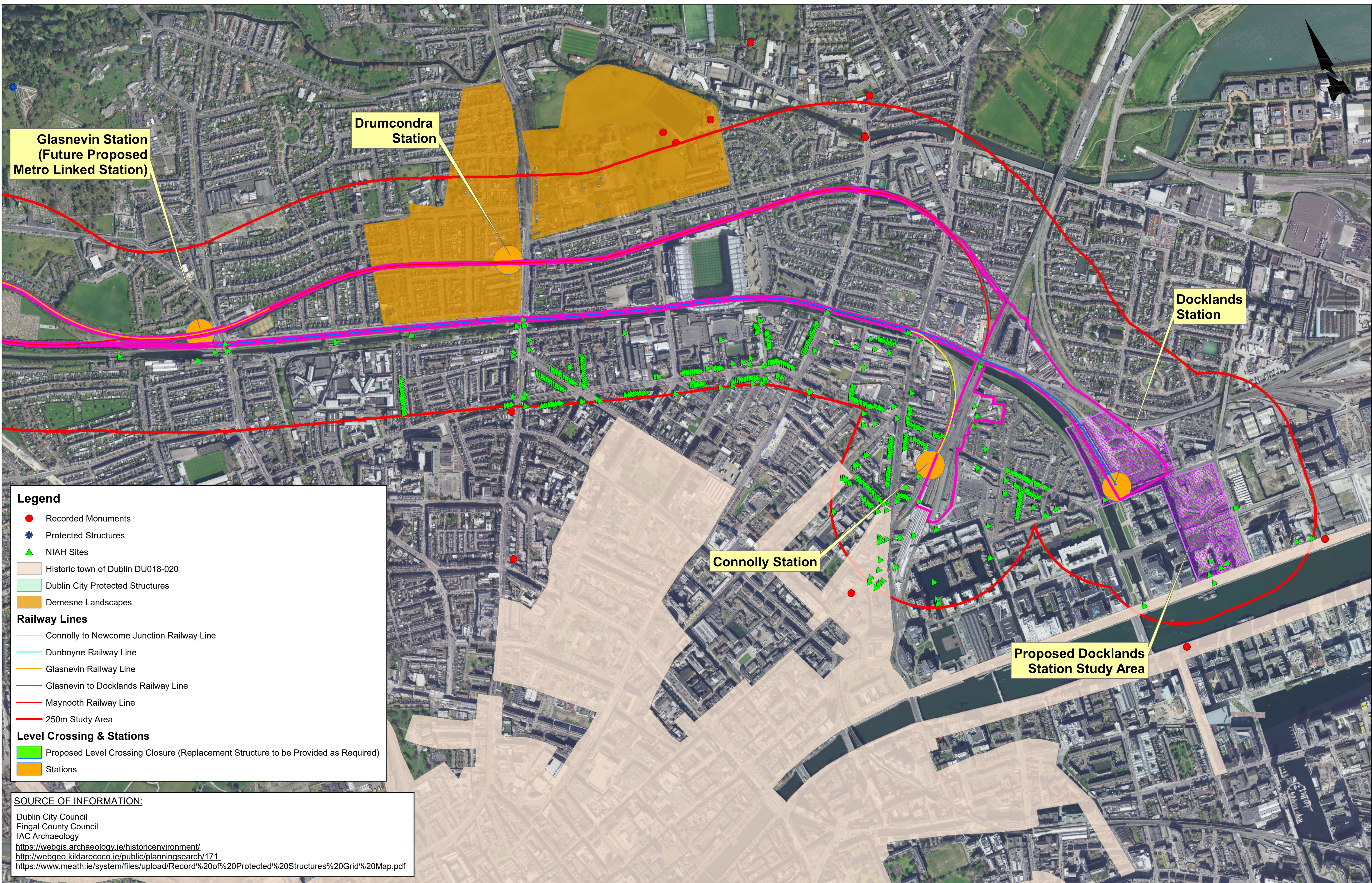
Project: **Tionscadal Éireann Project Ireland 2040** **DART+ MAYNOOTH LINE**

Drawing Title: **KEY CULTURAL HERITAGE CONSTRAINTS OVERVIEW**

Drawing Number	Project	Originator	Discipline	Location	Type	Role	Number	Drawn By	Checked By	Reviewed By	Approved By
MAY - ROD - ENV - ROUT - DR - EN - 1300							1300	MMC	PO'S	FOK	

Scale: 1:40,000 Date: June 2020 Job No: 19-157 Status: S3-Review & Comment Rev. Sheet: 1 of 1





**Legend**

- Recorded Monuments
- Protected Structures
- NIAH Sites
- Historic town of Dublin DU018-020
- Dublin City Protected Structures
- Demesne Landscapes

**Railway Lines**

- Connolly to Newcome Junction Railway Line
- Dunboyne Railway Line
- Glasnevin Railway Line
- Glasnevin to Docklands Railway Line
- Maynooth Railway Line
- 250m Study Area

**Level Crossing & Stations**

- Proposed Level Crossing Closure (Replacement Structure to be Provided as Required)
- Stations

**SOURCE OF INFORMATION:**

Dublin City Council  
 Fingal County Council  
 IAC Archaeology  
<https://webgis.archaeology.ie/historicenvironment/>  
<http://webgeo.kildarecoco.ie/public/planningsearch/171>  
<https://www.meath.ie/system/files/upload/Record%20of%20Protected%20Structures%20Grid%20Map.pdf>

REV.	DATE	Description	DRAWN BY	CHECKED BY	REVIEWED BY	APPROVED BY

© Irish Rail (2020). This drawing is confidential and the copyright in it is owned by Irish Rail. This drawing must not be either loaned, copied or otherwise reproduced in whole or in part or used for any purpose without the prior permission of Irish Rail.  
 © Ordnance Survey Ireland and Government of Ireland. All O.S. data used for plans are printed under " Copyright Ordnance Survey Ireland " Survey No. 0029720  
 © SI Aerial Data or OSi Lidar Data: Survey No. 2020/OS/LMA\_160 (OSi Vector Data)  
 All elevations are in metres and relate to OSi Geoid Model (OSGM02) Mean Head as defined by existing Project Control.  
 All Co-ordinates are in Irish Transverse Mercator Grid (ITM) as defined by OSi active GPS station Tallaght College (TLG).

20 August 2020 12:08:12 Document Path: J:\2019\19157\19157-02\_WIP\08 MODELS\05 GIS\01 MXD\MAY-ROD-ENV-ROUT-DR-EN-1301 P0 (Key Cultural Heritage Constraints)\_Sheet 1 of 11.mxd

Client

NTA  
 Údarás Náisiúnta Iompair  
 National Transport Authority

Iarnród Éireann  
 Irish Rail

CIE

Tionscadal Éireann  
 Project Ireland  
 2040

Project

DART+  
 MAYNOOTH LINE

Consultant

IDOM

ROD  
 ROUGHAN & O'DONOVAN

DART+  
 PROGRAMME

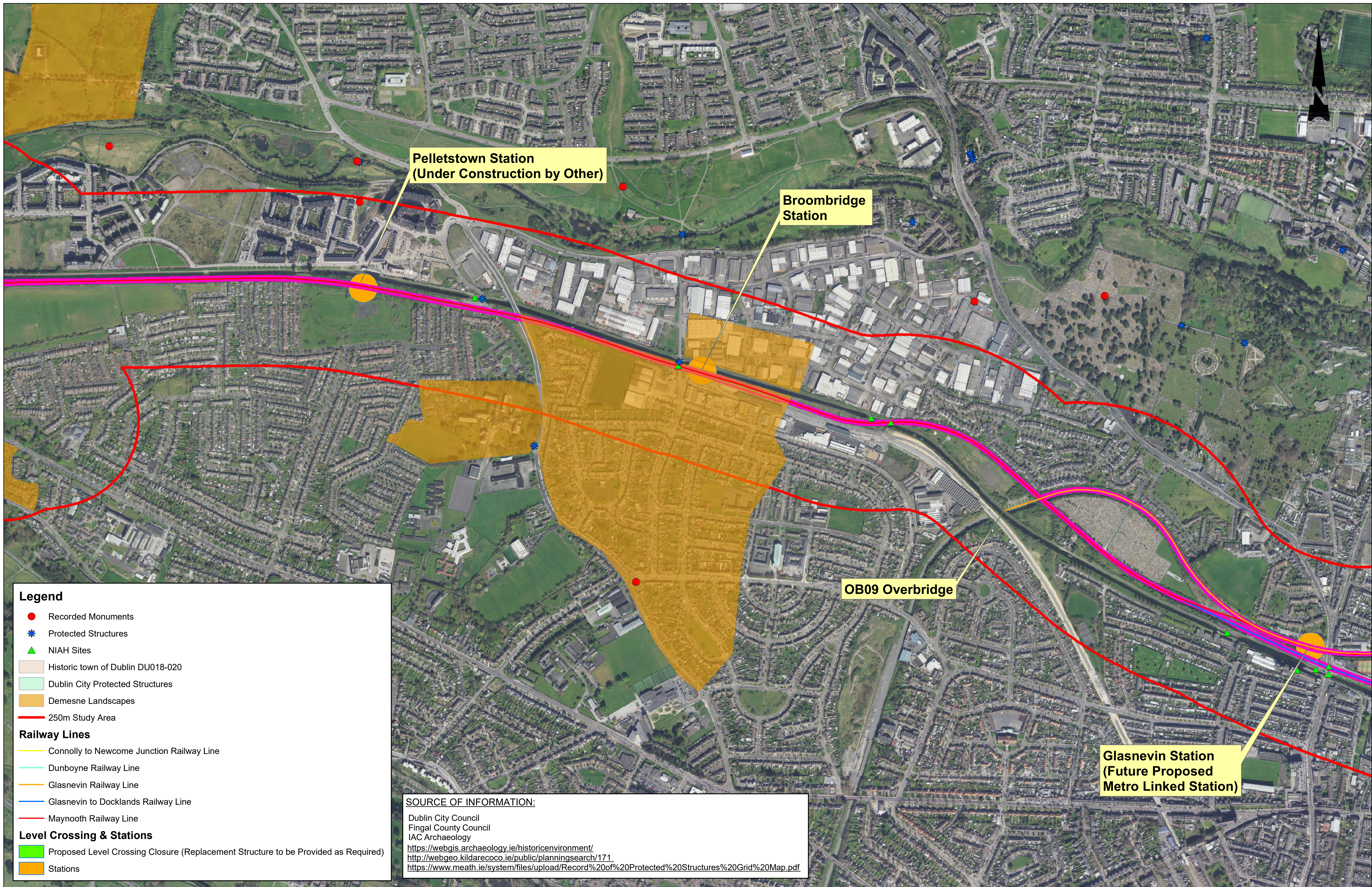
Drawing Title

KEY CULTURAL HERITAGE CONSTRAINTS  
 Sheet 1 of 11

Drawing Number	Project	Originator	Discipline	Location	Type	Role	Number	Drawn By	Checked By	Reviewed By	Approved By
	MAY - ROD - ENV - ROUT - DR - EN - 1301	MMC	FOK	BC							

Scale	Date	Job No.	Status	Rev.	Sheet
1:5,000	June 2020	19-157	S3 - Review & Comment		1 of 11





**Legend**

- Recorded Monuments
- ✳ Protected Structures
- ▲ NIAH Sites
- Historic town of Dublin DU018-020
- Dublin City Protected Structures
- Demesne Landscapes
- 250m Study Area

**Railway Lines**

- Connolly to Newcome Junction Railway Line
- Dunboyne Railway Line
- Glasnevin Railway Line
- Glasnevin to Docklands Railway Line
- Maynooth Railway Line

**Level Crossing & Stations**

- Proposed Level Crossing Closure (Replacement Structure to be Provided as Required)
- Stations

**SOURCE OF INFORMATION:**

Dublin City Council  
 Fingal County Council  
 IAC Archaeology

<https://webgis.archaeology.ie/historicenvironment/>  
<http://webgeo.kildarecoco.ie/public/planningsearch/171>  
<https://www.meath.ie/system/files/upload/Record%20of%20Protected%20Structures%20Grid%20Map.pdf>

REV.	DATE	Description	DRAWN BY	CHECKED BY	REVIEWED BY	APPROVED BY

© Irish Rail (2020). This drawing is confidential and the copyright in it is owned by Irish Rail. This drawing must not be either loaned, copied or otherwise reproduced in whole or in part or used for any purpose without the prior permission of Irish Rail.  
 © Ordnance Survey Ireland and Government of Ireland. All O.S. data used for plans are printed under " Copyright Ordnance Survey Ireland " Survey No. 0029720  
 All elevations are in metres and relate to OSI Geoid Model (OSGM02) Main Head as defined by existing Project Control.  
 All Co-ordinates are in Irish Transverse Mercator Grid (ITM) as defined by OSI active GPS station Tallaght College (TLG).

Client

NTA  
 Údarás Náisiúnta Iompair  
 National Transport Authority

lanróid Éireann  
 Irish Rail

CIE

Tionscatal Éireann  
 Project Ireland  
 2040

Project

DART+  
 MAYNOOTH LINE

Consultant

IDOM

ROD  
 ROUGHAN & O'DONOVAN

DART+  
 PROGRAMME

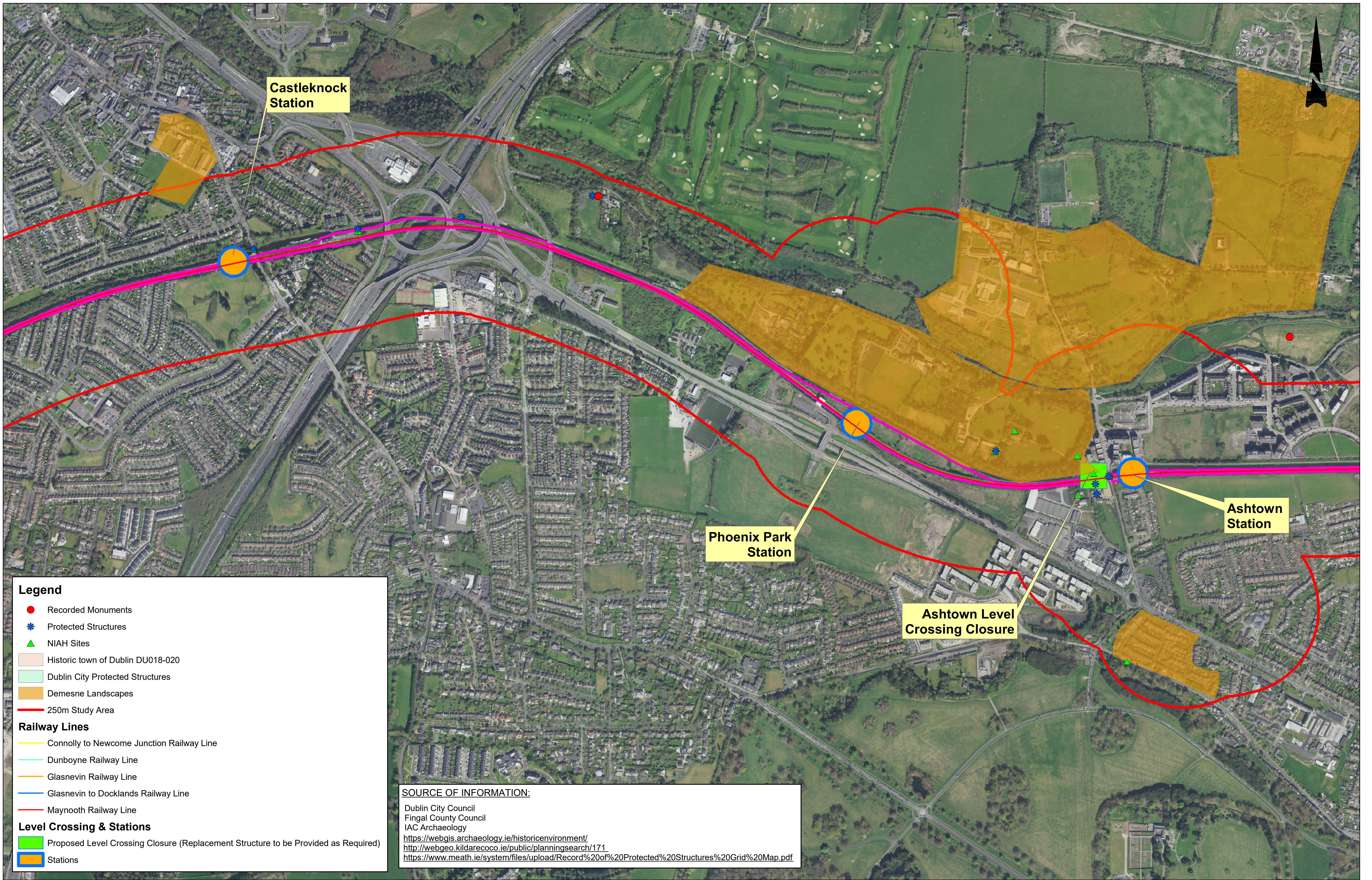
Drawing Title

KEY CULTURAL HERITAGE CONSTRAINTS  
 Sheet 2 of 11

Drawing Number	Project	Originator	Discipline	Location	Type	Role	Number	Drawn By	Checked By	Reviewed By	Approved By
	MAY - ROD - ENV - ROUT - DR - EN - 1302	MMC	FO'K	BC							

Scale: 1:5,000 Date: June 2020 Job No: 19-157 Status: S3 - Review & Comment Rev. Sheet: 1 of





Castleknock Station

Phoenix Park Station

Ashtown Level Crossing Closure

Ashtown Station

**Legend**

- Recorded Monuments
- ✳ Protected Structures
- ▲ NIAH Sites
- Historic town of Dublin DU018-020
- Dublin City Protected Structures
- Demesne Landscapes
- 250m Study Area

**Railway Lines**

- Connolly to Newcome Junction Railway Line
- Dunboyne Railway Line
- Glasnevin Railway Line
- Glasnevin to Docklands Railway Line
- Maynooth Railway Line

**Level Crossing & Stations**

- Proposed Level Crossing Closure (Replacement Structure to be Provided as Required)
- Stations

**SOURCE OF INFORMATION:**

Dublin City Council  
 Fingal County Council  
 IAC Archaeology  
<https://webgis.archaeology.ie/historicenvironment/>  
<http://webgeo.kildarecoco.ie/public/planningsearch/171>  
<https://www.meath.ie/system/files/upload/Record%20of%20Protected%20Structures%20Grid%20Map.pdf>

REV.	DATE	Description	DRAWN BY	CHECKED BY	REVIEWED BY	APPROVED BY

© Irish Rail (2020). This drawing is confidential and the copyright in it is owned by Irish Rail. This drawing must not be either loaned, copied or otherwise reproduced in whole or in part or used for any purpose without the prior permission of Irish Rail.  
 © Ordnance Survey Ireland and Government of Ireland. All O.S. data used for plans are printed under " Copyright Ordnance Survey Ireland " Survey No. 0029720  
 All elevations are in metres and relate to OSI Geoid Model (OSGM02) Mean Head as defined by existing Project Control.  
 All Co-ordinates are in Irish Transverse Mercator Grid (ITM) as defined by OSI active GPS station Tallaght College (TLG).

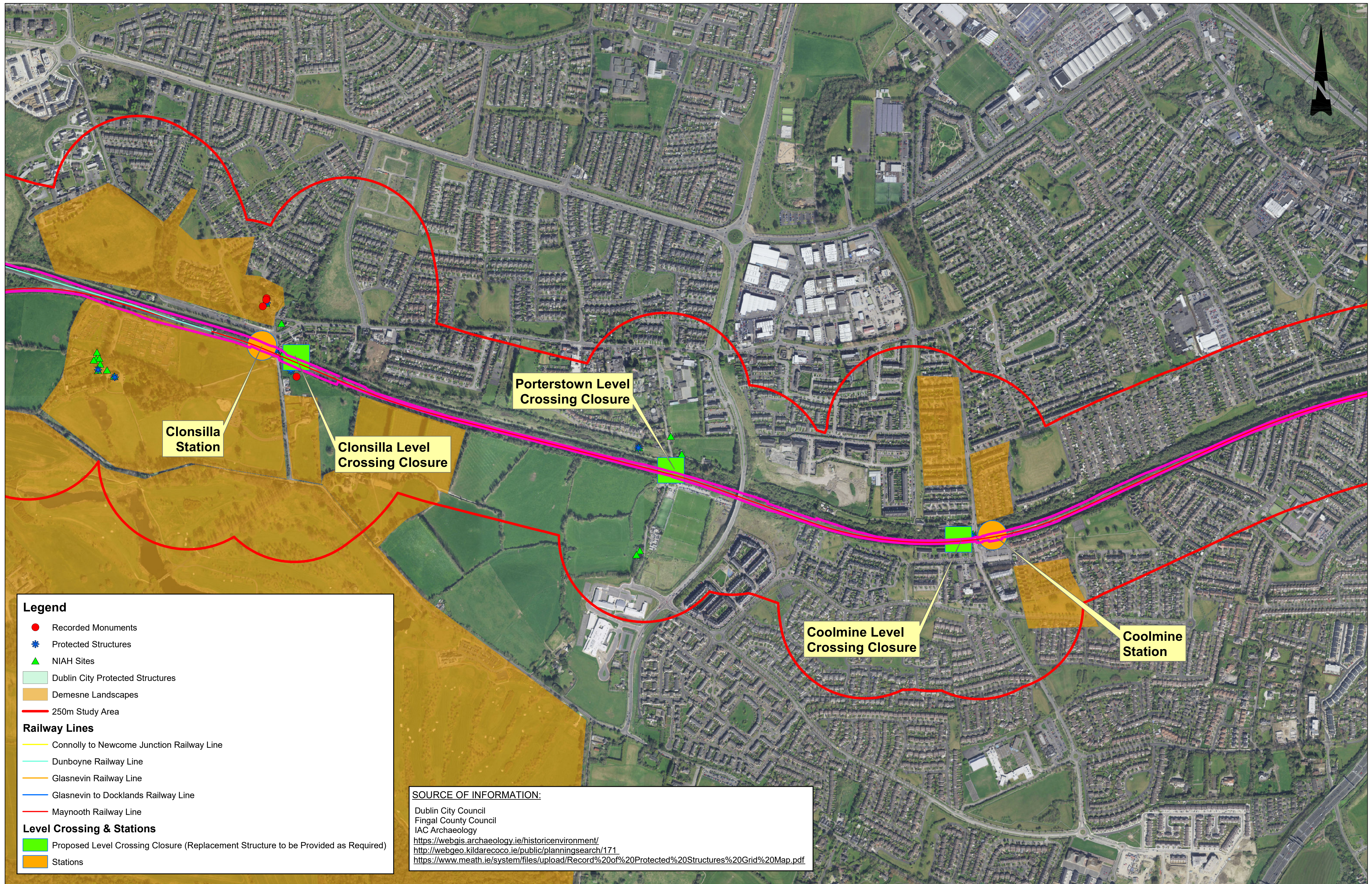
Client

Consultant

Project

Drawing Title										KEY CULTURAL HERITAGE CONSTRAINTS Sheet 3 of 11			
Drawing Number	Project	Originator	Discipline	Location	Type	Role	Number	Drawn By	Checked By	Reviewed By	Approved By		
	MAY - ROD - ENV - ROUT - DR - EN -						1303	MMC	FO'K	BC			
Scale:	1:5,000	Date:	June 2020	Job No.:	19-157	Status:	S3 - Review & Comment	Rev.:		Sheet:	1 of		





**Legend**

- Recorded Monuments
- Protected Structures
- NIAH Sites
- Dublin City Protected Structures
- Demesne Landscapes
- 250m Study Area

**Railway Lines**

- Connolly to Newcome Junction Railway Line
- Dunboyne Railway Line
- Glasnevin Railway Line
- Glasnevin to Docklands Railway Line
- Maynooth Railway Line

**Level Crossing & Stations**

- Proposed Level Crossing Closure (Replacement Structure to be Provided as Required)
- Stations

**SOURCE OF INFORMATION:**  
 Dublin City Council  
 Fingal County Council  
 IAC Archaeology  
<https://webgis.archaeology.ie/historicenvironment/>  
<http://webgeo.kildarecoco.ie/public/planningsearch/171>  
<https://www.meath.ie/system/files/upload/Record%20of%20Protected%20Structures%20Grid%20Map.pdf>

REV.	DATE	Description	DRAWN BY	CHECKED BY	REVIEWED BY	APPROVED BY

© Irish Rail (2020). This drawing is confidential and the copyright in it is owned by Irish Rail. This drawing must not be either loaned, copied or otherwise reproduced in whole or in part or used for any purpose without the prior permission of Irish Rail.  
 © Ordnance Survey Ireland and Government of Ireland. All O.S. data used for plans are printed under " Copyright Ordnance Survey Ireland " Survey No. 0029720  
 All elevations are in metres and relate to OSI Geoid Model (OSGM02) Malin Head as defined by existing Project Control.  
 All Co-ordinates are in Irish Transverse Mercator Grid (ITM) as defined by OSI active GPS station Tallaght College (TLG).

Client

NTA  
Udarás Náisiúnta Iompair  
National Transport Authority

Iarnród Éireann  
Irish Rail

CIE

Tionscaldal Éireann  
Project Ireland  
2040

Consultant

IDOM

RODRIGAN & O'DONOVAN

DART+  
PROGRAMME

Project

DART+  
MAYNOOTH LINE

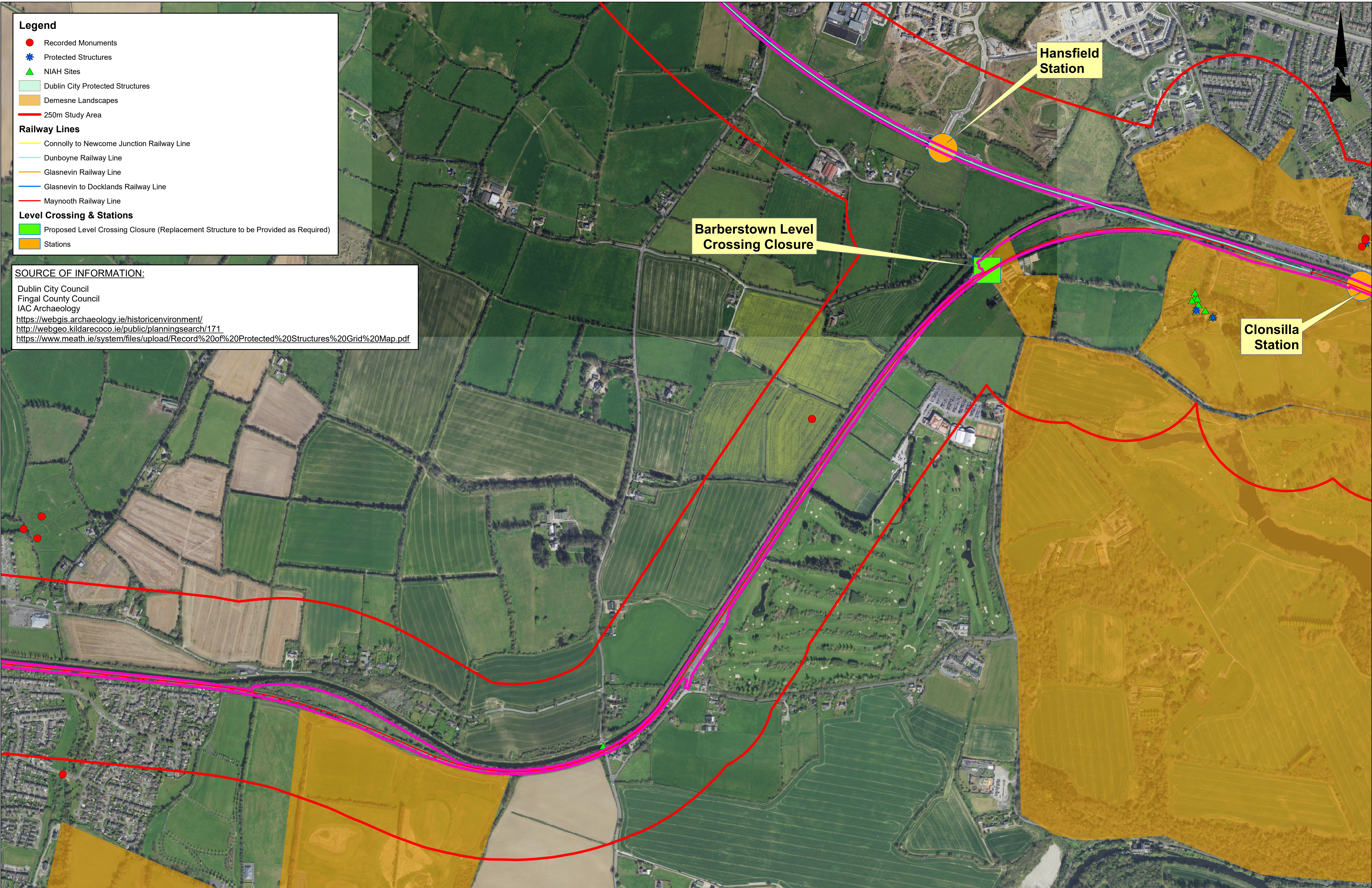
Drawing Title

**KEY CULTURAL HERITAGE CONSTRAINTS**  
Sheet 4 of 11

Drawing Number	Project	Originator	Discipline	Location	Type	Role	Number	Drawn By	Checked By	Reviewed By	Approved By
	MAY - ROD - ENV - ROUT - DR						1304	MMC	FOK	BC	

Scale: 1:5,000    Date: June 2020    Job No: 19-157    Status: S3 - Review & Comment    Rev:    Sheet: 1 of





**Legend**

- Recorded Monuments
- Protected Structures
- NIAH Sites
- Dublin City Protected Structures
- Demesne Landscapes
- 250m Study Area

**Railway Lines**

- Connolly to Newcome Junction Railway Line
- Dunboyne Railway Line
- Glasnevin Railway Line
- Glasnevin to Docklands Railway Line
- Maynooth Railway Line

**Level Crossing & Stations**

- Proposed Level Crossing Closure (Replacement Structure to be Provided as Required)
- Stations

**SOURCE OF INFORMATION:**

Dublin City Council  
 Fingal County Council  
 IAC Archaeology  
<https://webgis.archaeology.ie/historicenvironment/>  
<http://webgeo.kildarecoco.ie/public/planningsearch/171>  
<https://www.meath.ie/system/files/upload/Record%20of%20Protected%20Structures%20Grid%20Map.pdf>

REV.	DATE	Description	DRAWN BY	CHECKED BY	REVIEWED BY	APPROVED BY

© Irish Rail (2020). This drawing is confidential and the copyright in it is owned by Irish Rail. The drawing must not be either loaned, copied or otherwise reproduced in whole or in part or used for any purpose without the prior permission of Irish Rail.  
 © Ordnance Survey Ireland and Government of Ireland. All O.S. data used for plans are printed under " Copyright Ordnance Survey Ireland"  
 Survey No. 0029720 | Aerial Data or OSi Lidar Data | Survey No. 2020/OSI/NMA\_100 (OSi Vector Data)  
 All elevations are in metres and relate to OSi Geoid Model (OSGM02) Mean Head as defined by existing Project Control.  
 All Co-ordinates are in Irish Transverse Mercator Grid (ITM) as defined by OSi active GPS station Tallaght College (TLG).

20 August 2020 14:05:54 Document Path: J:\2019\19157\19157-02\_WIP\08 MODELS\05 GIS\01 MXD\MAY-ROD-ENV-ROUT-EN-1305 P0 (Key Cultural Heritage Constraints)\_Sheet 5 of 11.mxd

Client: **NTA** (Udarás Náisiúnta Iompair National Transport Authority), **Iarnród Éireann Irish Rail**, **CIE**

Consultant: **IDOM**, **G3**, **FIROD** (ROUHRAN & O'DONOVAN), **DART+ PROGRAMME**

Project: **Tionscadal Éireann Project Ireland 2040**, **DART+ MAYNOOTH LINE**

Drawing Title: **KEY CULTURAL HERITAGE CONSTRAINTS Sheet 5 of 11**

Drawing Number	Project	Originator	Discipline	Location	Type	Role	Number	Drawn By	Checked By	Reviewed By	Approved By
	MAY - ROD - ENV - ROUT - DR - EN -						1305	MMC	FOK	BC	

Scale: 1:5,000 Date: June 2020 Job No: 19-157 Status: S3 - Review & Comment Rev: Sheet 1 of 11



**Legend**

- Recorded Monuments
- ✳ Protected Structures
- ▲ NIAH Sites
- Dublin City Protected Structures
- Demesne Landscapes
- 250m Study Area

**Railway Lines**

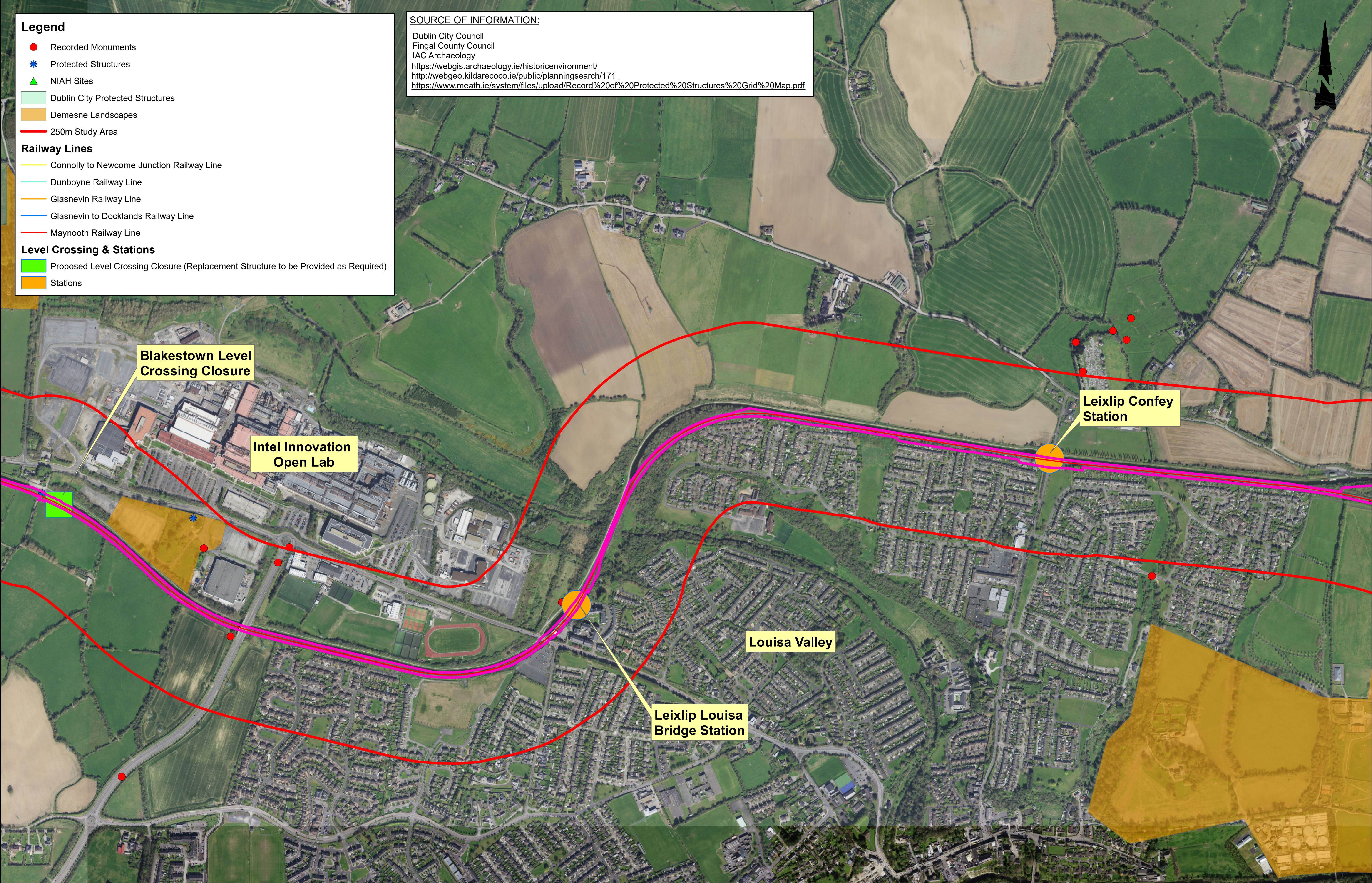
- Connolly to Newcome Junction Railway Line
- Dunboyne Railway Line
- Glasnevin Railway Line
- Glasnevin to Docklands Railway Line
- Maynooth Railway Line

**Level Crossing & Stations**

- Proposed Level Crossing Closure (Replacement Structure to be Provided as Required)
- Stations

**SOURCE OF INFORMATION:**

Dublin City Council  
 Fingal County Council  
 IAC Archaeology  
<https://webgis.archaeology.ie/historicenvironment/>  
<http://webgeo.kildarecoco.ie/public/planningsearch/171>  
<https://www.meath.ie/system/files/upload/Record%20of%20Protected%20Structures%20Grid%20Map.pdf>



**Blakestown Level Crossing Closure**

**Intel Innovation Open Lab**

**Leixlip Confey Station**

**Louisa Valley**

**Leixlip Louisa Bridge Station**

REV.	DATE	Description	DRAWN BY	CHECKED BY	REVIEWED BY	APPROVED BY

© Irish Rail (2020). This drawing is confidential and the copyright in it is owned by Irish Rail. This drawing must not be either loaned, copied or otherwise reproduced in whole or in part or used for any purpose without the prior permission of Irish Rail.  
 © Ordnance Survey Ireland and Government of Ireland. All O.S. data used for plans are printed under "Copyright Ordnance Survey Ireland" Survey No. 0029720. OS Aerial Data or OS Lidar Data. Survey No. 2020/OS/LMA\_100 (OS Vector Data).  
 All elevations are in metres and relate to OSi Geoid Model (OSGM02) Mean Head as defined by existing Project Control.  
 All Co-ordinates are in Irish Transverse Mercator Grid (ITM) as defined by OSi active GPS station Tallaght College (TLG).

Client

Consultant

Project

Project

Drawing Title		KEY CULTURAL HERITAGE CONSTRAINTS Sheet 6 of 11									
Drawing Number	Project	Originator	Discipline	Location	Type	Role	Number	Drawn By	Checked By	Reviewed By	Approved By
	MAY - ROD	- ENV	- ROUT	- DR	- EN	-	1306	MMC	FO'K	BC	
Scale:	1:5,000	Date:	June 2020	Job No.:	19-157	Status:	S3 - Review & Comment	Rev.:		Sheet:	1 of 11



**Legend**

- Recorded Monuments
- ✳ Protected Structures
- ▲ NIAH Sites
- Dublin City Protected Structures
- Demesne Landscapes
- 250m Study Area

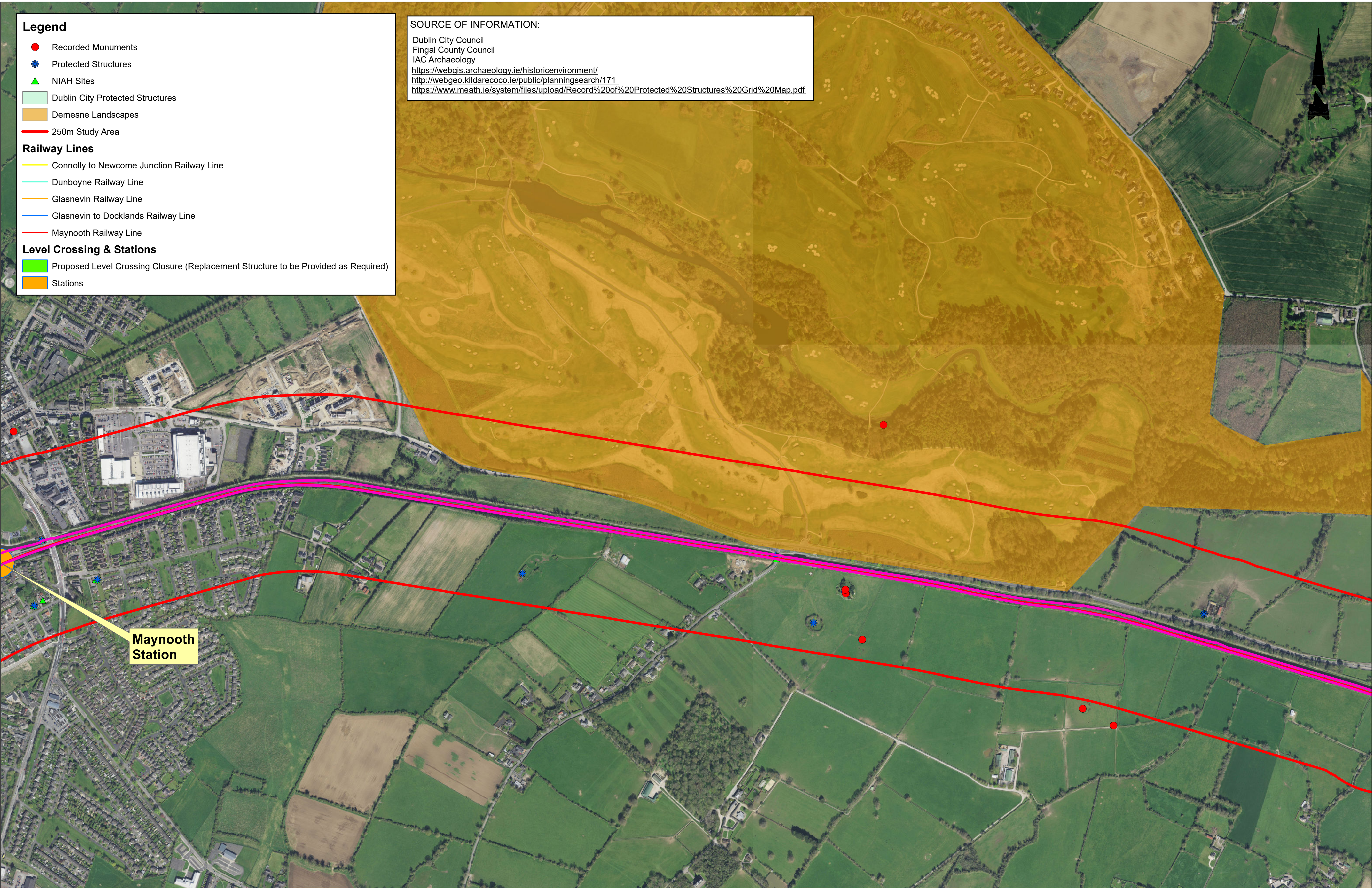
**Railway Lines**

- Connolly to Newcome Junction Railway Line
- Dunboyne Railway Line
- Glasnevin Railway Line
- Glasnevin to Docklands Railway Line
- Maynooth Railway Line

**Level Crossing & Stations**

- Proposed Level Crossing Closure (Replacement Structure to be Provided as Required)
- Stations

**SOURCE OF INFORMATION:**  
 Dublin City Council  
 Fingal County Council  
 IAC Archaeology  
<https://webgis.archaeology.ie/historicenvironment/>  
<http://webgeo.kildarecoco.ie/public/planningsearch/171>  
<https://www.meath.ie/system/files/upload/Record%20of%20Protected%20Structures%20Grid%20Map.pdf>



**Maynooth Station**

REV.	DATE	Description	DRAWN BY	CHECKED BY	REVIEWED BY	APPROVED BY

© Irish Rail (2020). This drawing is confidential and the copyright in it is owned by Irish Rail. The drawing must not be either loaned, copied or otherwise reproduced in whole or in part or used for any purpose without the prior permission of Irish Rail.  
 © Ordnance Survey Ireland and Government of Ireland. All O.S. data used for plans are printed under "Copyright Ordnance Survey Ireland" Survey No. 0029720. OS Aerial Data or OS Lidar Data. Survey No. 2020/OS/LMA\_100 (OSi Vector Data)  
 All elevations are in metres and relate to OSi Geoid Model (OSGM02) Mean Head as defined by existing Project Control.  
 All Co-ordinates are in Irish Transverse Mercator Grid (ITM) as defined by OSi active GPS station Tallaght College (TLG).

20 August 2020 14:22:46 Document Path: J:\2019\19157\19157-02\_WIP\08 MODELS\05 GIS\01 MXD\MAY-ROD-ENV-ROUT-DR-EN-1307 P0 (Key Cultural Heritage Constraints)\_Sheet 7 of 11.mxd

Client

Consultant

Tionscadal Éireann Project Ireland 2040

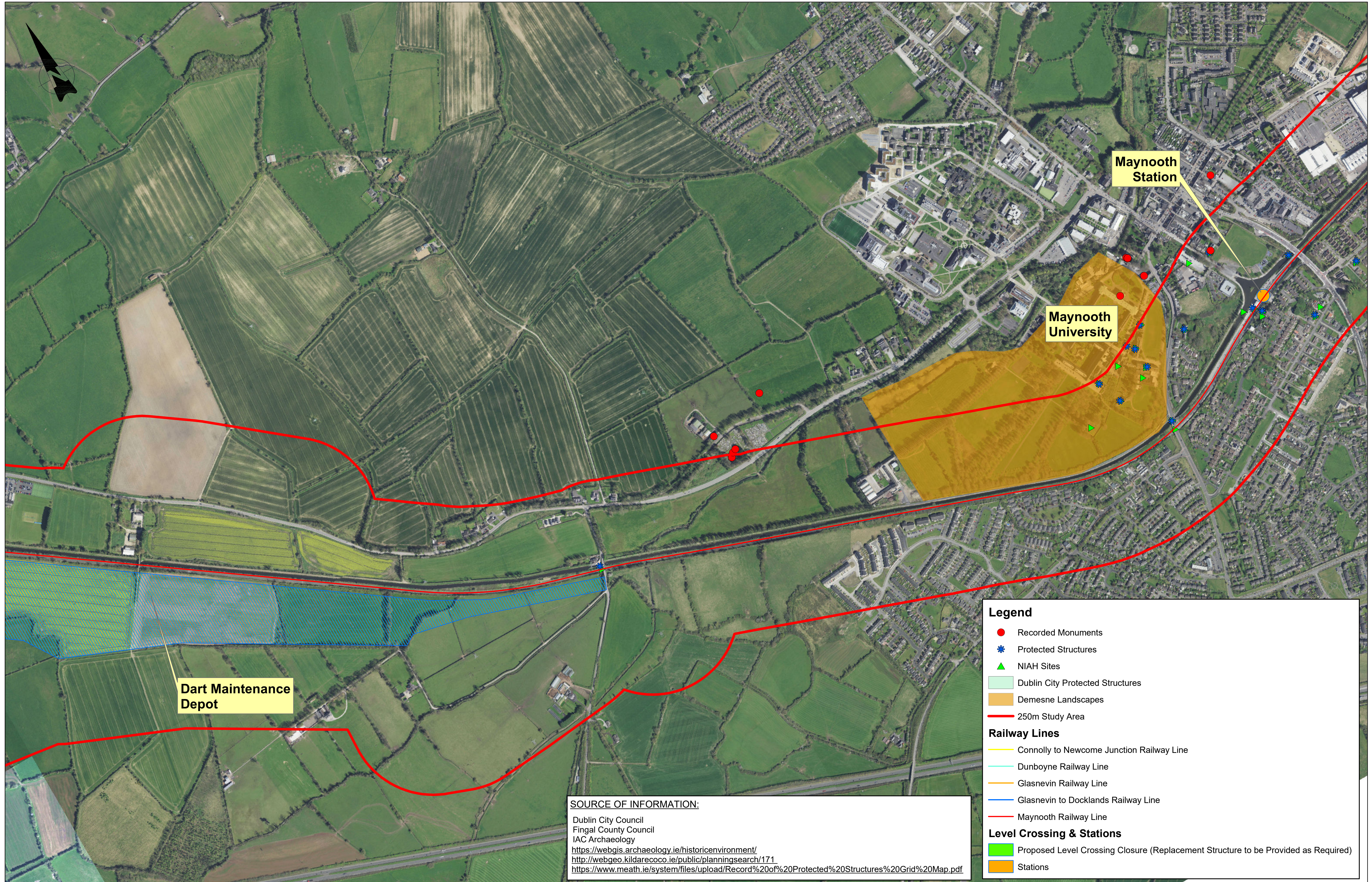
Project

Drawing Title: **KEY CULTURAL HERITAGE CONSTRAINTS**  
 Sheet 7 of 11

Drawing Number	Project	Originator	Discipline	Location	Type	Role	Number	Drawn By	Checked By	Reviewed By	Approved By
MAY - ROD - ENV - ROUT - DR - EN - 1307							1307	MMC	FOK	BC	

Scale: 1:5,000 Date: June 2020 Job No: 19-157 Status: S3 - Review & Comment Rev: Sheet: 1 of





**Legend**

- Recorded Monuments
- ★ Protected Structures
- ▲ NIAH Sites
- Dublin City Protected Structures
- Demesne Landscapes
- 250m Study Area

**Railway Lines**

- Connolly to Newcome Junction Railway Line
- Dunboyne Railway Line
- Glasnevin Railway Line
- Glasnevin to Docklands Railway Line
- Maynooth Railway Line

**Level Crossing & Stations**

- Proposed Level Crossing Closure (Replacement Structure to be Provided as Required)
- Stations

**SOURCE OF INFORMATION:**  
 Dublin City Council  
 Fingal County Council  
 IAC Archaeology  
<https://webgis.archaeology.ie/historicenvironment/>  
<http://webgeo.kildarecoco.ie/public/planningsearch/171>  
<https://www.meath.ie/system/files/upload/Record%20of%20Protected%20Structures%20Grid%20Map.pdf>

REV.	DATE	Description	DRAWN BY	CHECKED BY	REVIEWED BY	APPROVED BY

© Irish Rail (2020). This drawing is confidential and the copyright in it is owned by Irish Rail. This drawing must not be either loaned, copied or otherwise reproduced in whole or in part or used for any purpose without the prior permission of Irish Rail.  
 © Ordnance Survey Ireland and Government of Ireland. All O.S. data used for plans are printed under " Copyright Ordnance Survey Ireland " Survey No. 0029720. All Aerial Data or OSi Lidar Data: Survey No. 2020/OSI/NMA\_100 (OSi Vector Data)  
 All elevations are in metres and relate to OSi Geoid Model (OSGM02) Mean Head as defined by existing Project Control.  
 All Co-ordinates are in Irish Transverse Mercator Grid (ITM) as defined by OSi active GPS station Tallaght College (TLG).

Client

NTA  
Udarás Náisiúnta Iompair  
National Transport Authority

Iarnród Éireann  
Irish Rail

CIE

Tionscaldal Éireann  
Project Ireland  
2040

Consultant

IDOM

G3

FIROD  
ROUZHAN & O'DONOVAN

DART+  
PROGRAMME

Project

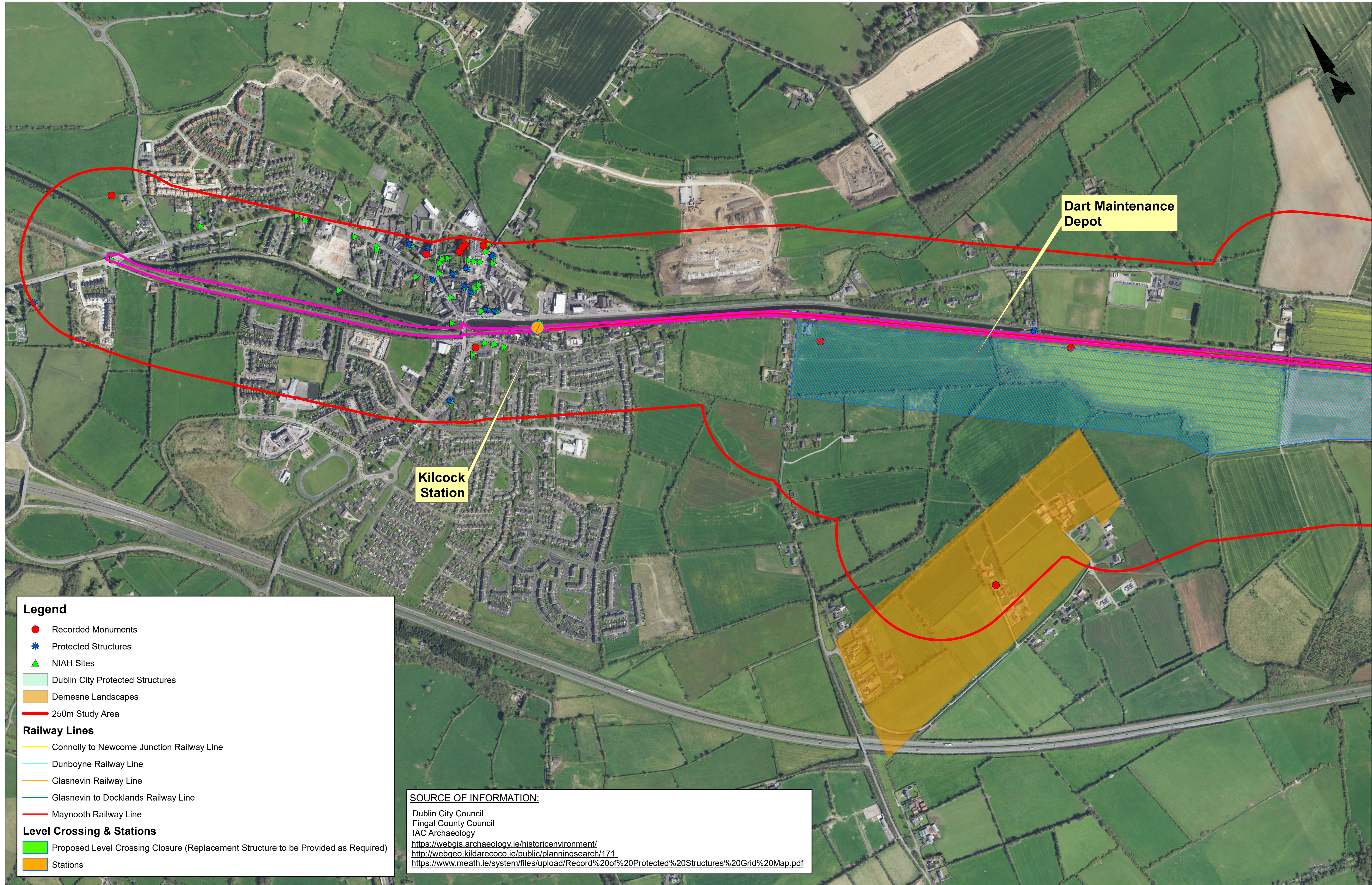
DART+  
MAYNOOTH LINE

Drawing Title: KEY CULTURAL HERITAGE CONSTRAINTS  
Sheet 8 of 11

Drawing Number	Project	Originator	Discipline	Location	Type	Role	Number	Drawn By	Checked By	Reviewed By	Approved By
MAY - ROD - ENV - ROUT - DR - EN - 1308	MAY	ROD	ENV	ROUT - DR	EN	1308	MMC	FO'K	BC		

Scale: 1:5,000    Date: June 2020    Job No: 19-157    Status: S3 - Review & Comment    Rev:    Sheet: 1 of





- Legend**
- Recorded Monuments
  - ✳ Protected Structures
  - ▲ NIAH Sites
  - Dublin City Protected Structures
  - Demesne Landscapes
  - 250m Study Area
- Railway Lines**
- Connolly to Newcome Junction Railway Line
  - Dunboyne Railway Line
  - Glasnevin Railway Line
  - Glasnevin to Docklands Railway Line
  - Maynooth Railway Line
- Level Crossing & Stations**
- Proposed Level Crossing Closure (Replacement Structure to be Provided as Required)
  - Stations

**SOURCE OF INFORMATION:**  
 Dublin City Council  
 Fingal County Council  
 IAC Archaeology  
<https://webgis.archaeology.ie/historicenvironment/>  
<http://webgeo.kildarecoco.ie/public/planningsearch/171>  
<https://www.meath.ie/system/files/upload/Record%20of%20Protected%20Structures%20Grid%20Map.pdf>

REV.	DATE	Description	DRAWN BY	CHECKED BY	REVIEWED BY	APPROVED BY

© Irish Rail (2020). This drawing is confidential and the copyright in it is owned by Irish Rail. This drawing must not be either loaned, copied or otherwise reproduced in whole or in part or used for any purpose without the prior permission of Irish Rail.  
 © Ordnance Survey Ireland and Government of Ireland. All O.S. data used for plans are printed under " Copyright Ordnance Survey Ireland " Survey No. 0029720  
 All elevations are in metres and relate to OSI Geoid Model (OSGM02) Mean Head as defined by existing Project Control.  
 All Co-ordinates are in Irish Transverse Mercator Grid (ITM) as defined by OSI active GPS station Tallaght College (TLG).

Client

Consultant

Project

Drawing Title

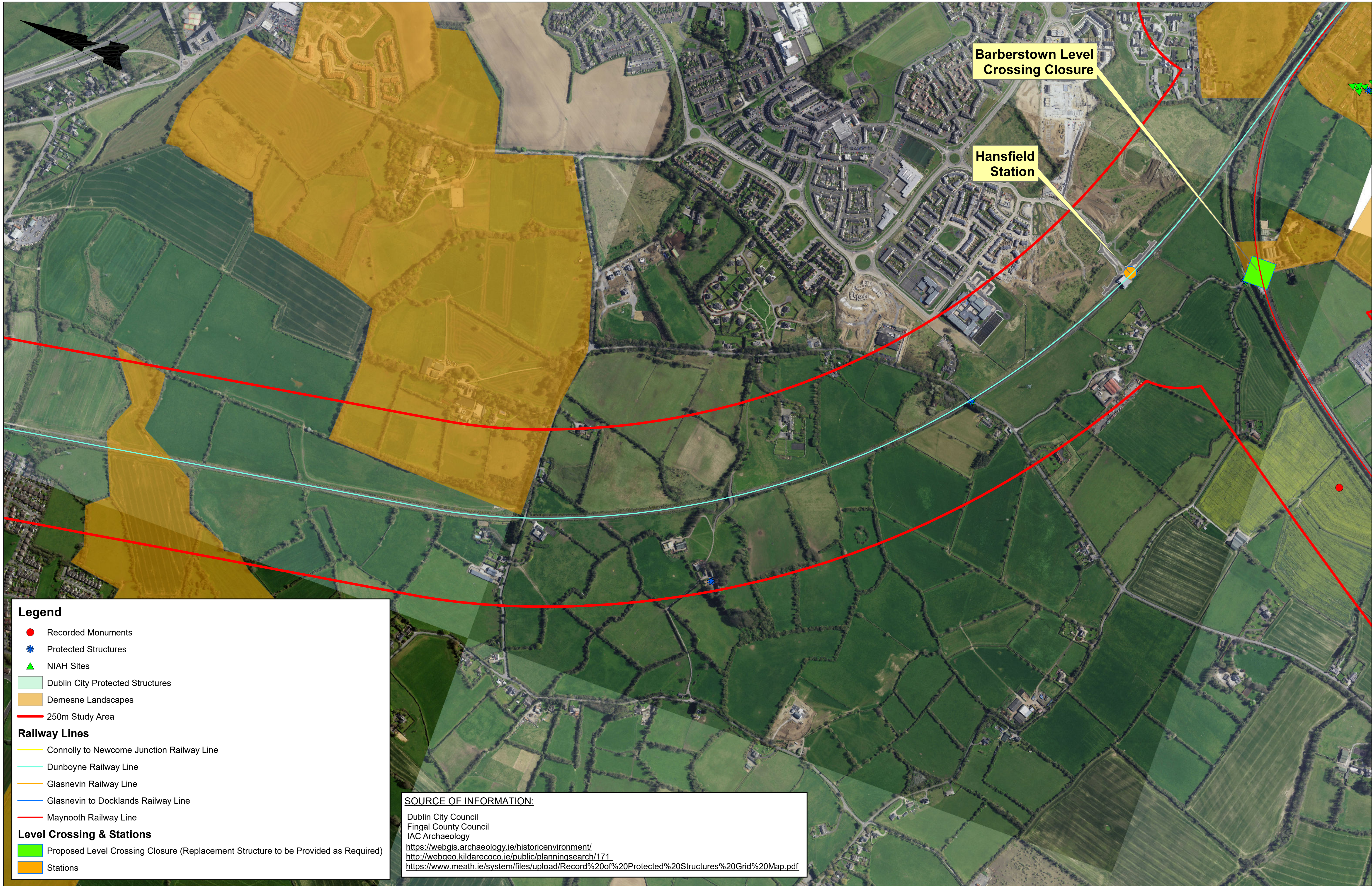
**KEY CULTURAL HERITAGE CONSTRAINTS**  
 Sheet 9 of 11

Drawing Number | Project | Originator | Discipline | Location | Type | Role | Number | Drawn By | Checked By | Reviewed By | Approved By

MAY - ROD - ENV - ROUT - DR - EN - 1309 | MMC | FO'K | BC

Scale: 1:5,000 | Date: June 2020 | Job No: 19-157 | Status: S3 - Review & Comment | Rev: | Sheet: 1 of





**Legend**

- Recorded Monuments
- ✳ Protected Structures
- ▲ NIAH Sites
- Dublin City Protected Structures
- Demesne Landscapes
- 250m Study Area

**Railway Lines**

- Connolly to Newcome Junction Railway Line
- Dunboyne Railway Line
- Glasnevin Railway Line
- Glasnevin to Docklands Railway Line
- Maynooth Railway Line

**Level Crossing & Stations**

- Proposed Level Crossing Closure (Replacement Structure to be Provided as Required)
- Stations

**SOURCE OF INFORMATION:**  
 Dublin City Council  
 Fingal County Council  
 IAC Archaeology  
<https://webgis.archaeology.ie/historicenvironment/>  
<http://webgeo.kildarecoco.ie/public/planningsearch/171>  
<https://www.meath.ie/system/files/upload/Record%20of%20Protected%20Structures%20Grid%20Map.pdf>

REV	DATE	Description	DRAWN BY	CHECKED BY	REVIEWED BY	APPROVED BY

© Irish Rail (2020). This drawing is confidential and the copyright in it is owned by Irish Rail. This drawing must not be either loaned, copied or otherwise reproduced in whole or in part or used for any purpose without the prior permission of Irish Rail.  
 © Ordnance Survey Ireland and Government of Ireland. All O.S. data used for plans are printed under "Copyright Ordnance Survey Ireland".  
 Survey No. 0029720 | OSI Aerial Data or OSI Lidar Data | Survey No. 2020/OS/LNMA\_180 (OSi Vector Data)  
 All elevations are in metres and relate to OSI Geoid Model (OSGM02) Mean Head as defined by existing Project Control.  
 All Co-ordinates are in Irish Transverse Mercator Grid (ITM) as defined by OSI active GPS station Tallaght College (TLG).

Client

Consultant

Project

Drawing Title

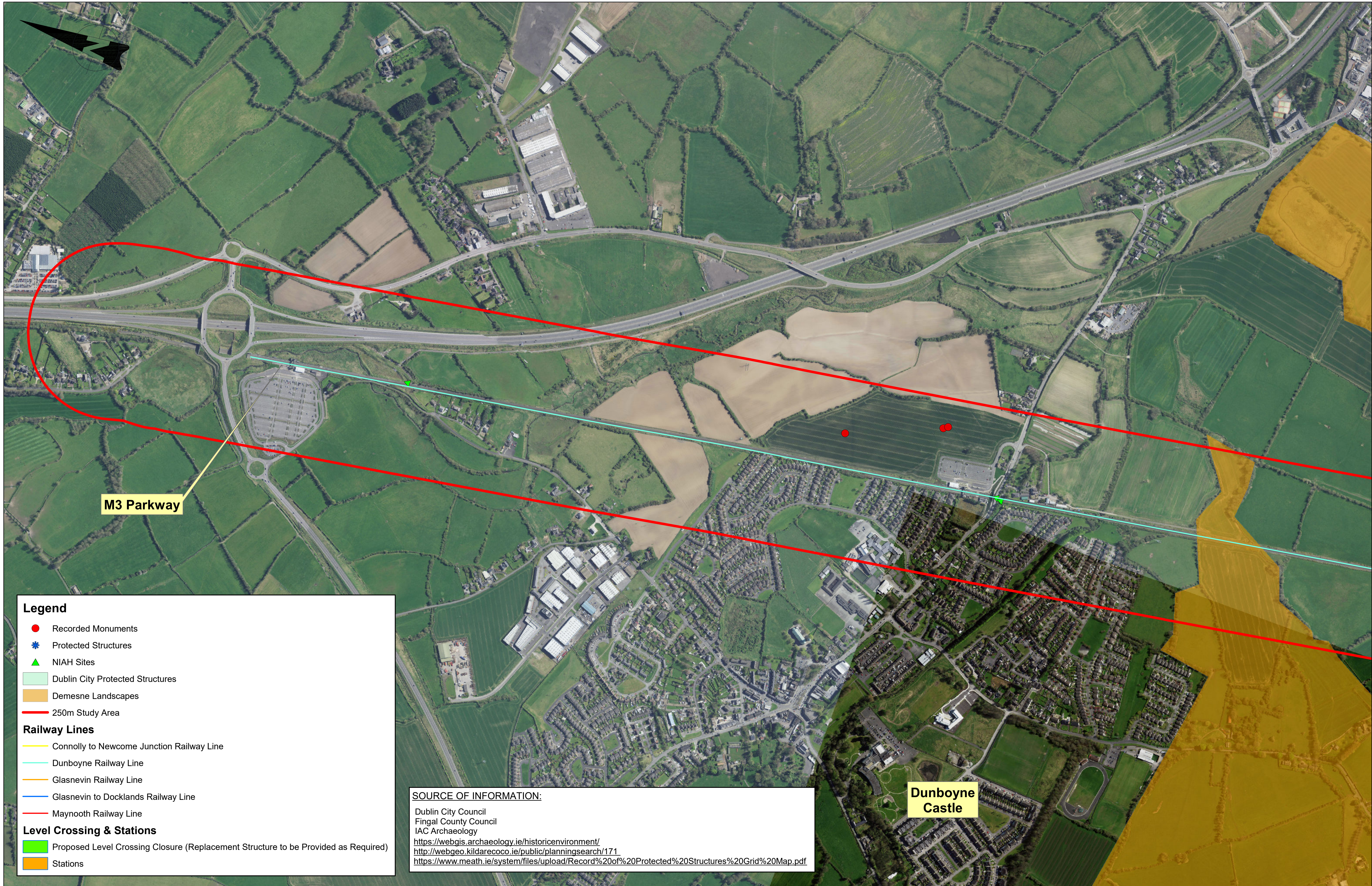
## KEY CULTURAL HERITAGE CONSTRAINTS

Sheet 10 of 11

DART+  
MAYNOOTH LINE

Drawing Number	Project	Originator	Discipline	Location	Type	Role	Number	Drawn By	Checked By	Reviewed By	Approved By
	MAY - ROD	ENV	ROUT	DR	EN	1310		MMC	FO'K	BC	
Scale:	1:5,000	Date:	June 2020	Job No.:	19-157	Status:	S3 - Review & Comment	Rev.:		Sheet:	1 of 11





**Legend**

- Recorded Monuments
- ★ Protected Structures
- ▲ NIAH Sites
- Dublin City Protected Structures
- Demesne Landscapes
- 250m Study Area

**Railway Lines**

- Connolly to Newcome Junction Railway Line
- Dunboyne Railway Line
- Glasnevin Railway Line
- Glasnevin to Docklands Railway Line
- Maynooth Railway Line

**Level Crossing & Stations**

- Proposed Level Crossing Closure (Replacement Structure to be Provided as Required)
- Stations

**SOURCE OF INFORMATION:**  
 Dublin City Council  
 Fingal County Council  
 IAC Archaeology  
<https://webgis.archaeology.ie/historicenvironment/>  
<http://webgeo.kildarecoco.ie/public/planningsearch/171>  
<https://www.meath.ie/system/files/upload/Record%20of%20Protected%20Structures%20Grid%20Map.pdf>

REV.	DATE	Description	DRAWN BY	CHECKED BY	REVIEWED BY	APPROVED BY

© Irish Rail (2020). This drawing is confidential and the copyright in it is owned by Irish Rail. This drawing must not be either loaned, copied or otherwise reproduced in whole or in part or used for any purpose without the prior permission of Irish Rail.  
 © Ordnance Survey Ireland and Government of Ireland. All O.S. data used for plans are printed under "Copyright Ordnance Survey Ireland" Survey No. 0029720. All Aerial Data or OSi Lidar Data: Survey No. 2020/OSI/NMA\_100 (OSi Vector Data)  
 All elevations are in metres and relate to OSi Geoid Model (OSGM02) Mean Head as defined by existing Project Control.  
 All Co-ordinates are in Irish Transverse Mercator Grid (ITM) as defined by OSi active GPS station Tallaght College (TLG).

Client

Consultant

Project

Drawing Title

**KEY CULTURAL HERITAGE CONSTRAINTS**  
 Sheet 11 of 11

Drawing Number | Project | Originator | Discipline | Location | Type | Role | Number | Drawn By | Checked By | Reviewed By | Approved By

MAY - ROD - ENV - ROUT - DR - EN - 1311 | MMC | FO'K | BC

Scale: 1:5,000 | Date: June 2020 | Job No: 19-157 | Status: S3 - Review & Comment | Rev: | Sheet: 1 of