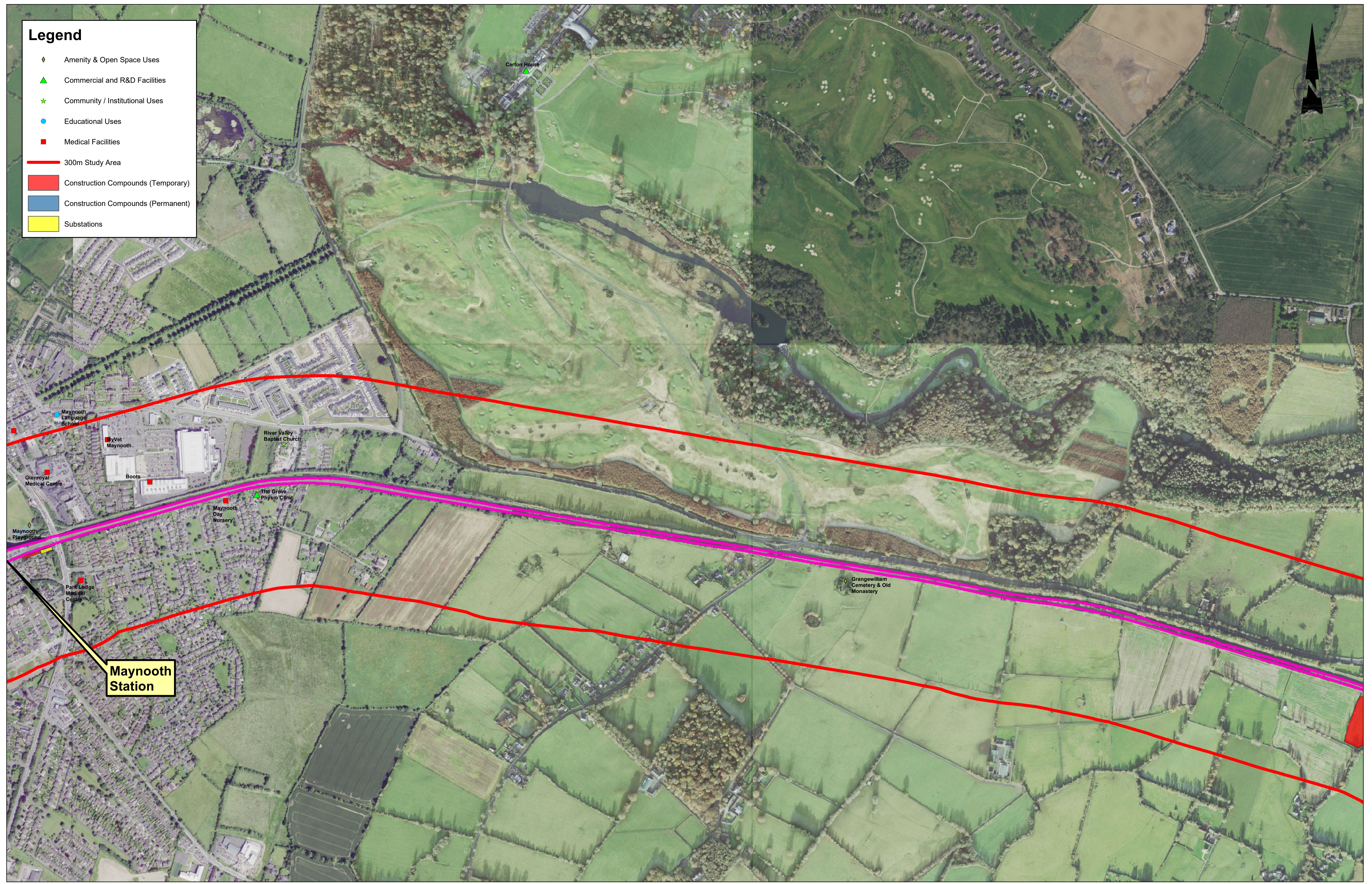


Legend

- ◆ Amenity & Open Space Uses
- ▲ Commercial and R&D Facilities
- ★ Community / Institutional Uses
- Educational Uses
- Medical Facilities
- 300m Study Area
- Construction Compounds (Temporary)
- Construction Compounds (Permanent)
- Substations



V 02	June 2021	OSR - Second Issue	MMC	FOK	BC
V 01	May 2020	OSR - Consultation	MMC	FOK	BC
REV.	DATE	DESCRIPTION	PRODUCED BY / REVIEWED BY / APPROVED BY		

© Irish Rail (2021). This drawing is confidential and the copyright in it is owned by Irish Rail. This drawing must not be either loaned, copied or otherwise reproduced in whole or in part or used for any purpose without the prior permission of Irish Rail.
 © Ordnance Survey Ireland and Government of Ireland. All O.S. data used for plans are printed under "Copyright Ordnance Survey Ireland".
 Survey No. 0039721 (OSI Aerial Data or OSI LIDAR Data) & Survey No. 2021/OSI_NMA_180 (OSI Vector Data).
 All elevations are in metres and relate to OSI Geoid Model (OSGM02) Mean Head as defined by existing Project Control.
 All co-ordinates are in Irish Transverse Mercator Grid (ITM) as defined by OSI active GPS station Tallaght College (TLG).

Client

Tionscald Eireann
Project Ireland
2040

NTA
Údarás Náisiúnta Iompar
National Transport Authority

Consultant

IDOM

G3

IRÓD
ROUGHAN & O'DONOVAN

Project

Iarnród Éireann
Irish Rail

DART+
West

Drawing Title

OPTION SELECTION
LAND USES (EDUCATIONAL, COMMUNITY & COMMERCIAL USES)
Sheet 7 of 11

Scale: 1:5,000

Drawing Number | Project | Originator | Discipline | Location | Type | Role | Number | Phase

MAY | MDC | ENV | ROUT | DR | V | 1507 | B

Date: May 2021 | Job No: P/101086 | Status: S4 - Suitable for Acceptance | Rev: V 02 | Sheet: 7 of 11