

## Legend

- Engineering Elements
- Buffers: 50m, 100m, 200m, 300m
- Rail Network Centreline
- Dublin City Development Plan 2016-2022
  - Designated Conservation Areas
    - Z2 - To protect & improve the amenities of residential conservation areas
    - Z9 - To preserve, provide & improve recreational amenity and open space/green networks
    - Z11 - To protect & improve canal, river & coastal amenities
  - Views & Prospects
- South Dublin County Development Plan 2016-2022
  - OS - To preserve and provide for open space and recreational amenities
  - Tree Preservation Order
- Kildare County Development Plan / Celbridge Local Area Plan 2017-2023
  - Landscape Character Area (High Sensitivity)
  - Designated Landscape – Area of High Amenity
  - Historic Landscape Area
  - Scenic Routes
  - Protected Views
  - Protected Views
  - County / City Boundary



© OpenStreetMap (and) contributors, CC-BY-SA, Esri, HERE, Garmin, (c) OpenStreetMap contributors, and the GIS user community

© Irish Rail (2021). This drawing is confidential and the copyright in it is owned by Irish Rail. This drawing must not be either loaned, copied or otherwise reproduced in whole or in part or used for any purpose without the prior permission of Irish Rail.

The contents of this publication are the sole responsibility of Iarnród Éireann and do not necessarily reflect the opinion of the European Union



Rev	Date	Dm	Chk'd	App'd	Description
x03	04/10/2021	NR	CR	AG	Description
x02	01/03/2021	NAR	CR	AG	Description
x01	12/11/2020	NON	SK	AG	Description

Client	Iarnród Éireann Irish Rail		Engineering Designer	ATKINS Supported by: RPS	
Date	06/10/2021	Scale	1:10,000 @ A4	Drawn	NR
Project Code	5199586	Issuer	TTA/RPS	Checked	CR
		OMS Code		Approved	AG

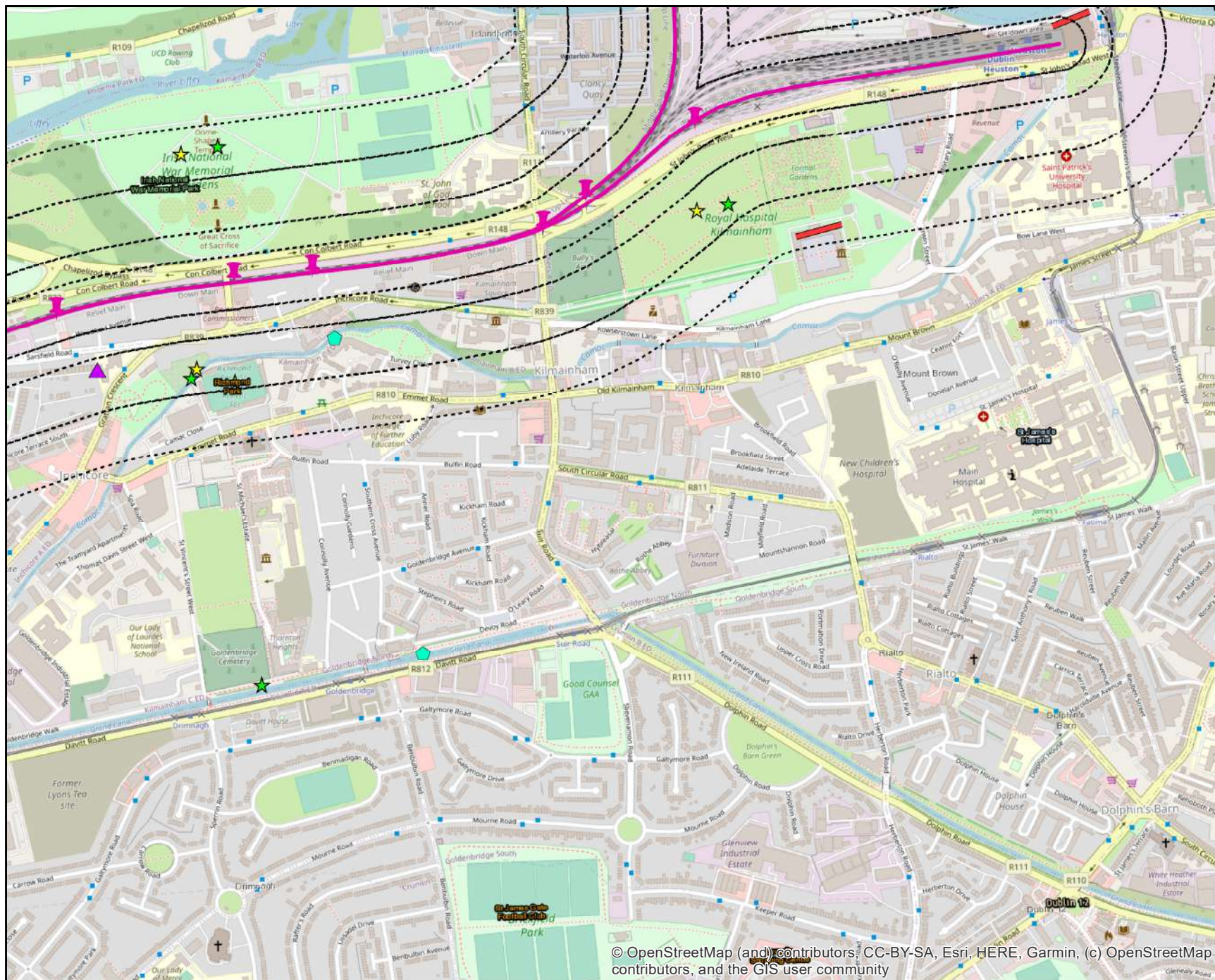
Project Title	DART + SOUTH WEST				
Drawing Title	Landscape Constraints (Map 01 of 11)				
Drawing File Name	DP-04-23-DWG-EV-TTA-9861	Version	v03	Status	S3

DO NOT SCALE USE FIGURED DIMENSIONS ONLY









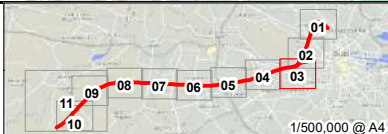
## Legend

- Engineering Elements
- Buffers: 50m, 100m, 200m, 300m
- Rail Network Centreline
- Dublin City Development Plan 2016-2022
  - Designated Conservation Areas
    - Z2 - To protect & improve the amenities of residential conservation areas
    - Z9 - To preserve, provide & improve recreational amenity and open space/green networks
    - Z11 - To protect & improve canal, river & coastal amenities
  - Views & Prospects
- South Dublin County Development Plan 2016-2022
  - OS - To preserve and provide for open space and recreational amenities
  - Tree Preservation Order
- Kildare County Development Plan / Celbridge Local Area Plan 2017-2023
  - Landscape Character Area (High Sensitivity)
  - Designated Landscape – Area of High Amenity
  - Historic Landscape Area
  - Scenic Routes
  - Protected Views
  - Protected Views
  - County / City Boundary



© OpenStreetMap (and) contributors, CC-BY-SA, Esri, HERE, Garmin, (c) OpenStreetMap contributors, and the GIS user community

© Irish Rail (2021). This drawing is confidential and the copyright in it is owned by Irish Rail. This drawing must not be either loaned, copied or otherwise reproduced in whole or in part or used for any purpose without the prior permission of Irish Rail.  
The contents of this publication are the sole responsibility of Iarnród Éireann and do not necessarily reflect the opinion of the European Union



Rev	Date	Dn	Chkd	Appd	Description
v03	04/10/2021	NR	CR	AG	Description
v02	01/03/2021	NAR	CR	AG	Description
v01	12/11/2020	NON	SK	AG	Description

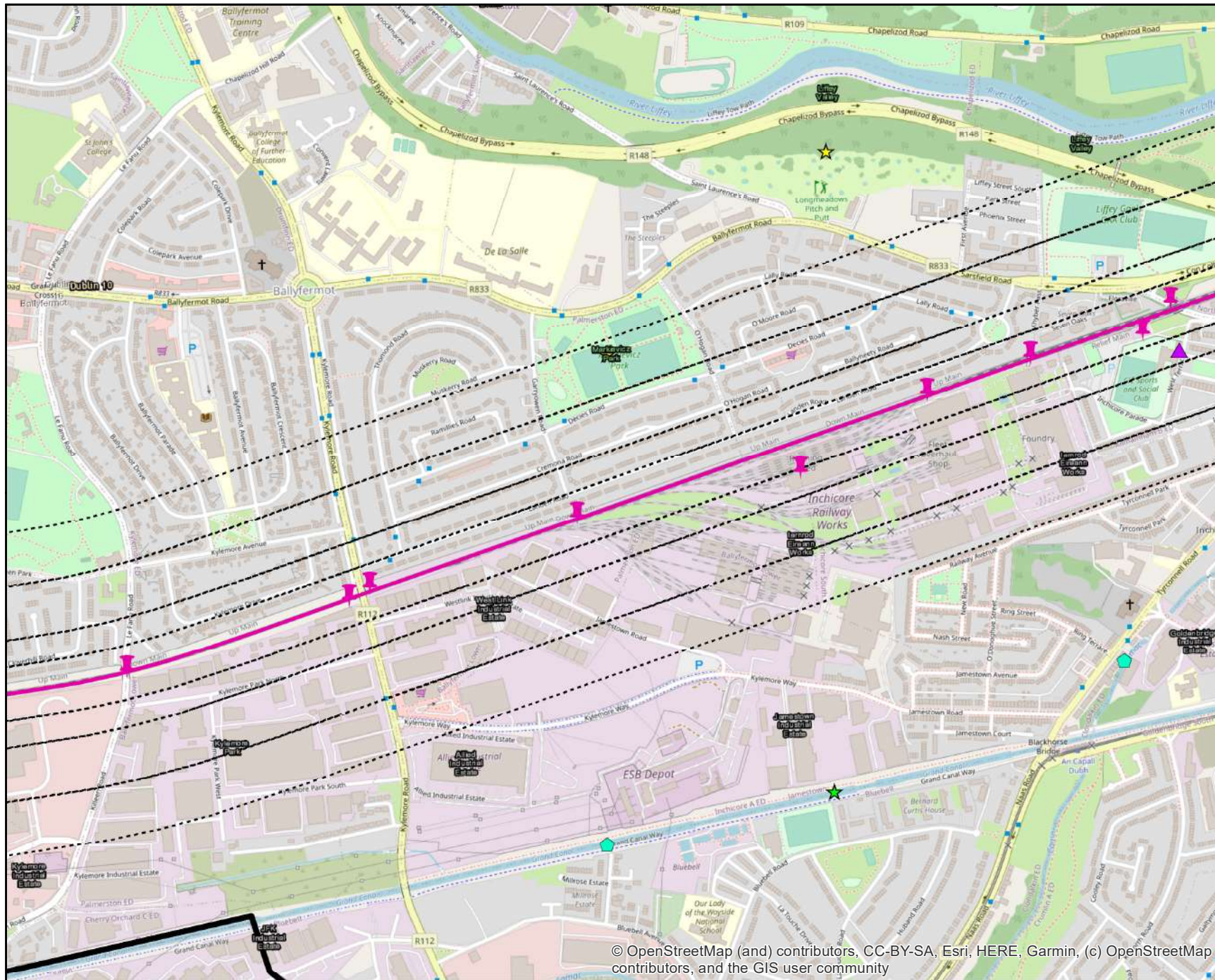


Client	Iarnród Éireann
Date	06/10/2021
Scale	1:10,000 @ A4
Project Code	5199586
Issue	TTA/RPS
Engineering Designer	ATKINS
Supported by	RPS
Drawn	NR
Checked	CR
Approved	AG
OMS Code	

Project Title	DART + SOUTH WEST
Drawing Title	Landscape Constraints (Map 03 of 11)
Drawing File Name	DP-04-23-DWG-EV-TTA-9861
Version	v03
Status	S3

DO NOT SCALE USE FIGURED DIMENSIONS ONLY





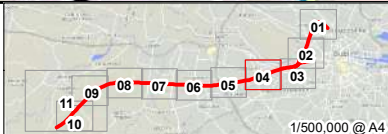
## Legend

- Engineering Elements
- Buffers: 50m, 100m, 200m, 300m
- Rail Network Centreline
- Dublin City Development Plan 2016-2022
  - Designated Conservation Areas
    - Z2 - To protect & improve the amenities of residential conservation areas
    - Z9 - To preserve, provide & improve recreational amenity and open space/green networks
    - Z11 - To protect & improve canal, river & coastal amenities
  - Views & Prospects
    - OS - To preserve and provide for open space and recreational amenities
    - Tree Preservation Order
- Kildare County Development Plan / Celbridge Local Area Plan 2017-2023
  - Landscape Character Area (High Sensitivity)
  - Designated Landscape – Area of High Amenity
  - Historic Landscape Area
  - Scenic Routes
  - Protected Views
  - Protected Views
  - County / City Boundary



© OpenStreetMap (and) contributors, CC-BY-SA, Esri, HERE, Garmin, (c) OpenStreetMap contributors, and the GIS user community

© Irish Rail (2021). This drawing is confidential and the copyright in it is owned by Irish Rail. This drawing must not be either loaned, copied or otherwise reproduced in whole or in part or used for any purpose without the prior permission of Irish Rail.  
The contents of this publication are the sole responsibility of Iarnród Éireann and do not necessarily reflect the opinion of the European Union



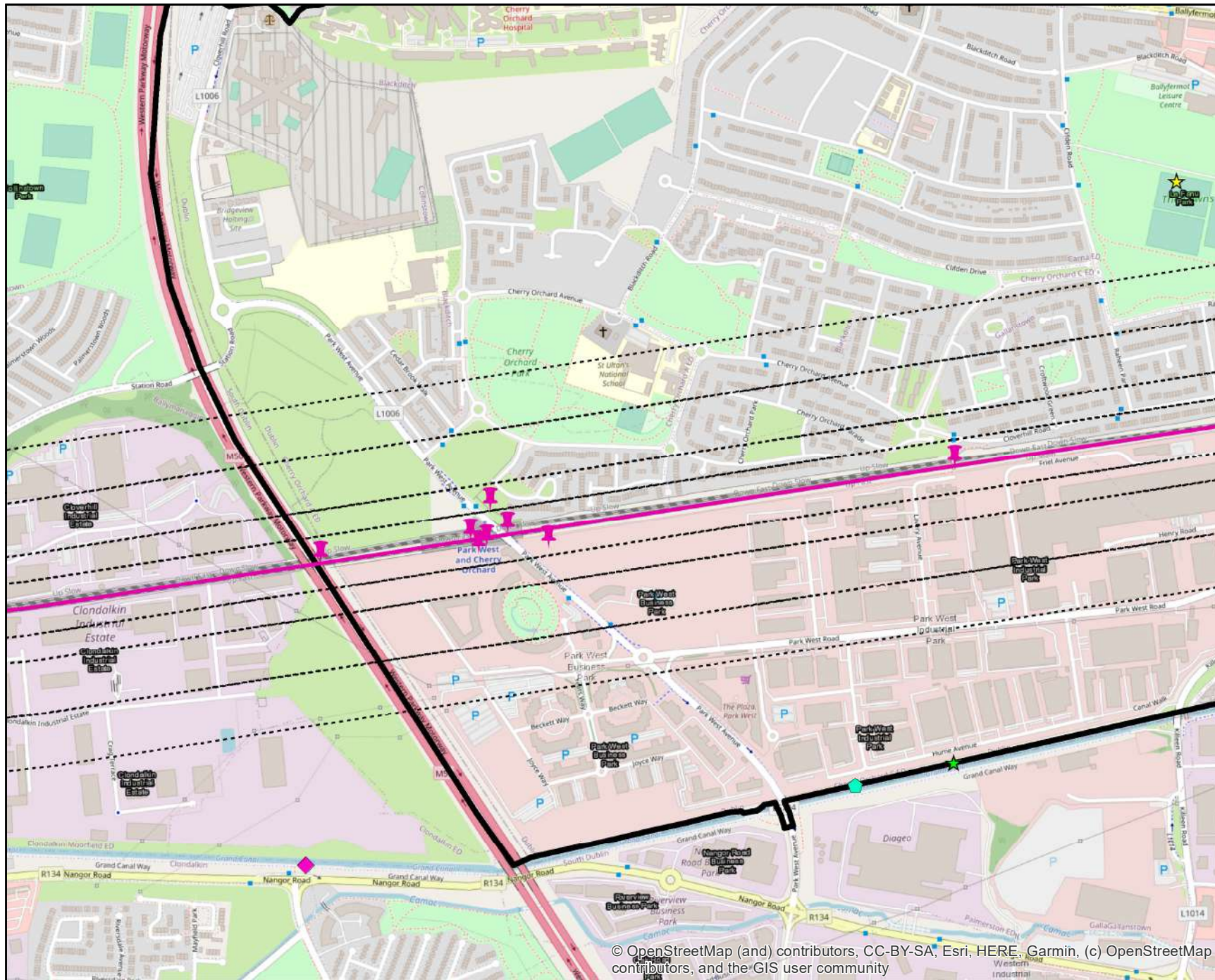
Rev	Date	Dm	Chk'd	App'd	Description
v01	04/10/2021	NR	CR	AG	Description
v02	01/03/2021	NAR	CR	AG	Description
v01	12/11/2020	NON	SK	AG	Description

Client	Iarnród Éireann Irish Rail
Engineering Designer	ATKINS TYPDA Supported by: RPS
Date	06/10/2021
Scale	1:10,000 @ A4
Project Code	5199586
Issuer	TTA/RPS
Drawn	NR
Checked	CR
Approved	AG
OMS Code	

Project Title	DART + SOUTH WEST		
Drawing Title	Landscape Constraints (Map 04 of 11)		
Drawing File Name	DP-04-23-DWG-EV-TTA-9861	Version	v03
Status	S3		

DO NOT SCALE USE FIGURED DIMENSIONS ONLY





## Legend

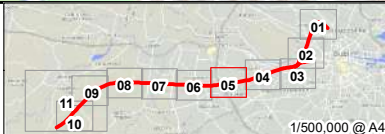
- Engineering Elements
- Buffers: 50m, 100m, 200m, 300m
- Rail Network Centrelines
- Dublin City Development Plan 2016-2022**
  - Designated Conservation Areas
    - Z2 - To protect & improve the amenities of residential conservation areas
    - Z9 - To preserve, provide & improve recreational amenity and open space/green networks
    - Z11 - To protect & improve canal, river & coastal amenities
  - Views & Prospects
- South Dublin County Development Plan 2016-2022**
  - OS - To preserve and provide for open space and recreational amenities
  - Tree Preservation Order
- Kildare County Development Plan / Celbridge Local Area Plan 2017-2023**
  - Landscape Character Area (High Sensitivity)
  - Designated Landscape – Area of High Amenity
  - Historic Landscape Area
  - Scenic Routes
  - Protected Views
  - Protected Views
  - County / City Boundary



© OpenStreetMap (and) contributors, CC-BY-SA, Esri, HERE, Garmin, (c) OpenStreetMap contributors, and the GIS user community

© Irish Rail (2021). This drawing is confidential and the copyright in it is owned by Irish Rail. This drawing must not be either loaned, copied or otherwise reproduced in whole or in part or used for any purpose without the prior permission of Irish Rail.

The contents of this publication are the sole responsibility of Iarnród Éireann and do not necessarily reflect the opinion of the European Union



Rev	Date	Drn	Chk'd	App'd	Description
x03	04/10/2021	NR	CR	AG	Description
x02	01/03/2021	NAR	CR	AG	Description
x01	12/11/2020	NON	SK	AG	Description

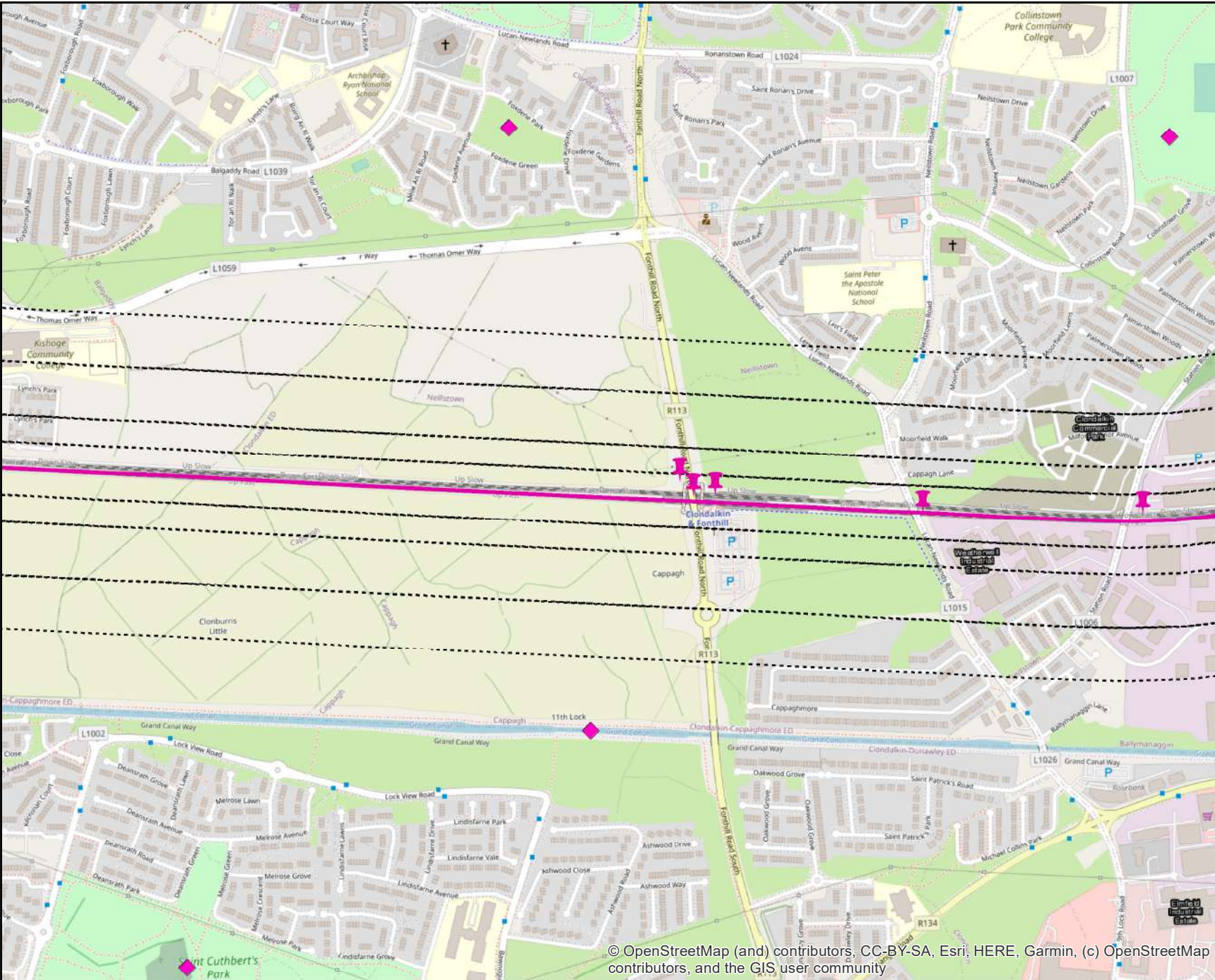
Client	Iarnród Éireann Irish Rail
Date	06/10/2021
Scale	1:10,000 @ A4
Project Code	5199586
Issuer	TTA/RPS

Engineering Designer	ATKINS
Supported by:	RPS
Drawn	NR
Checked	CR
Approved	AG
OMS Code	

Project Title	DART + SOUTH WEST		
Drawing Title	Landscape Constraints (Map 05 of 11)		
Drawing File Name	DP-04-23-DWG-EV-TTA-9861	Version	v03
Status	S3		

DO NOT SCALE USE FIGURED DIMENSIONS ONLY





### Legend

Engineering Elements

Buffers: 50m, 100m, 200m, 300m

Rail Network Centreline

#### Dublin City Development Plan 2016-2022

Designated Conservation Areas

Z2 - To protect & improve the amenities of residential conservation areas

Z9 - To preserve, provide & improve recreational amenity and open space/green networks

Z11 - To protect & improve canal, river & coastal amenities

#### South Dublin County Development Plan 2016-2022

OS - To preserve and provide for open space and recreational amenities

Tree Preservation Order

#### Kildare County Development Plan / Celbridge Local Area Plan 2017-2023

Landscape Character Area (High Sensitivity)

Designated Landscape – Area of High Amenity

Historic Landscape Area

Scenic Routes

Protected Views

Protected Views

County / City Boundary

© Irish Rail (2021). This drawing is confidential and the copyright in it is owned by Irish Rail. This drawing must not be either loaned, copied or otherwise reproduced in whole or in part or used for any purpose without the prior permission of Irish Rail.

The contents of this publication are the sole responsibility of Iarnród Éireann and do not necessarily reflect the opinion of the European Union

Rev	Date	Dm	Chkd	Appd	Description
v03	04/10/2021	NR	CR	AG	Description
v02	01/03/2021	NAR	CR	AG	Description
v01	12/11/2020	NON	SK	AG	Description

Rev	Date	Dm	Chkd	Appd	Description
v03	04/10/2021	NR	CR	AG	Description
v02	01/03/2021	NAR	CR	AG	Description
v01	12/11/2020	NON	SK	AG	Description

Client

Date 06/10/2021

Scale 1:10,000 @ A4

Project Code 5199586

Issued TTA/RPS

Engineering Designer

Drawn NR

Checked CR

Approved AG

Supported by

TPSA

RPS

Project Title

DART + SOUTH WEST

Drawing Title

Landscape Constraints (Map 06 of 11)

Drawing File Name

DP-04-23-DWG-EV-TTA-9861

Version

v03

Status

S3

DO NOT SCALE USE FIGURED DIMENSIONS ONLY





Rev	Date	Drn	Chkd	App'd	Description
v03	04/10/2021	NR	CR	AG	Description
v02	01/03/2021	NAR	CR	AG	Description
v01	12/11/2020	NO/N	SK	AG	Description

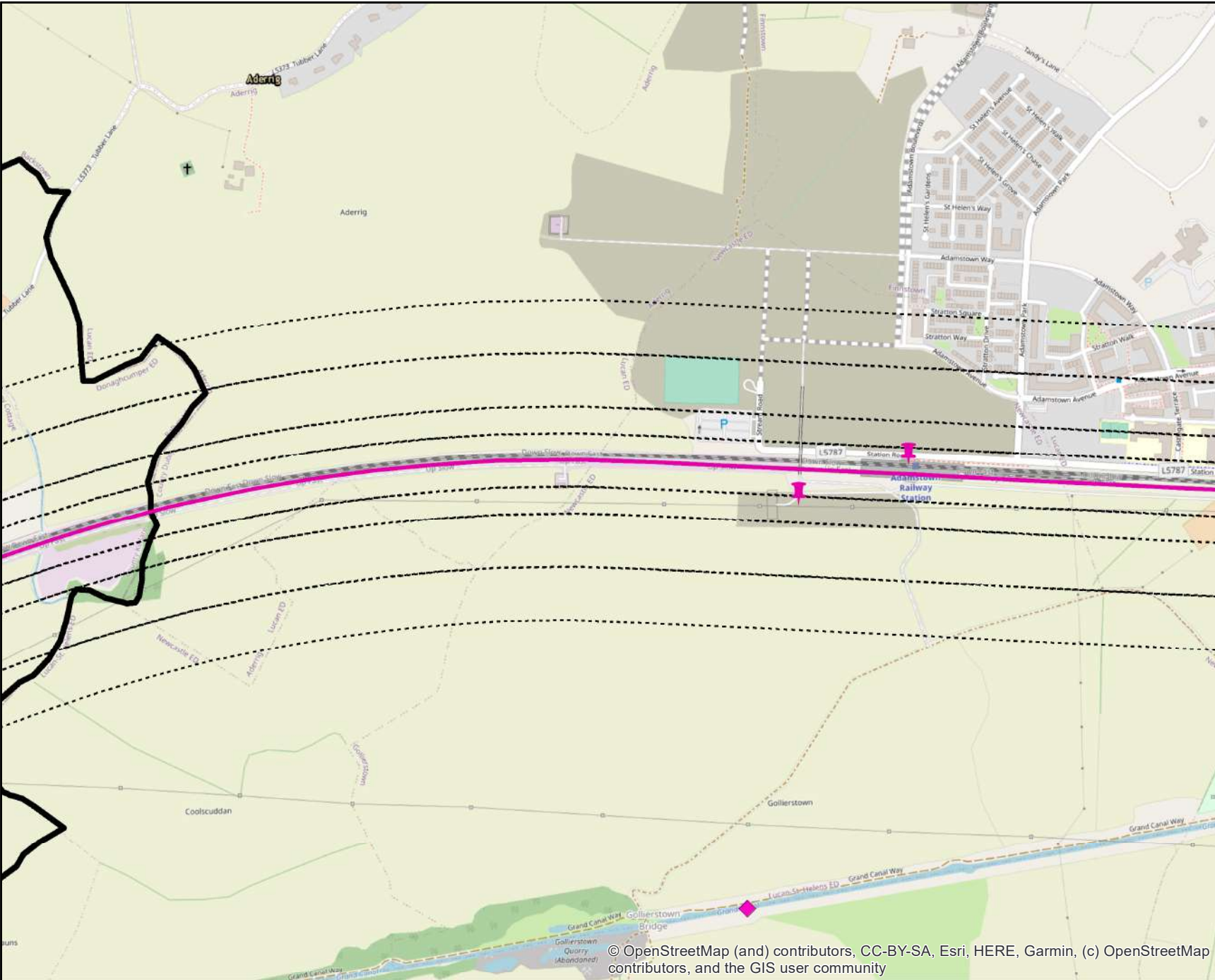
Client		Engineering Designer		
		  		
		Supported by: 		
Date	06/10/2021	Scale	1:10,000	@ A4
Project Code	5199586	Issuer	TTA/RPS	
		QMS Code		

**DO NOT SCALE USE FIGURED DIMENSIONS ONLY**

- 

Drawing Title			
<h1 style="text-align: center;">Landscape Constraints</h1> <h2 style="text-align: center;">(Map 07 of 11)</h2>			
Drawing File Name	DP-04-23-DWG-EV-TTA-9861	Version v03	Status S3





### Legend

- Engineering Elements
- Buffers: 50m, 100m, 200m, 300m
- Rail Network Centrelines

#### Dublin City Development Plan 2016-2022

- Designated Conservation Areas
  - Z2 - To protect & improve the amenities of residential conservation areas
  - Z9 - To preserve, provide & improve recreational amenity and open space/green networks
  - Z11 - To protect & improve canal, river & coastal amenities
- Views & Prospects

#### South Dublin County Development Plan 2016-2022

- OS - To preserve and provide for open space and recreational amenities
- Tree Preservation Order

#### Kildare County Development Plan / Celbridge Local Area Plan 2017-2023

- Landscape Character Area (High Sensitivity)
- Designated Landscape – Area of High Amenity
- Historic Landscape Area
- Scenic Routes
- Protected Views
- Protected Views
- County / City Boundary

© OpenStreetMap (and) contributors, CC-BY-SA, Esri, HERE, Garmin, (c) OpenStreetMap contributors, and the GIS user community

© Irish Rail (2021). This drawing is confidential and the copyright in it is owned by Irish Rail. This drawing must not be either loaned, copied or otherwise reproduced in whole or in part or used for any purpose without the prior permission of Irish Rail.

The contents of this publication are the sole responsibility of Iarnród Éireann and do not necessarily reflect the opinion of the European Union

Rev	Date	Dm	Chk'd	App'd	Description
x03	04/10/2021	NR	CR	AG	Description
x02	01/03/2021	NAR	CR	AG	Description
x01	12/11/2020	NON	SK	AG	Description

Client: **Iarnród Éireann Irish Rail**

Date: 06/10/2021 Scale: 1:10,000 @ A4

Project Code: 5199586 Issuer: TTA/RPS

Engineering Designer: **ATKINS**

Supported by: **rps**

Drawn	Checked	Approved
NR	CR	AG

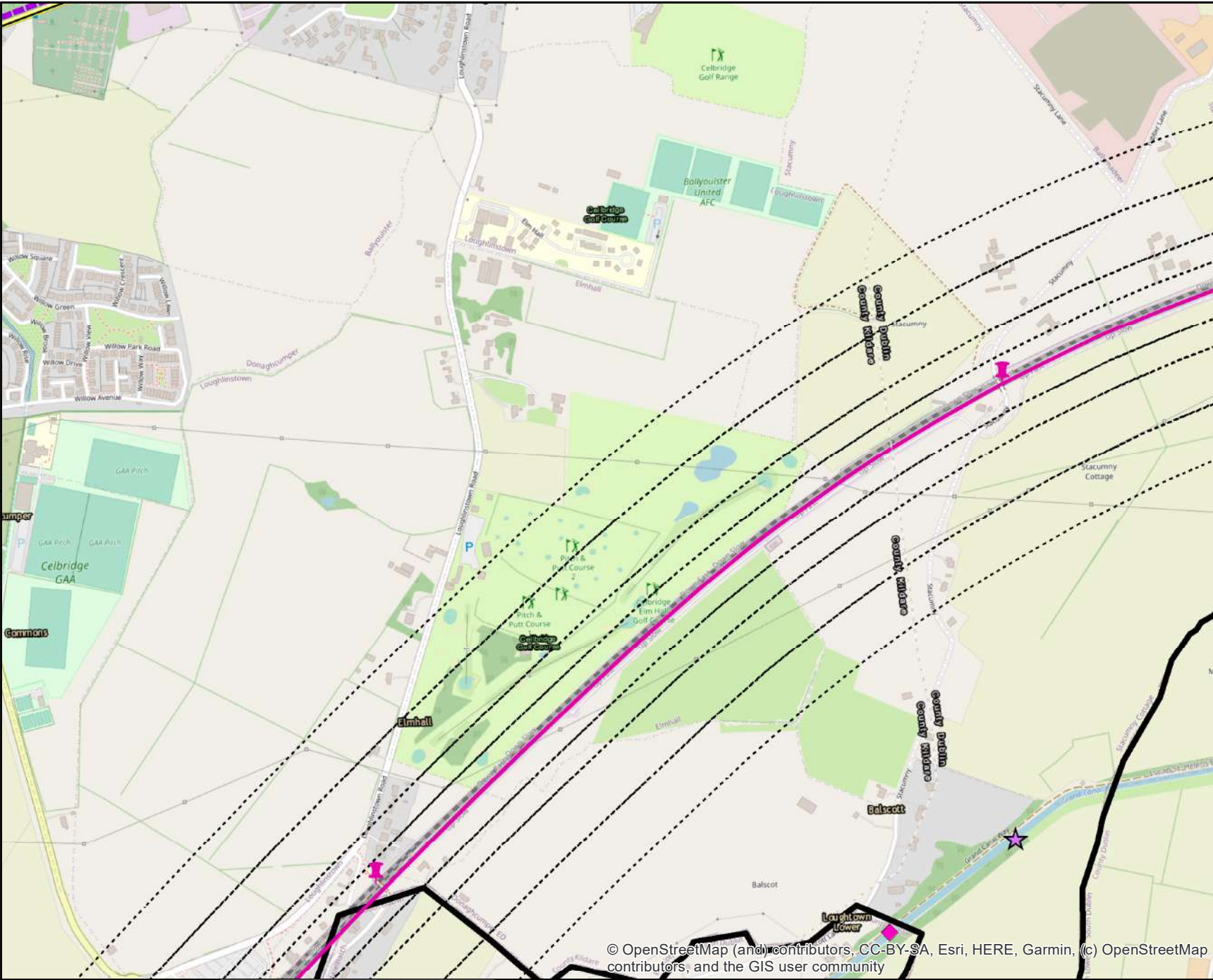
QMS Code

Project Title: **DART + SOUTH WEST**

Drawing Title: **Landscape Constraints (Map 08 of 11)**

Drawing File Name: **DP-04-23-DWG-EV-TTA-9861** Version: v03 Status: S3





### Legend

Engineering Elements

Buffers: 50m, 100m, 200m, 300m

Rail Network Centreline

#### Dublin City Development Plan 2016-2022

Designated Conservation Areas

Z2 - To protect & improve the amenities of residential conservation areas

Z9 - To preserve, provide & improve recreational amenity and open space/green networks

Z11 - To protect & improve canal, river & coastal amenities

#### South Dublin County Development Plan 2016-2022

OS - To preserve and provide for open space and recreational amenities

Tree Preservation Order

#### Kildare County Development Plan / Celbridge Local Area Plan 2017-2023

Landscape Character Area (High Sensitivity)

Designated Landscape – Area of High Amenity

Historic Landscape Area

Scenic Routes

Protected Views

Protected Views

County / City Boundary

© Irish Rail (2021). This drawing is confidential and the copyright in it is owned by Irish Rail. This drawing must not be either loaned, copied or otherwise reproduced in whole or in part or used for any purpose without the prior permission of Irish Rail.

The contents of this publication are the sole responsibility of Iarnród Éireann and do not necessarily reflect the opinion of the European Union

Rev	Date	Dm	Chk'd	App'd	Description
x03	04/10/2021	NR	CR	AG	Description
x02	01/03/2021	NAR	CR	AG	Description
x01	12/11/2020	NON	SK	AG	Description

Client

Supported by:

Date

Project Code

Scale

Issue

Drawn

Checked

Approved

Engineering Designer

ATKINS

Supported by:

TPSA

RPS

QMS Code

TTA/RPS

Project Title

DART + SOUTH WEST

Drawing Title

Landscape Constraints (Map 09 of 11)

Drawing File Name

DP-04-23-DWG-EV-TTA-9861

Version

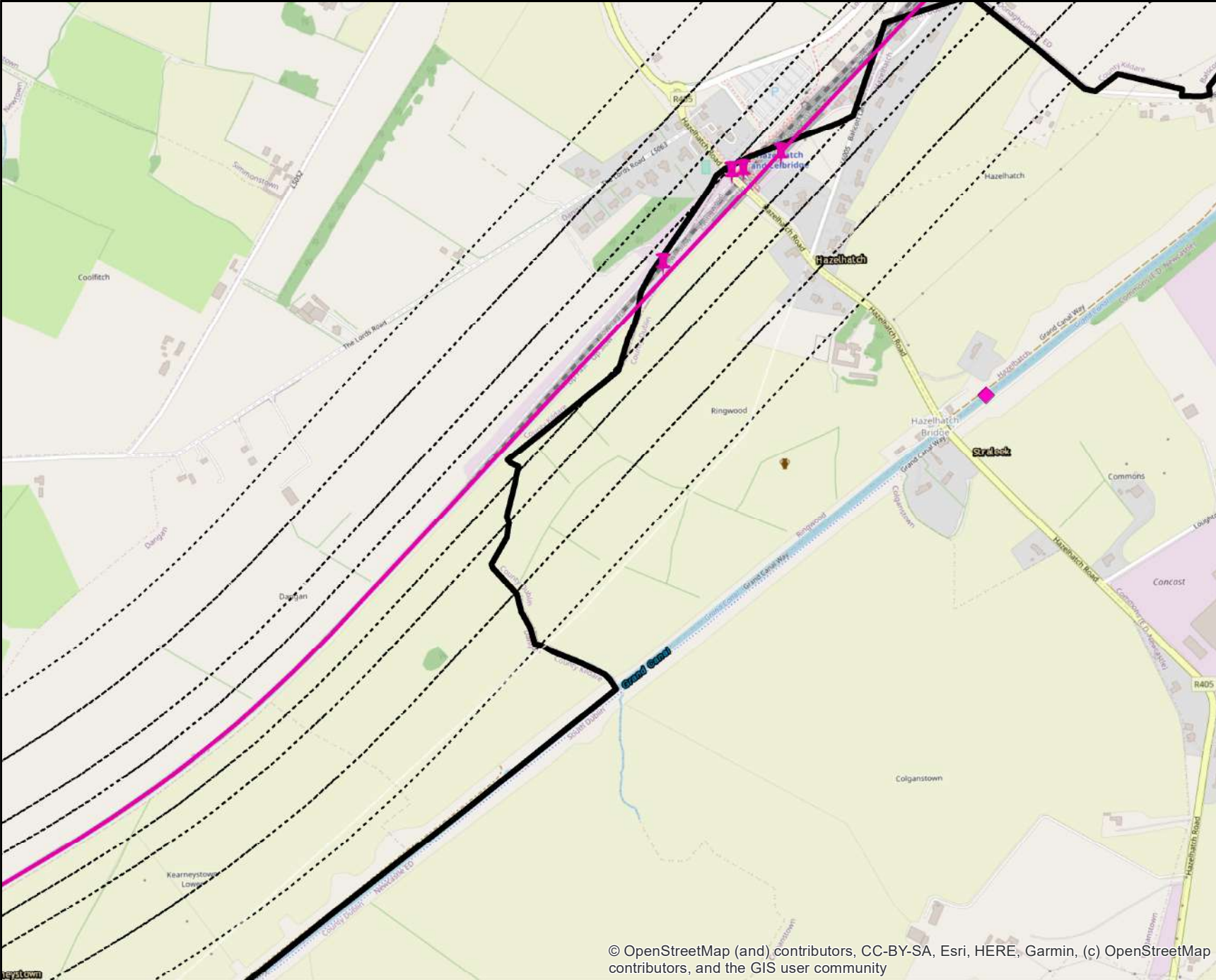
v03

Status

S3

DO NOT SCALE USE FIGURED DIMENSIONS ONLY





### Legend

Engineering Elements

Buffers: 50m, 100m, 200m, 300m

Rail Network Centrelines

#### Dublin City Development Plan 2016-2022

Designated Conservation Areas

Z2 - To protect & improve the amenities of residential conservation areas

Z9 - To preserve, provide & improve recreational amenity and open space/green networks

Z11 - To protect & improve canal, river & coastal amenities

Views & Prospects

#### South Dublin County Development Plan 2016-2022

OS - To preserve and provide for open space and recreational amenities

Tree Preservation Order

#### Kildare County Development Plan / Celbridge Local Area Plan 2017-2023

Landscape Character Area (High Sensitivity)

Designated Landscape – Area of High Amenity

Historic Landscape Area

Scenic Routes

Protected Views

Protected Views

County / City Boundary



© OpenStreetMap (and) contributors, CC-BY-SA, Esri, HERE, Garmin, (c) OpenStreetMap contributors, and the GIS user community

© Irish Rail (2021). This drawing is confidential and the copyright in it is owned by Irish Rail. This drawing must not be either loaned, copied or otherwise reproduced in whole or in part or used for any purpose without the prior permission of Irish Rail.

The contents of this publication are the sole responsibility of Iarnród Éireann and do not necessarily reflect the opinion of the European Union



Rev	Date	Dn	Chk'd	App'd	Description
v03	04/10/2021	NR	CR	AG	Description
v02	01/03/2021	NAR	CR	AG	Description
v01	12/11/2020	NON	SK	AG	Description

Date

06/10/2021

Scale

1:10,000 @ A4

Project Code

5199586

Issuer

TTA/RPS

Engineering Designer

Drawn

NR

Checked

CR

Approved

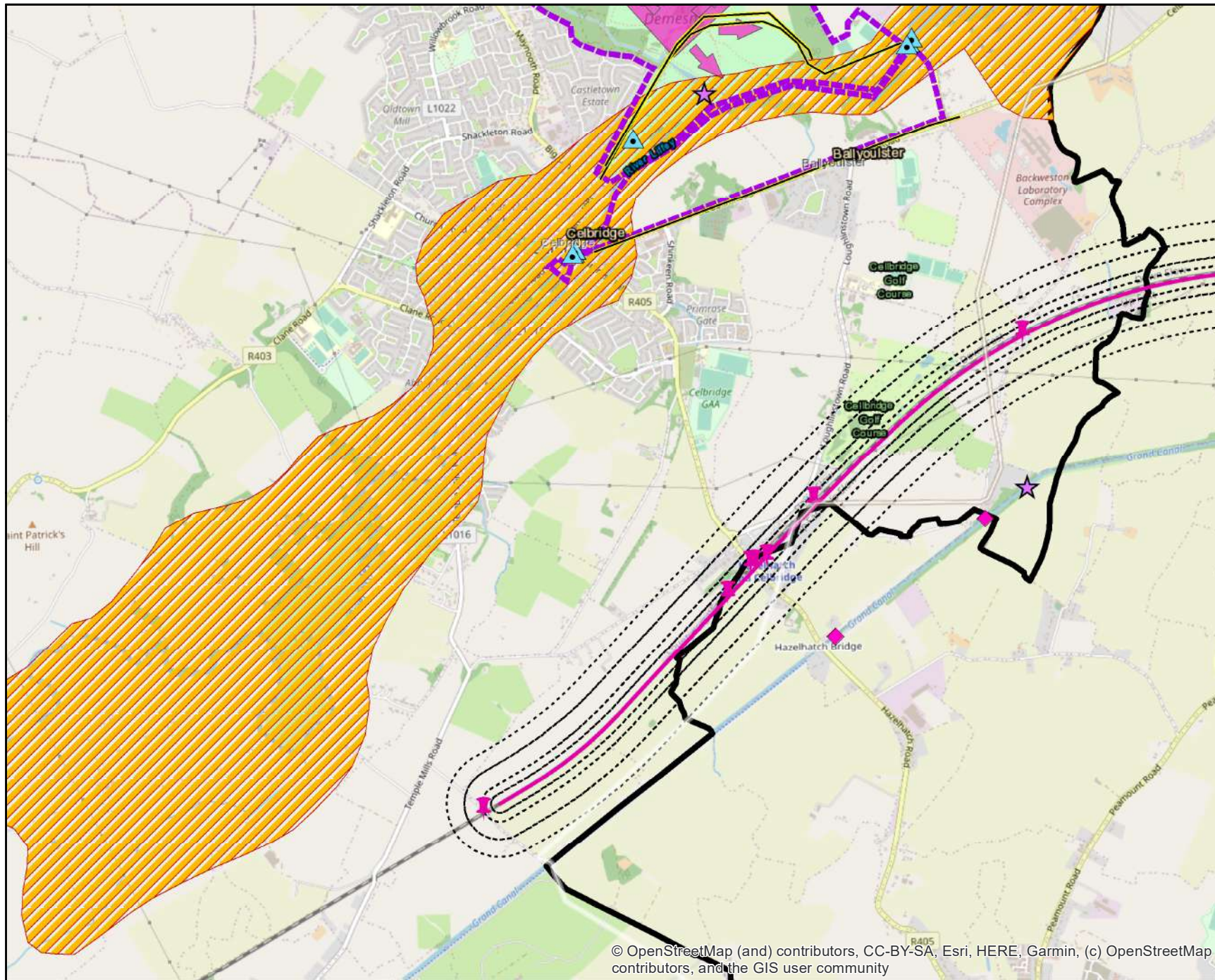
AG

QMS Code

Project Title	DART + SOUTH WEST		
Drawing Title	Landscape Constraints (Map 10 of 11)		
Drawing File Name	DP-04-23-DWG-EV-TTA-9861	Version	v03
Status	S3		

DO NOT SCALE USE FIGURED DIMENSIONS ONLY





## Legend

- Engineering Elements
- Buffers: 50m, 100m, 200m, 300m
- Rail Network Centreline
- Dublin City Development Plan 2016-2022**
  - Designated Conservation Areas
    - Z2 - To protect & improve the amenities of residential conservation areas
    - Z9 - To preserve, provide & improve recreational amenity and open space/green networks
    - Z11 - To protect & improve canal, river & coastal amenities
  - Views & Prospects
- South Dublin County Development Plan 2016-2022**
  - OS - To preserve and provide for open space and recreational amenities
  - Tree Preservation Order
- Kildare County Development Plan / Celbridge Local Area Plan 2017-2023**
  - Landscape Character Area (High Sensitivity)
  - Designated Landscape – Area of High Amenity
  - Historic Landscape Area
  - Scenic Routes
  - Protected Views
  - Protected Views
  - County / City Boundary



© OpenStreetMap (and) contributors, CC-BY-SA, Esri, HERE, Garmin, (c) OpenStreetMap contributors, and the GIS user community

© Irish Rail (2021). This drawing is confidential and the copyright in it is owned by Irish Rail. This drawing must not be either loaned, copied or otherwise reproduced in whole or in part or used for any purpose without the prior permission of Irish Rail.

The contents of this publication are the sole responsibility of Iarnród Éireann and do not necessarily reflect the opinion of the European Union



Rev	Date	Drn	Chkd	App'd	Description
x03	04/10/2021	NR	CR	AG	Description
x02	01/03/2021	NAR	CR	AG	Description
x01	12/11/2020	NON	SK	AG	Description

Client	Iarnród Éireann Irish Rail
Date	06/10/2021
Project Code	5199586
Issuer	TTA/RPS

Engineering Designer	ATKINS
Supported by:	RPS
Scale	1:30,000 @ A4
Drawn	NR
Checked	CR
Approved	AG
QMS Code	

Project Title	DART + SOUTH WEST		
Drawing Title	Landscape Constraints (Map 11 of 11)		
Drawing File Name	DP-04-23-DWG-EV-TTA-9861	Version	v03
Status	S3		

DO NOT SCALE USE FIGURED DIMENSIONS ONLY