

Legend

- Rail Network Centreline
- Buffers: 50m, 100m, 200m, 300m
- Record of Monuments and Places
- Sites and Monuments Record Zone
- National Inventory of Architectural Heritage (All Ratings)
- NIAH (Regional Rating & Above)
- Historic Houses and Demesne
- Dublin City**
 - Architectural Conservation Areas
 - Dublin City Industrial Heritage Records
 - Dublin City - 1916 Sites of Interest
 - Archaeological Site
 - Record of Protected Structures
 - Conservation Area
 - Zone Of Archaeological Potential
- South Dublin**
 - Record of Protected Structures
 - Architectural Conservation Area
- Kildare**
 - Record of Protected Structures
 - Architectural Conservation Area
 - Zone Of Archaeological Potential



© OpenStreetMap (and) contributors, CC-BY-SA

© Irish Rail (2021). This drawing is confidential and the copyright in it is owned by Irish Rail. This drawing must not be either loaned, copied or otherwise reproduced in whole or in part or used for any purpose without the prior permission of Irish Rail.

The contents of this publication are the sole responsibility of Iarnród Éireann and do not necessarily reflect the opinion of the European Union

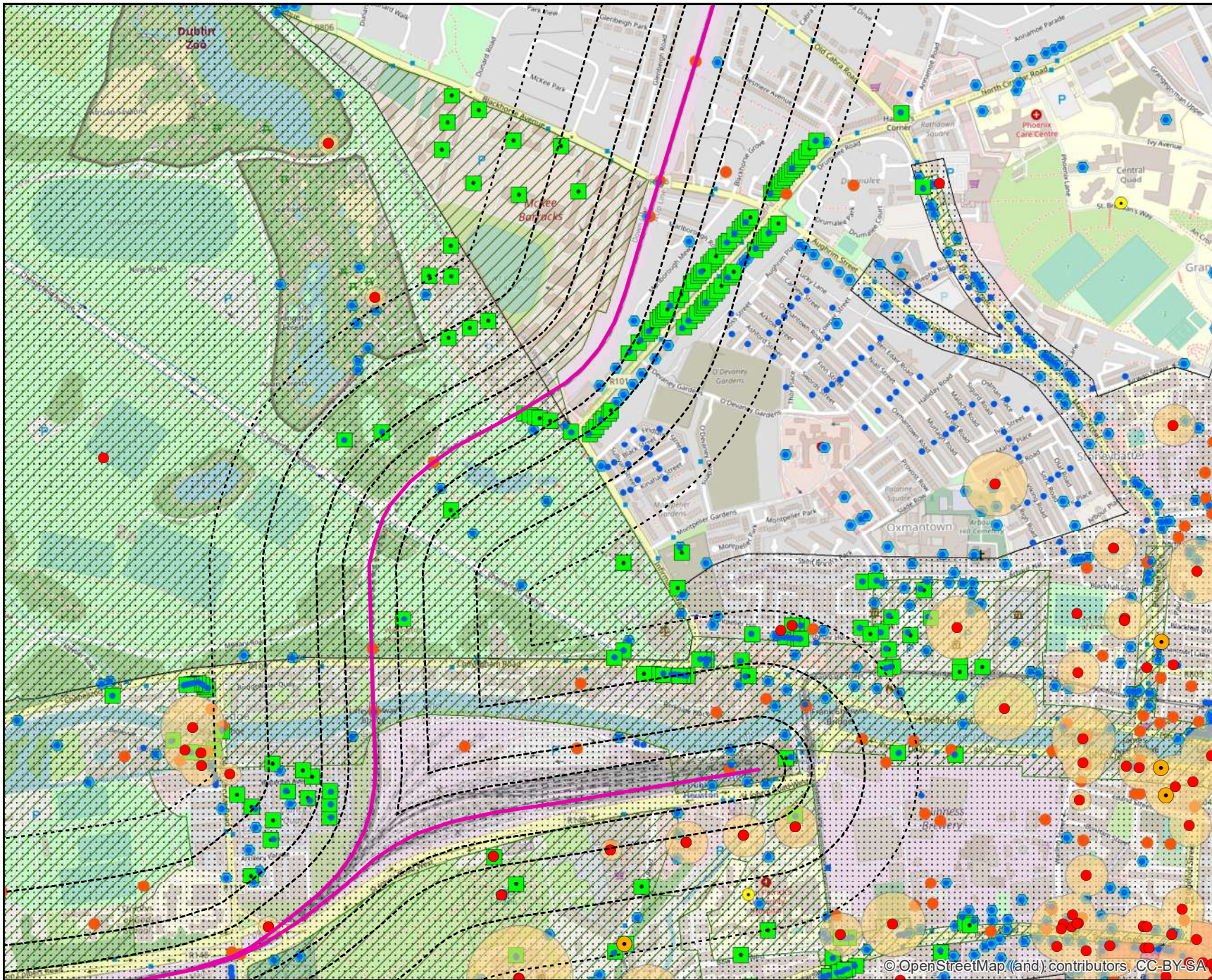


Rev	Date	Dn	Chkd	App'd	Description
v04	01/03/2021	NAR	CR	LK	Cultural heritage constraints, updated
v03	01/02/2021	NON	AG	LK	Updated with NIAH Regional rating and above
v02	02/11/2020	SK	SK	LK	Cultural heritage constraints, updated
v01	28/10/2020	SK	SK	LK	Cultural heritage constraints

Client	Engineering Designer
Date	Scale
Project Code	Issue
TTARPS	OMS Code

Project Title	DART + SOUTH WEST		
Drawing Title	Heritage Constraints		
Drawing File Name	DP-04-23-DWG-EV-TTA-9863		
Version	v04	Status	S3

DO NOT SCALE USE FIGURED DIMENSIONS ONLY



Legend

- Rail Network Centreline
- Buffers: 50m, 100m, 200m, 300m
- Record of Monuments and Places
- Sites and Monuments Record Zone
- National Inventory of Architectural Heritage (All Ratings)
- NIAH (Regional Rating & Above)
- Historic Houses and Demesne
- Dublin City**
 - Architectural Conservation Areas
 - Dublin City Industrial Heritage Records
 - Dublin City - 1916 Sites of Interest
 - Archaeological Site
 - Record of Protected Structures
 - Conservation Area
 - Zone Of Archaeological Potential
- South Dublin**
 - Record of Protected Structures
 - Architectural Conservation Area
- Kildare**
 - Record of Protected Structures
 - Architectural Conservation Area
 - Zone Of Archaeological Potential



© OpenStreetMap (and) contributors, CC-BY-SA

© Irish Rail (2021). This drawing is confidential and the copyright in it is owned by Irish Rail. This drawing must not be either loaned, copied or otherwise reproduced in whole or in part or used for any purpose without the prior permission of Irish Rail.

The contents of this publication are the sole responsibility of Iarnród Éireann and do not necessarily reflect the opinion of the European Union

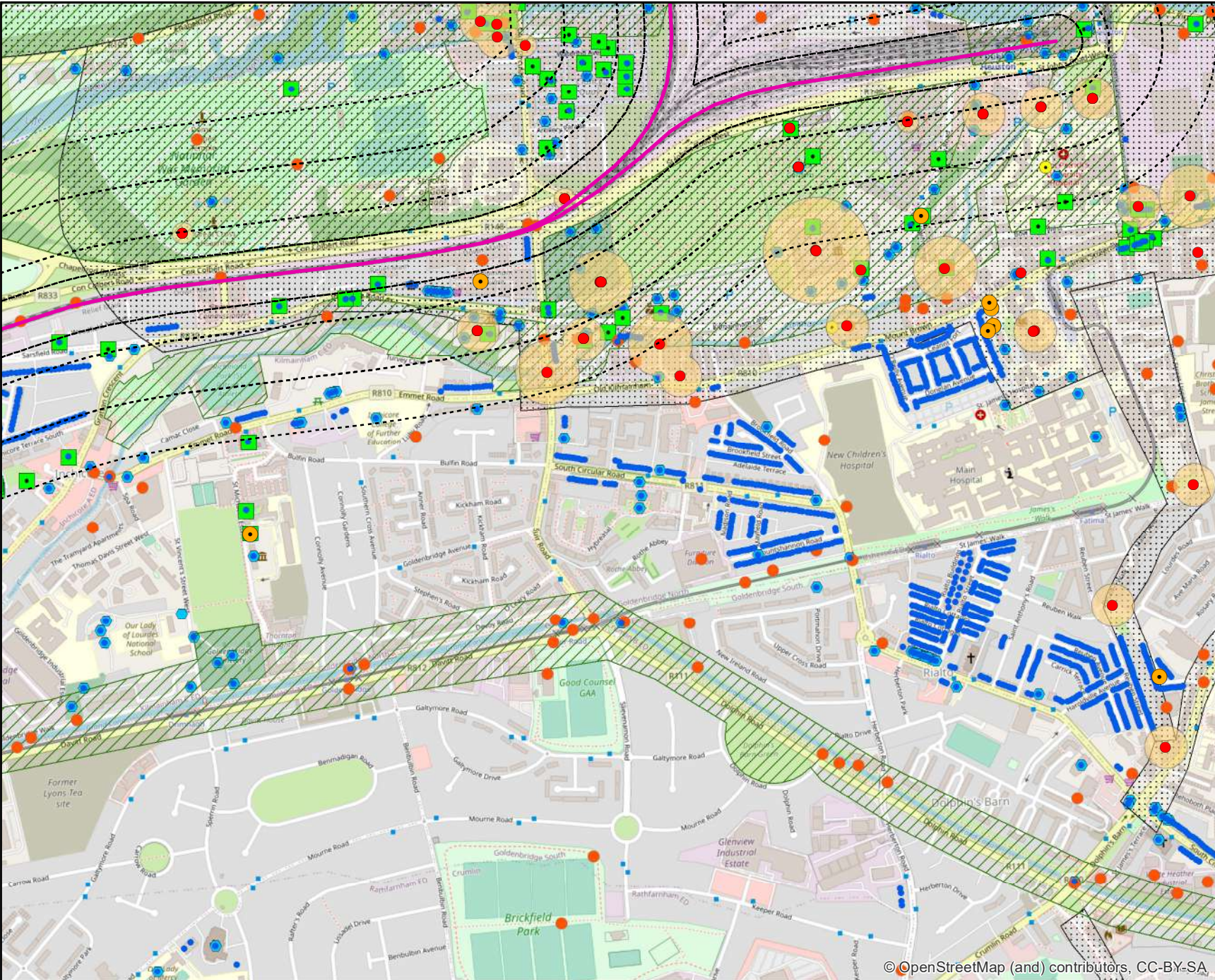


Rev	Date	Drn	Chkd	App'd	Description
v04	01/03/2021	NAR	CR	LK	Cultural heritage constraints, updated
v03	01/02/2021	NON	AG	LK	Updated with NIAH Regional rating and above
v02	02/11/2020	SK	SK	LK	Cultural heritage constraints, updated
v01	28/10/2020	SK	SK	LK	Cultural heritage constraints

Client		Engineering Designer	
Iarnród Éireann Irish Rail		ATKINS TYPSA Supported by: RPS	
Date	01/03/2021	Scale	1:10,000 @ A4
Project Code	5199586	Issuer	TT&RPS
		Drawn	NAR
		Checked	CR
		Approved	LK
		OMS Code	

Project Title	DART + SOUTH WEST		
Drawing Title	Heritage Constraints (Map 02 of 10)		
Drawing File Name	DP-04-23-DWG-EV-TTA-9863	Version	v04
Status	S3		

DO NOT SCALE USE FIGURED DIMENSIONS ONLY



Legend

- Rail Network Centreline
- Buffers: 50m, 100m, 200m, 300m
- Record of Monuments and Places
- Sites and Monuments Record Zone
- National Inventory of Architectural Heritage (All Ratings)
- NIAH (Regional Rating & Above)
- Historic Houses and Demesne

Dublin City

- Architectural Conservation Areas
- Dublin City Industrial Heritage Records
- Dublin City - 1916 Sites of Interest
- Archaeological Site
- Record of Protected Structures
- Conservation Area
- Zone Of Archaeological Potential

South Dublin

- Record of Protected Structures
- Architectural Conservation Area

Kildare

- Record of Protected Structures
- Architectural Conservation Area
- Zone Of Archaeological Potential



© OpenStreetMap (and) contributors, CC-BY-SA

© Irish Rail (2021). This drawing is confidential and the copyright in it is owned by Irish Rail. This drawing must not be either loaned, copied or otherwise reproduced in whole or in part or used for any purpose without the prior permission of Irish Rail.

The contents of this publication are the sole responsibility of Iarnród Éireann and do not necessarily reflect the opinion of the European Union

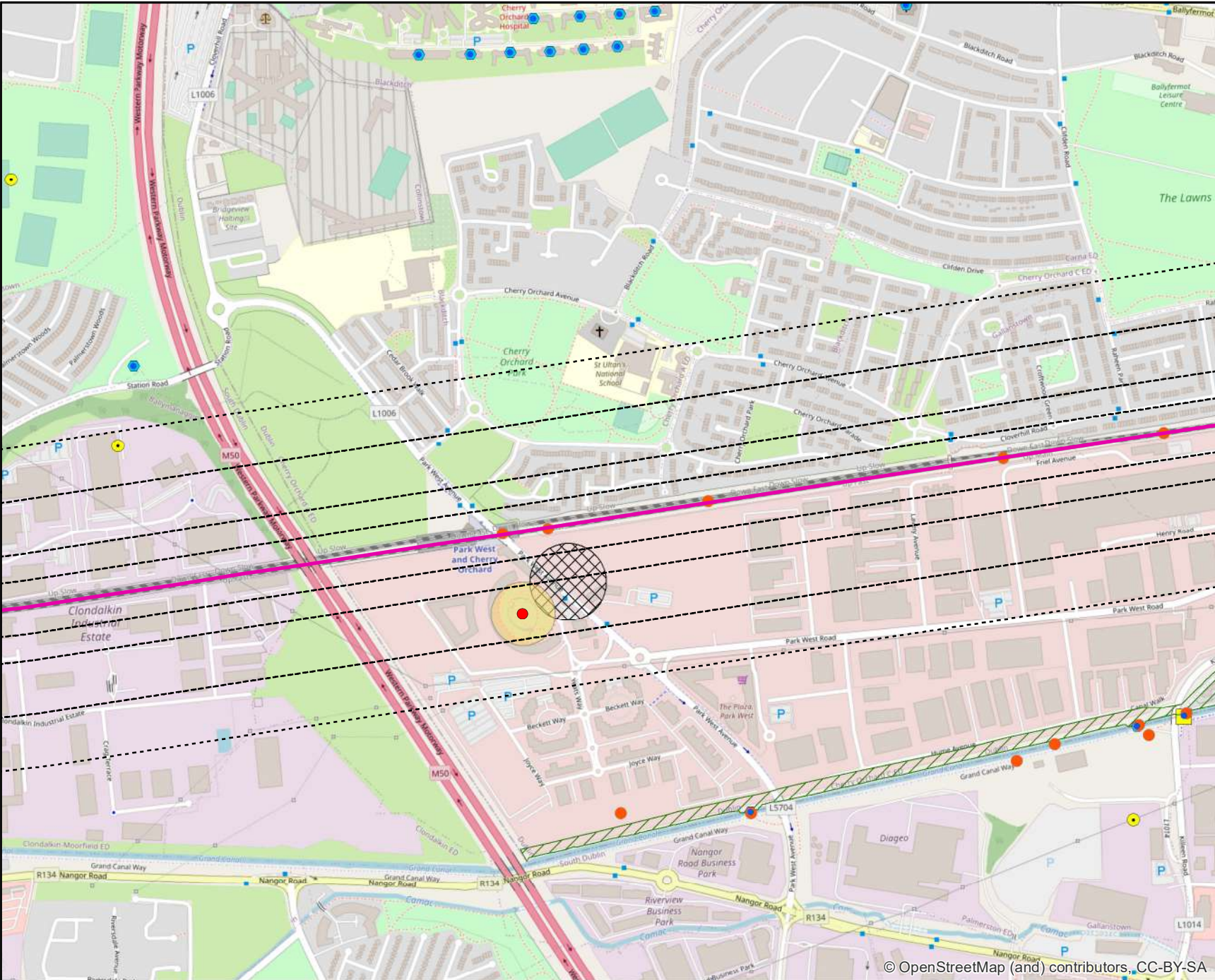


Rev	Date	Drn	Chkd	App'd	Description
v04	01/03/2021	NAR	CR	LK	Cultural heritage constraints, updated
v03	01/02/2021	NON	AG	LK	Updated with NIAH Regional rating and above
v02	02/11/2020	SK	SK	LK	Cultural heritage constraints, updated
v01	28/10/2020	SK	SK	LK	Cultural heritage constraints

Client		Engineering Designer	
Iarnród Éireann Irish Rail		ATKINS TYPSA Supported by: RPS	
Date	01/03/2021	Scale	1:10,000 @ A4
Project Code	5199586	Issue	TTARPS
		Drawn	NAR
		Checked	CR
		Approved	LK
		OMS Code	

Project Title	DART + SOUTH WEST		
Drawing Title	Heritage Constraints (Map 03 of 10)		
Drawing File Name	DP-04-23-DWG-EV-TTA-9863	Version	v04
Status	S3		

DO NOT SCALE USE FIGURED DIMENSIONS ONLY



Legend

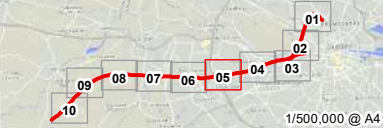
- Rail Network Centreline
 - Buffers: 50m, 100m, 200m, 300m
 - Record of Monuments and Places
 - Sites and Monuments Record Zone
 - National Inventory of Architectural Heritage (All Ratings)
 - NIAH (Regional Rating & Above)
 - Historic Houses and Demesne
- Dublin City**
- Architectural Conservation Areas
 - Dublin City Industrial Heritage Records
 - Dublin City - 1916 Sites of Interest
 - Archaeological Site
 - Record of Protected Structures
 - Conservation Area
 - Zone Of Archaeological Potential
- South Dublin**
- Record of Protected Structures
 - Architectural Conservation Area
- Kildare**
- Record of Protected Structures
 - Architectural Conservation Area
 - Zone Of Archaeological Potential



© OpenStreetMap (and) contributors, CC-BY-SA

© Irish Rail (2021). This drawing is confidential and the copyright in it is owned by Irish Rail. This drawing must not be either loaned, copied or otherwise reproduced in whole or in part or used for any purpose without the prior permission of Irish Rail.

The contents of this publication are the sole responsibility of Iarnród Éireann and do not necessarily reflect the opinion of the European Union

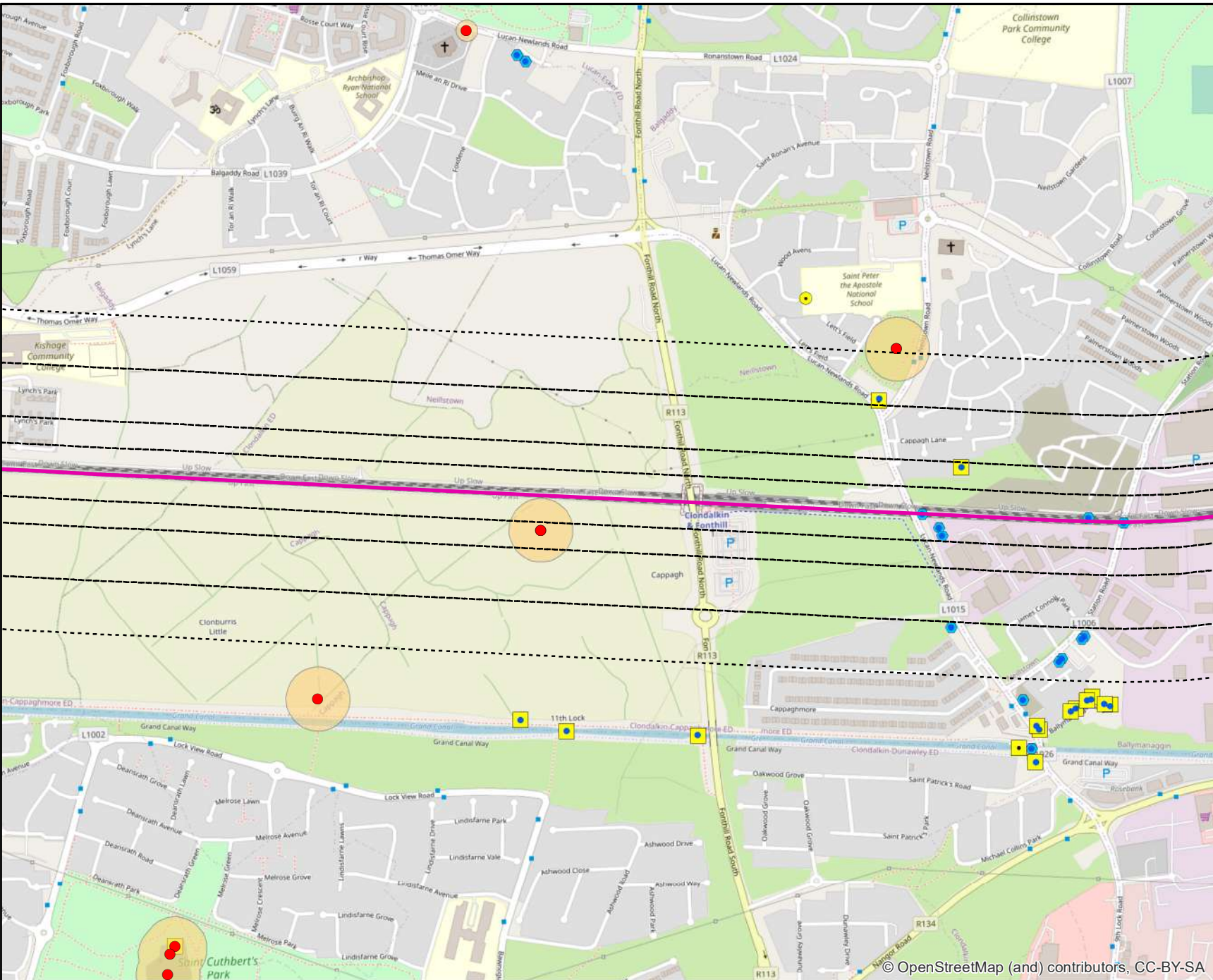


Rev	Date	Dn	Chkd	App'd	Description
v04	01/03/2021	NAR	CR	LK	Cultural heritage constraints, updated
v03	01/02/2021	NON	AG	LK	Updated with NIAH Regional rating and above
v02	02/11/2020	SK	SK	LK	Cultural heritage constraints, updated
v01	28/10/2020	SK	SK	LK	Cultural heritage constraints

Client		Engineering Designer	
Iarnród Éireann Irish Rail		ATKINS TYPSA Supported by: RPS	
Date	01/03/2021	Scale	1:10,000 @ A4
Project Code	5199586	Issuer	TTARPS
		QMS Code	

Project Title	DART + SOUTH WEST		
Drawing Title	Heritage Constraints (Map 05 of 10)		
Drawing File Name	DP-04-23-DWG-EV-TTA-9863	Version	v04
Status	S3		

DO NOT SCALE USE FIGURED DIMENSIONS ONLY



Legend

- Rail Network Centreline
- Buffers: 50m, 100m, 200m, 300m
- Record of Monuments and Places
- Sites and Monuments Record Zone
- National Inventory of Architectural Heritage (All Ratings)
- NIAH (Regional Rating & Above)
- Historic Houses and Demesne
- Dublin City**
 - Architectural Conservation Areas
 - Dublin City Industrial Heritage Records
 - Dublin City - 1916 Sites of Interest
 - Archaeological Site
 - Record of Protected Structures
 - Conservation Area
 - Zone Of Archaeological Potential
- South Dublin**
 - Record of Protected Structures
 - Architectural Conservation Area
- Kildare**
 - Record of Protected Structures
 - Architectural Conservation Area
 - Zone Of Archaeological Potential



© OpenStreetMap (and) contributors, CC-BY-SA

© Irish Rail (2021). This drawing is confidential and the copyright in it is owned by Irish Rail. This drawing must not be either loaned, copied or otherwise reproduced in whole or in part or used for any purpose without the prior permission of Irish Rail.

The contents of this publication are the sole responsibility of Iarnród Éireann and do not necessarily reflect the opinion of the European Union

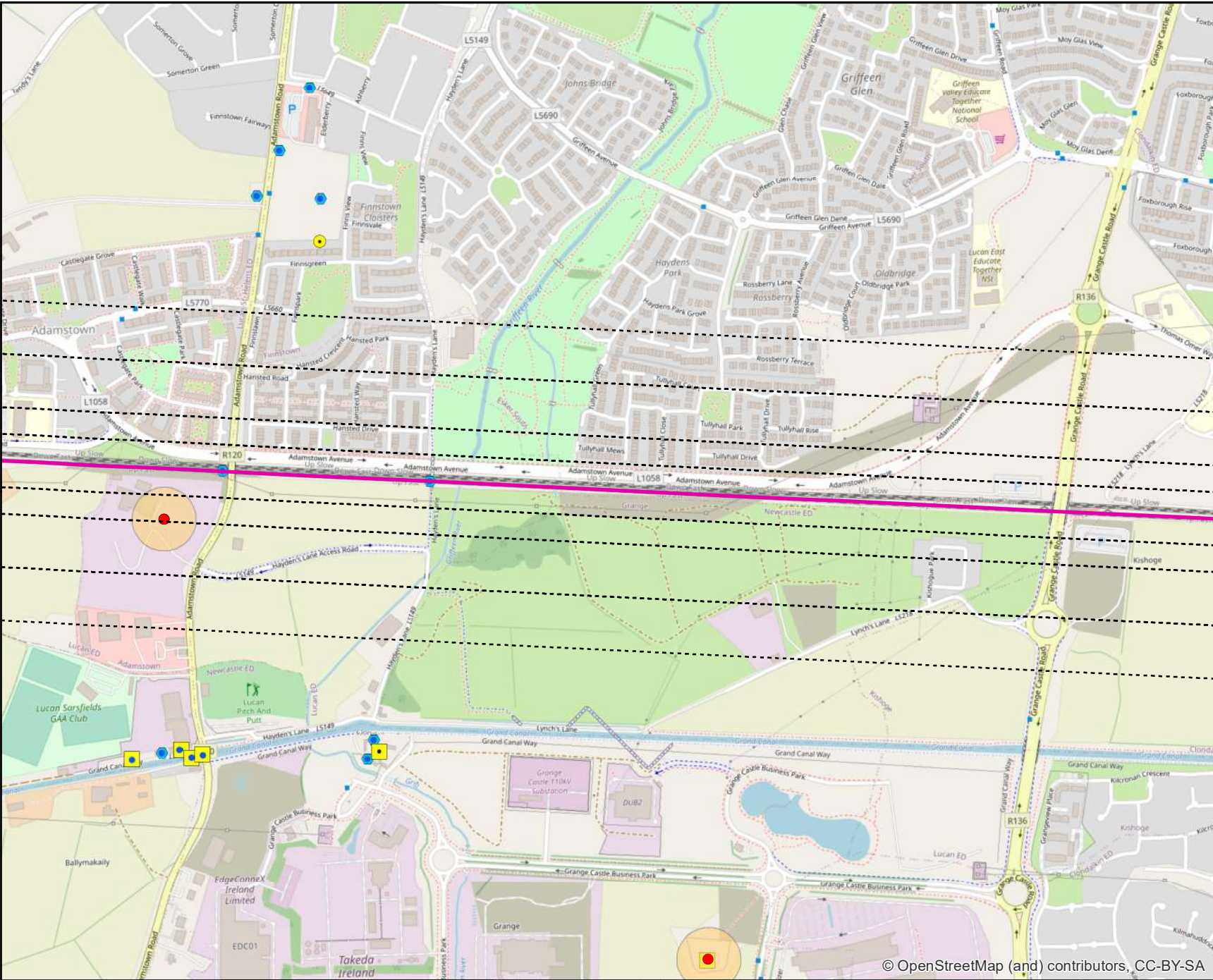


Rev	Date	Drn	Chkd	App'd	Description
v04	01/03/2021	NAR	CR	LK	Cultural heritage constraints, updated
v03	01/02/2021	NON	AG	LK	Updated with NIAH Regional rating and above
v02	02/11/2020	SK	SK	LK	Cultural heritage constraints, updated
v01	28/10/2020	SK	SK	LK	Cultural heritage constraints

Iarnród Éireann Irish Rail	Client
Date: 01/03/2021	Scale: 1:10,000 @ A4
Project Code: 5199586	Issuer: TTARPS
Engineering Designer: ATKINS	Supported by: rps
Drawn: NAR	Checked: CR
Approved: LK	QMS Code:

Project Title	DART + SOUTH WEST		
Drawing Title	Heritage Constraints (Map 06 of 10)		
Drawing File Name	DP-04-23-DWG-EV-TTA-9863	Version: v04	Status: S3

DO NOT SCALE USE FIGURED DIMENSIONS ONLY



Legend

- Rail Network Centreline
- Buffers: 50m, 100m, 200m, 300m
- Record of Monuments and Places
- Sites and Monuments Record Zone
- National Inventory of Architectural Heritage (All Ratings)
- NIAH (Regional Rating & Above)
- Historic Houses and Demesne

Dublin City

- Architectural Conservation Areas
- Dublin City Industrial Heritage Records
- Dublin City - 1916 Sites of Interest
- Archaeological Site
- Record of Protected Structures
- Conservation Area
- Zone Of Archaeological Potential

South Dublin

- Record of Protected Structures
- Architectural Conservation Area

Kildare

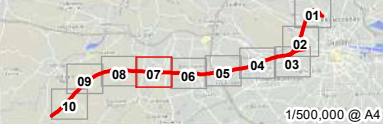
- Record of Protected Structures
- Architectural Conservation Area
- Zone Of Archaeological Potential



© OpenStreetMap (and) contributors, CC-BY-SA

© Irish Rail (2021). This drawing is confidential and the copyright in it is owned by Irish Rail. This drawing must not be either loaned, copied or otherwise reproduced in whole or in part or used for any purpose without the prior permission of Irish Rail.

The contents of this publication are the sole responsibility of Iarnród Éireann and do not necessarily reflect the opinion of the European Union

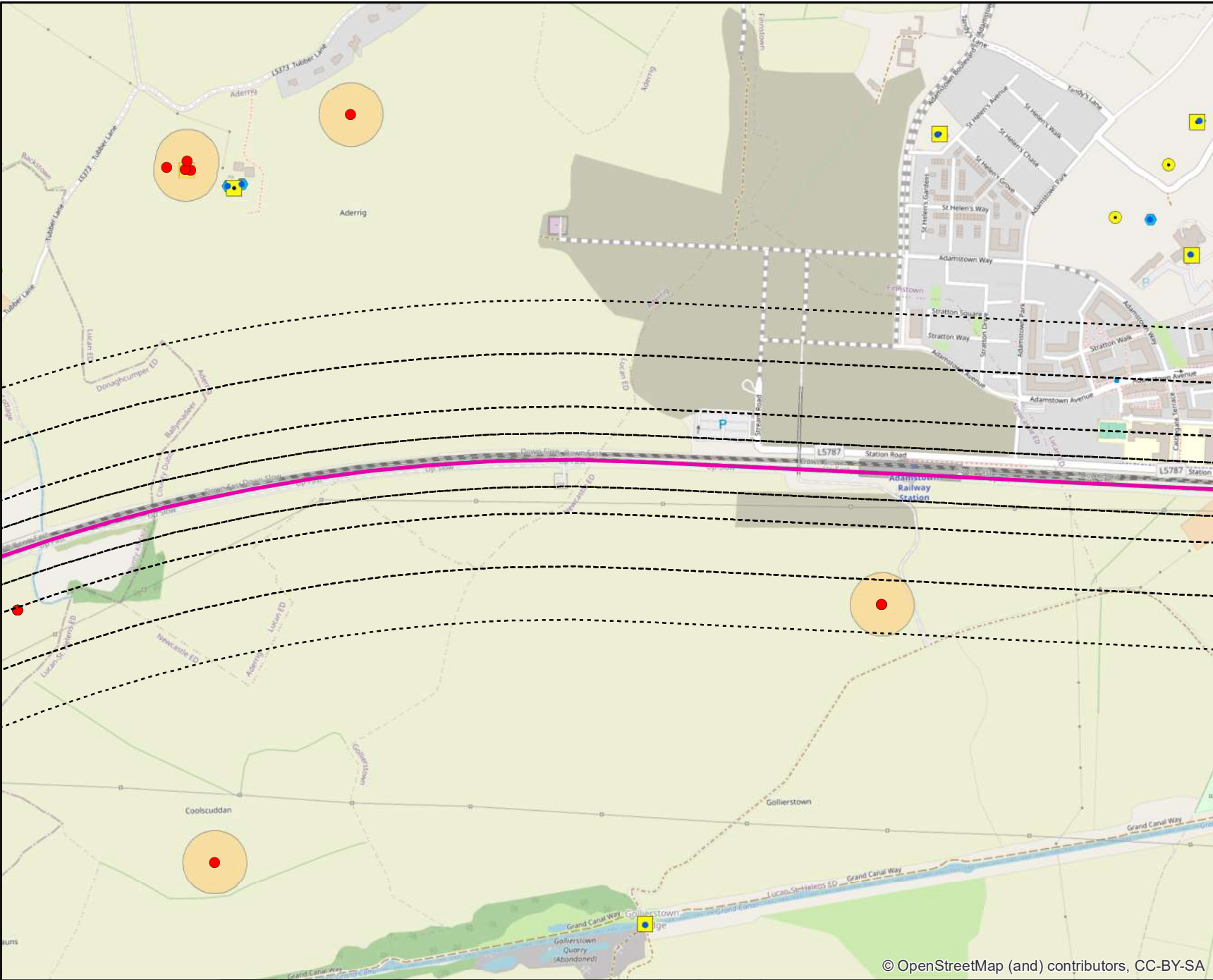


Rev	Date	Drn	Chkd	App'd	Description
v04	01/03/2021	NAR	CR	LK	Cultural heritage constraints, updated
v03	01/02/2021	NON	AG	LK	Updated with NIAH Regional rating and above
v02	02/11/2020	SK	SK	LK	Cultural heritage constraints, updated
v01	28/10/2020	SK	SK	LK	Cultural heritage constraints

Client		Engineering Designer	
Iarnród Éireann Irish Rail		ATKINS TYPSA Supported by: RPS	
Date	01/03/2021	Scale	A1:10,000 @ A4
Project Code	5199586	Issue	TTARPS
		Drawn	NAR
		Checked	CR
		Approved	LK
		QMS Code	

Project Title	DART + SOUTH WEST		
Drawing Title	Heritage Constraints (Map 07 of 10)		
Drawing File Name	DP-04-23-DWG-EV-TTA-9863	Version	v04
Status	S3		

DO NOT SCALE USE FIGURED DIMENSIONS ONLY



Legend

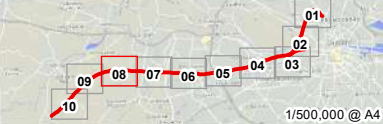
- Rail Network Centreline
- Buffers: 50m, 100m, 200m, 300m
- Record of Monuments and Places
- Sites and Monuments Record Zone
- National Inventory of Architectural Heritage (All Ratings)
- NIAH (Regional Rating & Above)
- Historic Houses and Demesne
- Dublin City**
 - Architectural Conservation Areas
 - Dublin City Industrial Heritage Records
 - Dublin City - 1916 Sites of Interest
 - Archaeological Site
 - Record of Protected Structures
 - Conservation Area
 - Zone Of Archaeological Potential
- South Dublin**
 - Record of Protected Structures
 - Architectural Conservation Area
- Kildare**
 - Record of Protected Structures
 - Architectural Conservation Area
 - Zone Of Archaeological Potential



© OpenStreetMap (and) contributors, CC-BY-SA

© Irish Rail (2021). This drawing is confidential and the copyright in it is owned by Irish Rail. This drawing must not be either loaned, copied or otherwise reproduced in whole or in part or used for any purpose without the prior permission of Irish Rail.

The contents of this publication are the sole responsibility of Iarnród Éireann and do not necessarily reflect the opinion of the European Union



Rev	Date	Dn	Chkd	App'd	Description
v04	01/03/2021	NAR	CR	LK	Cultural heritage constraints, updated
v03	01/02/2021	NON	AG	LK	Updated with NIAH Regional rating and above
v02	02/11/2020	SK	SK	LK	Cultural heritage constraints, updated
v01	28/10/2020	SK	SK	LK	Cultural heritage constraints

Client

Iarnród Éireann
Irish Rail

Date 01/03/2021 **Scale** 1:10,000 @ A4

Project Code 5199586 **Issuer** TTARPS

Engineering Designer

ATKINS
Member of the Atkins Group

Supported by: **TPS**

Drawn NAR **Checked** CR **Approved** LK

QMS Code

Project Title DART + SOUTH WEST

Drawing Title **Heritage Constraints**
(Map 08 of 10)

Drawing File Name DP-04-23-DWG-EV-TTA-9863 **Version** v04 **Status** S3

DO NOT SCALE USE FIGURED DIMENSIONS ONLY



Legend

- Rail Network Centreline
- Buffers: 50m, 100m, 200m, 300m
- Record of Monuments and Places
- Sites and Monuments Record Zone
- National Inventory of Architectural Heritage (All Ratings)
- NIAH (Regional Rating & Above)
- Historic Houses and Demesne
- Dublin City**
 - Architectural Conservation Areas
 - Dublin City Industrial Heritage Records
 - Dublin City - 1916 Sites of Interest
 - Archaeological Site
 - Record of Protected Structures
 - Conservation Area
 - Zone Of Archaeological Potential
- South Dublin**
 - Record of Protected Structures
 - Architectural Conservation Area
- Kildare**
 - Record of Protected Structures
 - Architectural Conservation Area
 - Zone Of Archaeological Potential



© OpenStreetMap (and) contributors, CC-BY-SA

© Irish Rail (2021). This drawing is confidential and the copyright in it is owned by Irish Rail. This drawing must not be either loaned, copied or otherwise reproduced in whole or in part or used for any purpose without the prior permission of Irish Rail.

The contents of this publication are the sole responsibility of Iarnród Éireann and do not necessarily reflect the opinion of the European Union

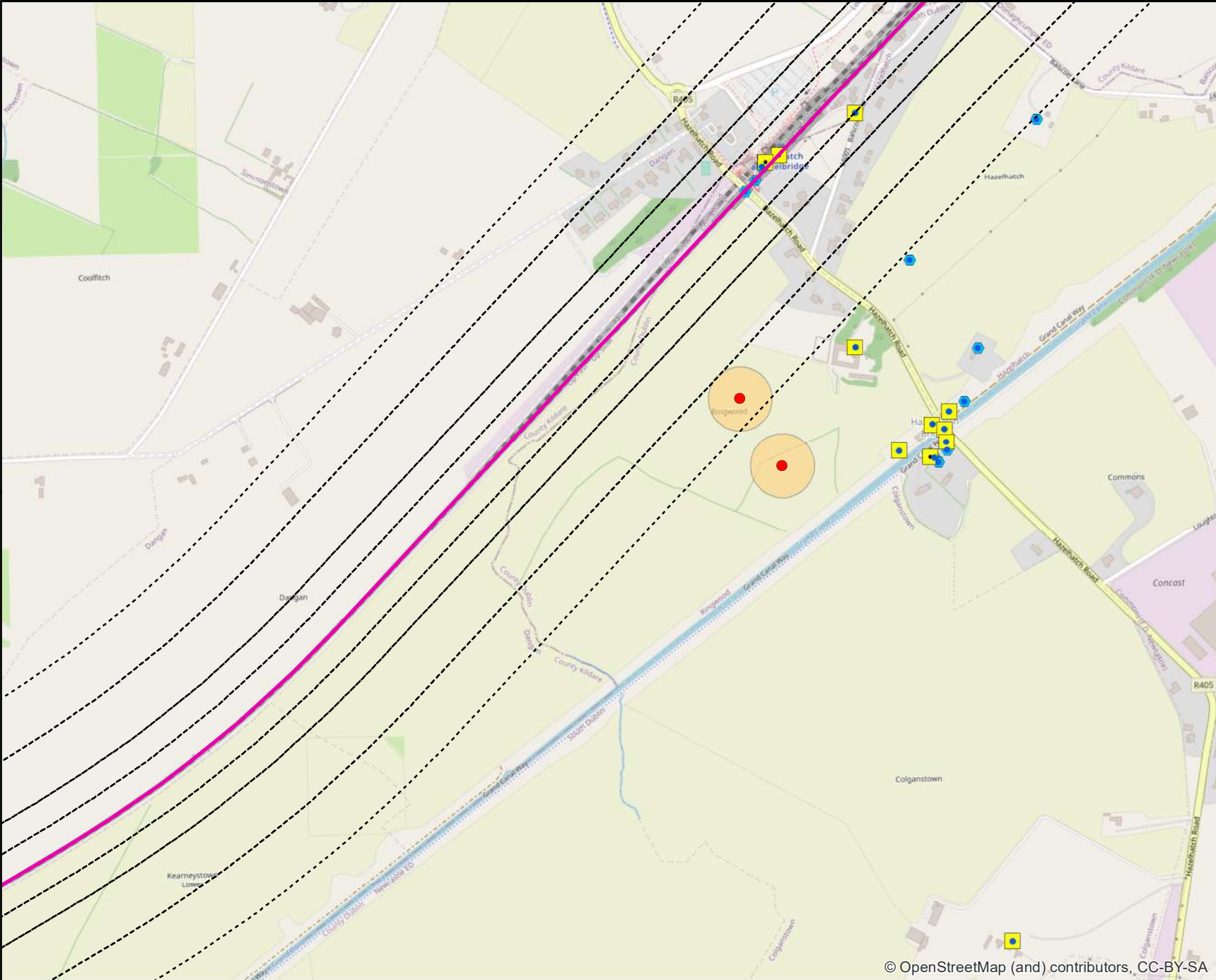


Rev	Date	Drn	Chk'd	App'd	Description
v04	01/03/2021	NAR	CR	LK	Cultural heritage constraints, updated
v03	01/02/2021	NON	AG	LK	Updated with NIAH Regional rating and above
v02	02/11/2020	SK	SK	LK	Cultural heritage constraints, updated
v01	28/10/2020	SK	SK	LK	Cultural heritage constraints

Client		Engineering Designer	
Iarnród Éireann Irish Rail		TYPSA ATKINS Supported by: RPS	
Date	01/03/2021	Scale	1:10,000 @ A4
Project Code	5199586	Issuer	TTA/RPS
		Drawn	NAR
		Checked	CR
		Approved	LK
		OMS Code	

Project Title	DART + SOUTH WEST		
Drawing Title	Heritage Constraints (Map 09 of 10)		
Drawing File Name	DP-04-23-DWG-EV-TTA-9863	Version	v04
Status	S3		

DO NOT SCALE USE FIGURED DIMENSIONS ONLY



Legend

- Rail Network Centreline
- Buffers: 50m, 100m, 200m, 300m
- Record of Monuments and Places
- Sites and Monuments Record Zone
- National Inventory of Architectural Heritage (All Ratings)
- NIAH (Regional Rating & Above)
- Historic Houses and Demesne
- Dublin City**
 - Architectural Conservation Areas
 - Dublin City Industrial Heritage Records
 - Dublin City - 1916 Sites of Interest
 - Archaeological Site
 - Record of Protected Structures
 - Conservation Area
 - Zone Of Archaeological Potential
- South Dublin**
 - Record of Protected Structures
 - Architectural Conservation Area
- Kildare**
 - Record of Protected Structures
 - Architectural Conservation Area
 - Zone Of Archaeological Potential



© OpenStreetMap (and) contributors, CC-BY-SA

© Irish Rail (2021). This drawing is confidential and the copyright in it is owned by Irish Rail. This drawing must not be either loaned, copied or otherwise reproduced in whole or in part or used for any purpose without the prior permission of Irish Rail.

The contents of this publication are the sole responsibility of Iarnród Éireann and do not necessarily reflect the opinion of the European Union



Rev	Date	Dn	Chk'd	App'd	Description
v04	01/03/2021	NAR	CR	LK	Cultural heritage constraints, updated
v03	01/02/2021	NON	AG	LK	Updated with NIAH Regional rating and above
v02	02/11/2020	SK	SK	LK	Cultural heritage constraints, updated
v01	28/10/2020	SK	SK	LK	Cultural heritage constraints

Client		Engineering Designer	
Iarnród Éireann Irish Rail		ATKINS TYNSA Supported by: RPS	
Date	01/03/2021	Scale	1:10,000 @ A4
Project Code	5199586	Issuer	TTA/RPS
Drawn	NAR	Checked	CR
Approved	LK	QMS Code	

Project Title	DART + SOUTH WEST		
Drawing Title	Heritage Constraints (Map 10 of 10)		
Drawing File Name	DP-04-23-DWG-EV-TTA-9863	Version	v04
Status	S3		

DO NOT SCALE USE FIGURED DIMENSIONS ONLY