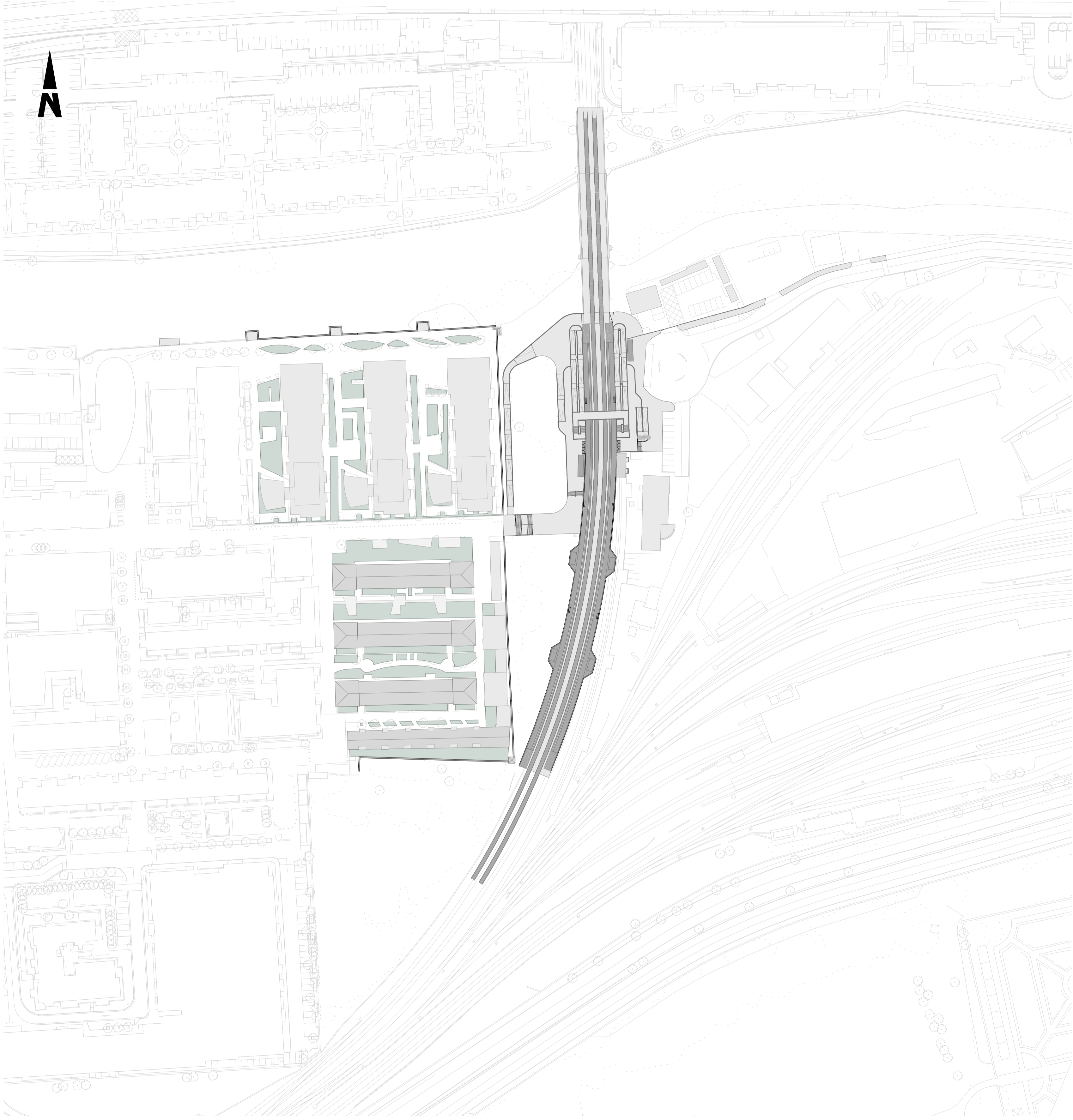


\\192.168.11.93\166293-W\IPR3-2-GRPH\X\MLD02-BE01\_MODELS



1 SITE PLAN  
1:1000

NOTES:

Level +0.00m corresponds to top of rail in the station area, which is +8.735m AOD.

Platforms' position is indicative. They must be coordinated with PWay team.

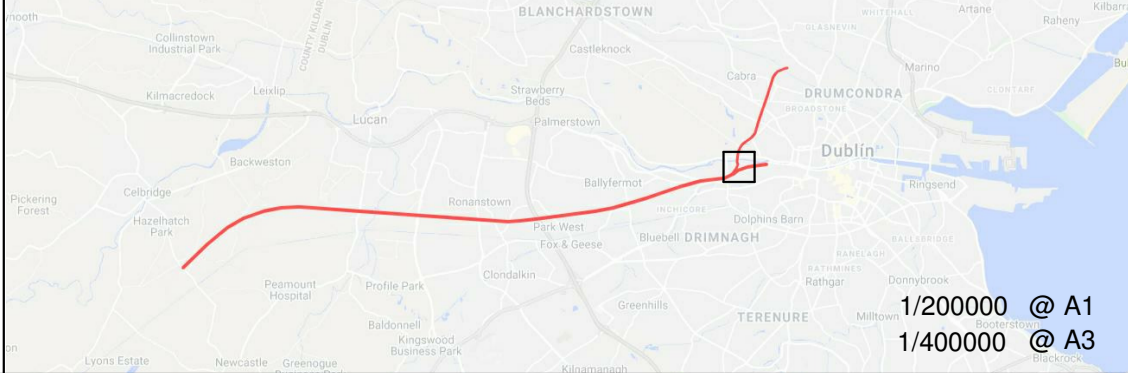
Site information is only indicative.

© Irish Rail (2021). This drawing is confidential and the copyright in it is owned by Irish Rail. This drawing must not be either loaned, copied or otherwise reproduced in whole or in part or used for any purpose without the prior permission of Irish Rail.

© Ordnance Survey Ireland and government of Ireland. All O.S. Data used for plans are printed under: "Copyright Ordnance Survey Ireland" Survey No. 0039721. (OSi Aerial Data or OSi Lidar Data) & Survey No. 2020/OSI\_NMA\_180 (OSi Vector Data).

All elevations are in metres and relate to OSi Geoid Model (OSGM02) Main Head as defined by existing Project Control.

All Co-ordinates are in Irish Transverse Mercator Grid (ITM) as defined by OSi active GPS station Tallaght College (TLLG).



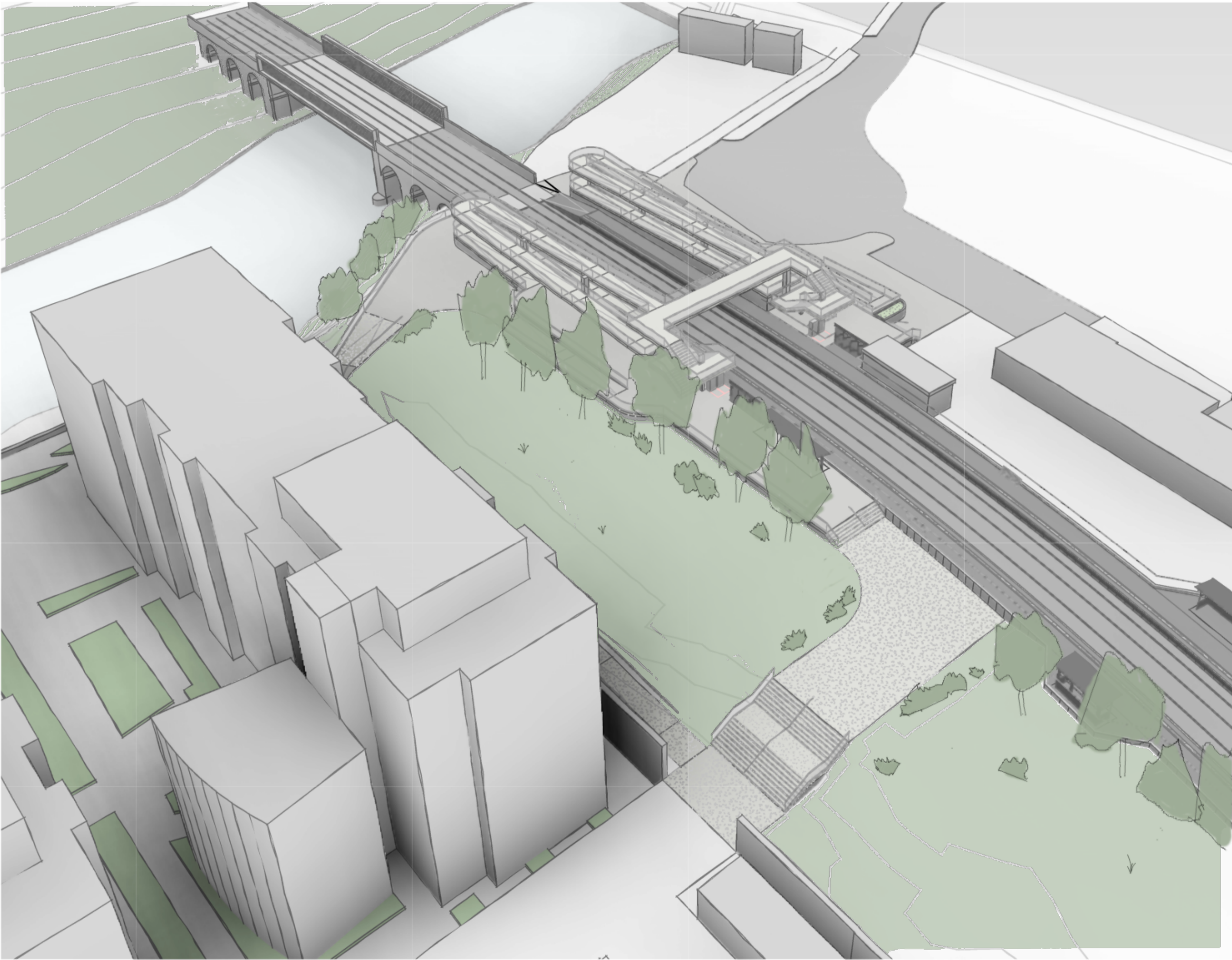
Rev	Date	Drn	Chk'd	App'd	Description
v01	27/10/2021	AML	PCO	JPN	ISSUED FOR PUBLIC CONSULTATION 2

Client	
Date	27/10/2021
Project Code	TTA

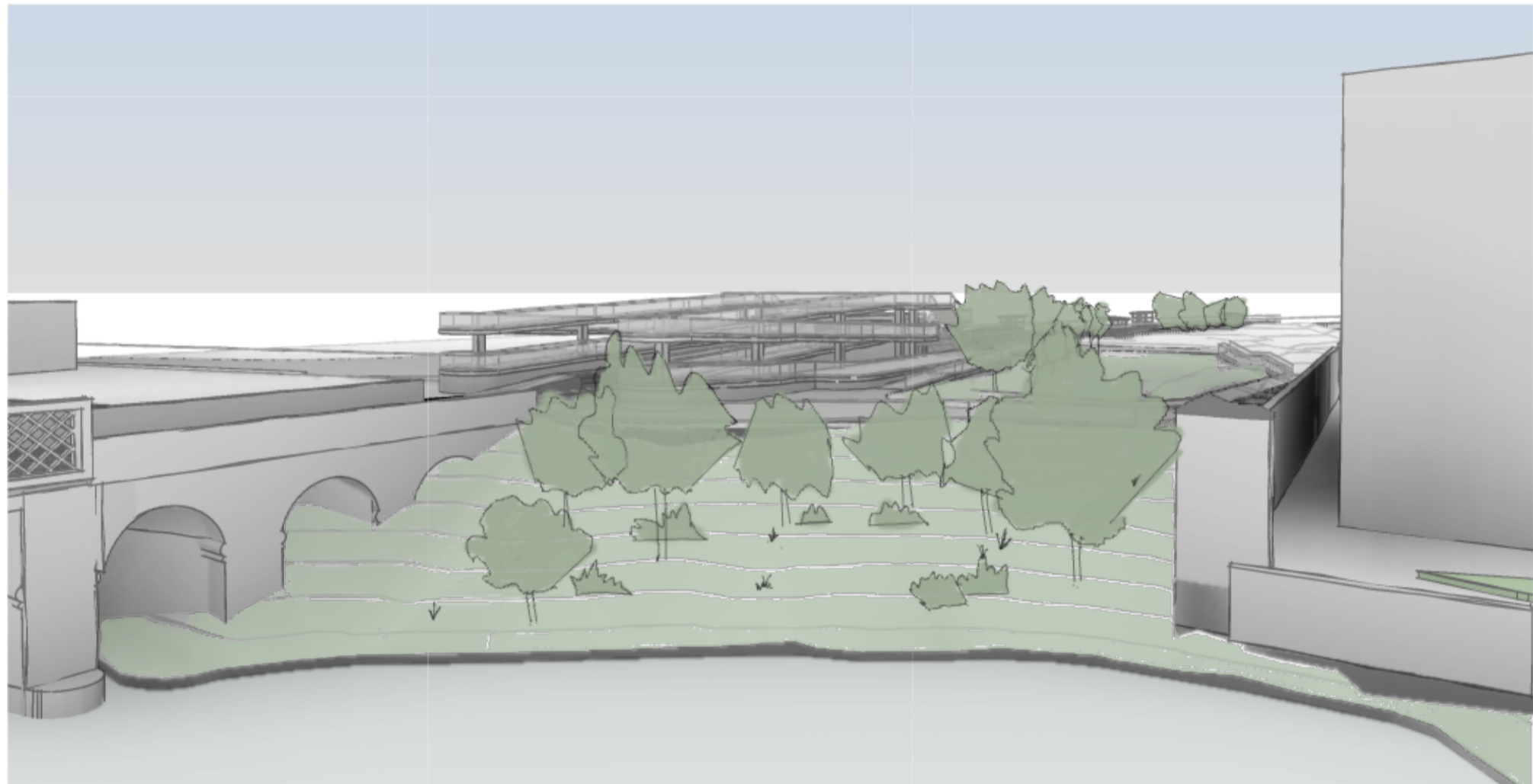
Engineering Designer	
Supported by:	
Drawn	AML
Checked	PCO
Approved	JPN
OMS Code	

Project Title	
DART + SOUTH WEST	
Drawing Title	
HEUSTON WEST ST. CONCEPT DESIGN SITE PLAN	
Drawing File Name	
DP-04-23-DWG-BU-TTA-37622	
Version	v01
Status	S3

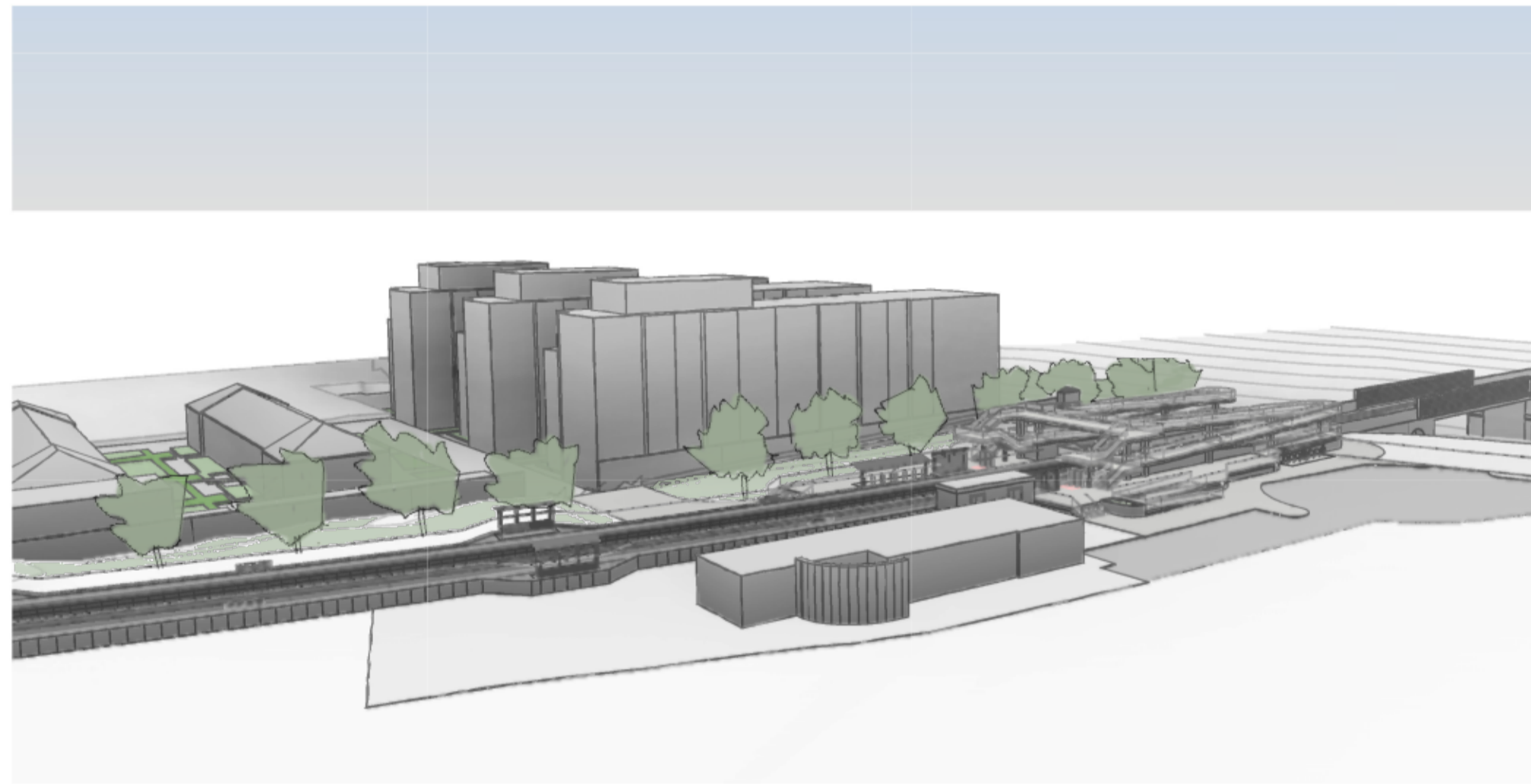
DO NOT SCALE USE FIGURED DIMENSIONS ONLY



1 AERIAL VIEW FROM CLANCY QUAY



2 VIEW FROM RIVER



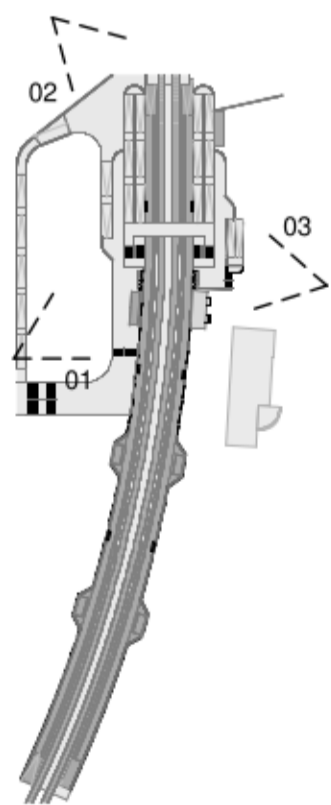
3 VIEW FROM EAST

NOTES:

Level +0.00m corresponds to top of rail in the station area, which is +8.735m AOD.

Platforms' position is indicative. They must be coordinated with PWay team.

Site information is only indicative.

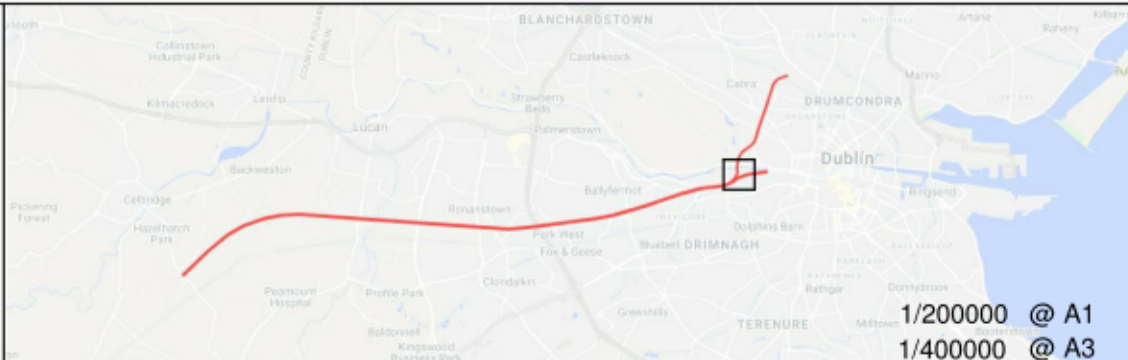


© Irish Rail (2021). This drawing is confidential and the copyright in it is owned by Irish Rail. This drawing must not be either loaned, copied or otherwise reproduced in whole or in part or used for any purpose without the prior permission of Irish Rail.

© Ordnance Survey Ireland and government of Ireland. All O.S. Data used for plans are printed under: "Copyright Ordnance Survey Ireland" Survey No. 0039721. (OSi Aerial Data or OSi Lidar Data) & Survey No. 2020/OSi\_NMA\_180 (OSi Vector Data).

All elevations are in metres and relate to OSi Geoid Model (OSGM02) Main Head as defined by existing Project Control.

All Co-ordinates are in Irish Transverse Mercator Grid (ITM) as defined by OSi active GPS station Tallaght College (TLLG).



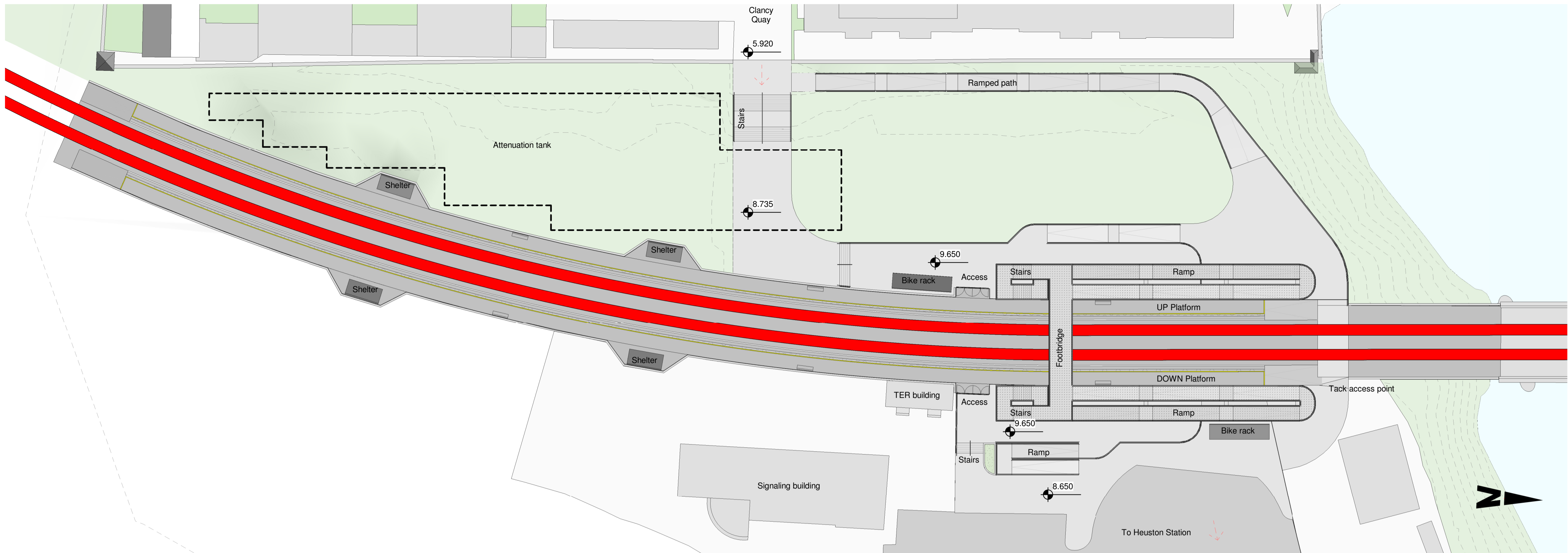
Rev	Date	Drn	Chk'd	App'd	Description
v01	27/10/2021	AML	PCO	JPN	ISSUED FOR PUBLIC CONSULTATION 2

Client	
Iarnród Éireann Irish Rail	
Date	27/10/2021
Project Code	TTA

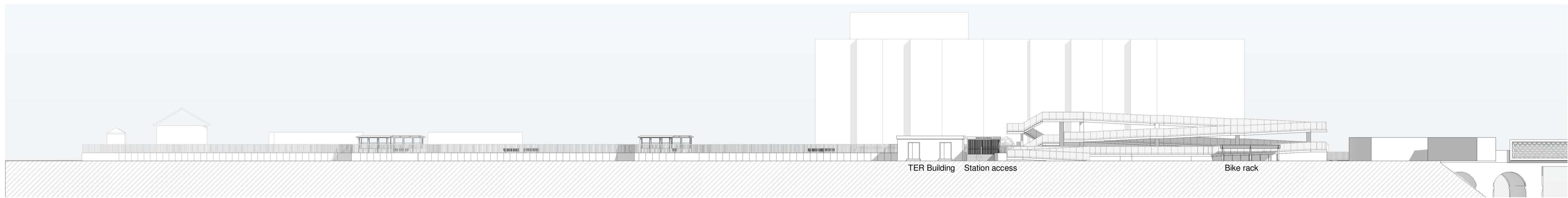
Engineering Designer	
ATKINS	
Supported by:	
TYPISA	
Member of the SNC-Lavalin Group	
Supported by:	
RPS	
Drawn	AML
Checked	PCO
Approved	JPN
QMS Code	

Project Title	
DART + SOUTH WEST	
Drawing Title	
HEUSTON WEST ST. CONCEPT DESIGN PERSPECTIVE VIEWS	
Drawing File Name	
DP-04-23-DWG-BU-TTA-37623	
Version	v01
Status	S3

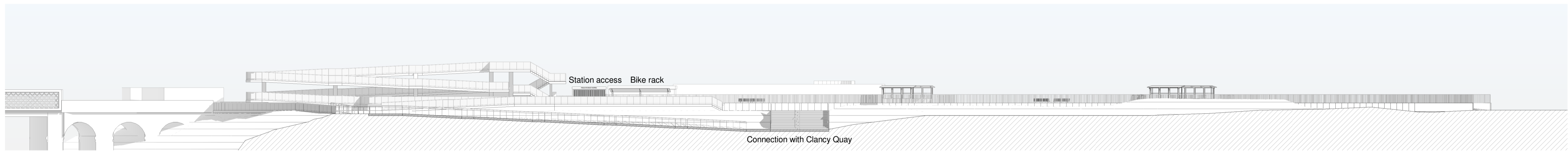
DO NOT SCALE USE FIGURED DIMENSIONS ONLY



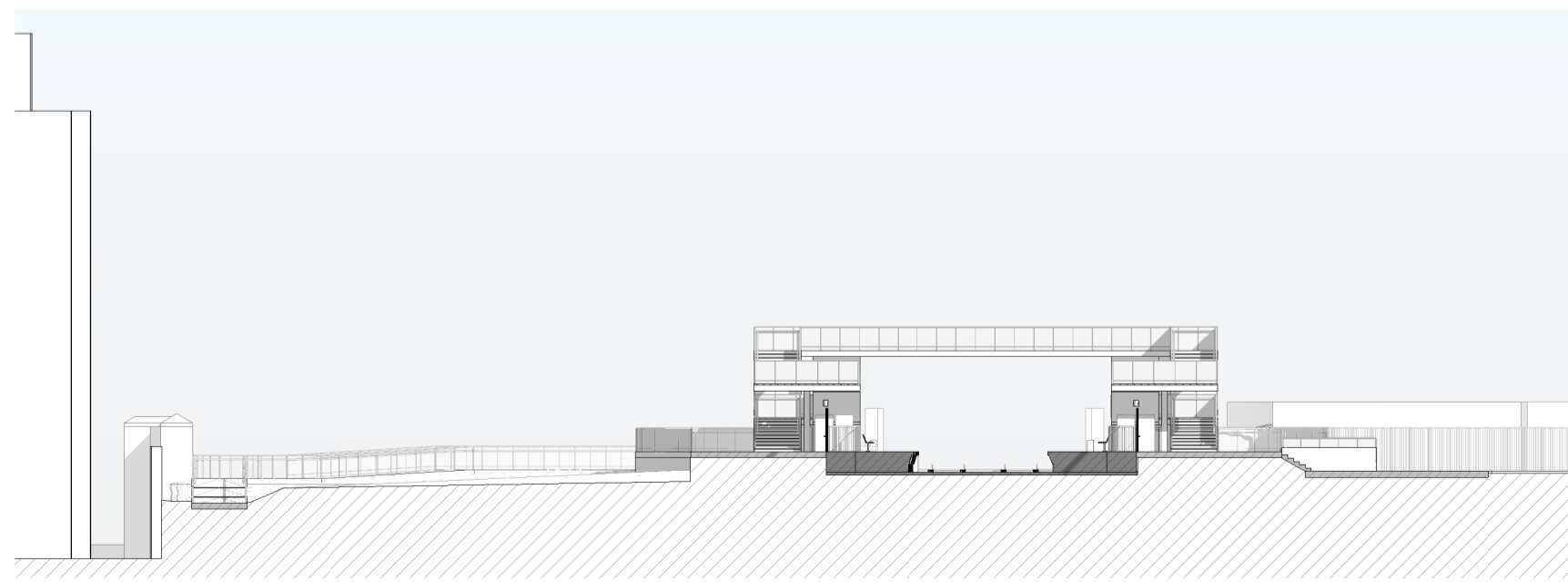
1 PLATFORM FLOORPLAN  
1 : 350



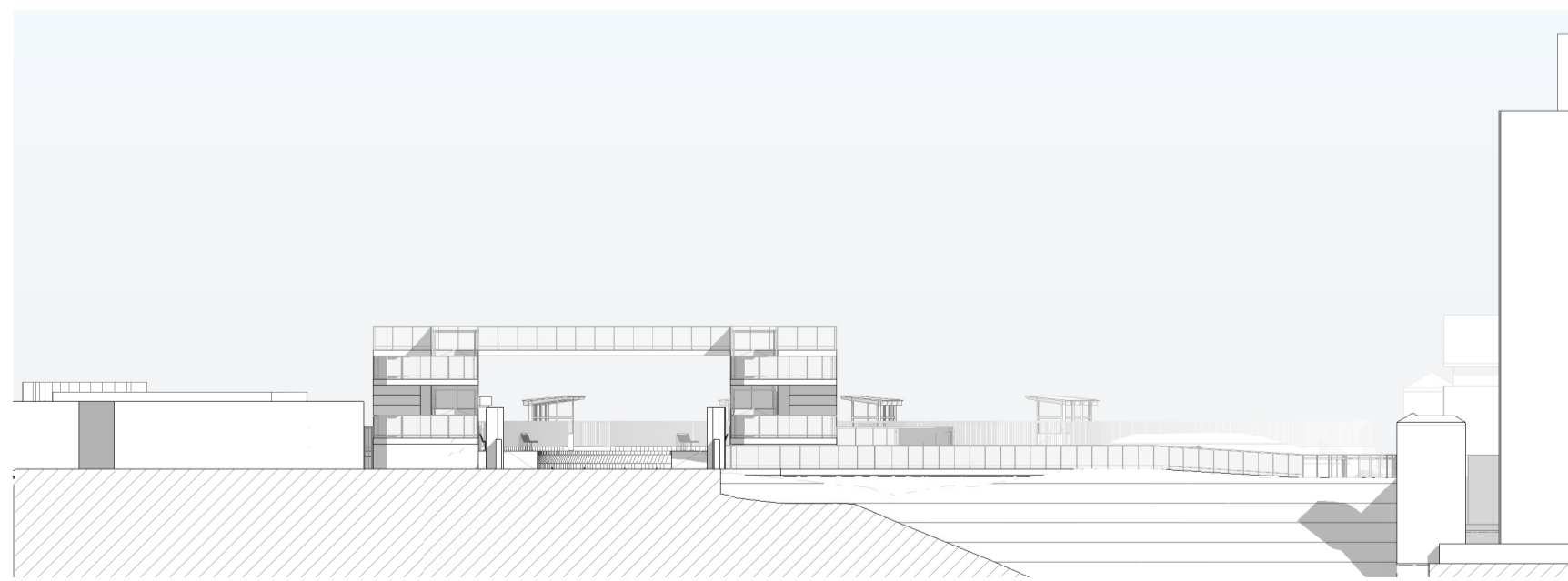
2 EAST ELEVATION  
1 : 350



3 WEST ELEVATION  
1 : 350



4 CROSS SECTION 01  
1 : 350



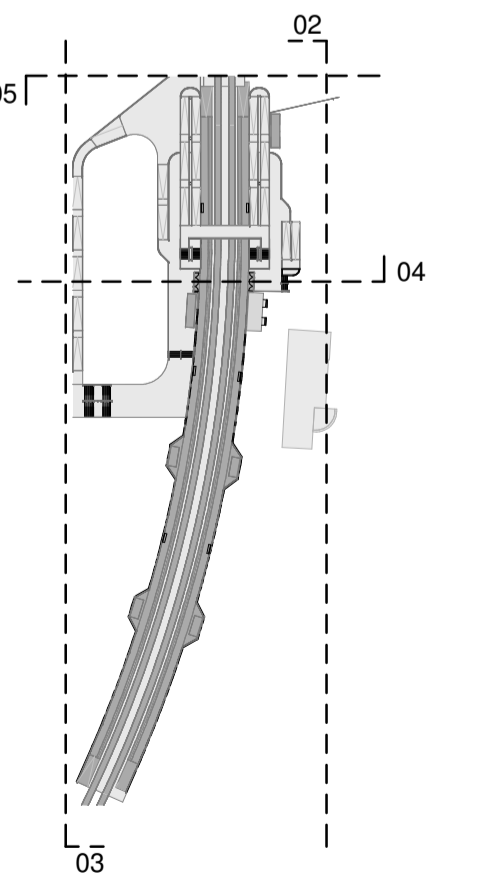
5 CROSS SECTION 02  
1 : 350

NOTES:

Level +0.00m corresponds to top of rail in the station area, which is +8.735m AOD.

Platforms' position is indicative. They must be coordinated with PWay team.

Site information is only indicative.

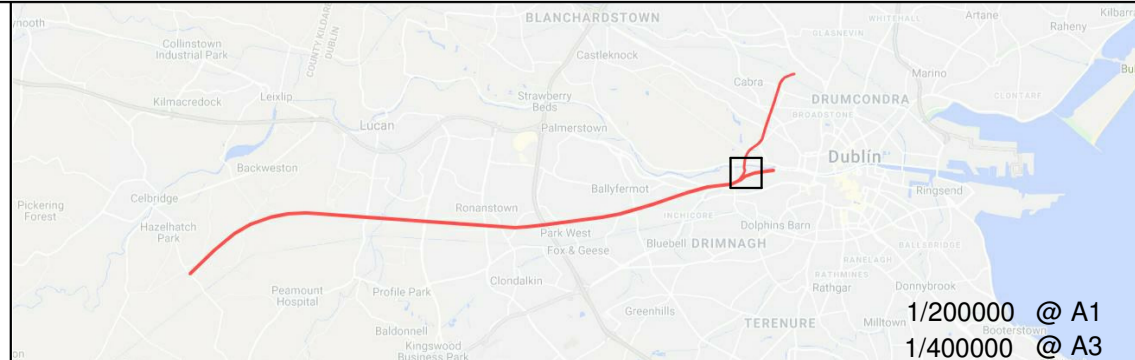


© Irish Rail (2021). This drawing is confidential and the copyright in it is owned by Irish Rail. This drawing must not be either loaned, copied or otherwise reproduced in whole or in part or used for any purpose without the prior permission of Irish Rail.

© Ordnance Survey Ireland and government of Ireland. All O.S. Data used for plans are printed under: "Copyright Ordnance Survey Ireland" Survey No. 0039721. (OSI Aerial Data or OSI Lidar Data) & Survey No. 2020/OSI\_NMA\_180 (OSI Vector Data).

All elevations are in metres and relate to OSI Geoid Model (OSGM02) Main Head as defined by existing Project Control.

All Co-ordinates are in Irish Transverse Mercator Grid (ITM) as defined by OSI active GPS station Tallaght College (TLLG).



Rev	Date	Drn	Chk'd	App'd	Description
v01	27/10/2021	AML	PCO	JPN	ISSUED FOR PUBLIC CONSULTATION 2

Client	<b>Iarnród Éireann</b> Irish Rail
Date	27/10/2021
Project Code	TTA

Engineering Designer	<b>ATKINS</b> TYPSA
Supported by:	<b>rps</b>
Drawn	AML
Checked	PCO
Approved	JPN
QMS Code	

Project Title	<b>DART + SOUTH WEST</b>		
Drawing Title	<b>HEUSTON WEST ST. CONCEPT DESIGN STATION AND PLATFORMS' ELEVATIONS AND FLOORPLAN</b>		
Drawing File Name	DP-04-23-DWG-BU-TTA-37624	Version	v01
Status	S3		

DO NOT SCALE USE FIGURED DIMENSIONS ONLY



Legend:

- Renewed Track / Slewed Track
- Existing Track to be Retained (Main Lines)
- Existing Track to be Retained (Not Main Lines)
- Existing Track to be Removed
- IE Property Boundary
- Proposed Retaining Wall
- Type of Turnout
- Attenuation Tank
- Low Voltage/Telecommunications/Signalling cabinets

1. Design is based on topographical survey QT-94577-Dart-Southwest Section\_01 to 10 (DWG format) in ITM coordinates.
2. Design speed in Heuston yard is 30km/h (20mph).
3. Access to Platforms 6, 7 and 8 and Carriage Sidings to be electrified

NOTE:

INFORMATION IS PRESENTED FOR PUBLIC CONSULTATION NO. 2.

NOT ALL DESIGN DETAIL OR CONSTRUCTION RELATED DETAIL ARE KNOWN AT THIS TIME. E.G. SUBSTATION LOCATIONS, CONSTRUCTION COMPOUNDS, TEMPORARY BRIDGE REQUIREMENTS, TEMPORARY UTILITY DIVERSIONS AND OTHER ELEMENTS

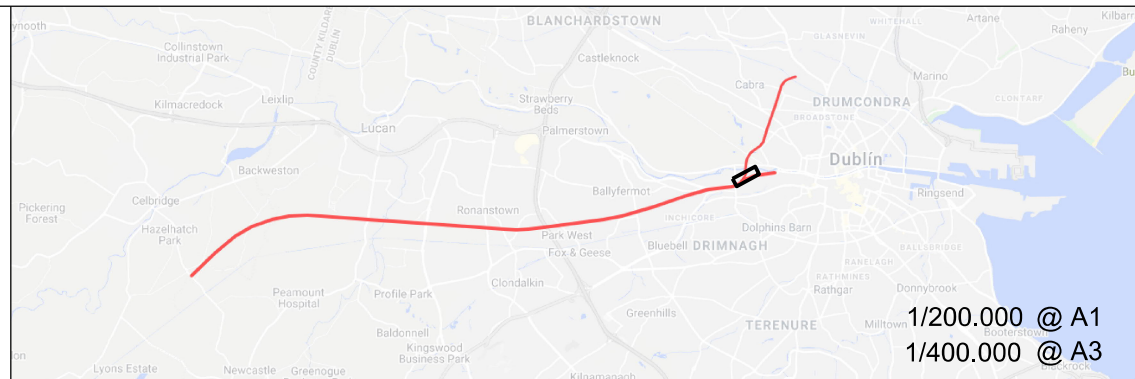
POTENTIAL INTERFERENCE WITH PROPERTY RIGHTS IS BASED ON THE LEVEL OF INFORMATION AND DESIGN AVAILABLE AT THIS TIME. FURTHER WORK INCLUDING DETAILED DESIGN AND TECHNICAL AND CONSTRUCTION RELATED SOLUTIONS WILL SEEK TO MINIMISE POTENTIAL INTERFERENCE WITH PROPERTY RIGHTS

© Irish Rail (2020). This drawing is confidential and the copyright in it is owned by Irish Rail. This drawing must not be either loaned, copied or otherwise reproduced in whole or in part or used for any purpose without the prior permission of Irish Rail.

© Ordnance Survey Ireland and government of Ireland. All O.S. Data used for plans are printed under: "Copyright Ordnance Survey Ireland" Survey No. 0039720, (OSi Aerial Data or OSi Lidar Data) & Survey No. 2020/OSi\_NMA\_180 (OSi Vector Data).

All elevations are in metres and relate to OSi Geoid Model (OSGM02) Mean Head as defined by existing Project Control.

All Co-ordinates are in Irish Transverse Mercator Grid (ITM) as defined by OSi active GPS station Tallaght College (TLLG).



Rev	Date	Dm	Chk'd	App'd	Description
v01	21/09/21	CDM	JYM	PR	ISSUED FOR PUBLIC CONSULTATION 2

Client: **Iarnród Éireann Irish Rail**

Engineering Designer: **ATKINS** (Member of the SNC-Lavalin Group)

Supported by: **TYPSA** and **rps**

Date: 21/09/21 Scale: 1:1000 @ A1, 1:2000 @ A3

Project Code: Issuer

Drawn: CDM Checked: JYM Approved: PR

QMS Code

Project Title: **DART + SOUTH WEST**

Drawing Title: **HEUSTON YARD TRACK PLAN LAYOUT**

Drawing File Name: **DP-04-23-DWG-PW-TTA-31990**

Version: **v01** Status: **S3**

DO NOT SCALE USE FIGURED DIMENSIONS ONLY