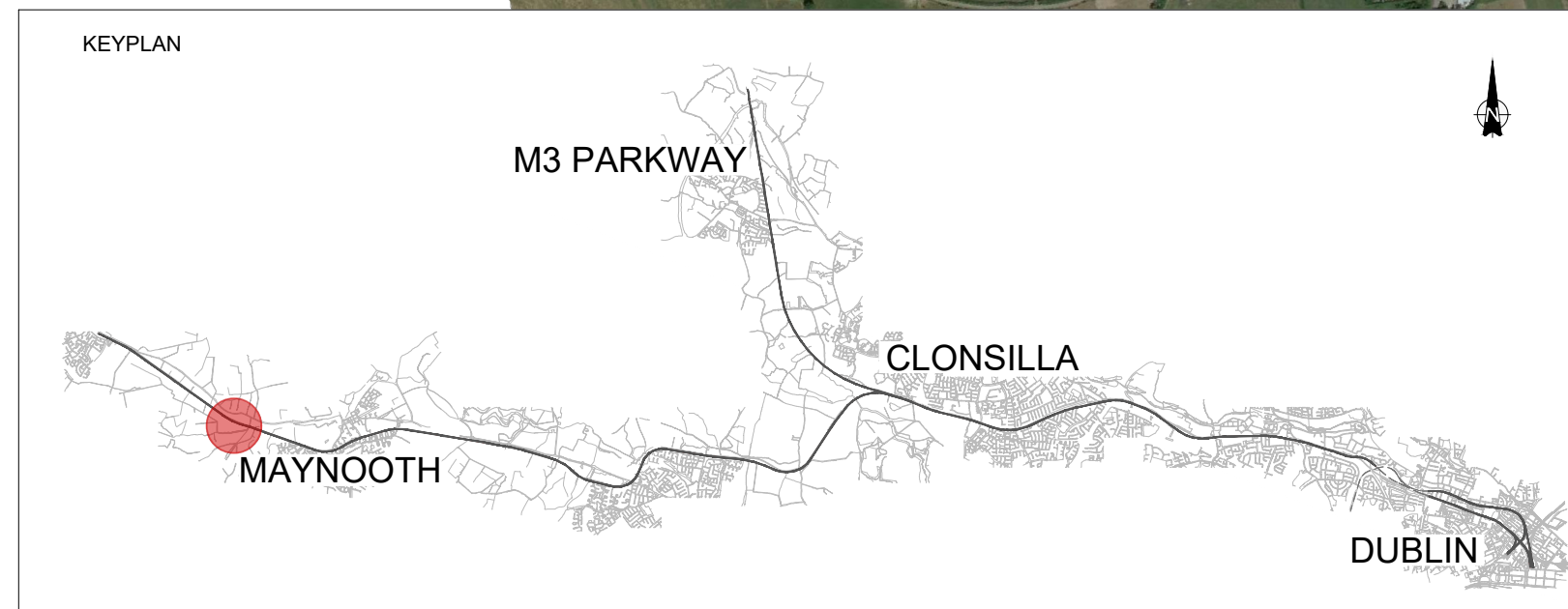
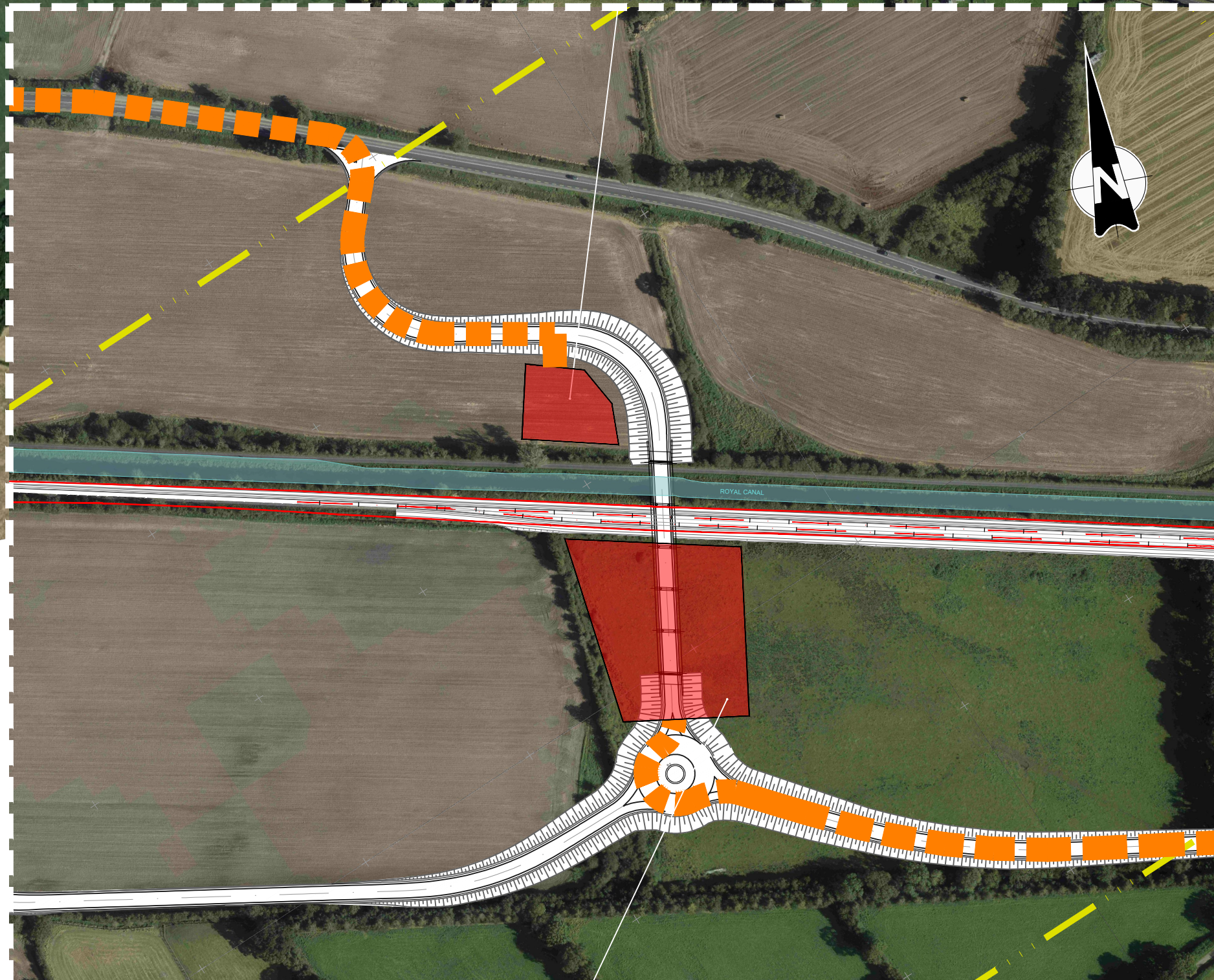


Figure 01 - Scale 1:2500



LEGEND	
	Temporary Construction Compound
	Access route
	Optional access route
	Irish Rail boundary

REV.	DATE	DESCRIPTION	DFL	MFP	CCH
V 01	May 2021	PUBLIC CONSULTATION			

© Irish Rail (2020). This drawing is confidential and the copyright in it is owned by Irish Rail. This drawing must not be either loaned, copied or otherwise reproduced in whole or in part or used for any purpose without the prior permission of Irish Rail. Ordnance Survey Ireland and Government of Ireland. All O.S. data used for plans are printed under "0039720 (OS) Aerial Data or OS Lidar Data" & Survey No. 2020/OSL_NMA_180 (OS) Vector Data. All elevations are in metres and relate to OS Geoid Model (OSGM02) Mean Head as defined by existing Project Control. All Co-ordinates are in Irish Transverse Mercator Grid (ITM) as defined by OS active GPS station Tallaght College (TLLG).

Client

Consultant

Project

Drawing Title

COMPOUND LOCATION
ACCESS ROUTES
CC-STR-S7-92850-U AND CC-STR-S7-92900-U

Scale: 1:7500 @ A1

Drawing Number	Project	Originator	Discipline	Location	Type	Role	Number	Phase
MAY	MDC	RGN	OTHE	DR	Y	0001	B	

Date:	Job No:	Status:	Rev:	Sheet:
May 2021	P/101086	S4 Suitable for Acceptance	V 01	54 of 65