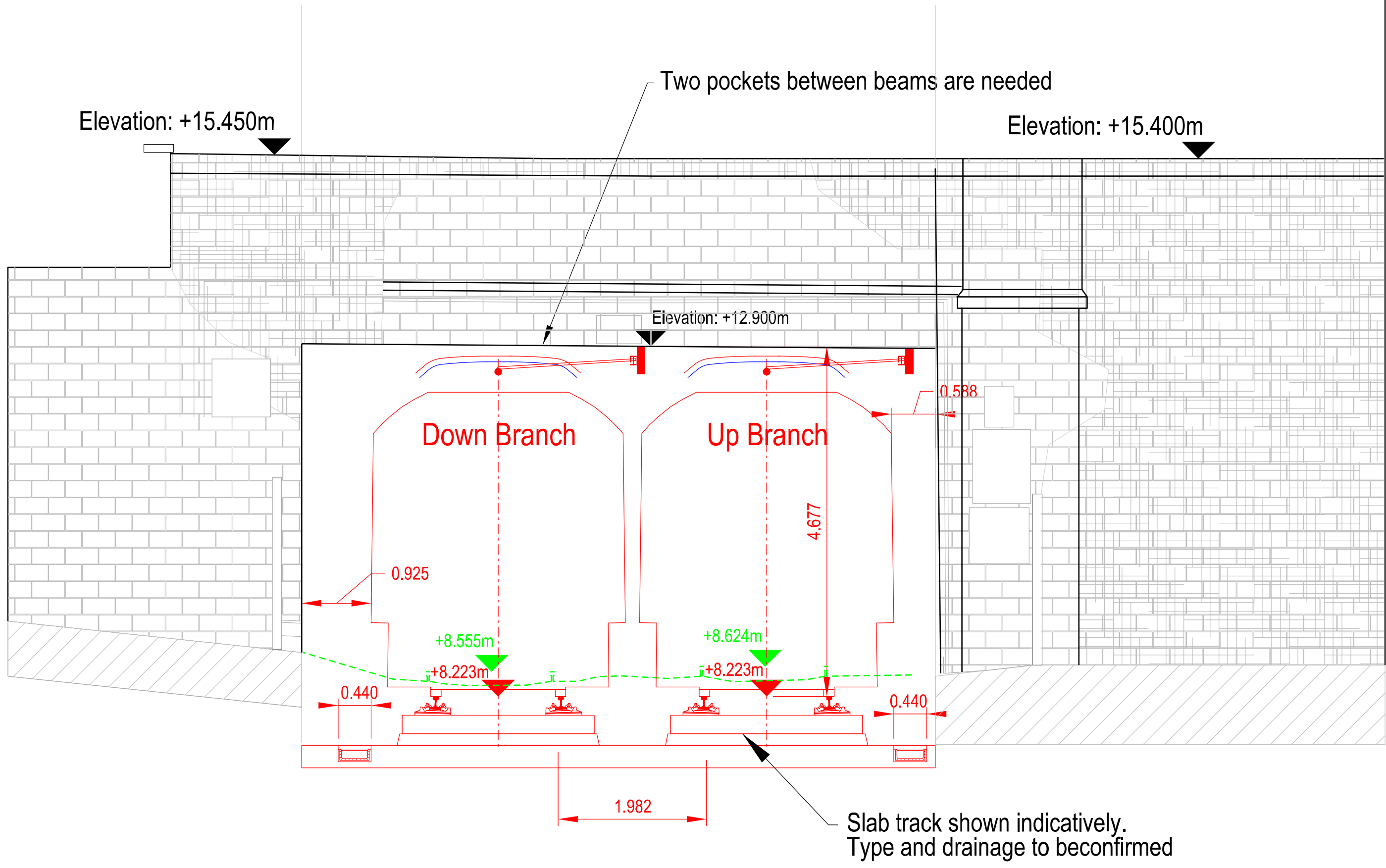


Legend:

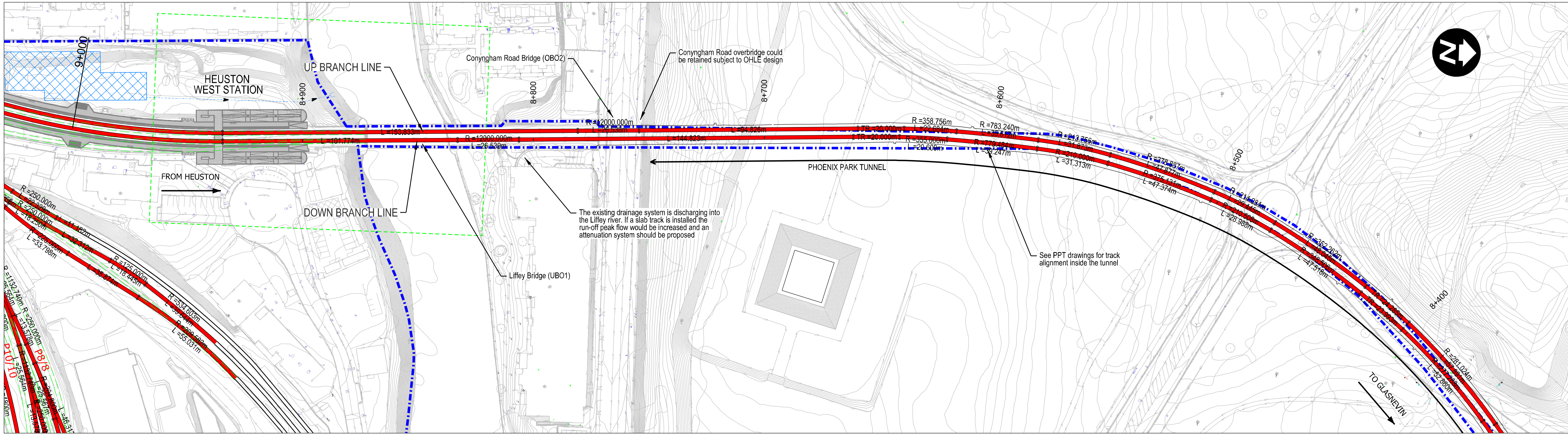
Existing Elements

To be Removed

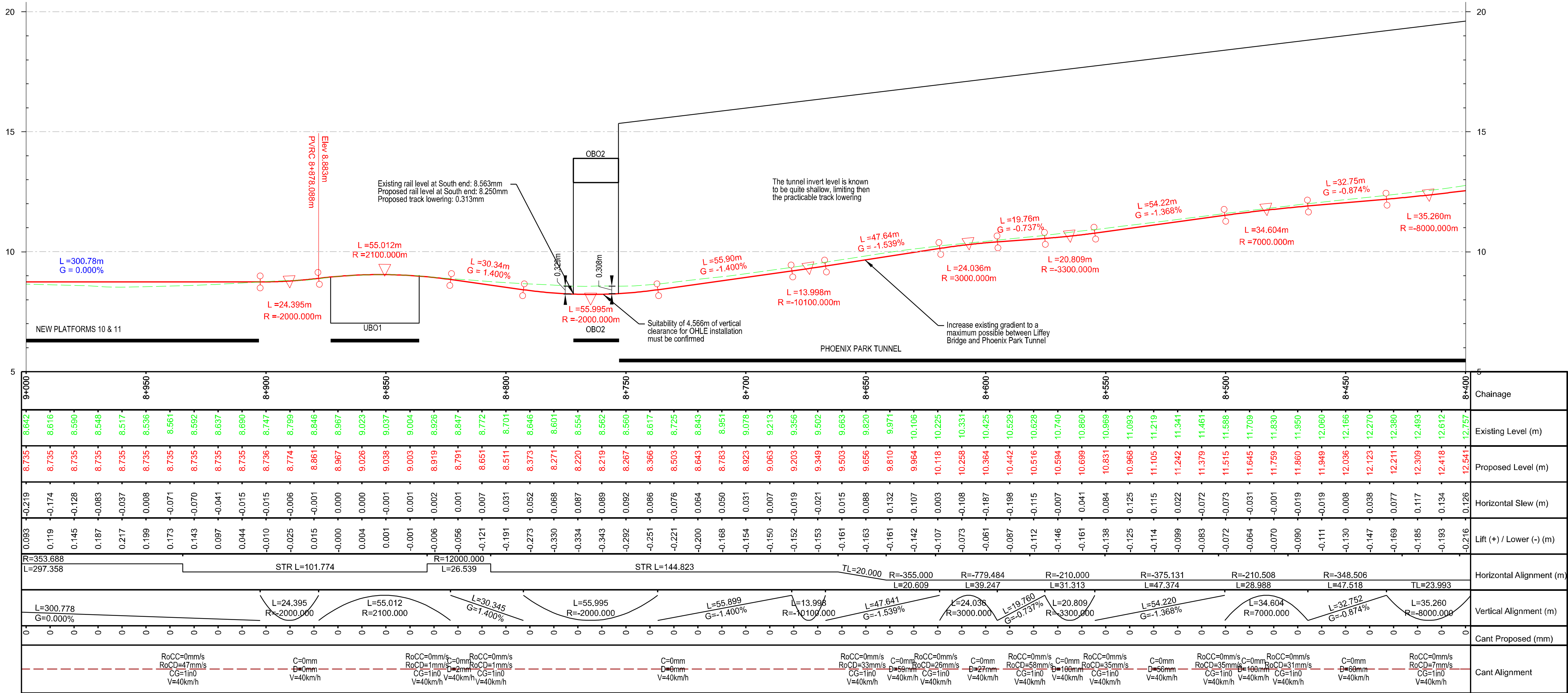
Renewed Elements



VIEW FROM GLASNEVIN JUNCTION TO HEUSTON STATION



Plan Scale 1:1000



Profile Scale 1:1000 / 1:100

Legend:

Plan

- Renewed Track / Slewled Track
- Existing Track to be Retained (Main Lines)
- Existing Track to be Retained (Not Main Lines)
- Existing Track to be Removed
- IE Property Boundary
- Proposed Retaining Wall
- P8/8 Type of Turnout
- Attenuation Tank
- Low Voltage/Telecommunications/Signalling cabinets

Longitudinal Profile

- Proposed vertical alignment
- Existing vertical alignment

- Design is based on topographical survey QT-94577-Dart-Southwest Section_01 to 10 (DWG format) in ITM coordinates.
- It is assumed that the proposed slab track section (that is required within the Phoenix Park Tunnel) will be extended up to the Liffey River underbridge.
- Branch tracks to be electrified.
- Vertical profile is shown for the Down Branch. Data of the existing track is referred to Down Branch.

NOTE:

INFORMATION IS PRESENTED FOR PUBLIC CONSULTATION NO. 2

NOT ALL DESIGN DETAIL OR CONSTRUCTION RELATED DETAIL ARE KNOWN AT THIS TIME. E.G. SUBSTATION LOCATIONS, CONSTRUCTION COMPOUNDS, TEMPORARY BRIDGE REQUIREMENTS, TEMPORARY UTILITY DIVERSIONS AND OTHER ELEMENTS

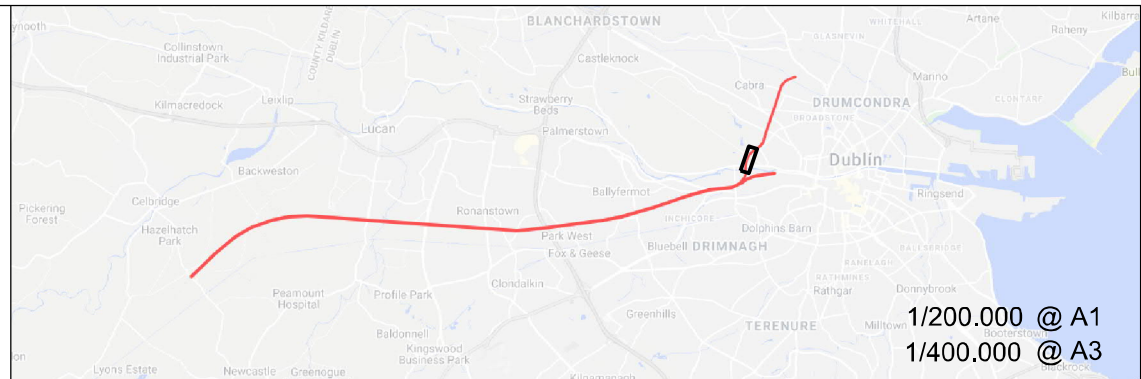
POTENTIAL INTERFERENCE WITH PROPERTY RIGHTS IS BASED ON THE LEVEL OF INFORMATION AND DESIGN AVAILABLE AT THIS TIME. FURTHER WORK INCLUDING DETAILED DESIGN AND TECHNICAL AND CONSTRUCTION RELATED SOLUTIONS WILL SEEK TO MINIMISE POTENTIAL INTERFERENCE WITH PROPERTY RIGHTS

© Irish Rail (2020). This drawing is confidential and the copyright in it is owned by Irish Rail. This drawing must not be either loaned, copied or otherwise reproduced in whole or in part or used for any purpose without the prior permission of Irish Rail.

© Ordnance Survey Ireland and government of Ireland. All O.S. Data used for plans are printed under: "Copyright Ordnance Survey Ireland" Survey No. 0039720, (OSI Aerial Data or OSI Lidar Data) & Survey No. 2020/OSI_NMA_180 (OSI Vector Data).

All elevations are in metres and relate to OSI Geoid Model (OSGM02) Mean Head as defined by existing Project Control.

All Co-ordinates are in Irish Transverse Mercator Grid (ITM) as defined by OSI active GPS station Tallaght College (TLLG).

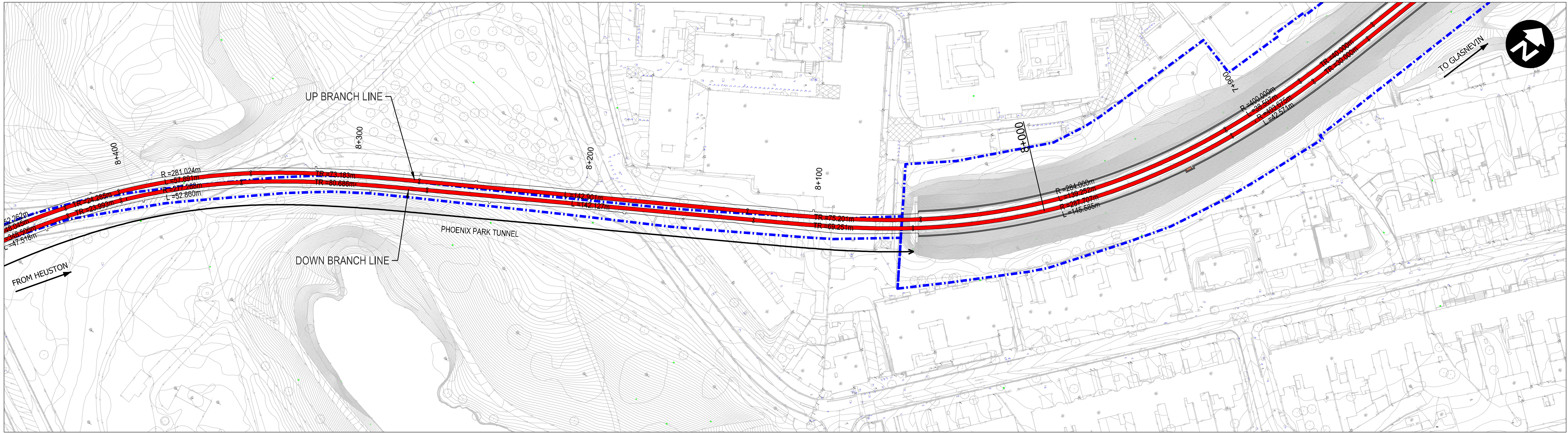


Rev	Date	Dm	Chk'd	App'd	Description
v01	21/09/21	CDM	JYM	PR	ISSUED FOR PUBLIC CONSULTATION 2

Client		Engineering Designer	
Date		Drawn	
Scale		Checked	
Project Code		Approved	
Issuer		PR	
ATK		QMS Code	

Project Title		Drawing Title	
DART + SOUTH WEST		CONYNGHAM ROAD (OBO2) AND PHOENIX PARK TUNNEL TRACK PLAN LAYOUT AND LONGITUDINAL PROFILE (Sheet 1 of 2)	
Drawing File Name		Version	
DP-04-23-DWG-PW-TTA-36992		v01	
Status		S3	

DO NOT SCALE USE FIGURED DIMENSIONS ONLY



Legend:

Plan

Renewed Track / Slew'd Track

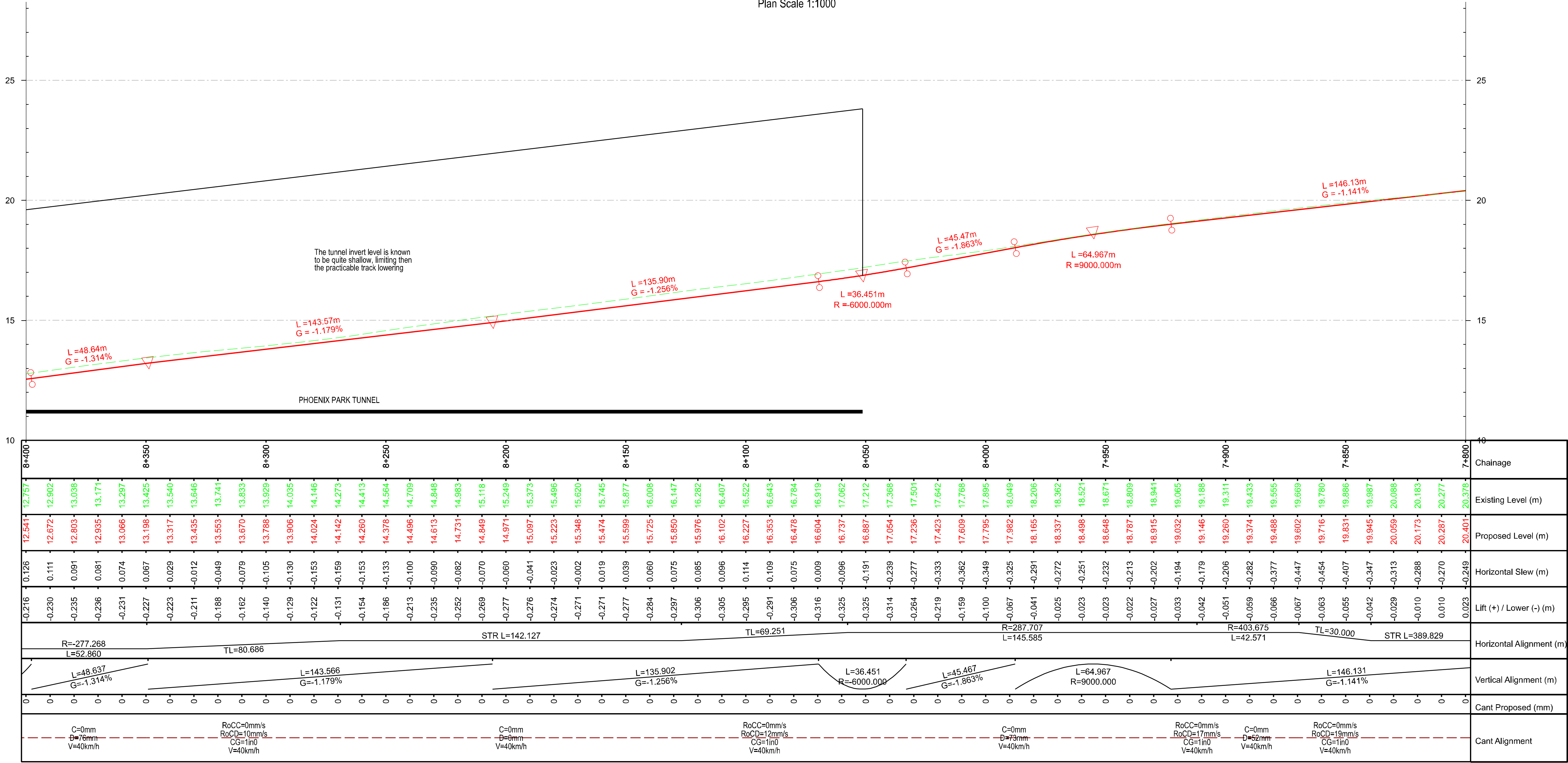
Existing Track to be Retained (Main Lines)

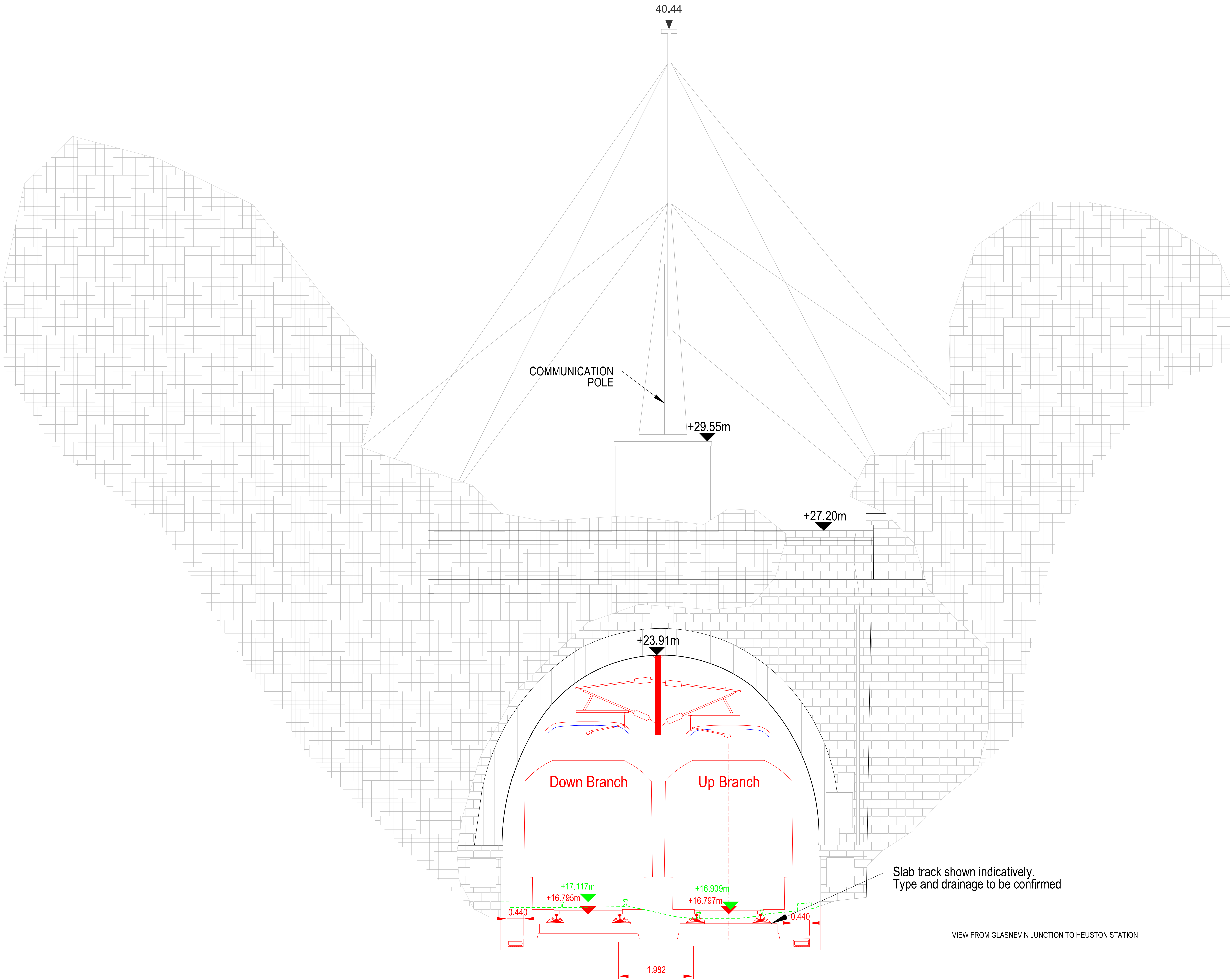
P8/8

Longitudinal Profile

1. Design is based on topographical survey QT-94577-Dart-Southwest Section_01 to 10 (DWG format) in ITM coordinates.
2. It is assumed that the proposed slab track section (that is required within the Phoenix Park Tunnel) will be extended up to the Liffey River underbridge.
3. Branch tracks to be electrified.
4. Vertical profile is shown for the Down Branch. Data of the existing track is referred to Down Branch.

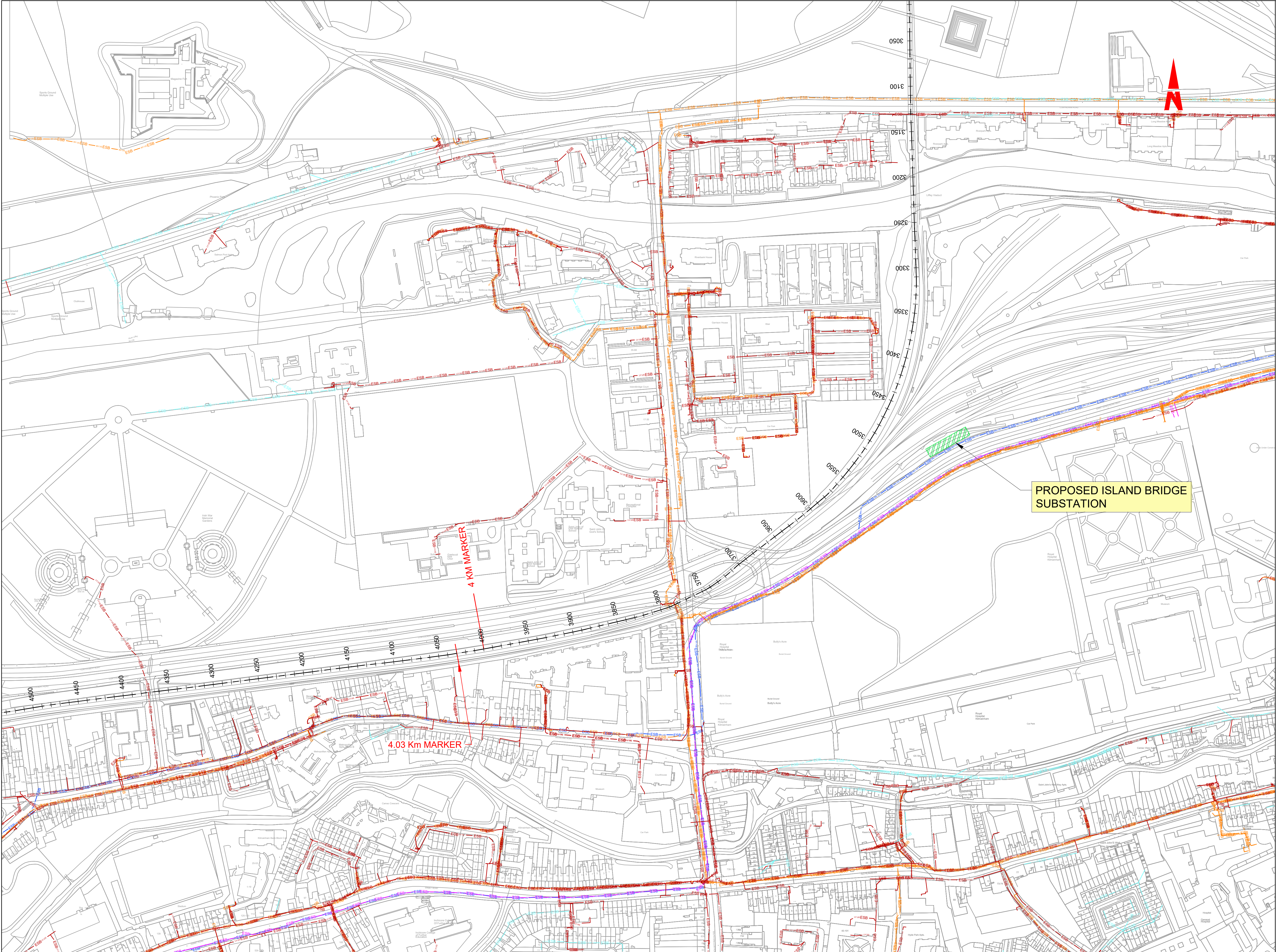
Plan Scale 1:1000





Legend:

- Existing Elements
- To be Removed
- Renewed Elements



- LEGEND :
- PROPOSED SUBSTATION
 - 220kV NETWORK UNDERGROUND CABLE
 - 220kV NETWORK OVERHEAD CABLE
 - 110kV NETWORK UNDERGROUND CABLE
 - 110kV NETWORK OVERHEAD CABLE
 - 38kV NETWORK UNDERGROUND CABLE
 - 38kV NETWORK OVERHEAD CABLE
 - MV NETWORK UNDERGROUND CABLE
 - MV NETWORK OVERHEAD CABLE
 - LV NETWORK UNDERGROUND CABLE
 - LV NETWORK OVERHEAD LINE

© Irish Rail (2021). This drawing is confidential and the copyright in it is owned by Irish Rail. This drawing must not be either loaned, copied or otherwise reproduced in whole or in part or used for any purpose without the prior permission of Irish Rail.

© Ordnance Survey Ireland and government of Ireland. All O.S. Data used for plans are printed under: "Copyright Ordnance Survey Ireland" Survey No. 0039721. (OSi Aerial Data or OSi Lidar Data) & Survey No. 2020/OSi_NMA_180 (OSi Vector Data).

All elevations are in metres and relate to OSi Geoid Model (OSGM02) Mean Head as defined by existing Project Control.

All Co-ordinates are in Irish Transverse Mercator Grid (ITM) as defined by OSi active GPS station Tallaght College (TLLG).



Rev	Date	Dm	Chk'd	App'd	Description
V01	28.10.21	DB	AB	DM	ISSUED FOR PUBLIC CONSULTATION 2

Date

12.07.21

Scale

1:2000 @ A1
1:4000 @ A3

Project Code

5199586

Issuer

ATK

Engineering Designer

Member of the SNC-Lavalin Group

Supported by

Drawn

DB

Checked

AB

Approved

DM

QMS Code

Client

Project Title

DART + SOUTH WEST

Drawing Title

ISLANDBRIDGE
IE PROPOSED SUBSTATION LOCATION

Drawing File Name

DP-04-23-DWG-EL-TTA-09421

Version

V01

Status

S3

DO NOT SCALE USE FIGURED DIMENSIONS ONLY