

## Memo

To:

From:	Carl Mogensen	Email:	
Date:	25 March 2021	Phone:	
Ref:	<ref>	cc:	<cc>
Subject:	DART+ Kildare   Planning Application Monitor		

### Introduction

This memo provides a monthly update to the baseline Planning Application Monitor issued in September 2020. The intention of these memos is to identify and track information relating to planning applications, planning approvals and construction activity for consideration as part of the DART+ design process.

This update includes all new planning applications made since the previous update within 200m from the centre line of the existing rail line and 400m from Hazelhatch. A wider 1 km distance from the centre line has been selected for Strategic Housing Developments (SHDs), Strategic Infrastructure Developments (SIDs) and local authority (Part 8) schemes.

An Excel spreadsheet listing all applications and relevant details is enclosed as part of this memo. Also enclosed is a corresponding set of maps to highlight the locations of these applications within the study area.

It should be noted that new applications generally do not appear on the local authorities' or An Bord Pleanála's (ABP) websites for up to two weeks from the date of lodgement. In this regard, the information presented in this update may not include all of the most recently lodged planning applications. These, however, will be captured in the following month's update.

### March 2021 Update

The planning application search for March 2021 found an additional 5 no. applications within the study area. The additional applications are for minor works (e.g. housing extensions).

These new applications are highlighted in the accompanying Excel spreadsheet (see column 3) and on the accompanying map set (orange pointers represent minor applications).

### Applications for Consideration

At the time of issuing the March Planning Application Monitoring Memo, there were no applications that may be of interest / relevance to the project due to the scale of development, land use, sensitivity, or proximity to the railway corridor. All additional applications were for minor works.



## Note

Should any application be of interest, please let the RO team know and we can provide more detailed information where available (e.g. site location maps, layout plans, Planners' Reports, details of conditions on Final Grants, reasons for refusal etc.). We can also monitor the progress of any active applications of interest as they progress through the planning system.

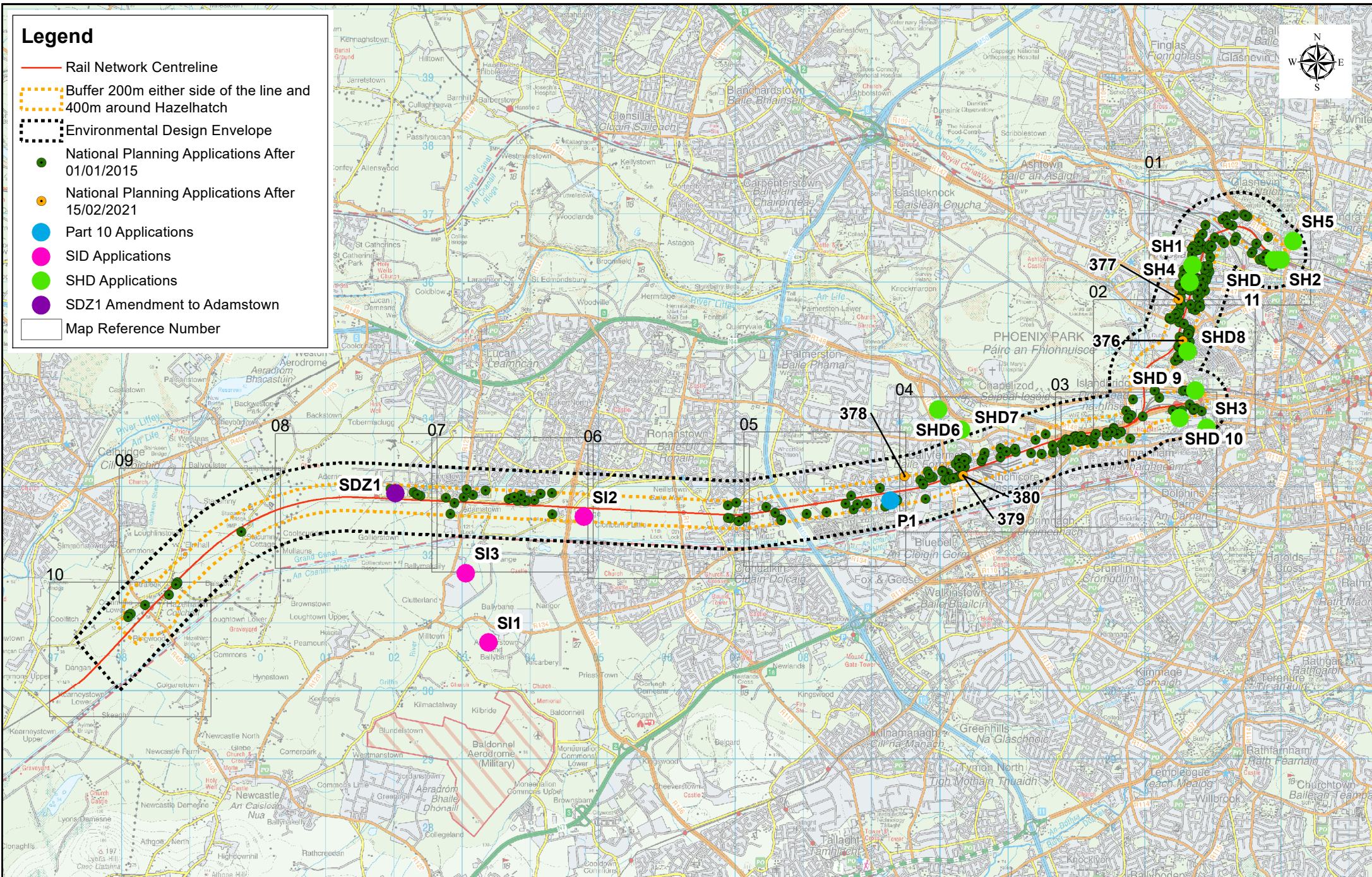
## Enclosures

- Planning Applications Monitor - Excel Spreadsheet
- Planning Applications Monitor - Corresponding Maps



## Legend

- Rail Network Centreline
- Buffer 200m either side of the line and 400m around Hazelhatch
- Environmental Design Envelope
- National Planning Applications After 01/01/2015
- National Planning Applications After 15/02/2021
- Part 10 Applications
- SID Applications
- SHD Applications
- SDZ1 Amendment to Adamstown
- Map Reference Number



© Irish Rail (2021). This drawing is confidential and the copyright in it is owned by Irish Rail. This drawing must not be either loaned, copied or otherwise reproduced in whole or in part or used for any purpose without the prior permission of Irish Rail.  
Data Source: National Planning Applications published by the Department of Housing, Planning and Local Government, An Bord Pleanála, Dublin City Council, South Dublin County Council, Kildare County Council.  
The contents of this publication are the sole responsibility of Iarnród Éireann and do not necessarily reflect the opinion of the European Union



**DART+ South West**

**NTA**  
National Transport Authority

**2040**  
Vision Statement

**European Union**  
2040

Rev	Date	Dn	Chkd	App'd	Description
v05	24/03/2021	NAR	CM	LK	March Issue
v04	24/02/2021	NAR	CM	LK	February Issue
v03	27/01/2021	IP	CM	LK	January Issue
v02	17/12/2020	IP	CM	LK	December Issue
v01	25/11/2020	IP	CM	LK	November Issue

**Iarnród Éireann Irish Rail**

**Engineering Designer**  
**ATKINS**  
Supported by **rps**

**Project Title**  
**DART + SOUTH WEST**

**Drawing Title**  
**Planning Applications Monitoring Since 2015**

**Drawing File Name**  
DP-04-23-DWG-RO-TT-A-9851

**Version**  
v05

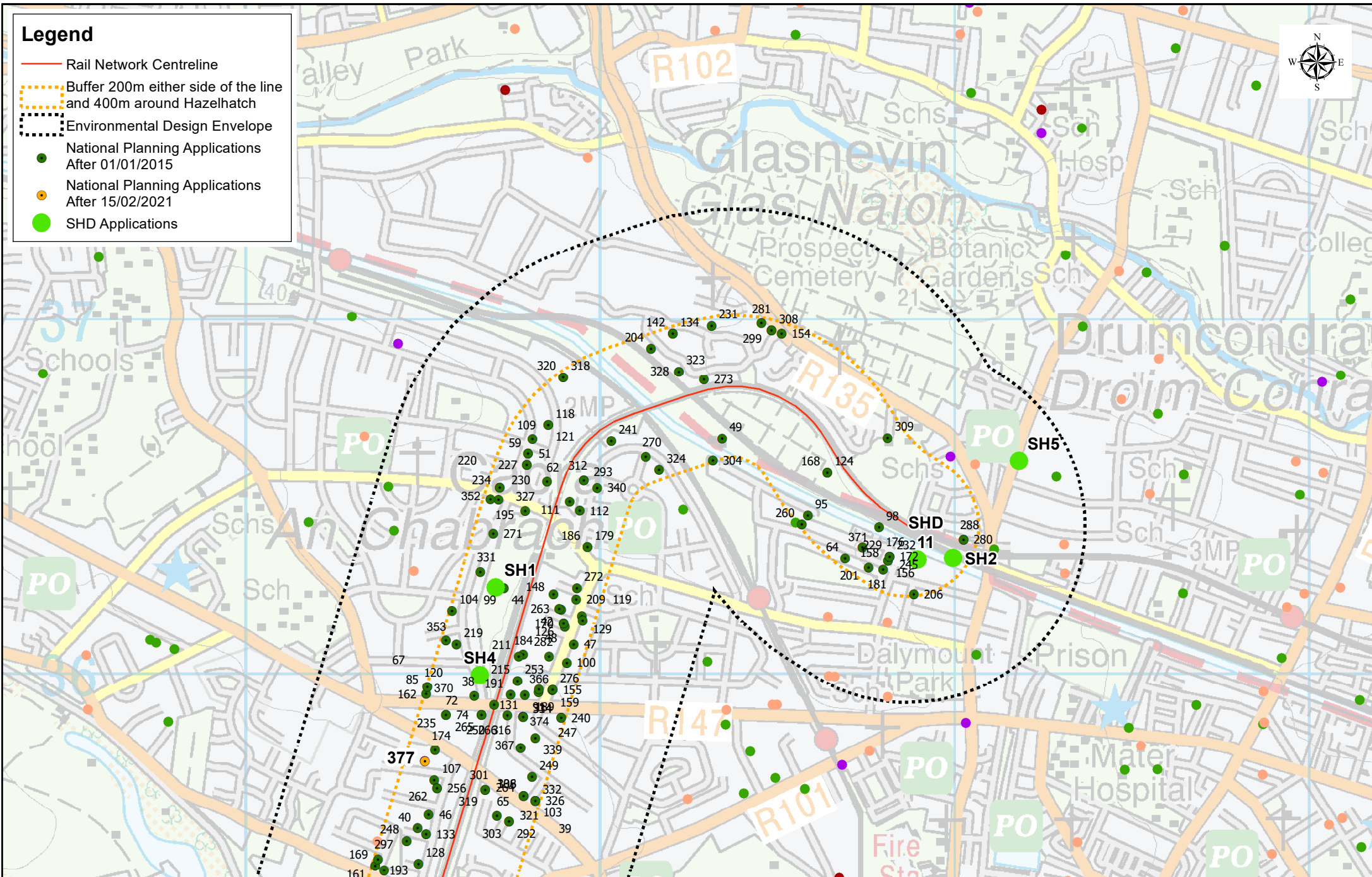
**Status**  
S0

DO NOT SCALE USE FIGURED DIMENSIONS ONLY



## Legend

- Rail Network Centreline
- Buffer 200m either side of the line and 400m around Hazelhatch
- Environmental Design Envelope
- National Planning Applications After 01/01/2015
- National Planning Applications After 15/02/2021
- SHD Applications



© Irish Rail (2021). This drawing is confidential and the copyright in it is owned by Irish Rail. This drawing must not be either loaned, copied or otherwise reproduced in whole or in part or used for any purpose without the prior permission of Irish Rail.  
Data Source: National Planning Applications published by the Department of Housing, Planning and Local Government, An Bord Pleanála, Dublin City Council, South Dublin County Council, Kildare County Council.  
The contents of this publication are the sole responsibility of Iarnród Éireann and do not necessarily reflect the opinion of the European Union.



Rev	Date	Drn	Chk'd	App'd	Description
v05	24/03/2021	NAR	CM	LK	March Issue
v04	24/02/2021	NAR	CM	LK	February Issue
v03	27/01/2021	NAR	CM	LK	January Issue
v02	17/12/2020	IP	CM	LK	December Issue
v01	25/11/2020	IP	CM	LK	November Issue



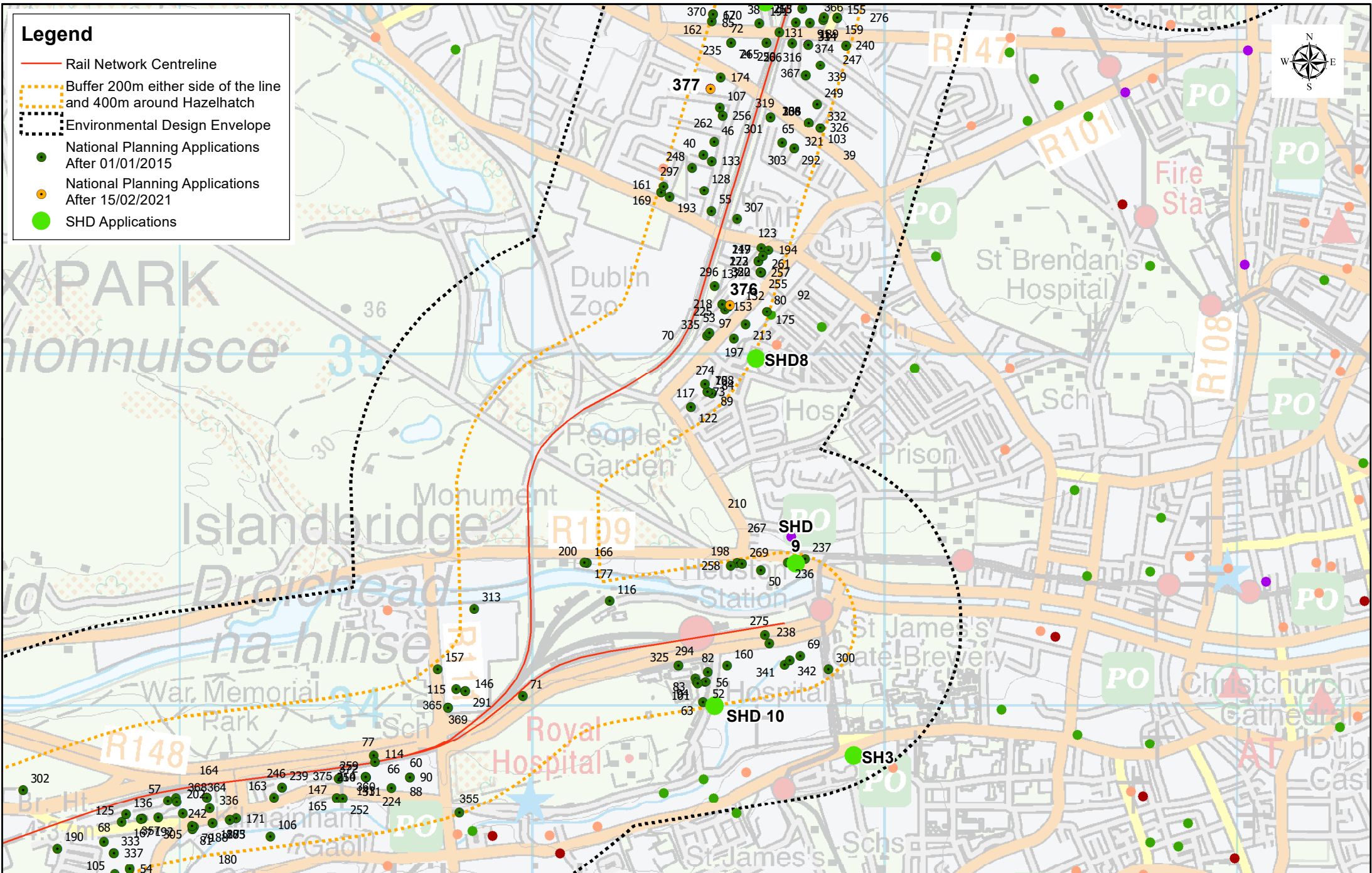
Client	Engineering Designer
Date	25/03/2021
Scale	1:13,470 @ A4
Project Code	5199586
Issue	TTARPS
Drawn	NAR
Checked	CM
Approved	LK
Supported by	ATKINS
Supported by	TVPSA
Supported by	TPS
Supported by	TPS
OMS Code	

Project Title	DART + SOUTH WEST
Drawing Title	Planning Applications Monitoring Since 2015 - Map 01 of 10
Drawing File Name	DP-04-23-DWG-RO-TTA-9852
Version	v05
Status	S0

DO NOT SCALE USE FIGURED DIMENSIONS ONLY

## Legend

- Rail Network Centreline
- Buffer 200m either side of the line and 400m around Hazelhatch
- Environmental Design Envelope
- National Planning Applications After 01/01/2015
- National Planning Applications After 15/02/2021
- SHD Applications



© Irish Rail (2021). This drawing is confidential and the copyright in it is owned by Irish Rail. This drawing must not be either loaned, copied or otherwise reproduced in whole or in part or used for any purpose without the prior permission of Irish Rail.  
Data Source: National Planning Applications published by the Department of Housing, Planning and Local Government, An Bord Pleanála, Dublin City Council, South Dublin County Council, Kildare County Council.  
The contents of this publication are the sole responsibility of Iarnród Éireann and do not necessarily reflect the opinion of the European Union.



**DART+ South West**

**NTA**  
National Transport Authority

**2040**  
Vision Statement

**EUROPEAN UNION**  
European Union

Rev	Date	Drn	Chkd	App'd	Description
v05	24/03/2021	NAR	CM	LK	March Issue
v04	24/02/2021	NAR	CM	LK	February Issue
v03	27/01/2021	NAR	CM	LK	January Issue
v02	17/12/2020	IP	CM	LK	December Issue
v01	25/11/2020	IP	CM	LK	November Issue

**Iarnród Éireann**  
**Irish Rail**

Date: 25/03/2021  
Project Code: 5199586

Scale: 1:13,470 @ A4  
Issued by: TTARPS

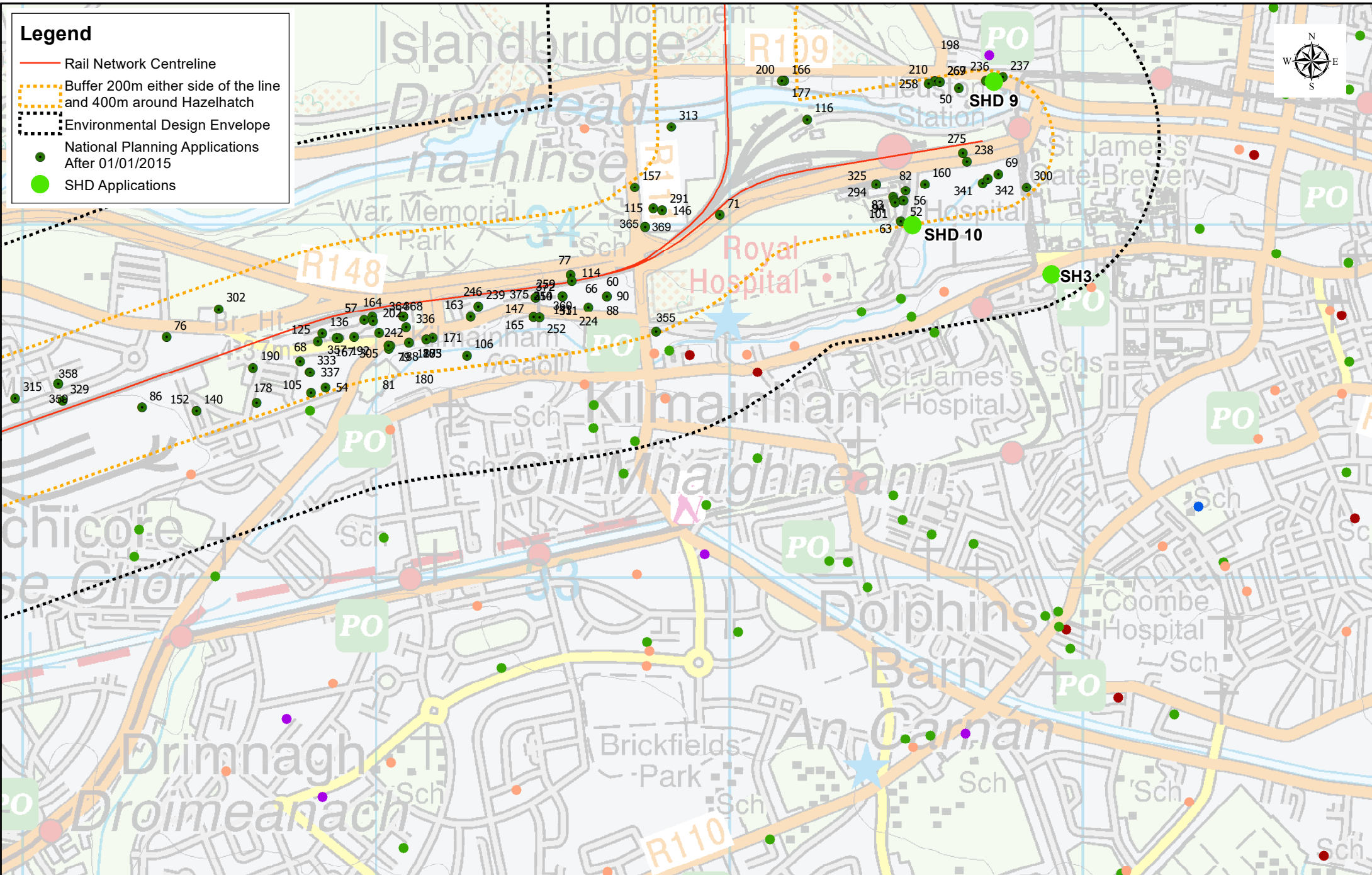
Engineering Designer  
**ATKINS**  
Supported by:  
**TYPSA**  
**rps**

Drawn: NAR  
Checked: CM  
Approved: LK  
OMS Code

Project Title	DART + SOUTH WEST		
Drawing Title	Planning Applications Monitoring Since 2015 - Map 02 of 10		
Drawing File Name	DP-04-23-DWG-RO-TTA-9852	Version	v05
Status	S0		

DO NOT SCALE USE FIGURED DIMENSIONS ONLY





© Irish Rail (2021). This drawing is confidential and the copyright in it is owned by Irish Rail. This drawing must not be either loaned, copied or otherwise reproduced in whole or in part or used for any purpose without the prior permission of Irish Rail.  
Data Source: National Planning Applications published by the Department of Housing, Planning and Local Government, An Bord Pleanála, Dublin City Council, South Dublin County Council, Kildare County Council.  
The contents of this publication are the sole responsibility of Iarnród Éireann and do not necessarily reflect the opinion of the European Union.



Rev	Date	Drn	Chkd	App'd	Description
v05	24/03/2021	NAR	CM	LK	March Issue
v04	24/02/2021	NAR	CM	LK	February Issue
v03	27/01/2021	NAR	CM	LK	January Issue
v02	17/12/2020	IP	CM	LK	December Issue
v01	25/11/2020	IP	CM	LK	November Issue

<b>Client</b> Iarnród Éireann Irish Rail	<b>Scale</b> 1:13,470 @ A4	<b>Drawn</b> NAR	<b>Checked</b> CM	<b>Approved</b> LK
<b>Date</b> 25/03/2021	<b>Project Code</b> 5199586	<b>Issue</b> TTARPS	<b>QMS Code</b>	

<b>Engineering Designer</b> ATKINS TYPSA Supported by: rps	<b>Project Title</b> DART + SOUTH WEST
<b>Drawing Title</b> Planning Applications Monitoring Since 2015 - Map 03 of 10	<b>Drawing File Name</b> DP-04-23-DWG-RO-TTA-9852
<b>Version</b> v05	<b>Status</b> S0

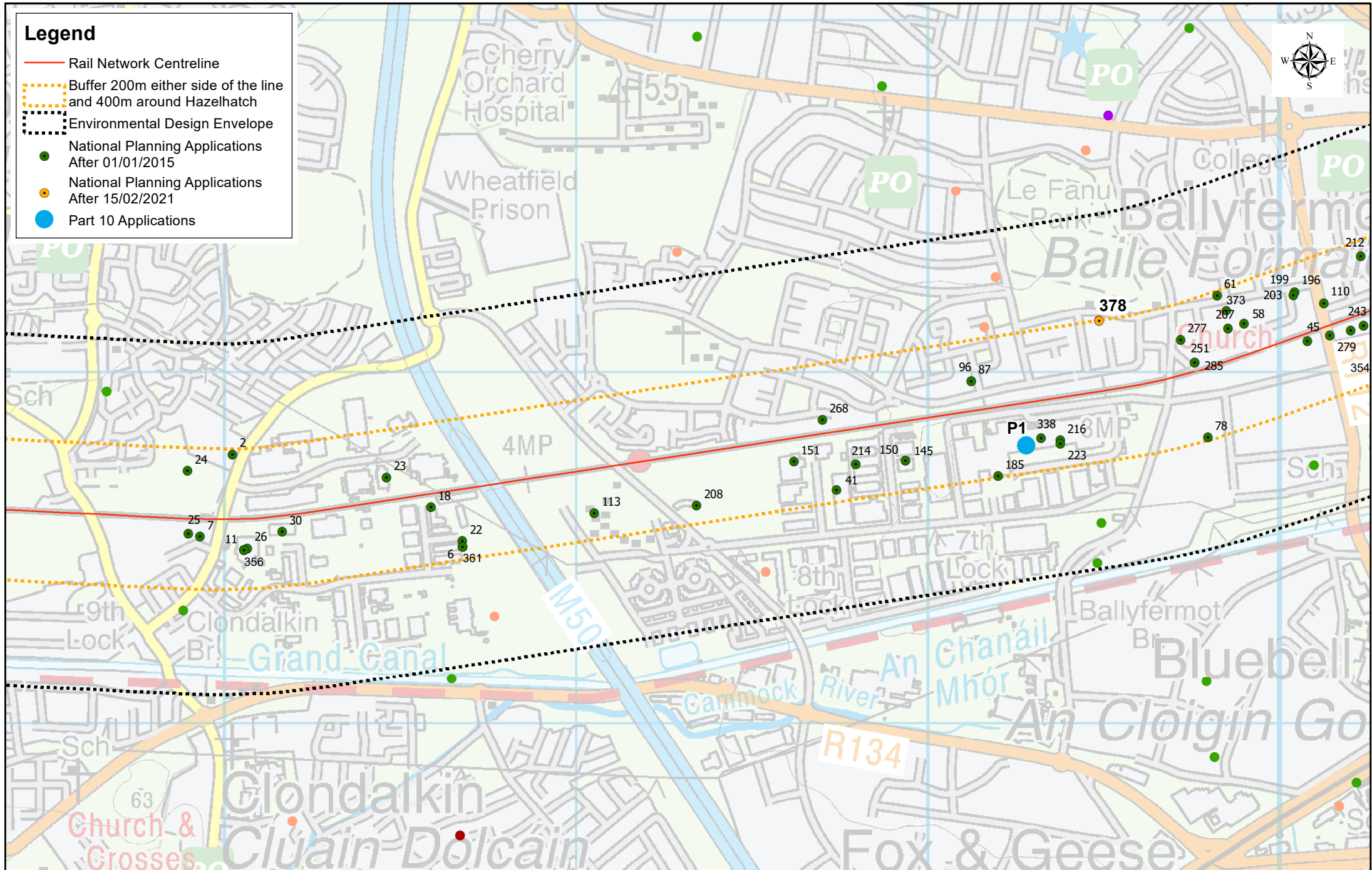
DO NOT SCALE USE FIGURED DIMENSIONS ONLY



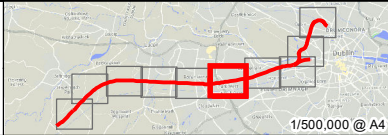


## Legend

- Rail Network Centreline
- Buffer 200m either side of the line and 400m around Hazelhatch
- Environmental Design Envelope
- National Planning Applications After 01/01/2015
- National Planning Applications After 15/02/2021
- Part 10 Applications



© Irish Rail (2021). This drawing is confidential and the copyright in it is owned by Irish Rail. This drawing must not be either loaned, copied or otherwise reproduced in whole or in part or used for any purpose without the prior permission of Irish Rail.  
Data Source: National Planning Applications published by the Department of Housing, Planning and Local Government, An Bord Pleanála, Dublin City Council, South Dublin County Council, Kildare County Council.  
The contents of this publication are the sole responsibility of Iarnród Éireann and do not necessarily reflect the opinion of the European Union.



1/500,000 @ A4

Rev	Date	Dm	Chk'd	App'd	Description
v05	24/03/2021	NAR	CM	LK	March Issue
v04	24/02/2021	NAR	CM	LK	February Issue
v03	27/01/2021	NAR	CM	LK	January Issue
v02	17/12/2020	IP	CM	LK	December Issue
v01	25/11/2020	IP	CM	LK	November Issue

Client <b>Iarnród Éireann</b> Irish Rail		Engineering Designer <b>ATKINS</b> Supported by: <b>rps</b>	
Date	25/03/2021	Scale	1:13,470 @ A4
Project Code	5199586	Issuer	TTARPS
Drawn	NAR	Checked	CM
Approved	LK	OMS Code	

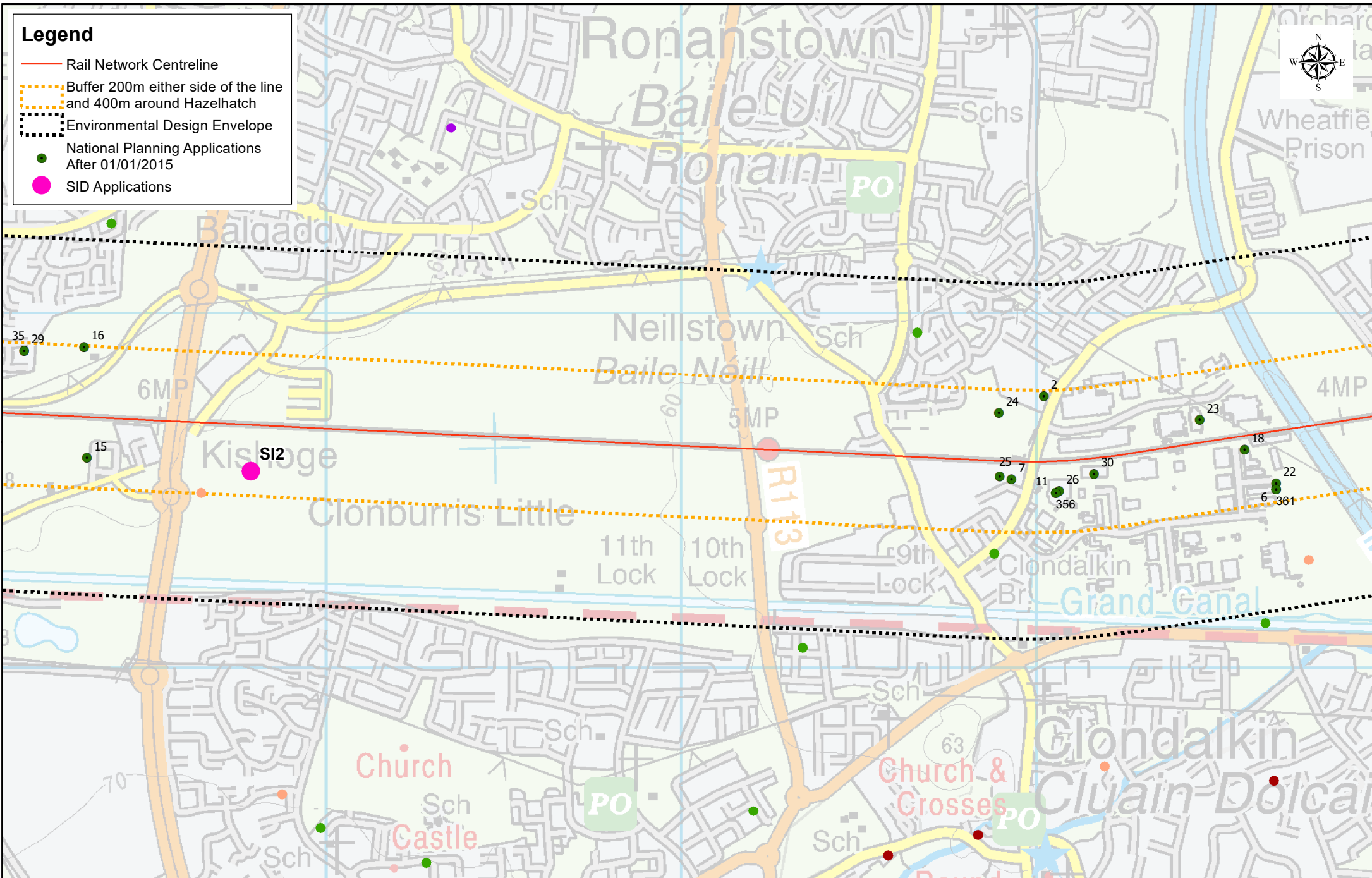
Project Title <b>DART + SOUTH WEST</b>	
Drawing Title <b>Planning Applications Monitoring Since 2015 - Map 05 of 10</b>	
Drawing File Name	DP-04-23-DWG-RO-TTA-9852
Version	v05
Status	S0

DO NOT SCALE USE FIGURED DIMENSIONS ONLY



## Legend

- Rail Network Centreline
- Buffer 200m either side of the line and 400m around Hazelhatch
- Environmental Design Envelope
- National Planning Applications After 01/01/2015
- SID Applications



© Irish Rail (2021). This drawing is confidential and the copyright in it is owned by Irish Rail. This drawing must not be either loaned, copied or otherwise reproduced in whole or in part or used for any purpose without the prior permission of Irish Rail.  
Data Source: National Planning Applications published by the Department of Housing, Planning and Local Government, An Bord Pleanála, Dublin City Council, South Dublin County Council, Kildare County Council.  
The contents of this publication are the sole responsibility of Iarnród Éireann and do not necessarily reflect the opinion of the European Union.



Rev	Date	Dn	Chk'd	App'd	Description
v05	24/03/2021	NAR	CM	LIK	March Issue
v04	24/02/2021	NAR	CM	LIK	February Issue
v03	27/01/2021	NAR	CM	LIK	January Issue
v02	17/12/2020	IP	CM	LIK	December Issue
v01	25/11/2020	IP	CM	LIK	November Issue

Client	Iarnród Éireann Irish Rail
Date	25/03/2021
Project Code	5199586
Scale	1:13,470 @ A4
Issue	TTARPS

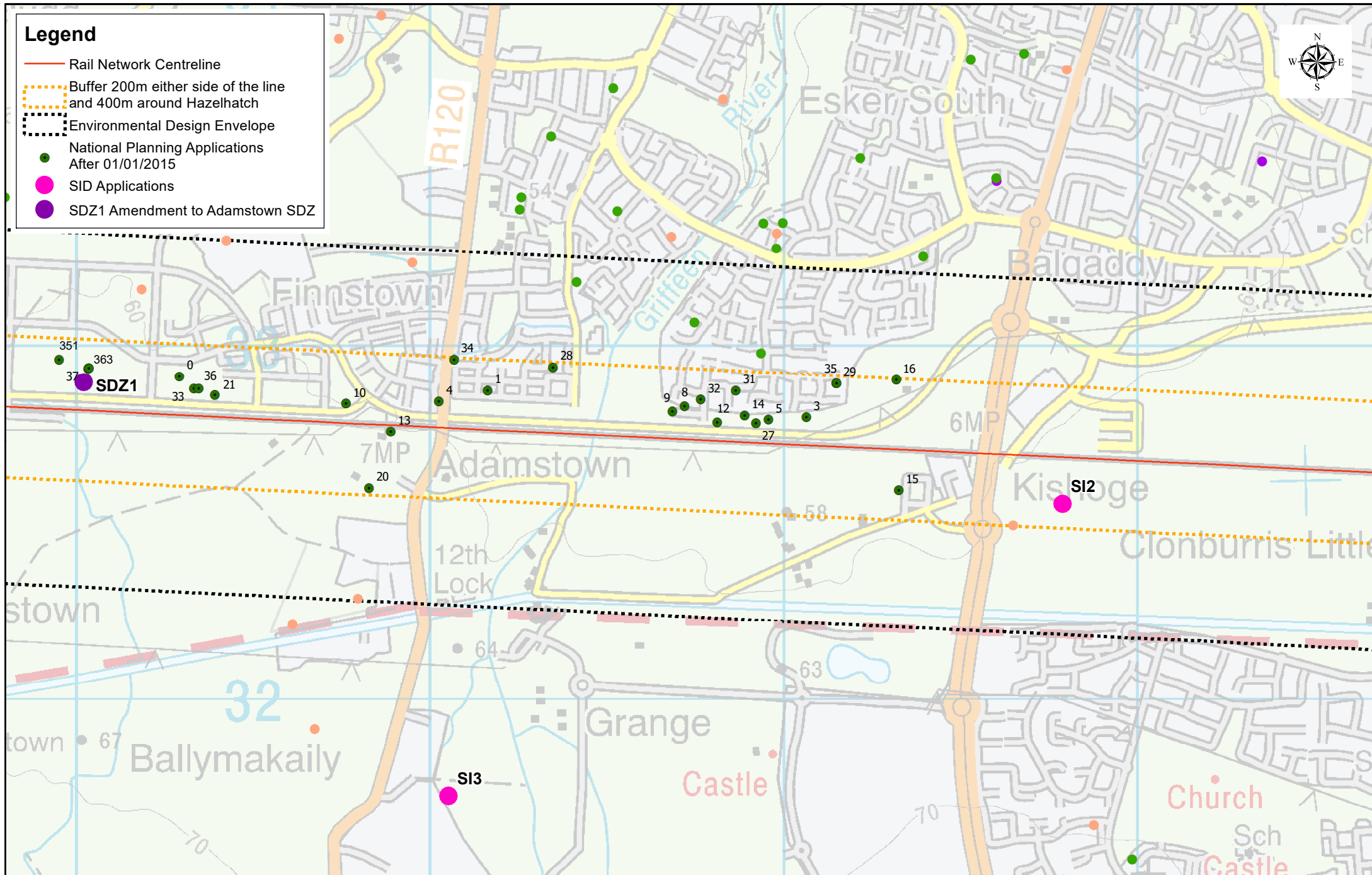
Engineering Designer	ATKINS
Checked	CM
Approved	LK
Drawn	NAR
Supported by	TPSA
Supported by	RPS
OMS Code	

Project Title	DART + SOUTH WEST
Drawing Title	Planning Applications Monitoring Since 2015 - Map 06 of 10
Drawing File Name	DP-04-23-DWG-RO-TTA-9852
Version	v05
Status	S0

DO NOT SCALE USE FIGURED DIMENSIONS ONLY

## Legend

- Rail Network Centreline
- Buffer 200m either side of the line and 400m around Hazelhatch
- Environmental Design Envelope
- National Planning Applications After 01/01/2015
- SID Applications
- SDZ1 Amendment to Adamstown SDZ



© Irish Rail (2021). This drawing is confidential and the copyright in it is owned by Irish Rail. This drawing must not be either loaned, copied or otherwise reproduced in whole or in part or used for any purpose without the prior permission of Irish Rail.  
Data Source: National Planning Applications published by the Department of Housing, Planning and Local Government, An Bord Pleanála, Dublin City Council, South Dublin County Council, Kildare County Council.  
The contents of this publication are the sole responsibility of Iarnród Éireann and do not necessarily reflect the opinion of the European Union.



Rev	Date	Dn	Chkd	App'd	Description
v05	24/03/2021	NAR	CM	LK	March Issue
v04	24/02/2021	NAR	CM	LK	February Issue
v03	27/01/2021	NAR	CM	LK	January Issue
v02	17/12/2020	IP	CM	LK	December Issue
v01	25/11/2020	IP	CM	LK	November Issue

Client		Iarnród Éireann Irish Rail	
Date	25/03/2021	Scale	1:13,470 @ A4
Project Code	5199586	Issuer	TTARPS

Engineering Designer		ATKINS TVPSA Supported by: RPS	
Drawn	NAR	Checked	CM
Approved	LK	OMS Code	

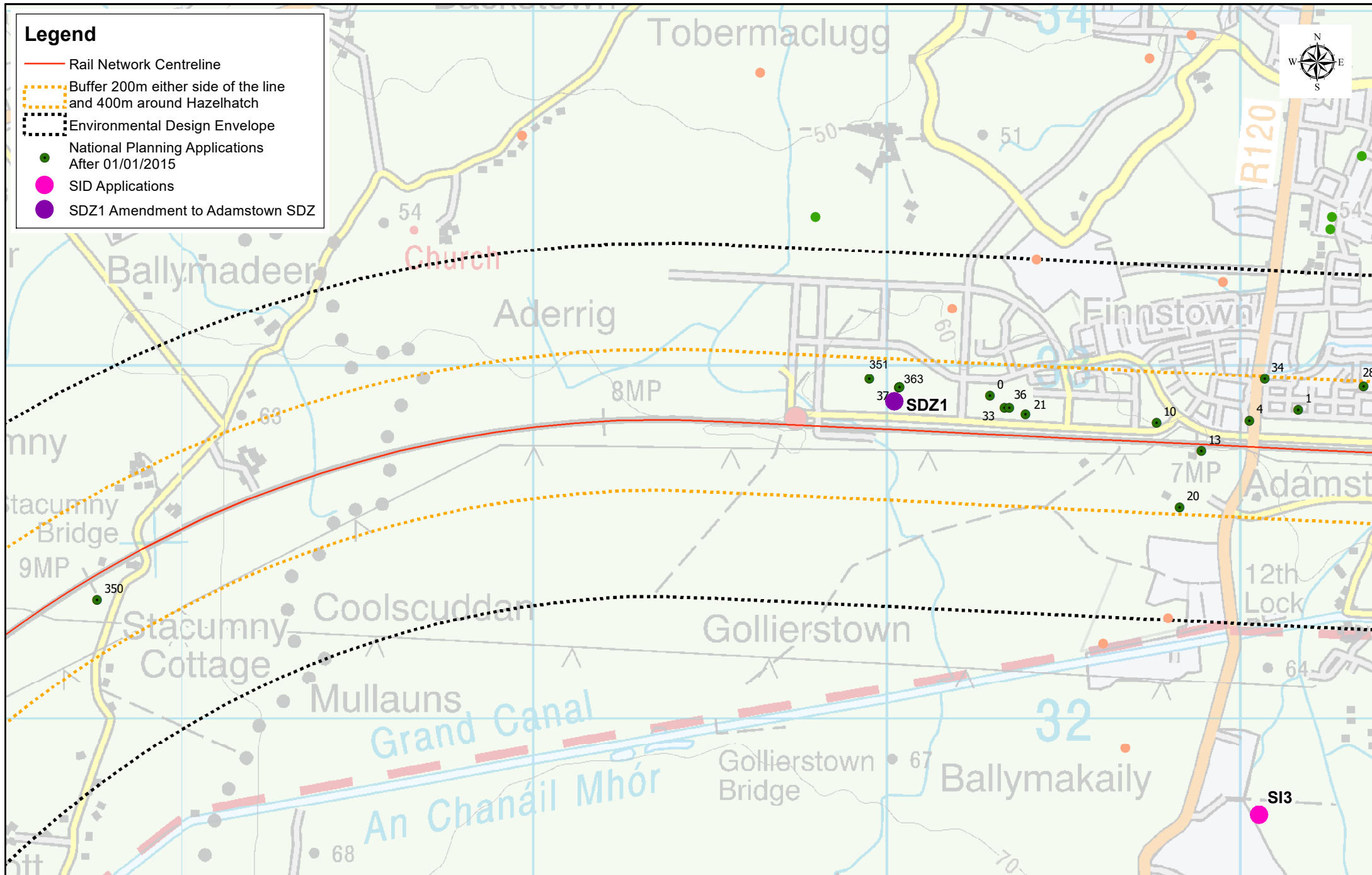
Project Title		DART + SOUTH WEST	
Drawing Title		Planning Applications Monitoring Since 2015 - Map 07 of 10	
Drawing File Name		DP-04-23-DWG-RO-TTA-9852	
Version	v05	Status	S0

DO NOT SCALE USE FIGURED DIMENSIONS ONLY



## Legend

- Rail Network Centreline
- - - Buffer 200m either side of the line and 400m around Hazelhatch
- - - Environmental Design Envelope
- National Planning Applications After 01/01/2015
- SID Applications
- SDZ1 Amendment to Adamstown SDZ



© Irish Rail (2021). This drawing is confidential and the copyright in it is owned by Irish Rail. This drawing must not be either loaned, copied or otherwise reproduced in whole or in part or used for any purpose without the prior permission of Irish Rail.  
Data Source: National Planning Applications published by the Department of Housing, Planning and Local Government, An Bord Pleanála, Dublin City Council, South Dublin County Council, Kildare County Council.  
The contents of this publication are the sole responsibility of Iarnród Éireann and do not necessarily reflect the opinion of the European Union.



Rev	Date	Dn	Chkd	App'd	Description
v05	24/03/2021	NAR	CM	LK	March Issue
v04	24/02/2021	NAR	CM	LK	February Issue
v03	27/01/2021	NAR	CM	LK	January Issue
v02	17/12/2020	IP	CM	LK	December Issue
v01	25/11/2020	IP	CM	LK	November Issue

Client  
**Iarnród Éireann**  
**Irish Rail**

Engineering Designer  
**ATKINS**  
TYPSA  
Supported by: **rps**

Project Title  
**DART + SOUTH WEST**

Drawing Title  
**Planning Applications Monitoring Since 2015 - Map 08 of 10**

Drawing File Name  
DP-04-23-DWG-RO-TTA-9852

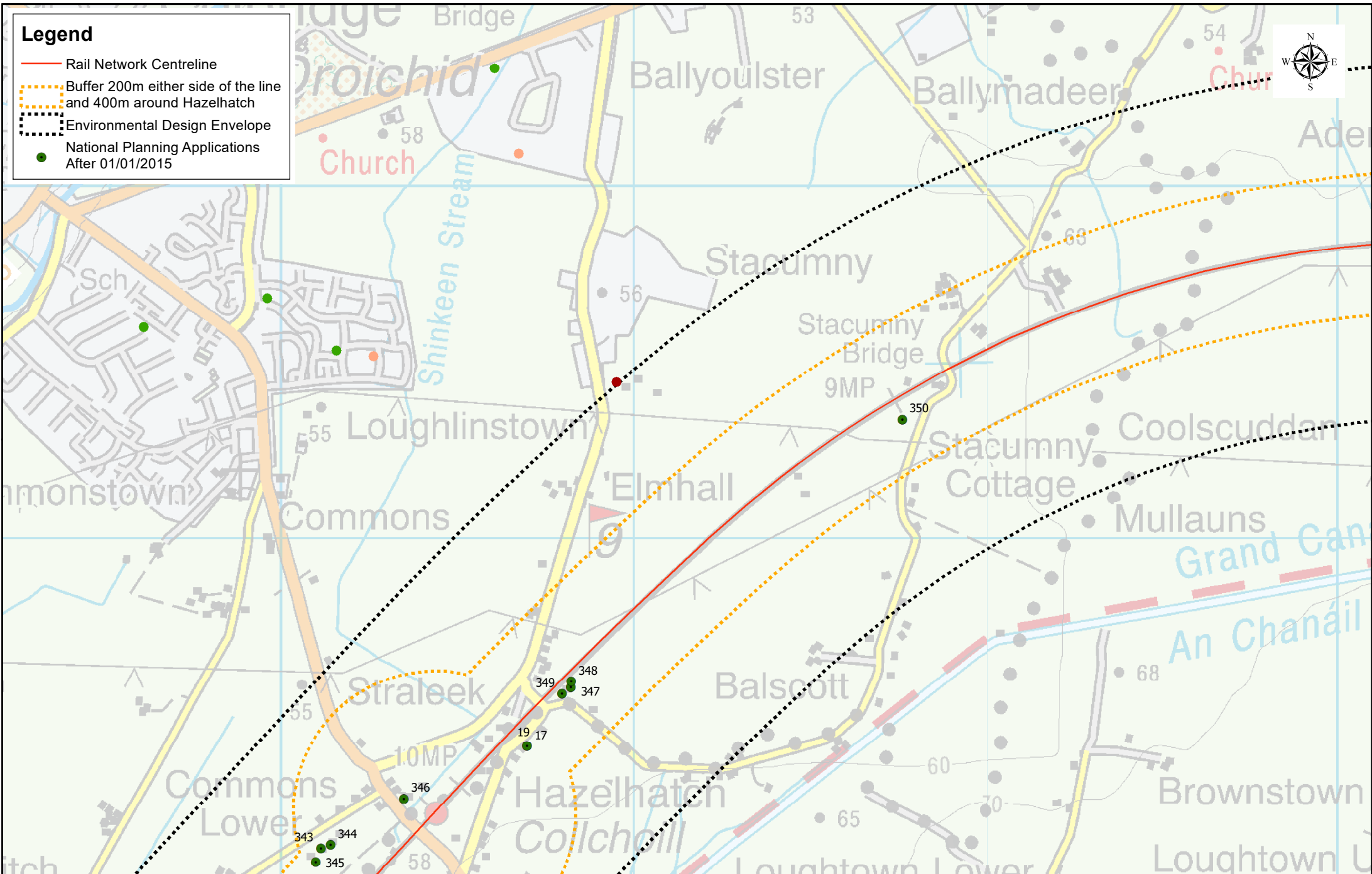
Version  
v05

Status  
S0

DO NOT SCALE USE FIGURED DIMENSIONS ONLY

## Legend

- Rail Network Centreline
- Buffer 200m either side of the line and 400m around Hazelhatch
- Environmental Design Envelope
- National Planning Applications After 01/01/2015



© Irish Rail (2021). This drawing is confidential and the copyright in it is owned by Irish Rail. This drawing must not be either loaned, copied or otherwise reproduced in whole or in part or used for any purpose without the prior permission of Irish Rail.  
Data Source: National Planning Applications published by the Department of Housing, Planning and Local Government, An Bord Pleanála, Dublin City Council, South Dublin County Council, Kildare County Council.  
The contents of this publication are the sole responsibility of Iarnród Éireann and do not necessarily reflect the opinion of the European Union.



Rev	Date	Dn	Chkd	App'd	Description
v05	24/03/2021	NAR	CM	LK	March Issue
v04	24/02/2021	NAR	CM	LK	February Issue
v03	27/01/2021	NAR	CM	LK	January Issue
v02	17/12/2020	IP	CM	LK	December Issue
v01	25/11/2020	IP	CM	LK	November Issue

Client		Engineering Designer	
Iarnród Éireann Irish Rail		ATKINS TYPSA Supported by: RPS	
Date	25/03/2021	Scale	1:13,470 @ A4
Project Code	5199586	Issuer	TTARPS
Drawn		Checked	Approved
NAR		CM	LK
QMS Code		Status	
		v05	

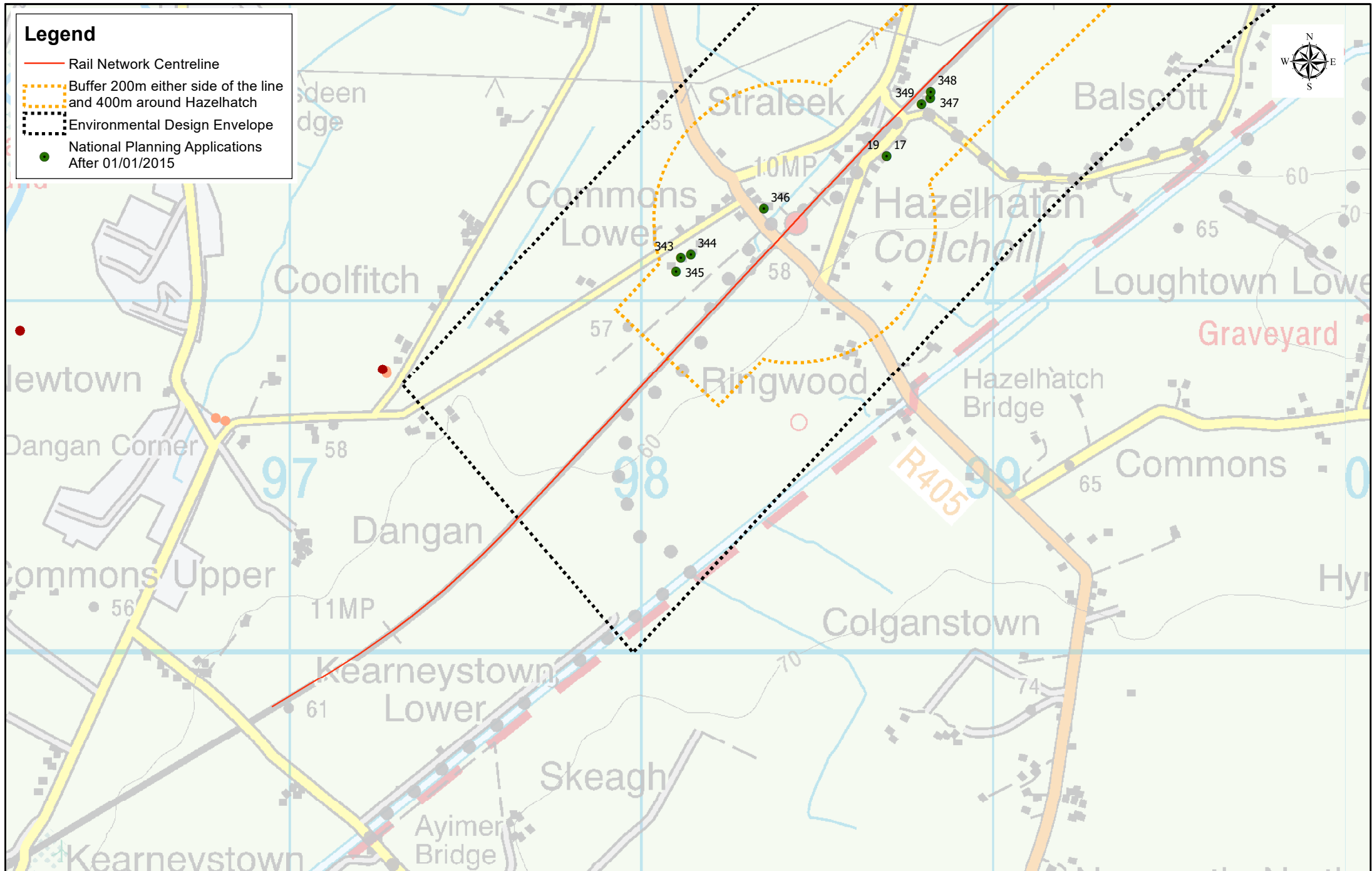
Project Title		DART + SOUTH WEST	
Drawing Title		Planning Applications Monitoring Since 2015 - Map 09 of 10	
Drawing File Name		DP-04-23-DWG-RO-TTA-9852	
Version		Status	
v05		S0	

DO NOT SCALE USE FIGURED DIMENSIONS ONLY



## Legend

- Rail Network Centreline
- Buffer 200m either side of the line and 400m around Hazelhatch
- Environmental Design Envelope
- National Planning Applications After 01/01/2015



© Irish Rail (2021). This drawing is confidential and the copyright in it is owned by Irish Rail. This drawing must not be either loaned, copied or otherwise reproduced in whole or in part or used for any purpose without the prior permission of Irish Rail.  
Data Source: National Planning Applications published by the Department of Housing, Planning and Local Government, An Bord Pleanála, Dublin City Council, South Dublin County Council, Kildare County Council.  
The contents of this publication are the sole responsibility of Iarnród Éireann and do not necessarily reflect the opinion of the European Union.



1/500,000 @ A4



Rev	Date	Dn	Chkd	App'd	Description
v05	24/03/2021	NAR	CM	LK	March Issue
v04	24/02/2021	NAR	CM	LK	February Issue
v03	27/01/2021	NAR	CM	LK	January Issue
v02	17/12/2020	IP	CM	LK	December Issue
v01	25/11/2020	IP	CM	LK	November Issue

Client	Iarnród Éireann Irish Rail
Date	25/03/2021
Scale	1:13,470 @ A4
Project Code	5199586
Issuer	TTARPS

Engineering Designer	ATKINS
Supported by	TYPSA rps
Drawn	NAR
Checked	CM
Approved	LK
QMS Code	

Project Title	DART + SOUTH WEST
Drawing Title	Planning Applications Monitoring Since 2015 - Map 10 of 10
Drawing File Name	DP-04-23-DWG-RO-TTA-9852
Version	v05
Status	S0

DO NOT SCALE USE FIGURED DIMENSIONS ONLY