

Legend

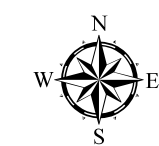
Rail Network Line

Zone

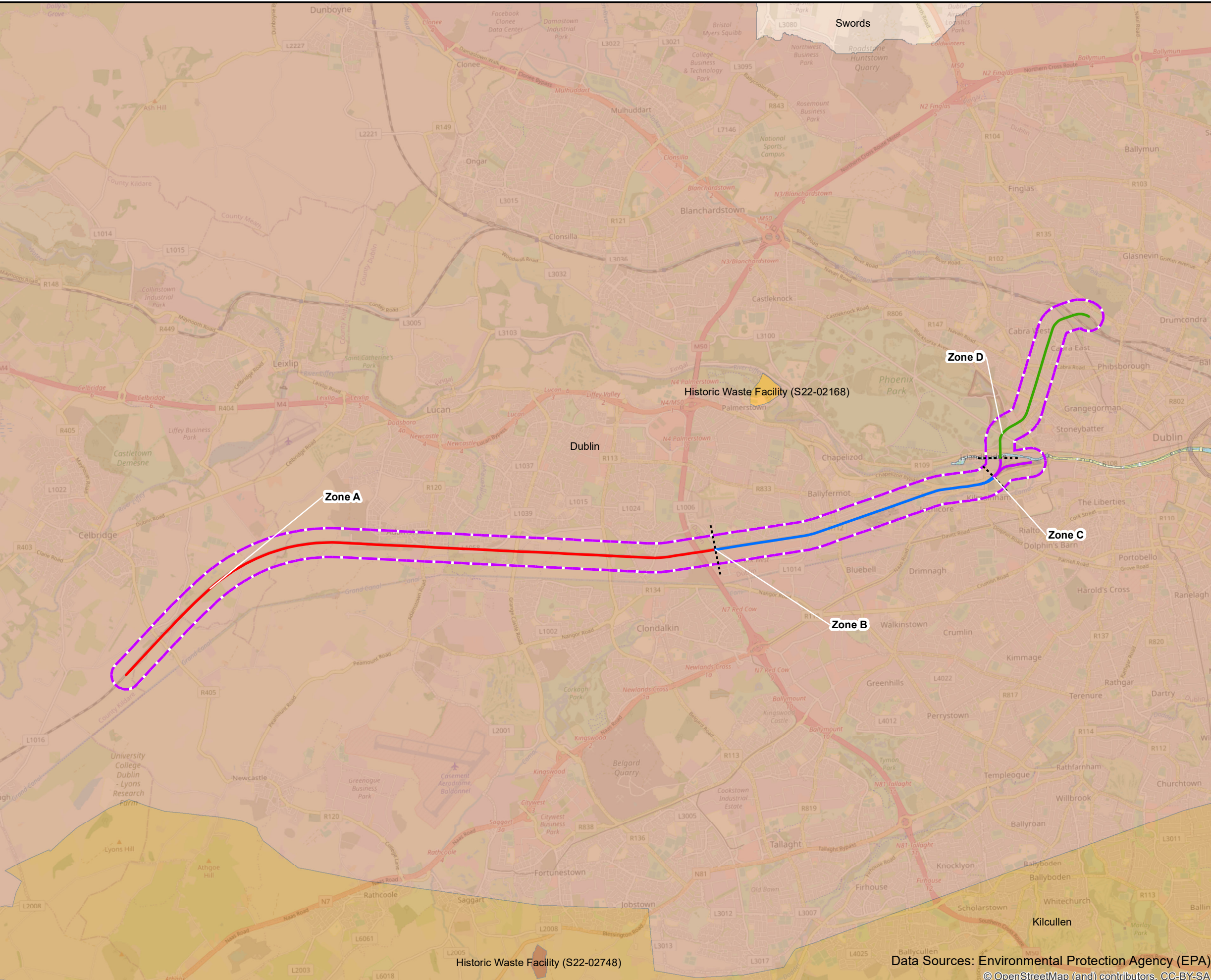
- Zone A: from Hazelhatch & Celbridge Station to Park West & Cherry Orchard Station
- Zone B: Park West & Cherry Orchard Station to Heuston
- Zone C: Heuston Station and Yard
- Zone D: From Liffey Bridge to Glasnevin Junction
- Zone Boundaries
- 250m Buffer Zone

WFD Groundwater Bodies (Cycle 3)

- Dublin
- Historic Waste Facility (S22-02168)
- Historic Waste Facility (S22-02748)
- Kilcullen
- Swords

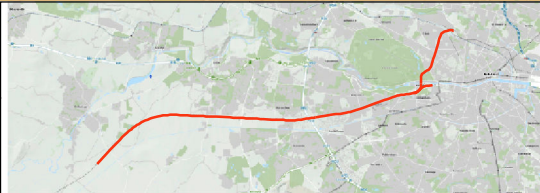


Data Sources: Environmental Protection Agency (EPA)
© OpenStreetMap (and) contributors, CC-BY-SA



© Irish Rail (2022). This drawing is confidential and the copyright in it is owned by Irish Rail. This drawing must not be either loaned, copied or otherwise reproduced in whole or in part or used for any purpose without the prior permission of Irish Rail.

© Ordnance Survey Ireland and government of Ireland. All O.S. Data used for plans are printed under: "Copyright Ordnance Survey Ireland" Survey No. 0038722 (OSi Aerial Data or OSi Lidar Data) & Survey No. 2022/OSi_NMA_180 (OSi Vector Data). All elevations are in metres and relate to OSi Geoid Model (OSGM02) Malin Head as defined by existing Project Control. All Co-ordinates are in Irish Transverse Mercator Grid (ITM) as defined by OSi active GPS station Tallaght College (TLLG).



Rev	Date	Drn	Chk'd	App'd	Description
v02	22/10/2022	IP	EH	CR	Groundwater Bodies
v01	31/03/2022	IP	EH	CR	Groundwater Bodies

Client Iarnród Éireann Irish Rail		Engineering Designer ATKINS Member of the SNC-Lavalin Group		
Date 08/11/2022		Supported by: RPS		
Scale 1:65,000 @ A3	Drawn IP	Checked EH	Approved CR	
Project Code 5195886	Issuer TTA	QMS Code		

Project Title DART + SOUTH WEST		Version v02	Status S3
Drawing Title Figure 11.1: Groundwater Bodies			
Drawing File Name DP-04-23-DWG-EV-TTA-23745		Version v02	Status S3

DO NOT SCALE USE FIGURED DIMENSIONS ONLY

Legend

Rail Network Line

Zone

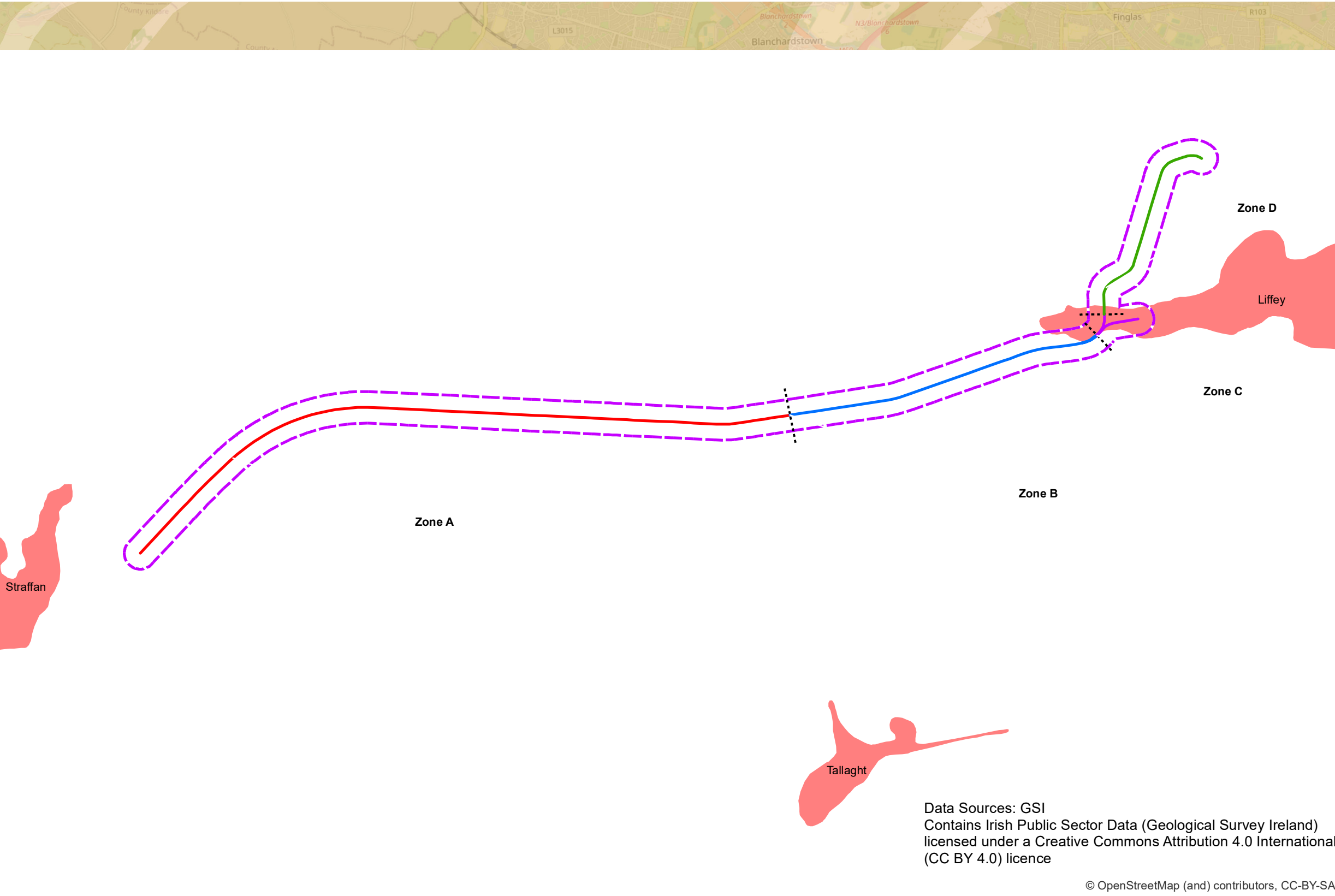
- Zone A: from Hazelhatch & Celbridge Station to Park West & Cherry Orchard Station
- Zone B: Park West & Cherry Orchard Station to Heuston
- Zone C: Heuston Station and Yard
- Zone D: From Liffey Bridge to Glasnevin Junction
- Zone Boundaries
- 250m Buffer Zone

Gravel Aquifer

- Locally important gravel aquifer

Bedrock Aquifer

- LI - Locally Important Aquifer - Bedrock which is Moderately Productive only in Local Zones
- PI - Poor Aquifer - Bedrock which is Generally Unproductive except for Local Zones
- Pu - Poor Aquifer - Bedrock which is Generally Unproductive



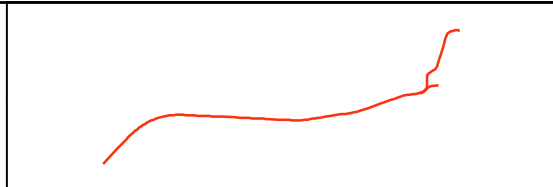
Data Sources: GSI
 Contains Irish Public Sector Data (Geological Survey Ireland)
 licensed under a Creative Commons Attribution 4.0 International
 (CC BY 4.0) licence

© OpenStreetMap (and) contributors, CC-BY-SA



© Irish Rail (2022). This drawing is confidential and the copyright in it is owned by Irish Rail. This drawing must not be either loaned, copied or otherwise reproduced in whole or in part or used for any purpose without the prior permission of Irish Rail.

© Ordnance Survey Ireland and government of Ireland. All O.S. Data used for plans are printed under: "Copyright Ordnance Survey Ireland" Survey No. 0039722. (OSi Aerial Data or OSi Lidar Data) & Survey No. 2022/OSi_NMA_180 (OSi Vector Data). All elevations are in metres and relate to OSi Geoid Model (OSGM02) Malin Head as defined by existing Project Control. All Co-ordinates are in Irish Transverse Mercator Grid (ITM) as defined by OSi active GPS station Tallaght College (TLLG).



Rev	Date	Drn	Chk'd	App'd	Description
v02	26/10/2022	IP	EH	CR	Bedrock and Gravel Aquifers
v01	29/03/2022	IP	EH	CR	Bedrock and Gravel Aquifers

Client		Engineering Designer		
Supported by:				
Date	Scale	Drawn	Checked	Approved
08/11/2022	1:65,000 @ A3	IP	EH	CR
Project Code	Issuer	QMS Code		
5195886	TTA			

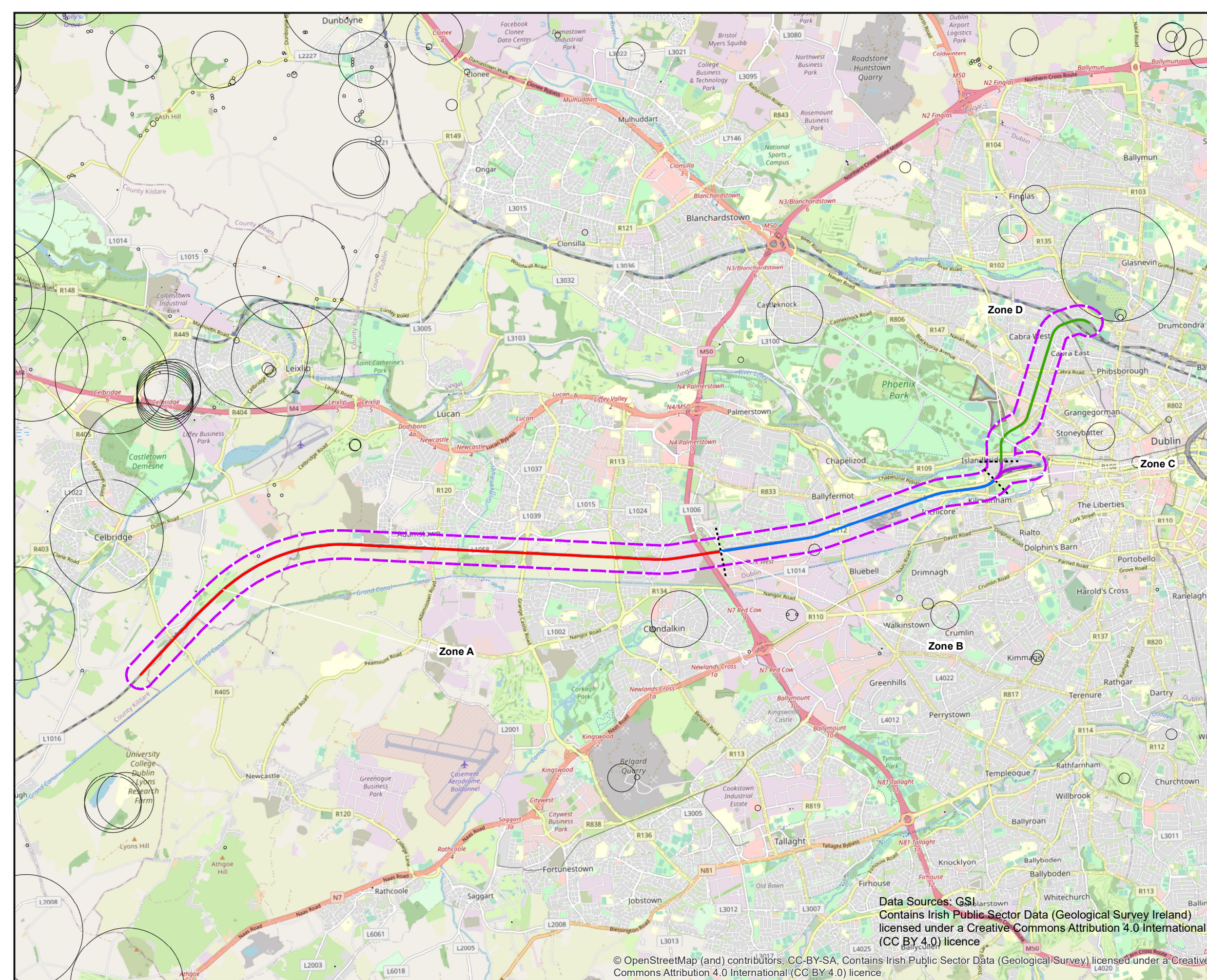
Project Title		DART + SOUTH WEST	
Drawing Title		Figure 11.4: Aquifer Designation	
Drawing File Name	Version	Status	
DP-04-23-DWG-EV-TTA-23744	v02	S3	

DO NOT SCALE USE FIGURED DIMENSIONS ONLY

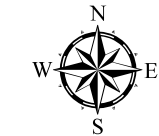
Legend

Rail Network Line

- Zone**
- Zone A: from Hazelhatch & Celbridge Station to Park West & Cherry Orchard Station
 - Zone B: Park Wet & Cherry Orchard Station to Heuston
 - Zone C: Heuston Station and Yard
 - Zone D: From Liffey Bridge to Glasnevin Junction
 - Zone Boundaries
 - 250m Buffer Zone
 - Groundwater Wells and Springs



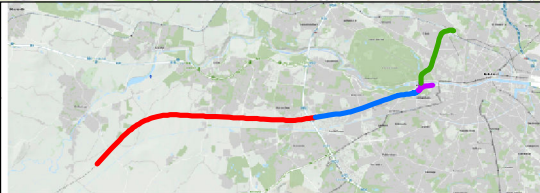
Data Sources: GSI
 Contains Irish Public Sector Data (Geological Survey Ireland)
 licensed under a Creative Commons Attribution 4.0 International
 (CC BY 4.0) licence



© OpenStreetMap (and) contributors, CC-BY-SA, Contains Irish Public Sector Data (Geological Survey) licensed under a Creative Commons Attribution 4.0 International (CC BY 4.0) licence

© Irish Rail (2022). This drawing is confidential and the copyright in it is owned by Irish Rail. This drawing must not be either loaned, copied or otherwise reproduced in whole or in part or used for any purpose without the prior permission of Irish Rail.

© Ordnance Survey Ireland and government of Ireland. All O.S. Data used for plans are printed under: "Copyright Ordnance Survey Ireland" Survey No. 0038722. (OSi Aerial Data or OSi Lidar Data) & Survey No. 2022/OSi_NMA_180 (OSi Vector Data). All elevations are in metres and relate to OSi Geoid Model (OSGM02) Malin Head as defined by existing Project Control. All Co-ordinates are in Irish Transverse Mercator Grid (ITM) as defined by OSi active GPS station Tallaght College (TLLG).



Rev	Date	Drn	Chk'd	App'd	Description
v02	26/10/2022	IP	EH	CR	Groundwater Wells and Springs
v01	31/03/2022	IP	EH	CR	Groundwater Wells and Springs

Client Iarnród Éireann Irish Rail		Engineering Designer ATKINS Member of the SNC-Lavalin Group Supported by: RPS	
Date 08/11/2022	Scale 1:65,000 @ A3	Drawn IP	Checked EH
Project Code 5195886	Issuer TTA	Approved CR	

Project Title DART + SOUTH WEST	
Drawing Title Figure 11.5: Groundwater Wells and Springs	
Drawing File Name DP-04-23-DWG-EV-TTA-23748	Version v02
Status S3	

DO NOT SCALE USE FIGURED DIMENSIONS ONLY